

- Proposed Management Corridor
- Channel
- Historic Migration Zone (HMZ)
- Erosion Hazard Area (EHA)
- Restricted Migration Area (RMA)
- Moderate Avulsion Risk
- High Avulsion Risk

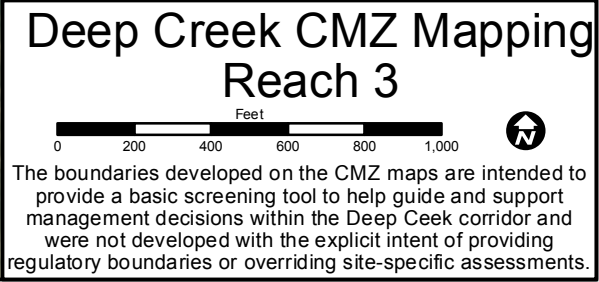


### Deep Creek CMZ Mapping Reaches 1 and 2

0 200 400 600 800 1,000 Feet

The boundaries developed on the CMZ maps are intended to provide a basic screening tool to help guide and support management decisions within the Deep Creek corridor and were not developed with the explicit intent of providing regulatory boundaries or overriding site-specific assessments.







- Proposed Management Corridor
- Channel
- Historic Migration Zone (HMZ)
- Erosion Hazard Area (EHA)
- Restricted Migration Area (RMA)
- Moderate Avulsion Risk
- High Avulsion Risk

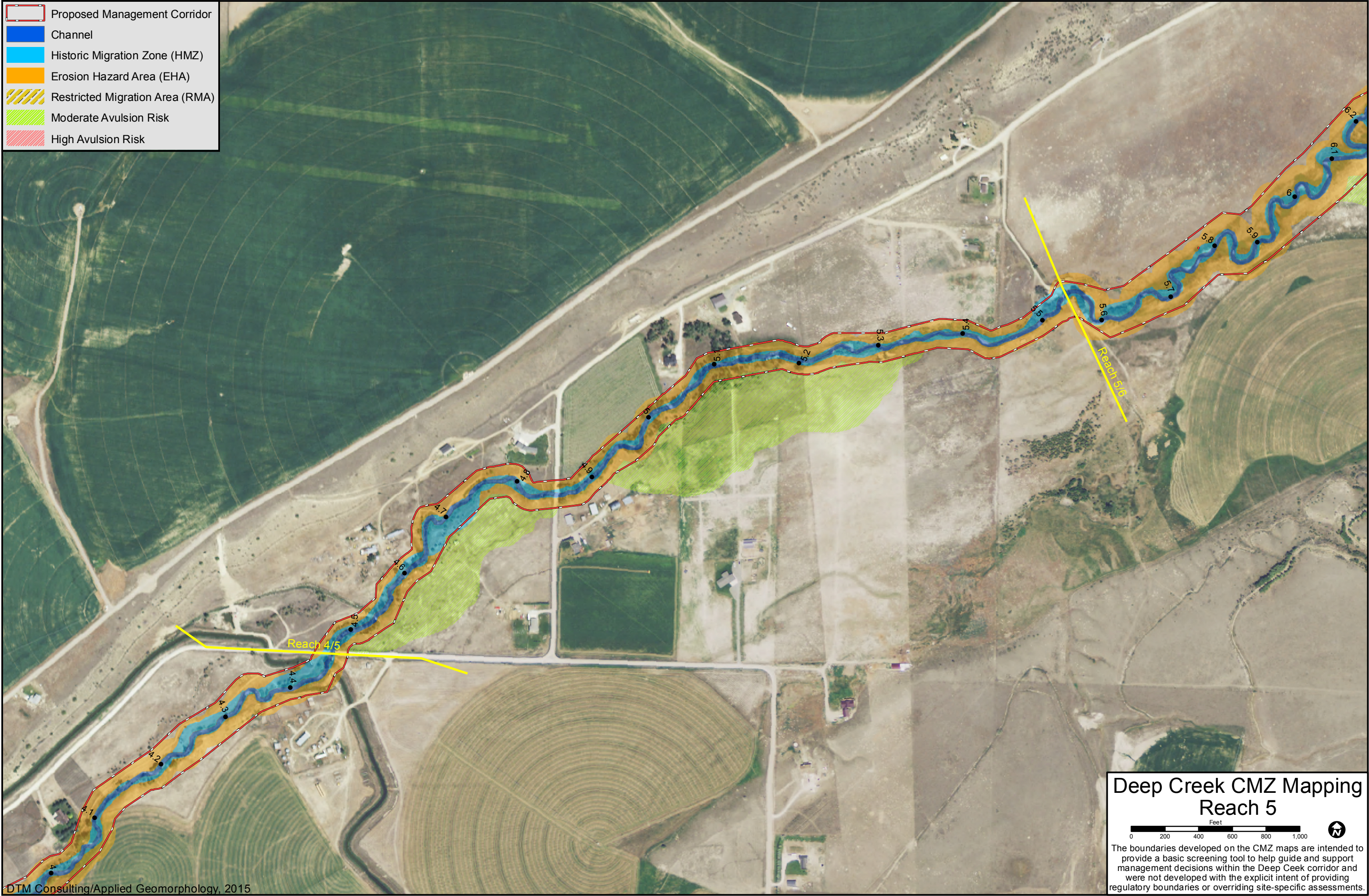


### Deep Creek CMZ Mapping Reach 4

0 200 400 600 800 1,000 Feet

The boundaries developed on the CMZ maps are intended to provide a basic screening tool to help guide and support management decisions within the Deep Creek corridor and were not developed with the explicit intent of providing regulatory boundaries or overriding site-specific assessments.

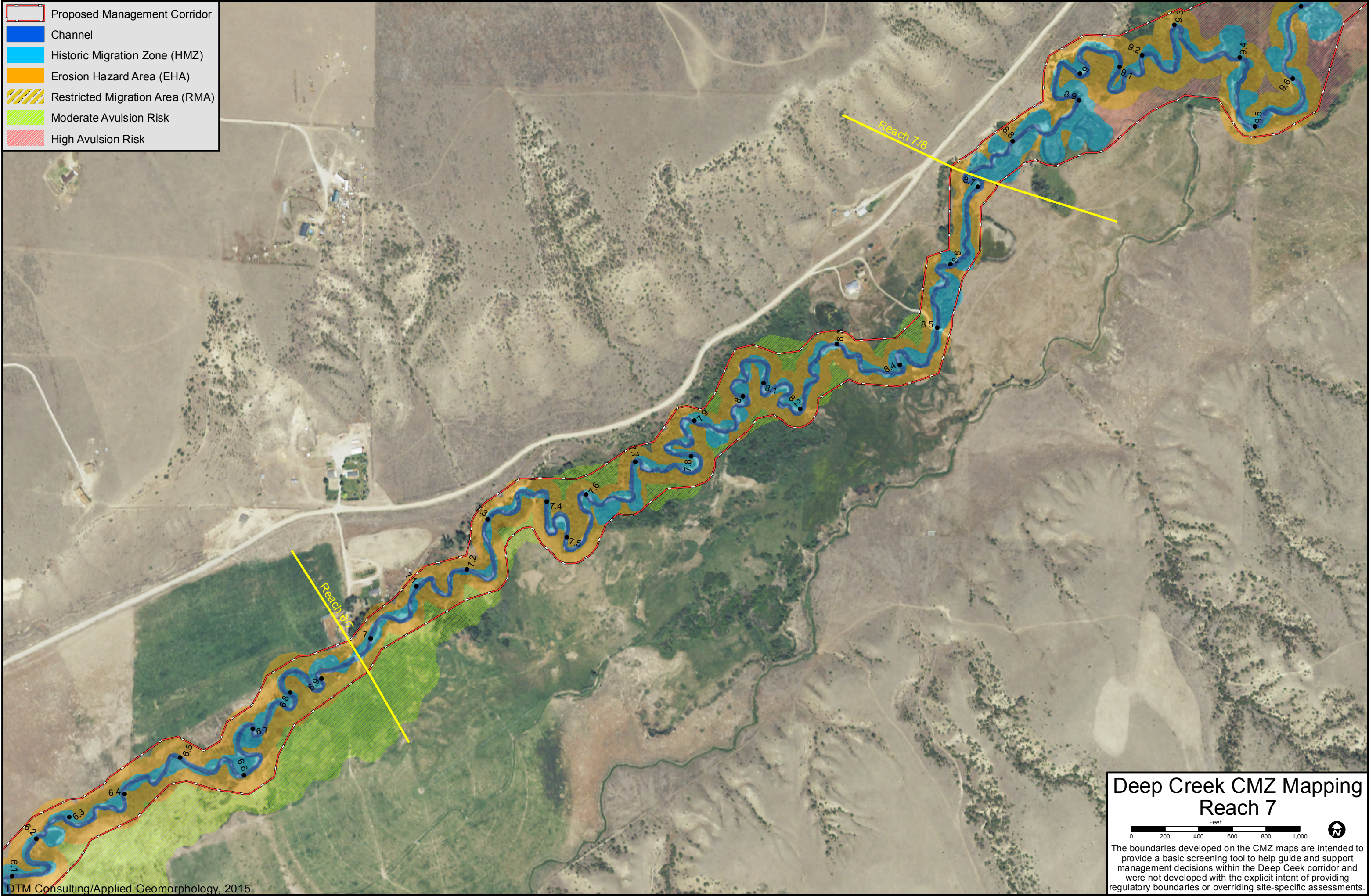




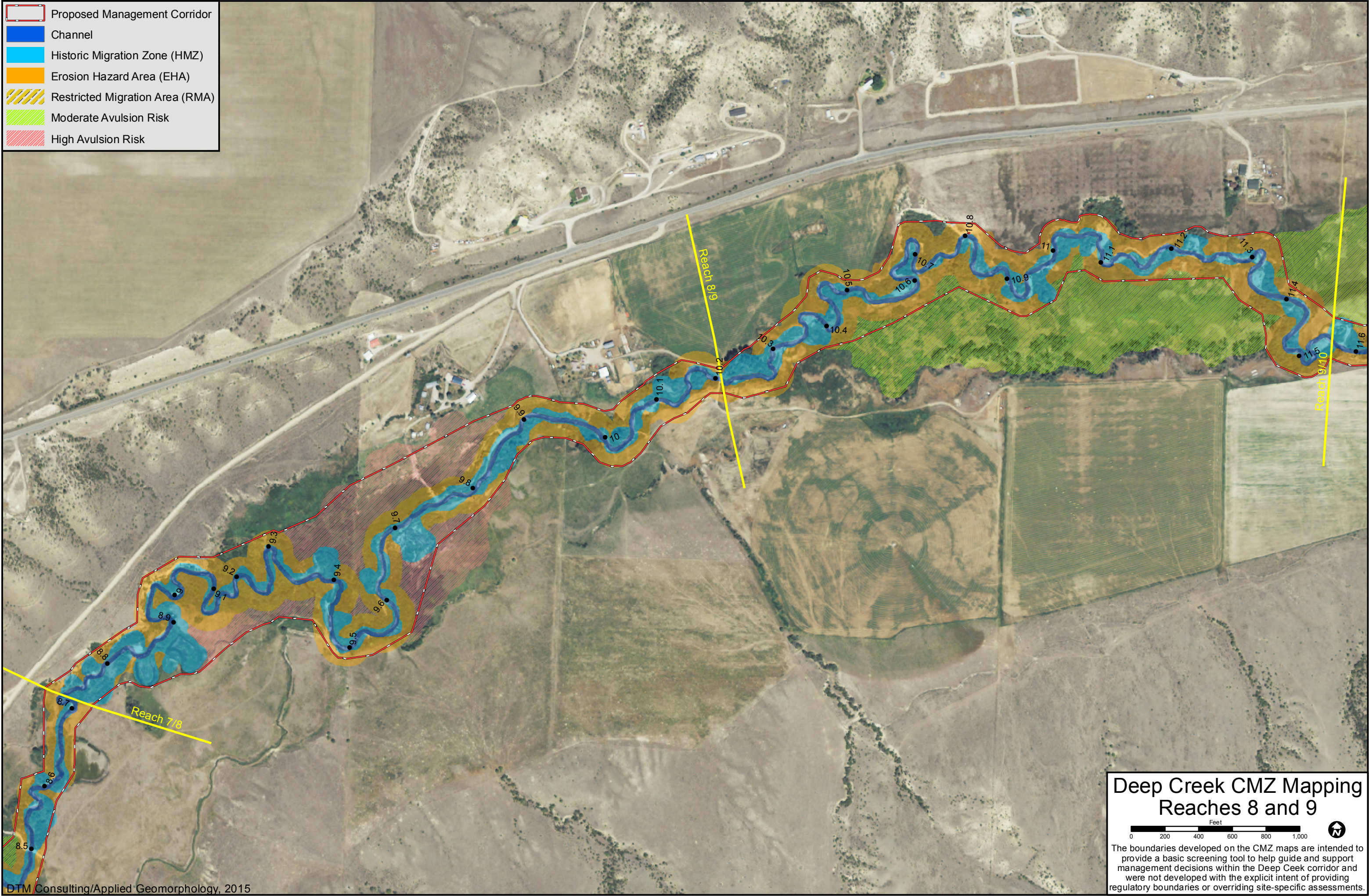
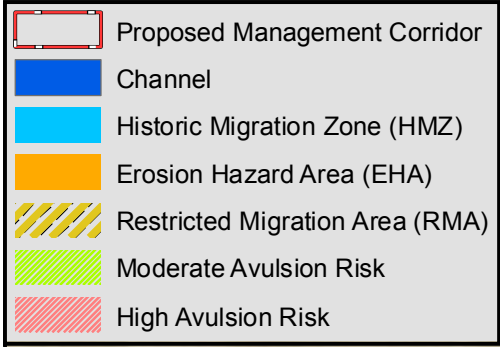










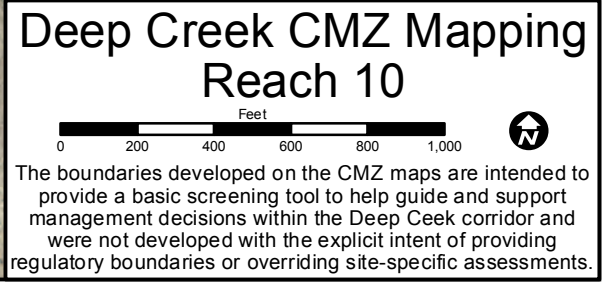
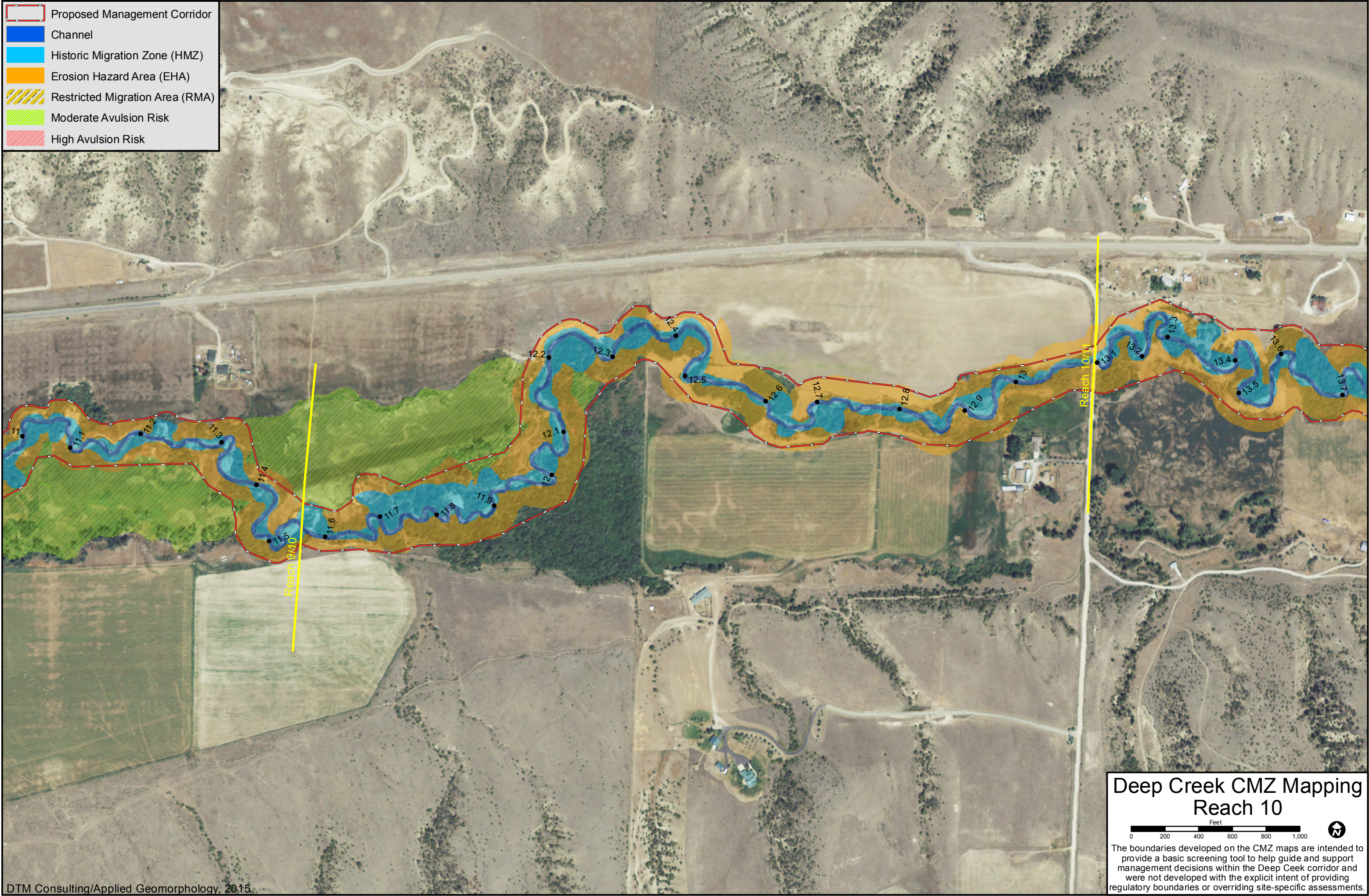


### Deep Creek CMZ Mapping Reaches 8 and 9

0 200 400 600 800 1,000 Feet

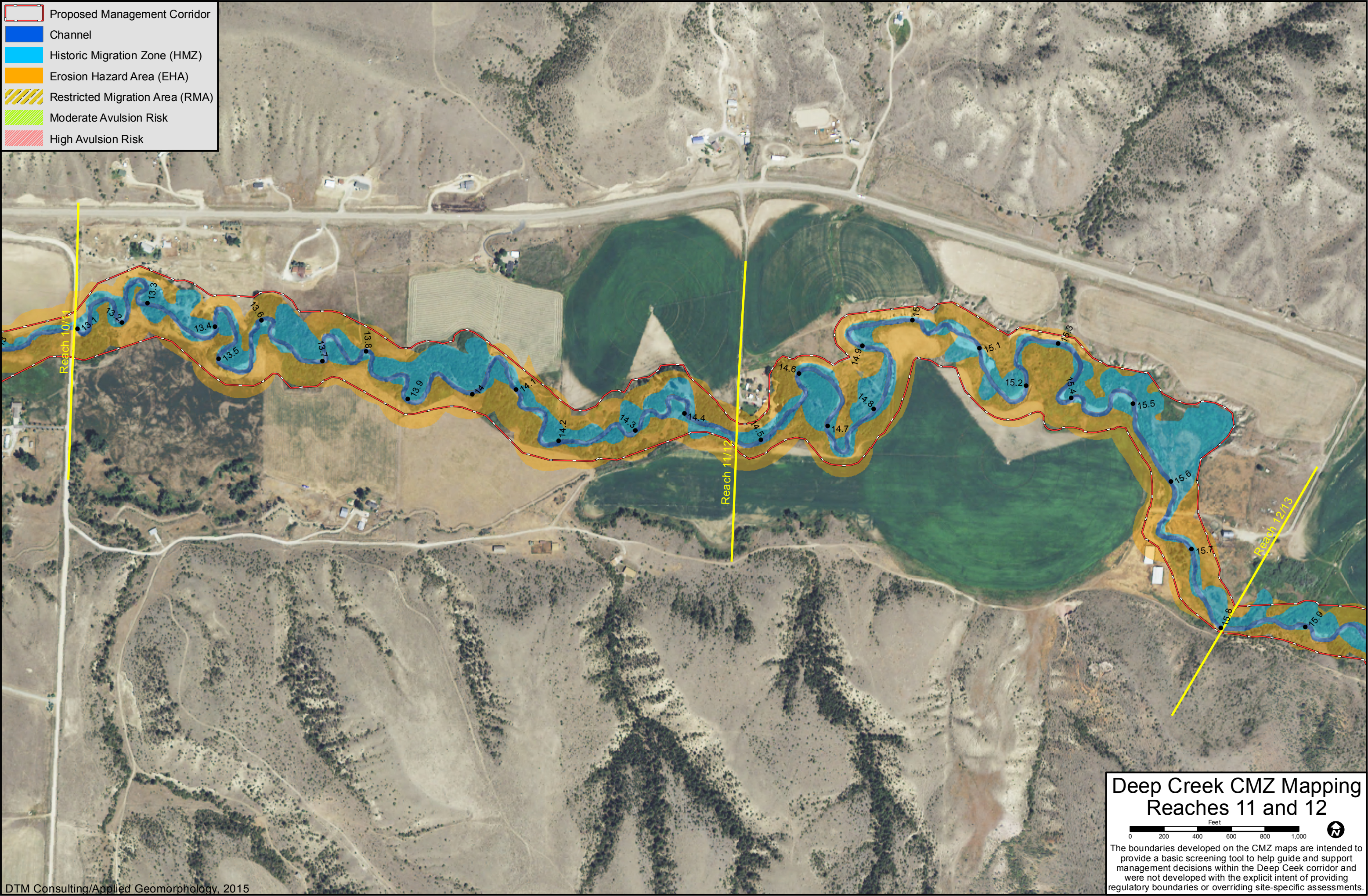
The boundaries developed on the CMZ maps are intended to provide a basic screening tool to help guide and support management decisions within the Deep Creek corridor and were not developed with the explicit intent of providing regulatory boundaries or overriding site-specific assessments.



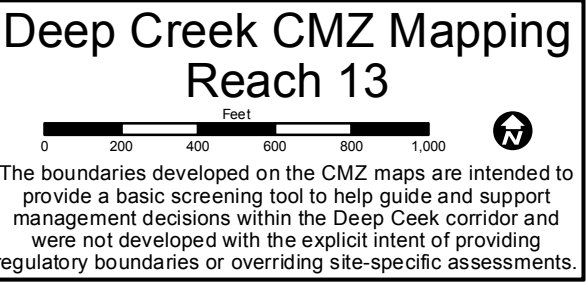
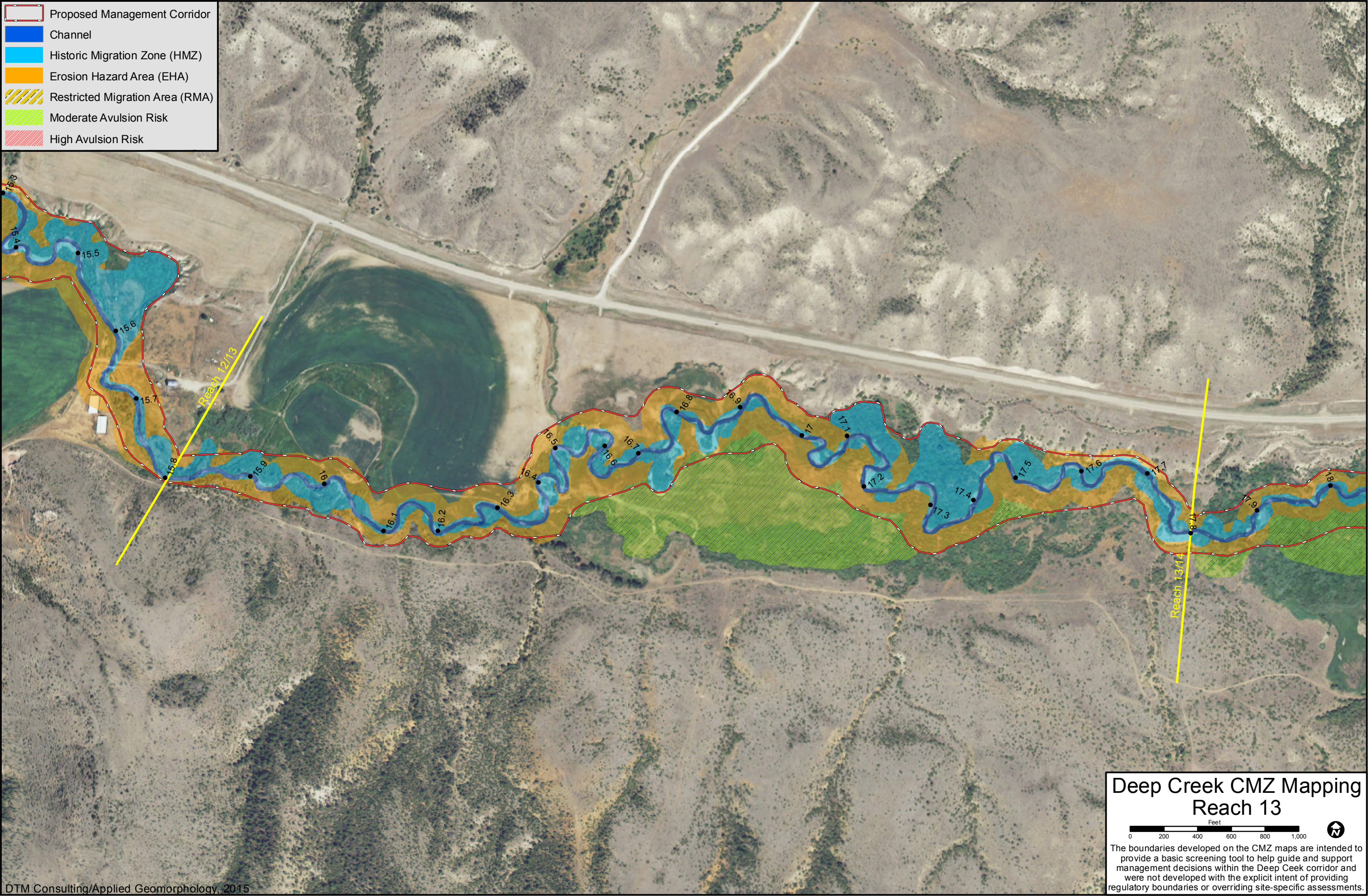




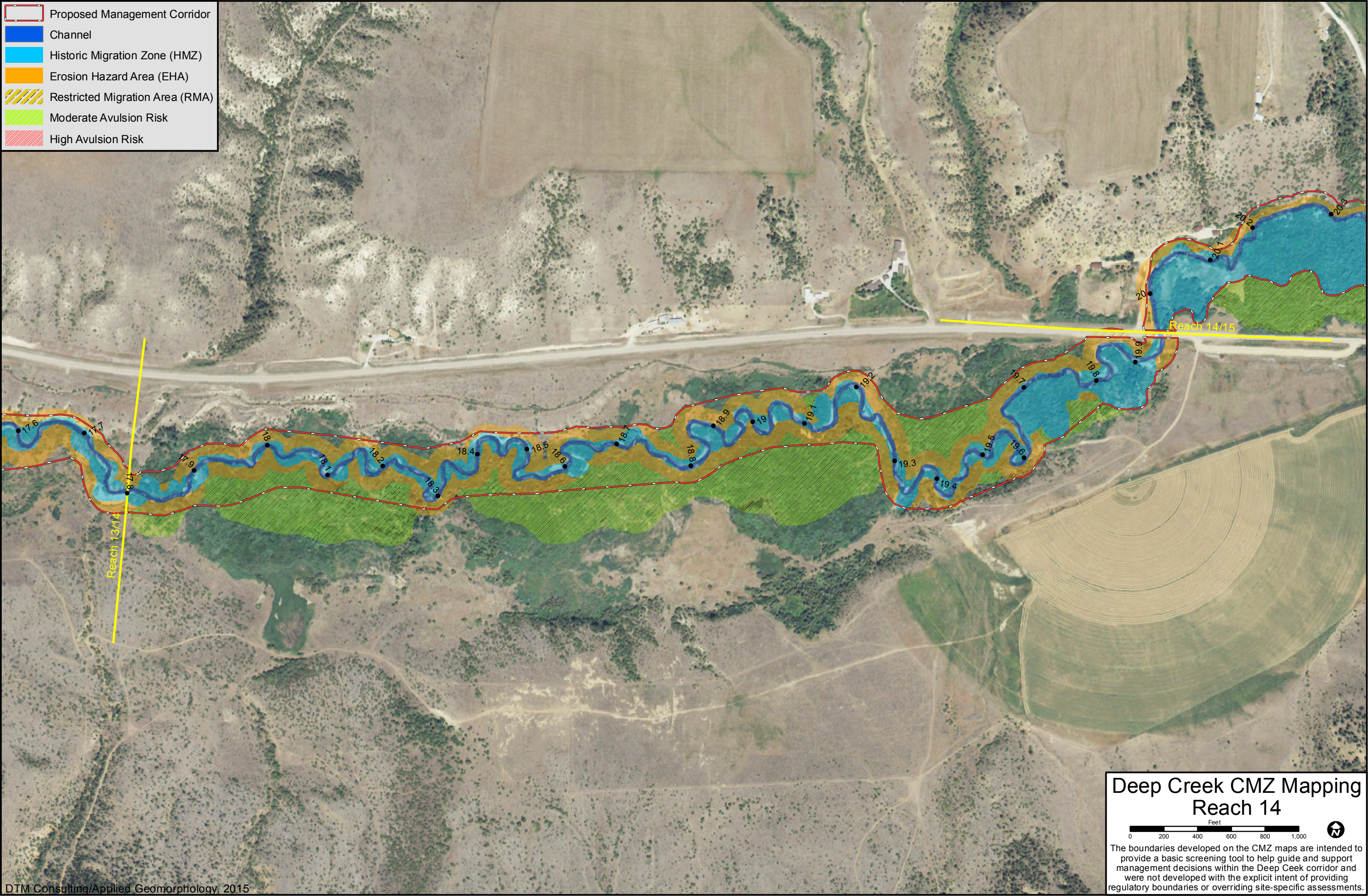
- Proposed Management Corridor
- Channel
- Historic Migration Zone (HMZ)
- Erosion Hazard Area (EHA)
- Restricted Migration Area (RMA)
- Moderate Avulsion Risk
- High Avulsion Risk



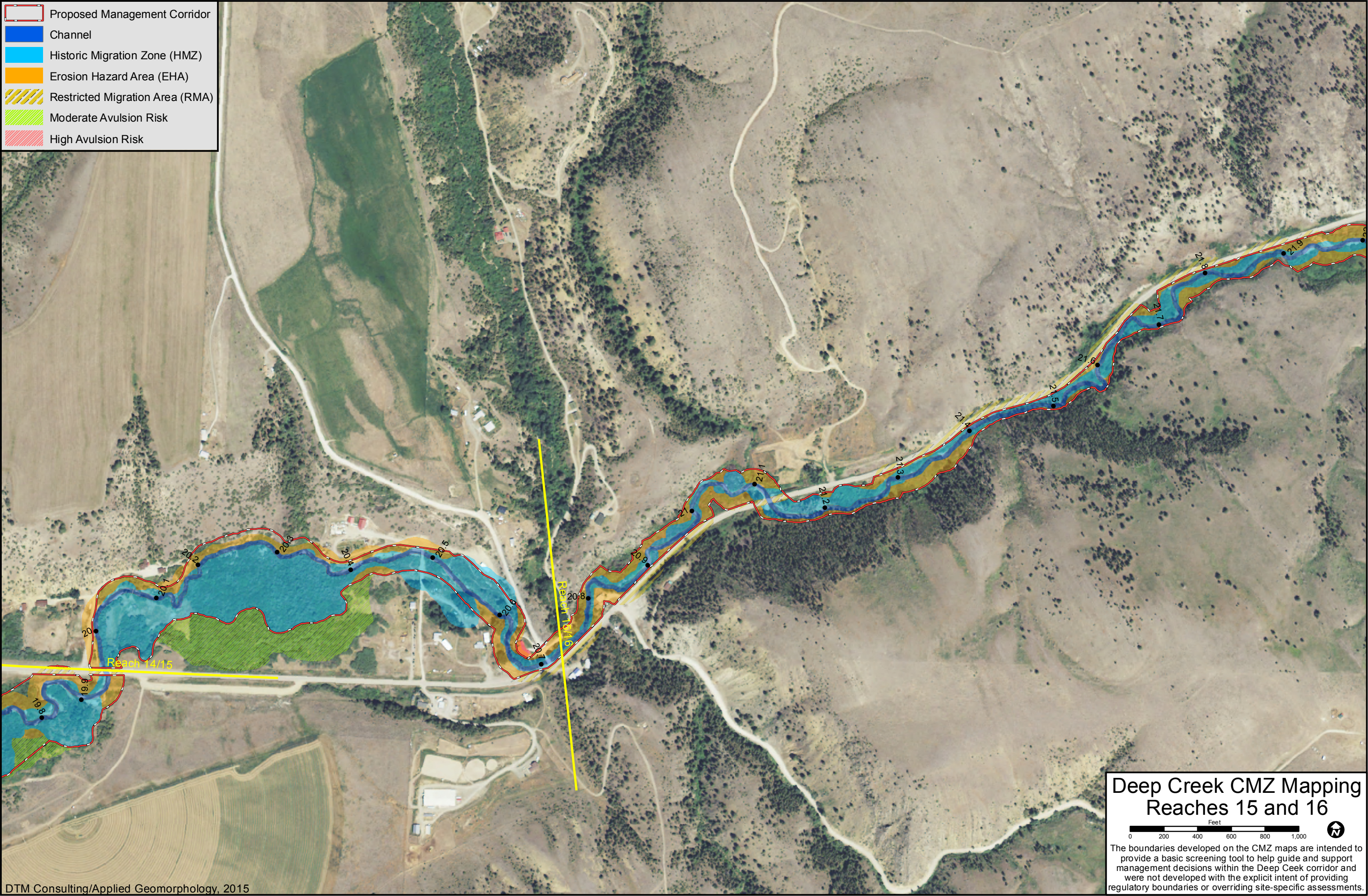












**Deep Creek CMZ Mapping**  
**Reaches 15 and 16**

0 200 400 600 800 1,000 Feet

The boundaries developed on the CMZ maps are intended to provide a basic screening tool to help guide and support management decisions within the Deep Creek corridor and were not developed with the explicit intent of providing regulatory boundaries or overriding site-specific assessments.



