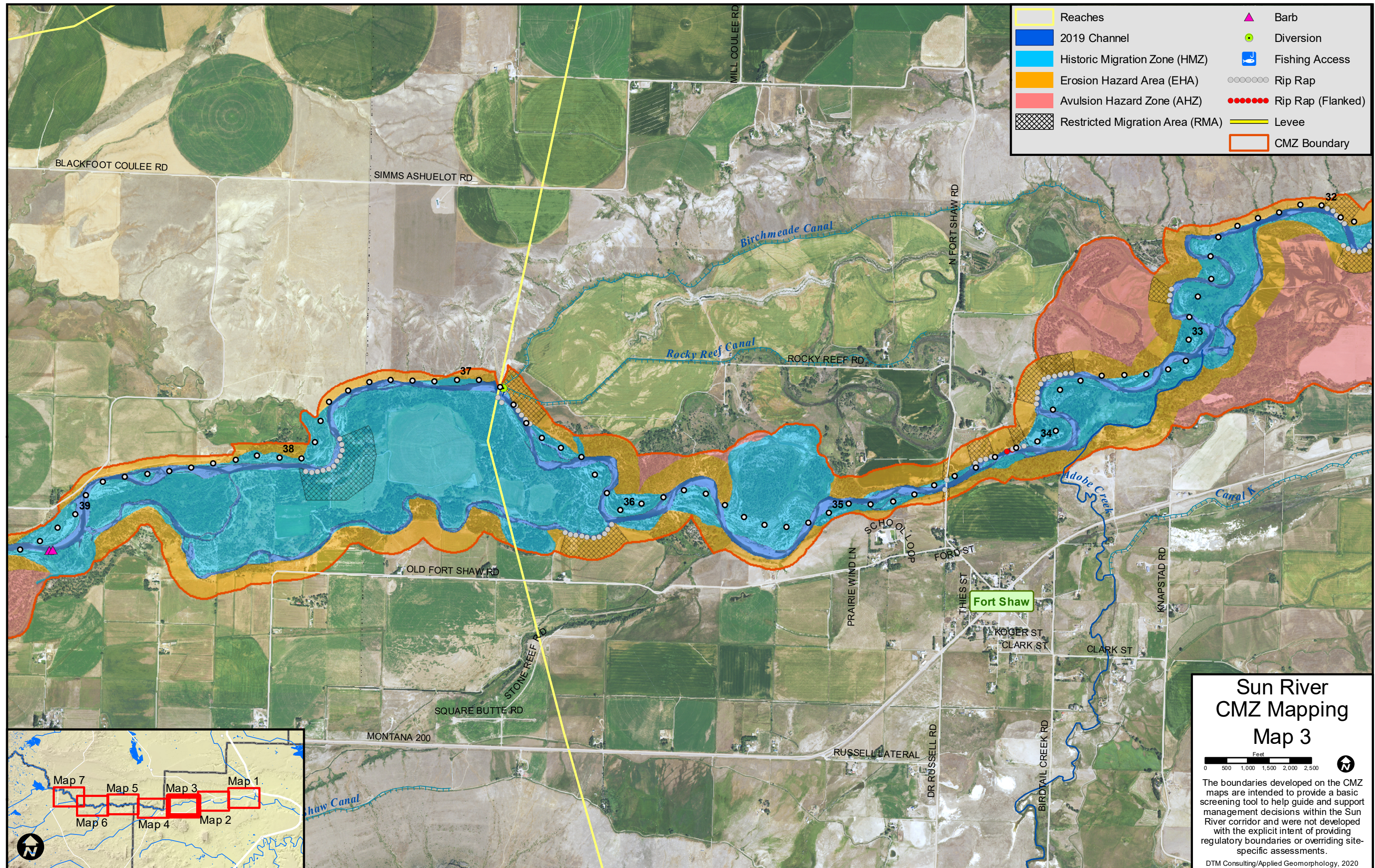


**Sun River  
CMZ Mapping  
Map 2**

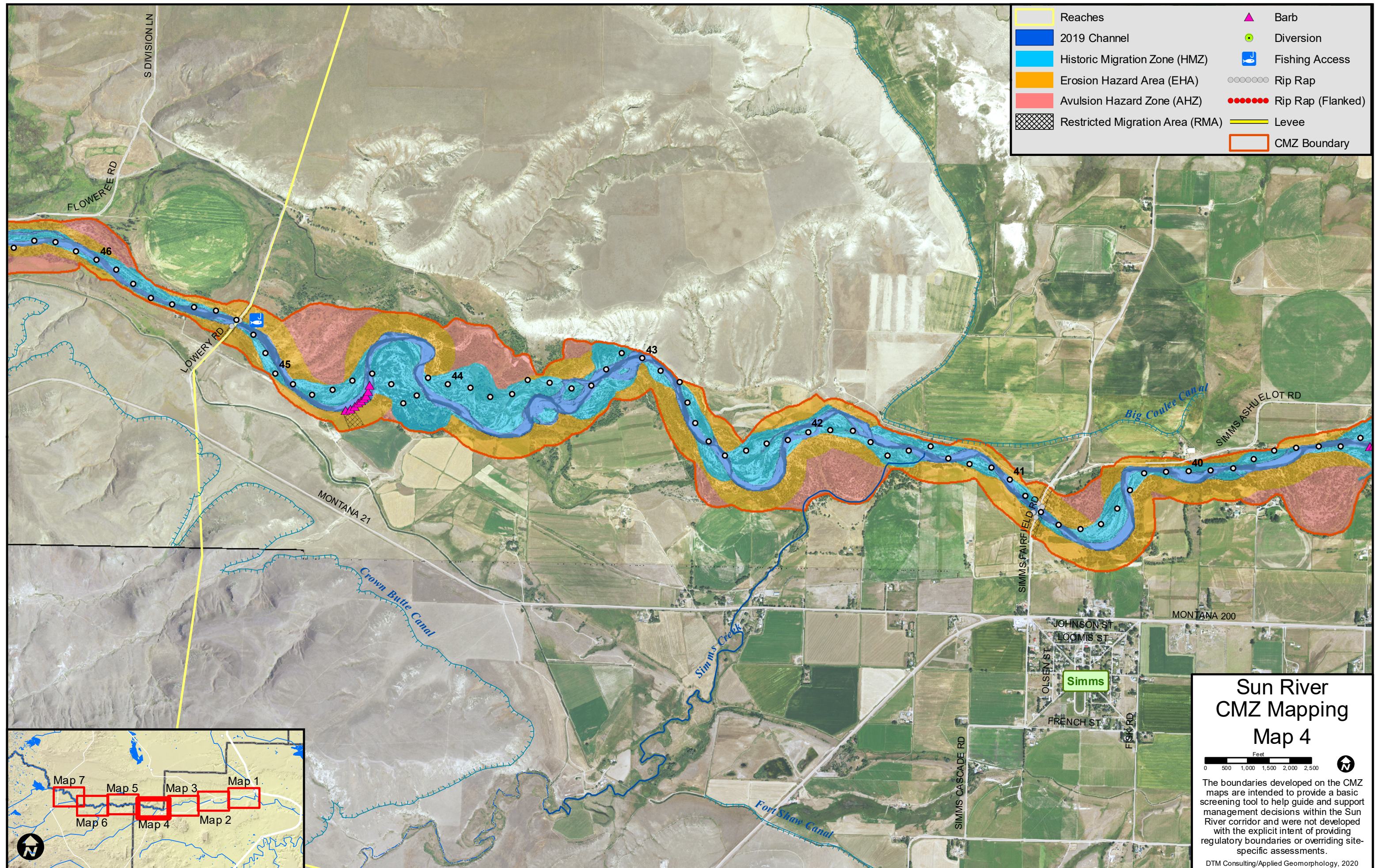
The boundaries developed on the CMZ maps are intended to provide a basic screening tool to help guide and support management decisions within the Sun River corridor and were not developed with the explicit intent of providing regulatory boundaries or overriding site-specific assessments.

DTM Consulting/Applied Geomorphology, 2020









**Sun River  
CMZ Mapping  
Map 4**

Feet  
0 500 1,000 1,500 2,000 2,500

The boundaries developed on the CMZ maps are intended to provide a basic screening tool to help guide and support management decisions within the Sun River corridor and were not developed with the explicit intent of providing regulatory boundaries or overriding site-specific assessments.

DTM Consulting/Applied Geomorphology, 2020



