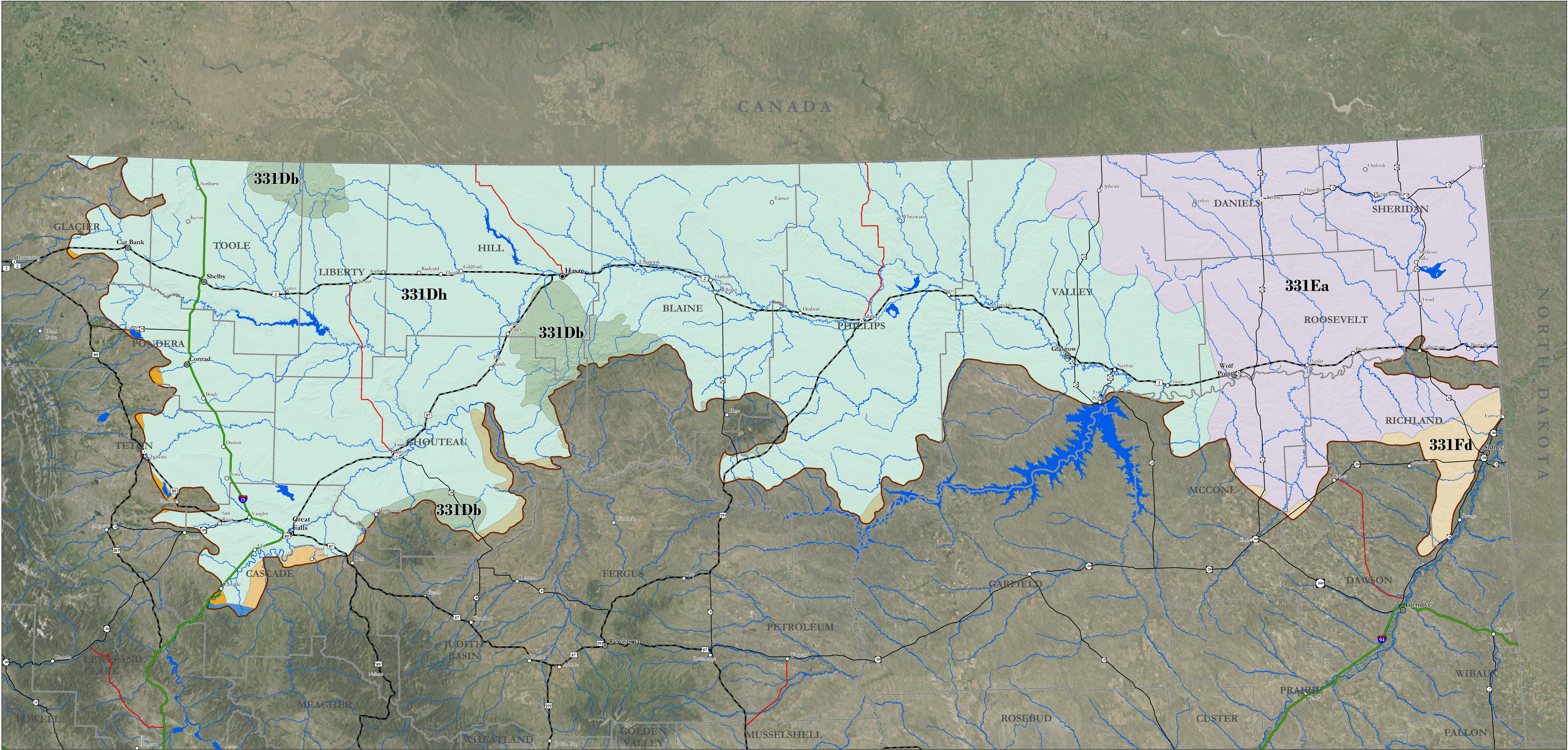


Bird Conservation Region 11 - Prairie Potholes



Subsection

- | | |
|--|-------------------------------------|
| 331Da Rocky Mountain Front Foothills | 331Ea Missouri Coteau |
| 331Db Montana Isolated Mountain Ranges | 331Fd Missouri Plateau |
| 331Dc Belt Mountain Foothills | M332De Continental Divide Foothills |
| 331Df Missouri River Breaks | M332Dg Big Belt Foothills |
| 331Dh Montana Glaciated Plains | |

This data should be used for planning purposes only. This data set is provided "as-is" without warranty of any kind. The NRCS makes no representations or warranties whatsoever with respect to the accuracy or completeness of this data set and assumes no responsibility for the suitability of this data set for a particular purpose; and NRCS will not be liable for any damages incurred as a result of errors in this data set.

Ecological Units of the Northern Region: Subsections Source Scale 1:500,000

This map displays the subsection level of the National Hierarchical Framework of Ecological Units published in 1997. Subsections are smaller areas of sections with similar surficial geology, lithology, geomorphic process, soil groups, subregional climate, and potential natural communities (ECOMAP 1993). Each subsection has landscape components that differentiate it from adjacent subsections. The differentia include geologic materials, geomorphic features and climate. Other components, or accessory characteristics, such as soils and vegetation are used to describe the subsections but are not used to delineate the units.

