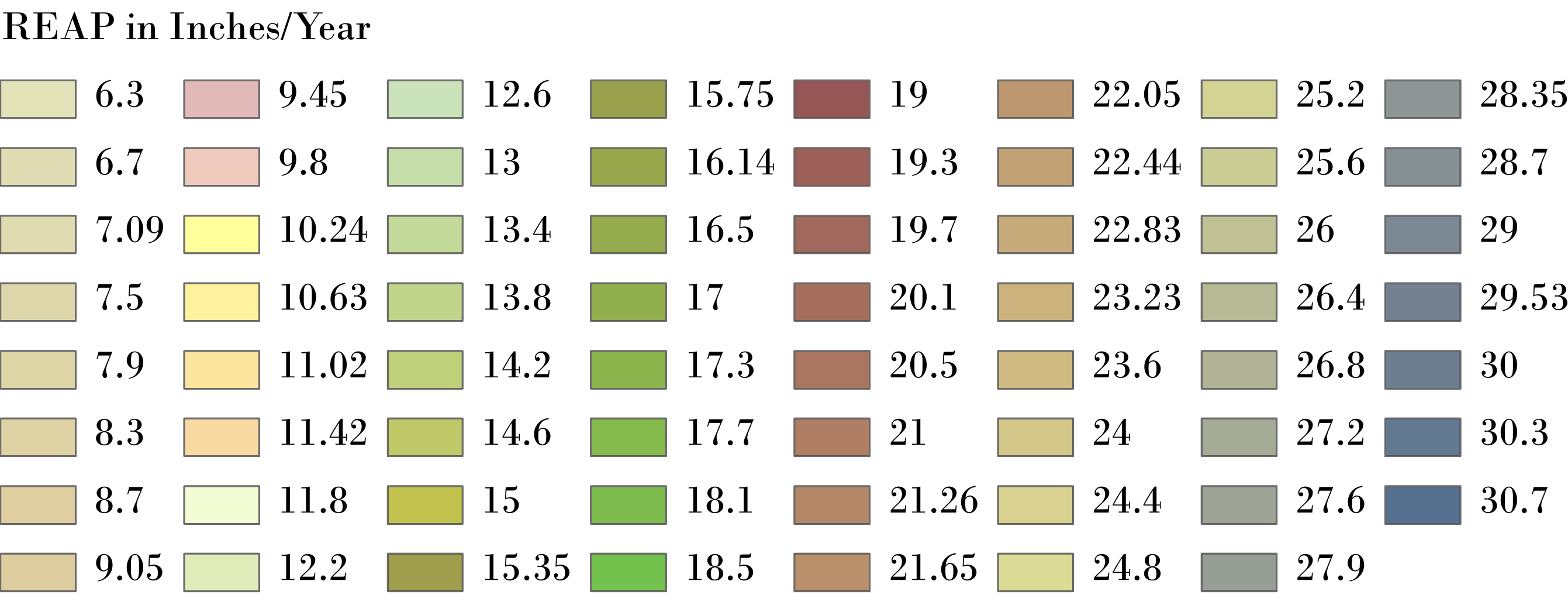
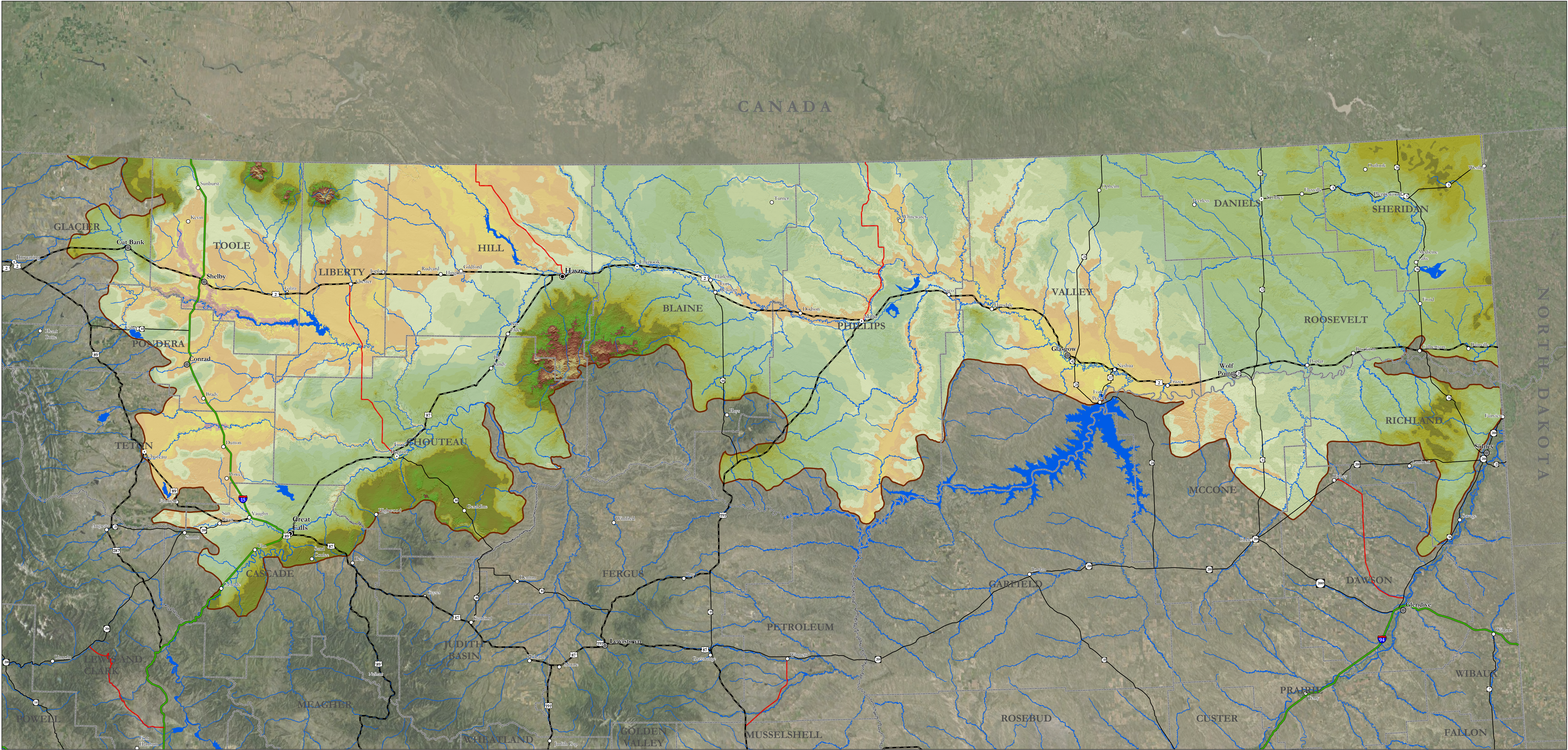


Bird Conservation Region 11 - Prairie Potholes



Relative Effective Annual Precipitation (REAP)

Relative Effective Annual Precipitation (REAP) values were developed for each Montana county and Yellowstone Park by the Natural Resources Conservation Service Montana State Office (NRCS). DAYMET precipitation data from the University of Montana were verified/adjusted to the 30-year precipitation data period from the National Water and Climate Center and then sensitized to the landscape according to slope and aspect. This was calibrated by soil scientists to known vegetation breaks on the landscape based on imagery, experience in assigned areas, and published SSURGO/NASIS soils data.

This data should be used for planning purposes only. This data set is provided "as-is" without warranty of any kind. The NRCS makes no representations or warranties whatsoever with respect to the accuracy or completeness of this data set and assumes no responsibility for the suitability of this data set for a particular purpose; and NRCS will not be liable for any damages incurred as a result of errors in this data set.

