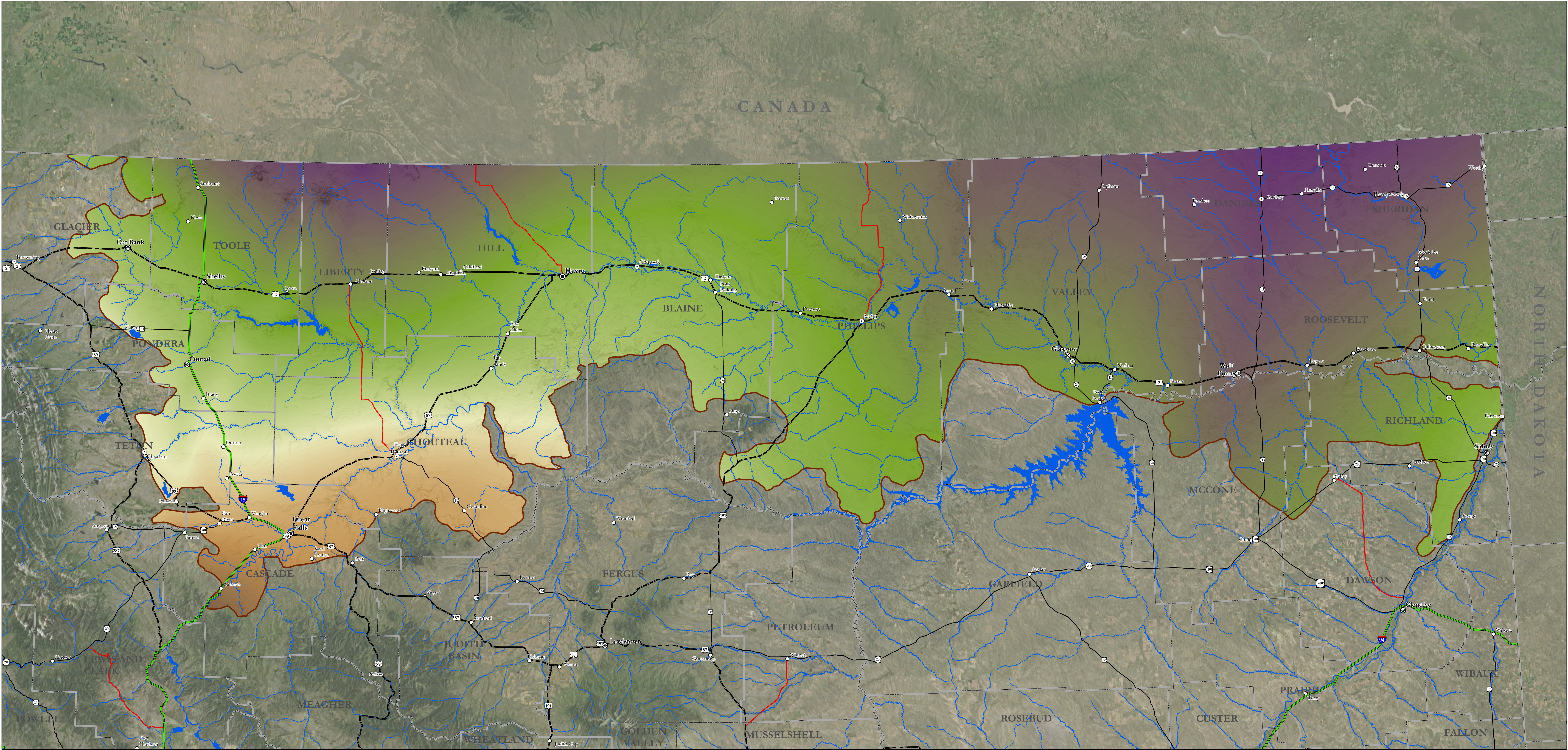
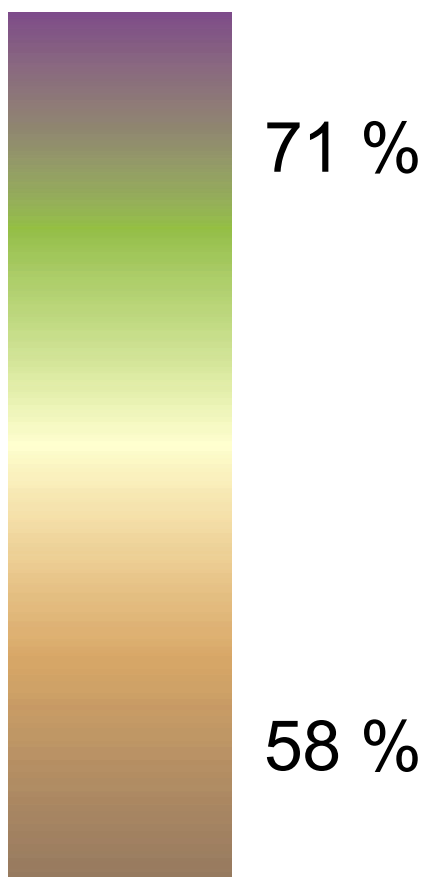


Bird Conservation Region 11 - Northern Montana Prairie



Percentage of Precipitation
Within Growing Season



Montana Precipitation Timing

The Montana Precipitation Timing is an expression of the percentage of annual precipitation that occurs within the growing season. The percentage of precipitation is based on 30-year average of precipitation data within the growing season. The growing season is defined as May 1 through September 30. This data was prepared by the USDA-NRCS Montana State Office by digitizing isolines denoting the percentage of precipitation falling within the growing season based on the 30-year average precipitation data for 1971-2000. The purpose of this data is for display of precipitation timing within a growing season across Montana and input into decision processes that require knowledge of precipitation timing.

This data should be used for planning purposes only. This data set is provided "as-is" without warranty of any kind. The NRCS makes no representations or warranties whatsoever with respect to the accuracy or completeness of this data set and assumes no responsibility for the suitability of this data set for a particular purpose; and NRCS will not be liable for any damages incurred as a result of errors in this data set.

