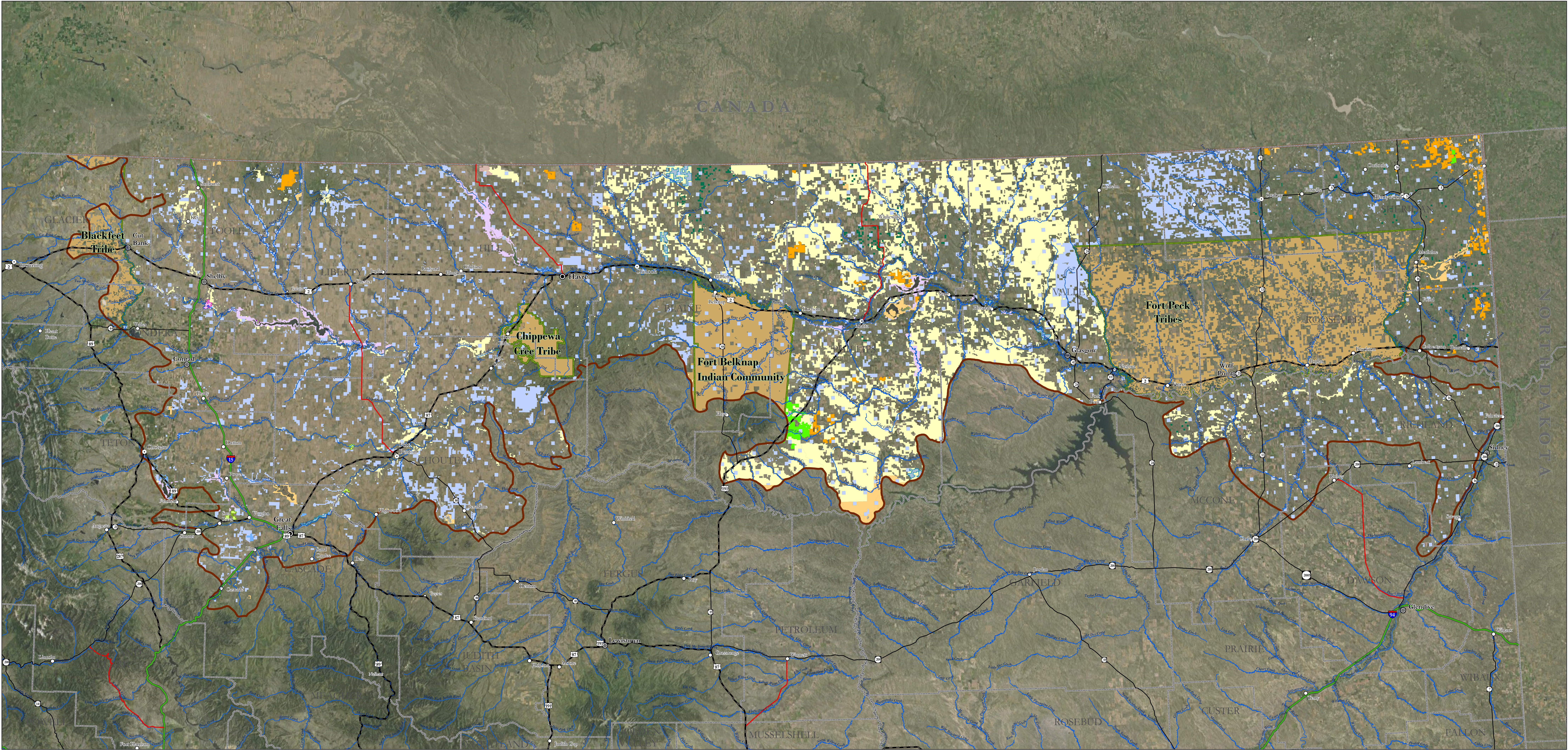


Bird Conservation Region 11 - Prairie Potholes



Land Ownership Categories

- | | |
|---|--|
| Bureau of Indian Affairs Trust Land Easement Holder | Ducks Unlimited (Wetlands America Trust) |
| Turtle Mountain Allotted Lands | Montana Fish, Wildlife, and Parks |
| US Bureau of Land Management | Montana Land Reliance |
| US Bureau of Reclamation | Rocky Mountain Elk Foundation |
| US Fish and Wildlife Service | The Nature Conservancy |
| US Forest Service | US Bureau of Reclamation |
| US Army Corps of Engineers | US Department of Agriculture |
| Montana State Trust Lands | US Fish and Wildlife Service |
| Montana Fish, Wildlife, and Parks | |
| Local Government | |

This data should be used for planning purposes only. This data set is provided "as-is" without warranty of any kind. The NRCS makes no representations or warranties whatsoever with respect to the accuracy or completeness of this data set and assumes no responsibility for the suitability of this data set for a particular purpose; and NRCS will not be liable for any damages incurred as a result of errors in this data set.

Montana Land Ownership

This map displays Montana land ownership categories and includes most public land parcels that are at least 40 acres in size. In addition to public lands, it displays areas included in Tribal ownership and allotments, and some areas owned or managed by private land trusts as well as land in easements with government.

