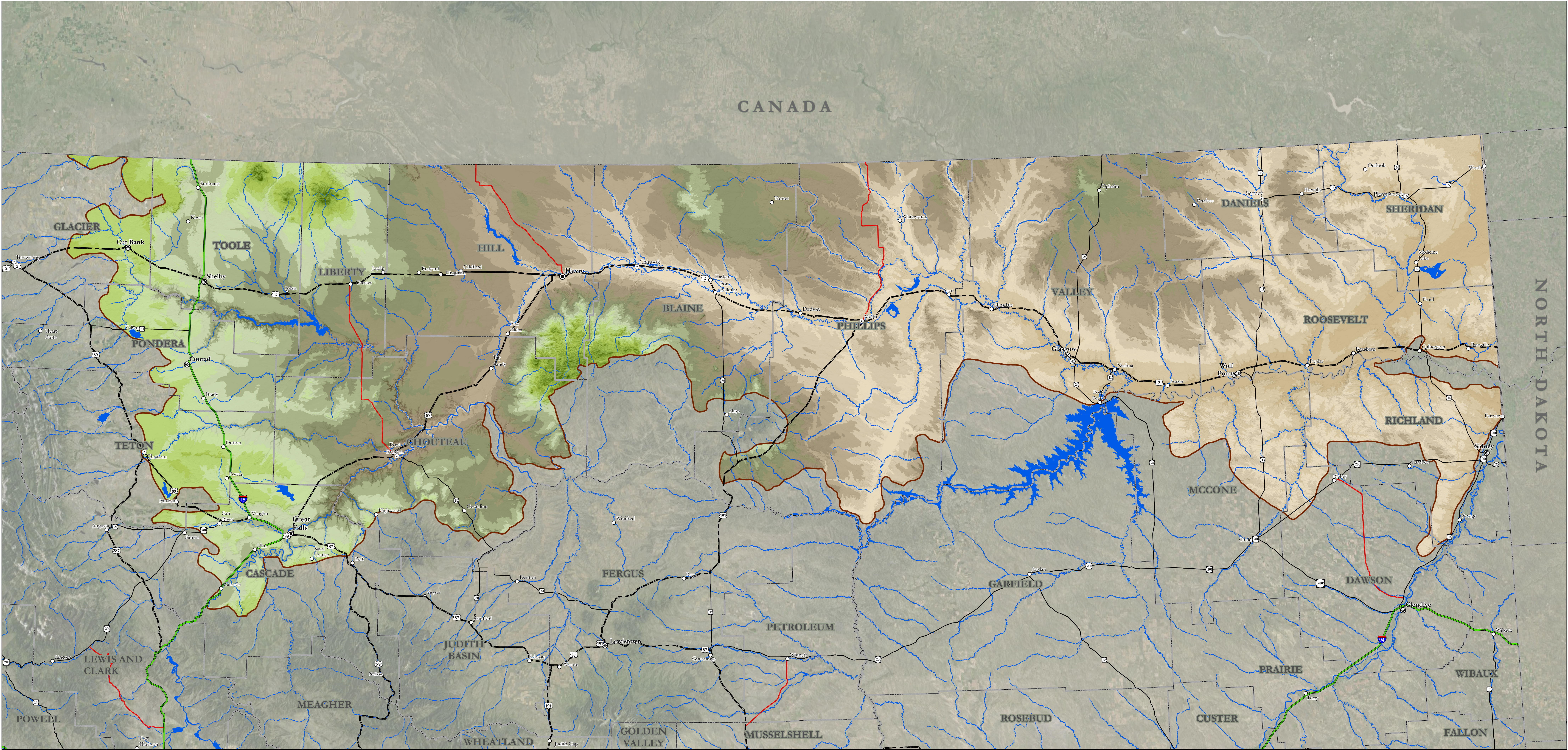


Bird Conservation Region 11 - Prairie Potholes



| Elevation Range in Meters | Elevation Range (feet) | Acres in BCR 11 | Percent of BCR 11 |
|---------------------------|------------------------|-----------------|-------------------|
| 575 <= 650 | 985 >= 1,030 | <2000 | 82,929.50 |
| 650 >= 705 | 1,030 >= 1,085 | 2000-2500 | 4,713,944.35 |
| 705 >= 750 | 1,085 >= 1,140 | 2500-3000 | 7,509,680.21 |
| 750 >= 800 | 1,140 >= 1,210 | 3000-3500 | 4,854,701.68 |
| 800 >= 840 | 1,210 >= 1,335 | 3500-4000 | 2,736,812.44 |
| 840 >= 890 | 1,335 >= 1,530 | 4000-4500 | 502,779.40 |
| 890 >= 935 | 1,530 >= 2,130 | 4500-5000 | 86,982.29 |
| 935 >= 985 | | 5000-5500 | 43,803.74 |
| | | 5500-6000 | 14,817.97 |
| | | 6000-6500 | 3,637.56 |
| | | 6500-7000 | 867.93 |
| | | 7000-7195 | 101.81 |

This data should be used for planning purposes only. This data set is provided "as-is" without warranty of any kind. The NRCS makes no representations or warranties whatsoever with respect to the accuracy or completeness of this data set and assumes no responsibility for the suitability of this data set for a particular purpose; and NRCS will not be liable for any damages incurred as a result of errors in this data set.

Elevation Ranges in BCR 11
National Elevation Dataset (NED)

The National Elevation Dataset (NED) is a seamless mosaic of the best-available elevation that has been developed by the U.S. Geological Survey. The 7.5-minute elevation data for the conterminous United States are the primary initial source data. Processing methods were applied to resample the 7.5-minute data to 1/3 arc-second (10 meter), to filter production artifacts, convert to the NAD83 datum, edge-match, and fill slivers of missing data at quadrangle seams.

Elevations in BCR 11 range from a low of 1942 feet to a high of 7192 (574 to 2127 meters).

