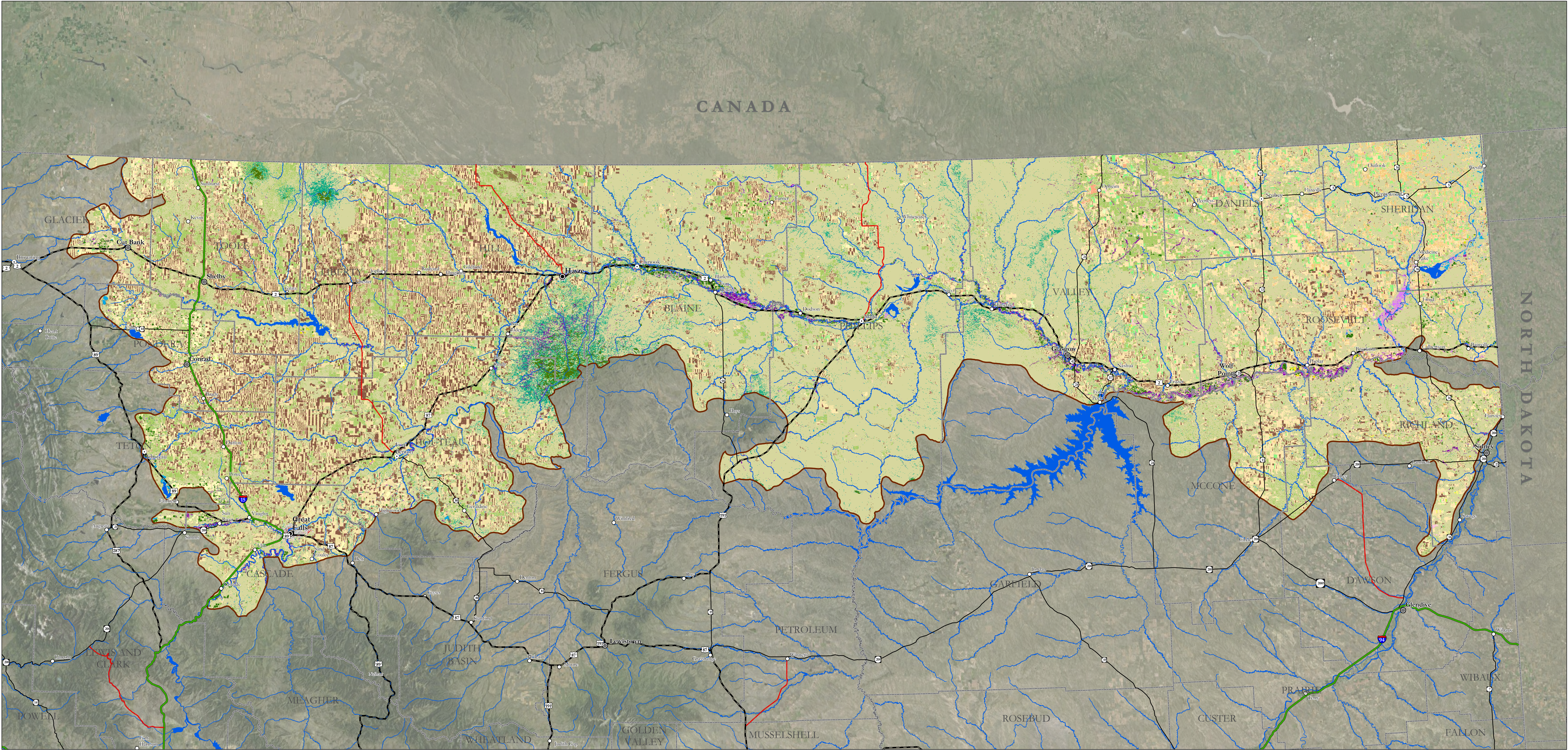


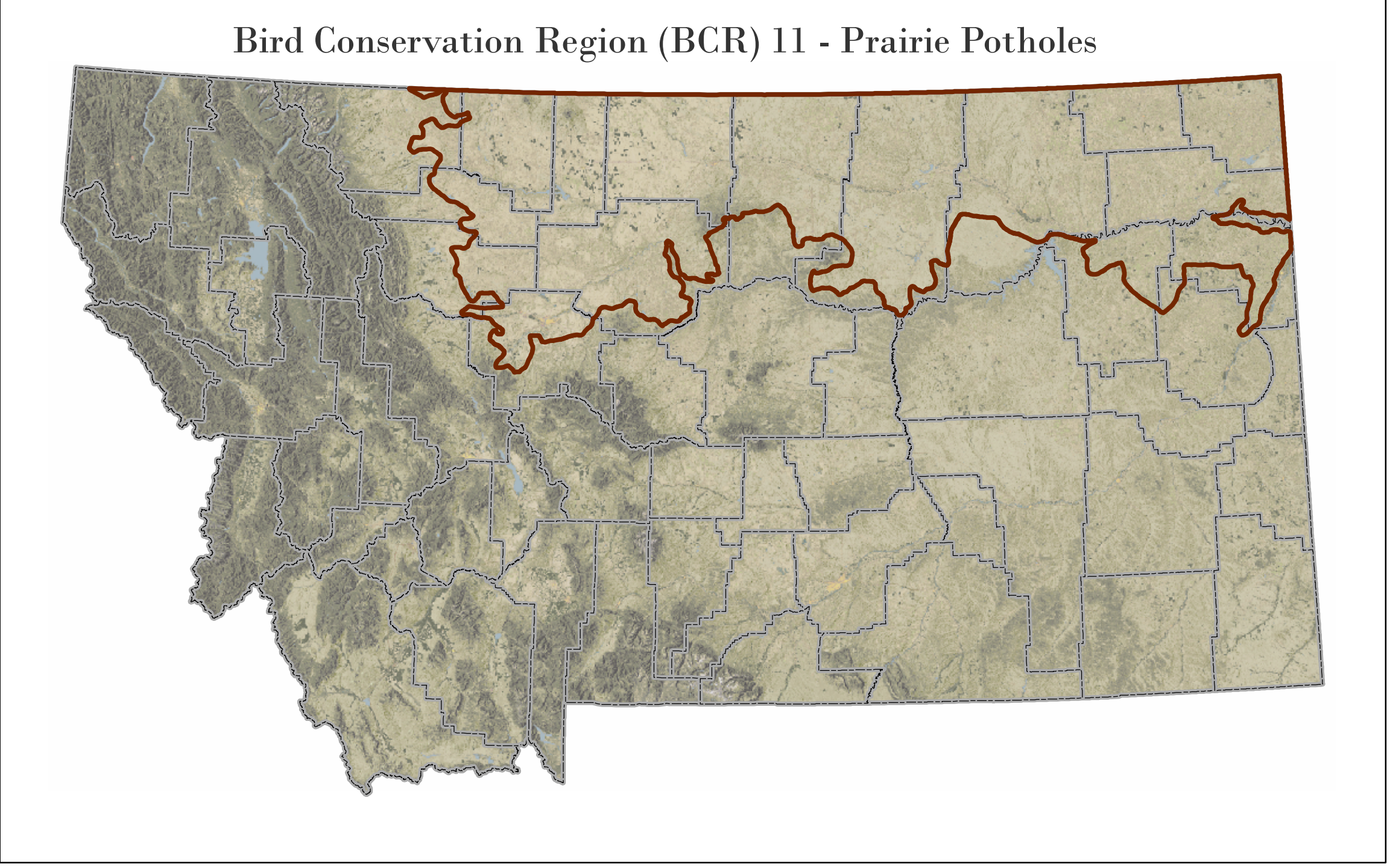
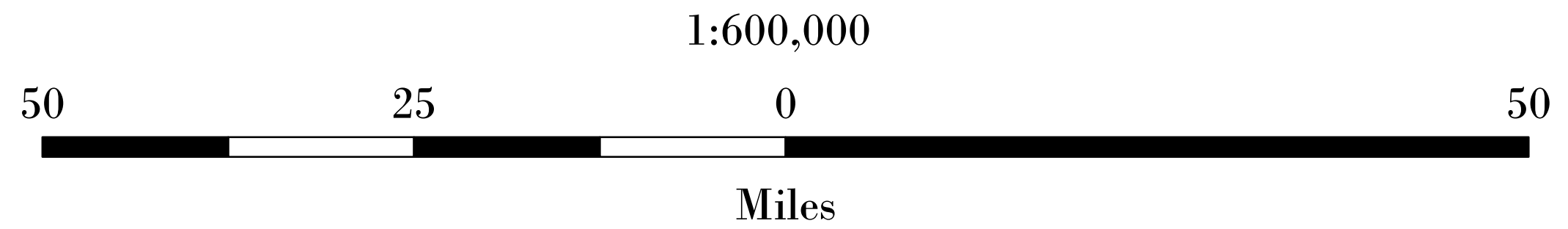
Bird Conservation Region 11 - Prairie Potholes



USDA-NASS 2007 Cropland Data Layer

Agricultural			Non-Agricultural		
Fallow/Idle Cropland	Camelina	Sorghum	NLCD - Grassland Herbaceous	NLCD - Mixed Forest	
Spring Wheat	Misc. Veggies. & Fruits	Rye	Grass/Pasture/Non-Ag	Wetlands	
Winter Wheat	Seed/Sod Grass	Clover/Wildflowers	NLCD - Developed/Open Space	Woodland	
Barley	Oats	Other Crops	NLCD - Shrubland		
Durum Wheat	Dry Beans	Soybeans	NLCD - Woody Wetlands		
Peas	Canola		NLCD - Open Water		
Alfalfa	Sugarbeets		NLCD - Herbaceous Wetlands		
Lentils	Sunflowers		NLCD - Evergreen Forest		
Safflower	Millet		NLCD - Developed/Low Intensity		
Corn	Potatoes		NLCD - Barren		
Flaxseed	Other Small Grains		NLCD - Deciduous Forest		
			NLCD - Developed/Medium Intensity		
			NLCD - Developed/High Intensity		

This data should be used for planning purposes only. This data set is provided "as-is" without warranty of any kind. The NRCS makes no representations or warranties whatsoever with respect to the accuracy or completeness of this data set and assumes no responsibility for the suitability of this data set for a particular purpose; and NRCS will not be liable for any damages incurred as a result of errors in this data set.



The USDA, NASS Cropland Data Layer (CDL) is a raster, geo-referenced, crop-specific land cover data layer with a ground resolution of 56 meters. The CDL is produced using satellite imagery from the Indian Remote Sensing RESOURCESAT-1 (IRS-P6) Advanced Wide Field Sensor (AWiFS) collected during the current growing season. Ancillary classification inputs include: the United States Geological Survey (USGS) National Elevation Dataset (NED), the USGS National Land Cover Dataset 2001 (NLCD 2001), and the National Aeronautics and Space Administration (NASA) Moderate Resolution Imaging Spectroradiometer (MODIS) 250 meter 16 day Normalized Difference Vegetation Index (NDVI) composites. Agricultural training and validation data are derived from the Farm Service Agency (FSA) Common Land Unit (CLU) Program. The NLCD 2001 is used as non-agricultural training and validation data. The strength and emphasis of the CDL is agricultural land cover. Please note that no farmer reported data are derivable from the Cropland Data Layer. The purpose of the Cropland Data Layer Program is to use satellite imagery to (1) provide acreage estimates to the Agricultural Statistics Board for the state's major commodities and (2) produce digital, crop-specific, categorized geo-referenced output products.