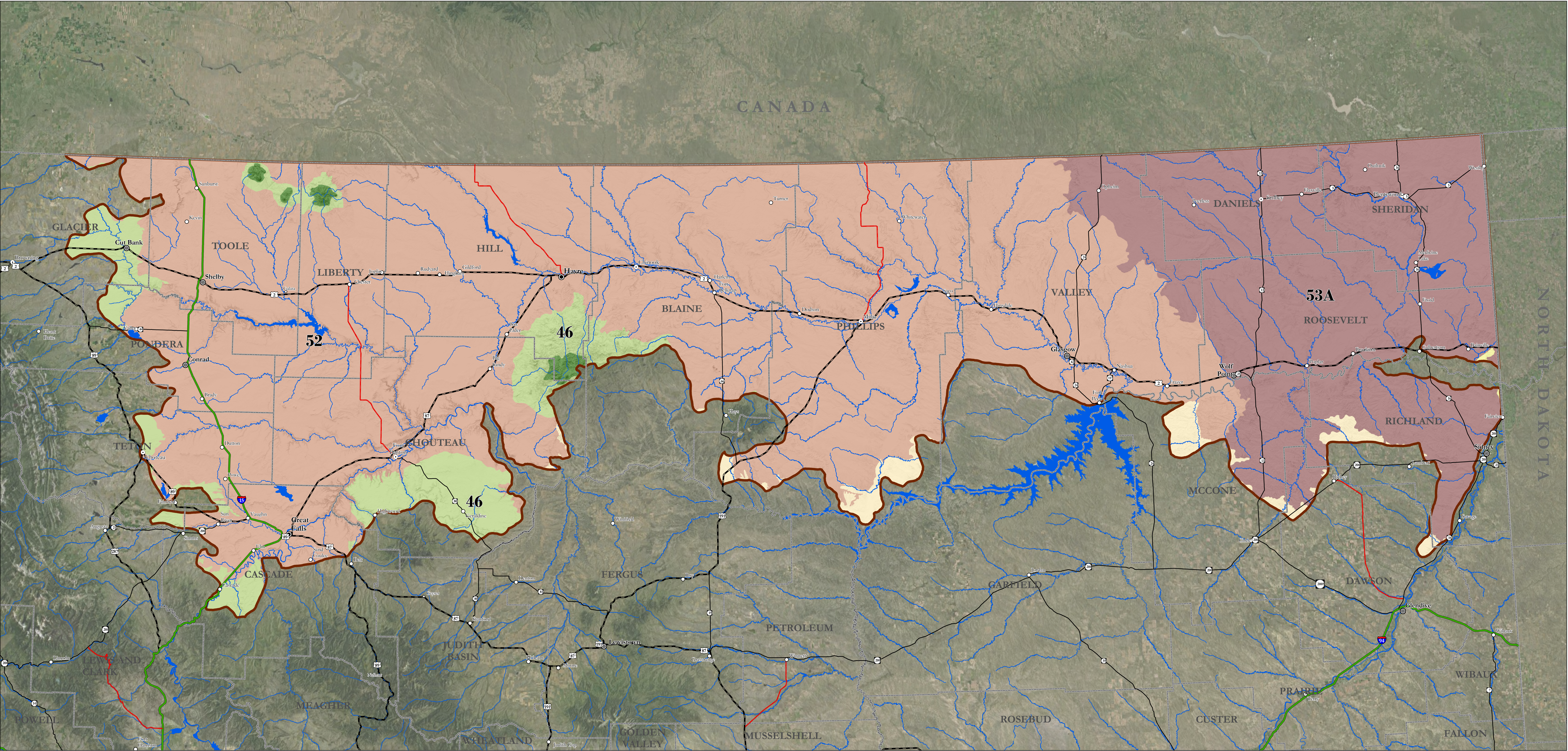


Bird Conservation Region 11 - Prairie Potholes



- Major Land Resource Areas
- 52, Brown Glaciated Plains
 - 53A, Northern Dark Brown Glaciated Plains
 - 46, Northern Rocky Mountain Foothills
 - 58A, Northern Rolling Plains, Northern Part
 - 43B, Central Rocky Mountains
 - 54, Soft Shale Plains

USDA-NRCS Major Land Resource Areas (MLRAs)
Source Scale: 1:250,000

This map displays the Major Land Resource Area (MLRA) boundaries within BCR 11. Major land resource areas (MLRAs) are geographically associated land resource units (LRUs). MLRAS are divisions of the USA based on major soil patterns, climate, and land use; they are intended to stratify the country for use in resource inventory. Identification of these large areas is important in statewide agricultural planning and has value in interstate, regional, and national planning. There are 278 major land resource areas in the United States, six occur in varying amounts BCR 11.

This data should be used for planning purposes only. This data set is provided "as-is" without warranty of any kind. The NRCS makes no representations or warranties whatsoever with respect to the accuracy or completeness of this data set and assumes no responsibility for the suitability of this data set for a particular purpose; and NRCS will not be liable for any damages incurred as a result of errors in this data set.

