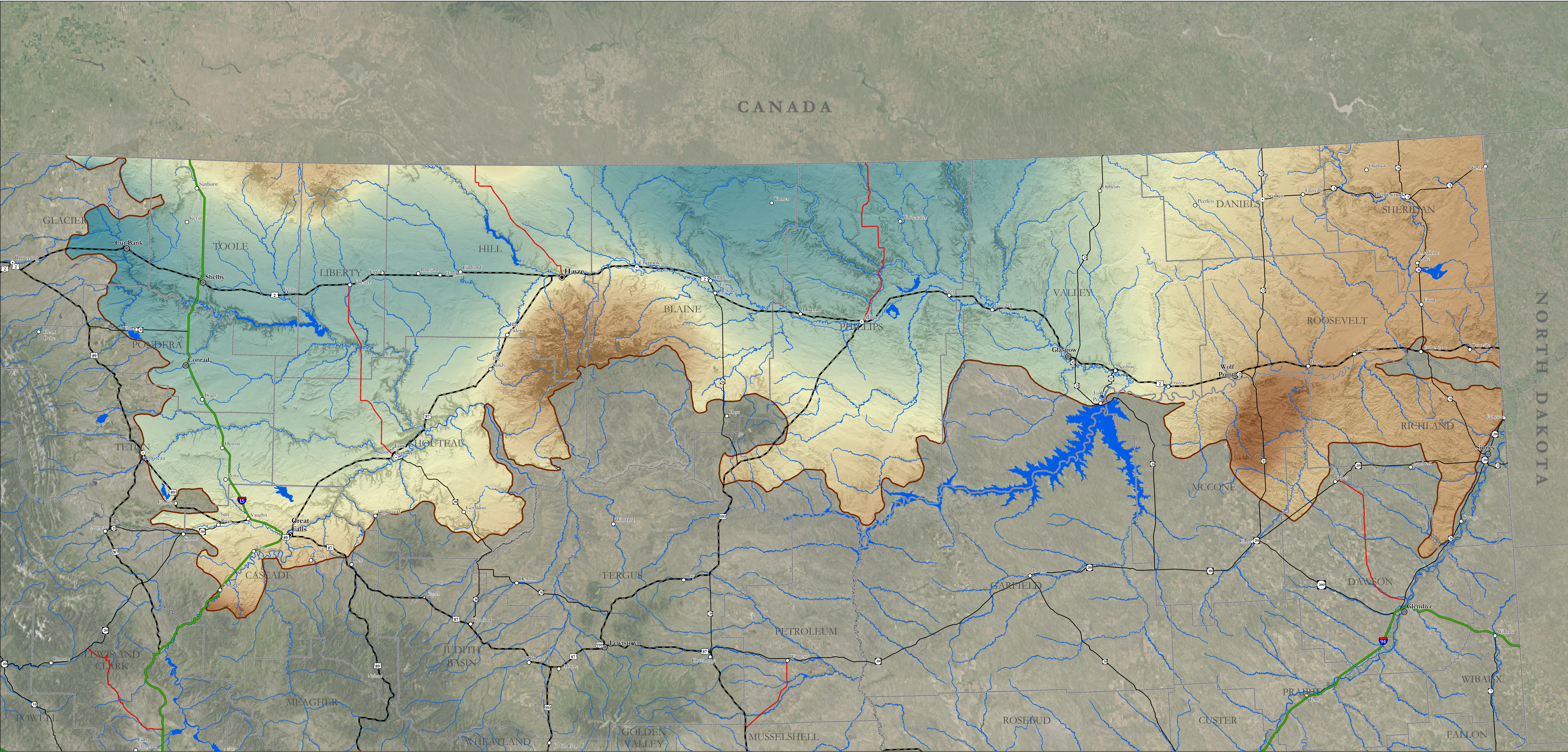
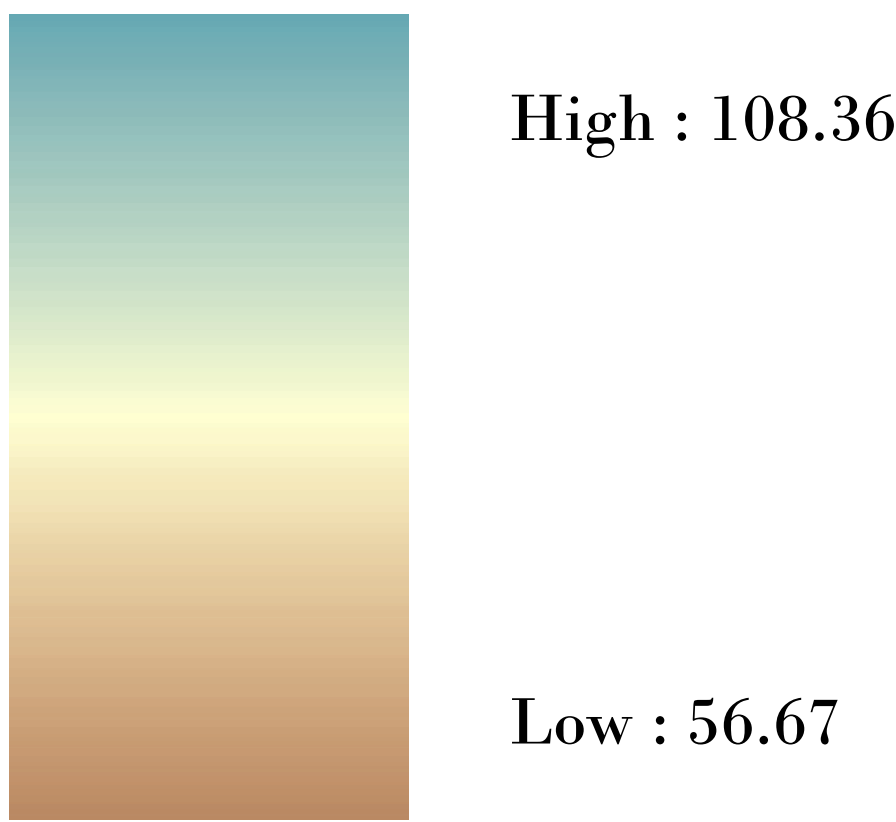


# Bird Conservation Region 11 - Prairie Potholes



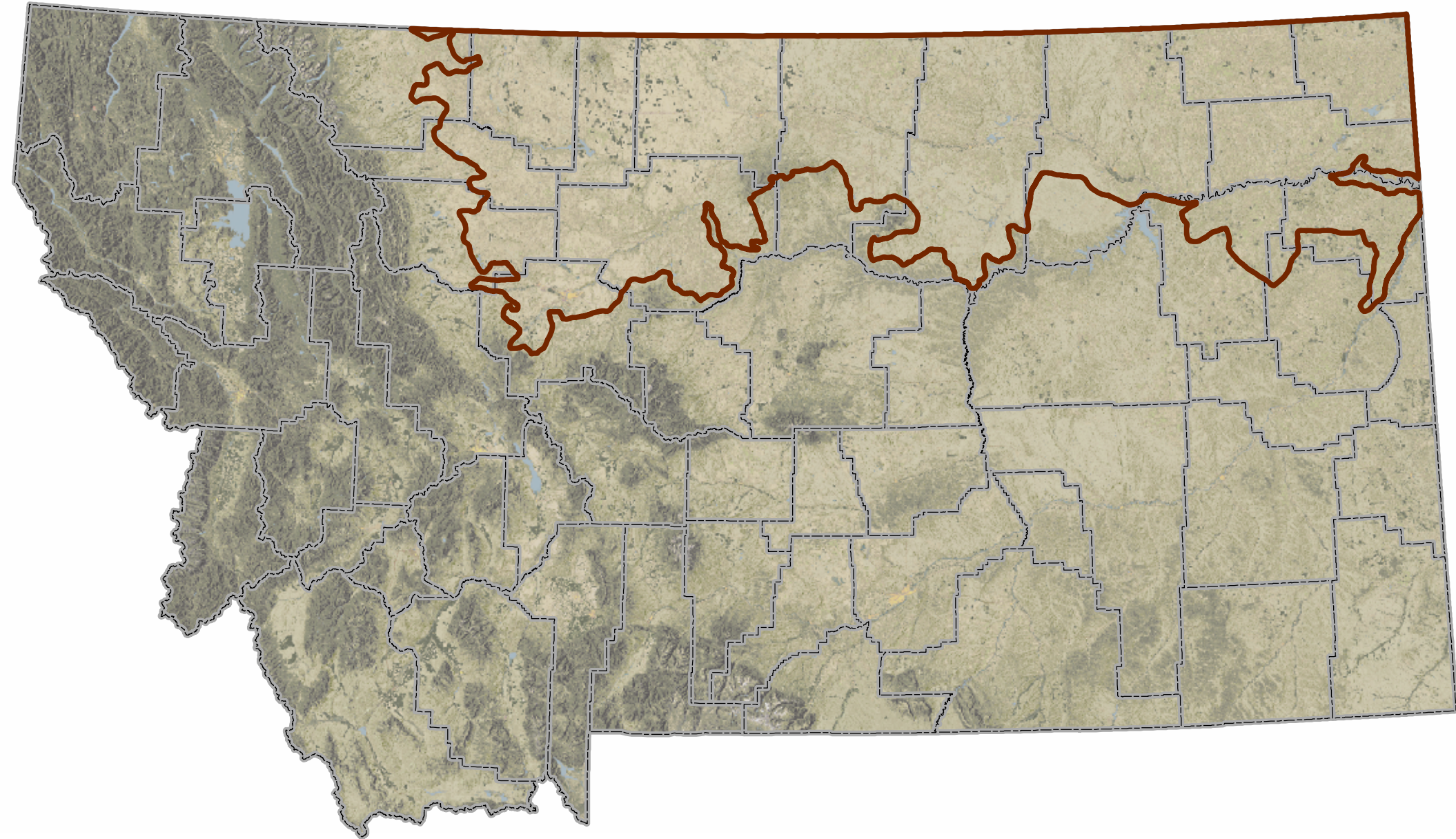
C Factor Percentages



Annual C-Factor (Climatic Erosivity)

The climatic factor characterizes climatic erosivity, specifically wind-speed and surface soil moisture. The factor for any given locality is expressed as a percentage of the C factor for Garden City, Kansas, which has a value of 100. The purpose of this data is to display C factor values across Montana and input into decision processes that require knowledge of climatic erosivity. This data was developed by the USDA-NRC Montana State Office by interpolating to 500 meter grid cells the Montana C factors from digitized isolines produced for the 1987 annual C-Factor map for Montana.

Bird Conservation Region (BCR) 11 - Prairie Potholes



This data should be used for planning purposes only. This data set is provided "as-is" without warranty of any kind. The NRCS makes no representations or warranties whatsoever with respect to the accuracy or completeness of this data set and assumes no responsibility for the suitability of this data set for a particular purpose; and NRCS will not be liable for any damages incurred as a result of errors in this data set.