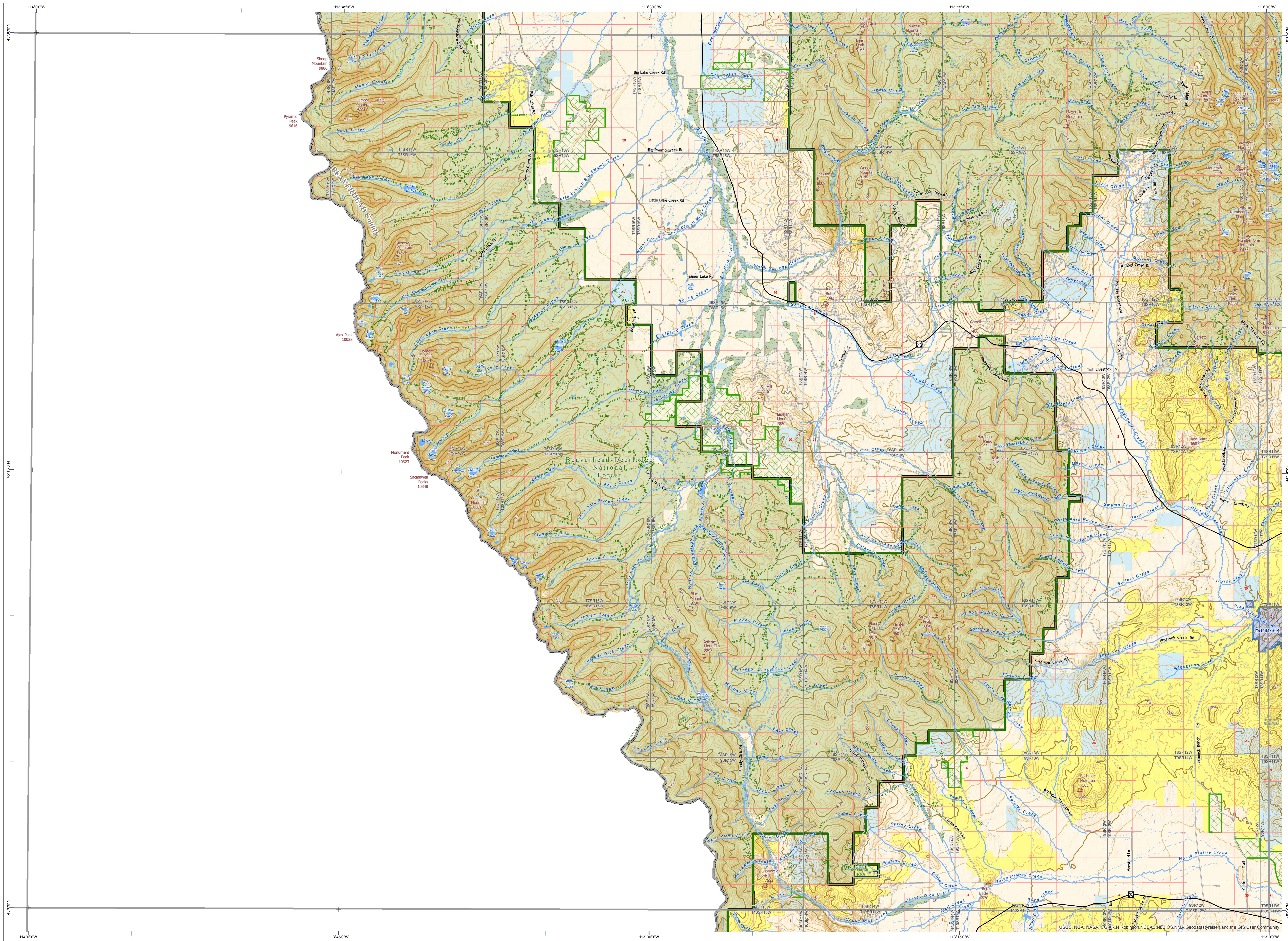


Salmon Quadrangle - 45113a Montana Public Land & Management Map



Public Ownership on this Map

US Bureau of Land Management	MT Fish Wildlife & Parks
US Forest Service	MT State Trust Lands
Local Government	

Management Areas on this Map

Conservation Easement	Montana Fish Wildlife & Parks, State Park
BLM - Wilderness Study Area	USFS National Forest
USFS National Area	USFS Natural Area

Scale 1:100,000
1 inch equals 1.57 miles

Notice: This map is not intended as a legal depiction of public or private land boundaries.

Montana Public Ownership and Management Types, not necessarily present on this map

US Bureau of Land Management	MT Fish Wildlife & Parks	Conservation Easement	BLM Wild & Scenic River
US Forest Service	MT State Trust Lands	Montana Fish Wildlife & Parks, State Park	BLM Wilderness Area
Local Government	MT Dept of Corrections	Montana Fish Wildlife & Parks, Wildlife Management Area	BLM - Wilderness Study Area
	MT Dept of Transportation	Montana State Forest	USFS National Forest
	MT Dept of Natural Resources	USFWS Fish Tech. Center	USFS National Area
	Montana University System	National Fish Hatchery	USFS Wild and Scenic River
	Other State of Montana	USFWS National Wildlife Refuge	USFS Wilderness
	US Dept of Defense	USFWS Wildlife Management Area	
		USFWS Wilderness	

CAUTION:

- Not all legend items may appear on this map.
- Some Public Land data types were symbolized together by broad government categories for display on this map.
- Land management features shown on this map are not intended as a legal depiction of public or private surface and ownership boundaries and should not be used in place of a survey conducted by a licensed land surveyor.
- Public ownership of land does not imply public access. Not all public parcels or roads shown on this map are open to the public. Inquire locally to learn if you can enter certain land parcels or drive on certain road. **Ask first!**
- Map features shown, including conservation easements AND ROADS, do not imply public access to any lands.

MAP DISCLAIMER:
The Montana State Library Geographic Information Services provides this product/service for informational purposes only. The Library did not produce it for, nor is it suitable for legal, engineering, or surveying purposes. Consumers of this information should review or consult the primary data and information sources to ascertain the viability of the information for their purposes. The Library provides these data in good faith but does not represent or warrant its accuracy, adequacy, or completeness. In no event shall the Library be liable for any incorrect results or analysis; any direct, indirect, special, or consequential damages to any party; or any lost profits arising out of or in connection with the use of the inability to use the data or the services provided. The Library makes these data and services available as a convenience to the public, and for no other purpose. The Library reserves the right to change or revise published data and/or services at any time.

For questions about the data displayed here or to report errors, please contact the Montana State Library at: 406-444-5354 or geoinfo@mt.gov.

SOURCE INFORMATION:
Public Land data: Montana State Library
Land Management data: Montana State Library, U.S. Forest Service, U.S. Fish and Wildlife Service, Bureau of Land Management, Montana Fish, Wildlife & Parks
Base map data: Montana Spatial Data Infrastructure (MSDI) including Transportation, Elevation, Hydrography, Public Land Survey System, Administrative Boundaries, Geographic Names, and Cadastral datasets

Montana Public Land Map Series Index

Date: 8/26/2016
Author: Duane F. Lund