

County	Prairie	Upstream River Mile	149.2
Classification	CM: Confined meandering	Downstream River Mile	137
General Location	To Terry Bridge	Length	12.20 mi (19.63 km)

Narrative Summary

Reach D1 is located in Prairie County, and extends from just below the mouth of the Powder River to Terry. The reach is a 12.2 mile long Confined Meandering (CM) reach type, indicating that the river flows along a meandering course that is confined by older geologic units. Sandstones of the Fort Union Formation and younger erosion-resistant terraces confine the channel through the reach. Because of the geologic confinement, channel migration rates are low and the riparian corridor is notably thin or absent. There is one Fishing Access Site at the upper end of the reach at the Powder River confluence (Powder River Depot).

There are less than 1000 feet of bank armor in the reach; including about 550 feet of rock riprap and 140 feet of flow deflectors. The flow deflectors were all built between 2001 and 2011. During that timeframe there was a loss of 650 feet of rock riprap where it was protecting an old railroad bridge at RM 144.5. The bridge was built in 1907 for the railroad and now serves County Road 42.

Wolf Rapids is located on the apex of a large meander at RM 146. These rapids are formed from an exposed bedrock shelf that extends across the entire river.

Reach D1 has lost almost a mile of side channel length since 1950, but none of this loss has been associated with intentional blockages. There has been 126 acres of riparian recruitment into abandoned 1950s channels.

Land use is predominantly agricultural, and there has been 310 acres of land developed under pivot irrigation. There are two animal handling facilities just north of Terry that are adjacent to old swales. One dump site was mapped on the right bank of the river at RM 137.5R, about ¾ miles upstream from the Terry Bridge.

About 51 percent of the historic 5-year floodplain has become isolated, primarily due to flow alterations. The abandoned Milwaukee rail line embankment has been breached by river erosion in several locations on the south side of the river.

A total of four ice jams have been reported in the reach. One of these events was in February (1996), and three occurred in March (1993, 2009, and 2011). No damages were reported.

There are about 20 acres of mapped Russian olive in the reach.

A hydrologic evaluation of flow depletions indicates that flow alterations over the last century have been major in this reach. The 2-year flood, which strongly influences overall channel form, has dropped by 22 percent. Low flows have also been impacted; severe low flows described as 7Q10 (the lowest average 7-day flow anticipated every ten years) for summer months has dropped from an estimated 4,850 cfs to 2,810 cfs with human development, a reduction of 42 percent. More typical summer low flows, described as the summer 95% flow duration, have dropped from 6,940 cfs under unregulated conditions to 3,270 cfs under regulated conditions, a reduction of 53 percent.

CEA-Related observations in Reach D1 include:

- Breaching of abandoned Milwaukee Railroad line

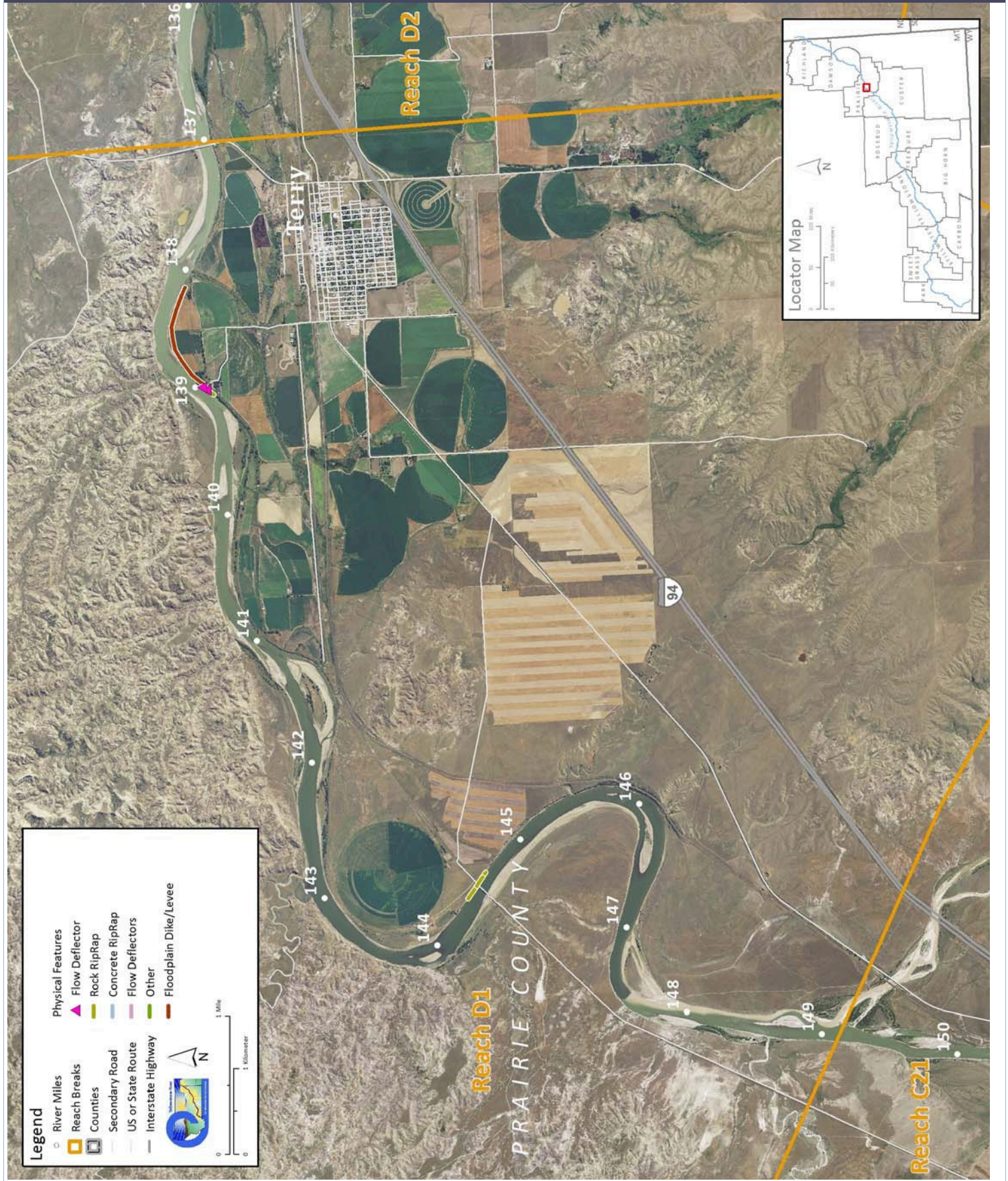
Recommended Practices (may include Yellowstone River Recommended Practices--YRRPs) for Reach D1 include:

- Dump site Practice at RM 137.5R
- Russian olive removal

The following table summarizes some key CEA results that have been used to describe overall condition and types of human influences affecting the river. The values are specific to this single reach. Blanks indicate that a particular value was not available for this area. This information is consolidated from a large dataset that is presented in more detail in the full reach narrative report.

Discharge	Undev.	Developed	% Change	"Undeveloped" flows represent conditions prior to significant human development, whereas "developed" flows reflect the current condition of both consumptive and non-consumptive water use.		
2 Year (cfs)	68,200	53,000	-22.3%			
100 Year (cfs)	140,000	119,000	-15.0%			
Bankfull Channel Area (Ac)	1950	1976	1995	2001	1950-2001	Bankfull channel area is the total footprint of the river inundated at approx. the 2-year flood.
	1,265.9	1,213.5	1,213.1	1,230.9	-34.9	
Physical Features	2011 Length (ft)	% of Bankline	2001-2011 Change	There are additional types of bank armor such as car bodies and steel retaining walls, but they are relatively minor.		
Rock RipRap	545	0.4%	-651			
Concrete Riprap	0	0.0%	0			
Flow Deflectors	243	0.2%	243			
Total	787	0.6%	-409			
Length of Side Channels Blocked (ft)	Pre-1950s	Post-1950s	Numerous side channels have been blocked by small dikes.			
	0	0				
Floodplain Turnover	1950 - 1976	1976 - 2001	1950-2001 In-channel riparian encroachment (negative number indicates retreat)	The rate of floodplain turnover reflects how many acres of land are eroded by the river. Turnover is associated with the creation of riparian habitat.		
Total Acres	88.0	68.1	7.17 acres			
Acres/Year	3.4	2.7				
Acres/Year/Valley Mile	0.4	0.3				
Open Bar Area	Point Bars	Bank Attached	Mid-Channel	Total	The type and extent of open sand and gravel bars reflect in-stream habitat conditions that can be important to fish, amphibians, and ground-nesting birds such as least terns.	
Change in Area '50 - '01 (Ac)	-50.3	92.6	12.9	55.2		
Floodplain Isolation	Acres	% of FP	Floodplain isolation refers to area that historically was flooded, but has become isolated do to flow alterations or physical features such as levees.			
5 Year	95.5	51%				
100 Year	14.9	3%				
Restricted Migration Area	Acres	% of CMZ	Channel Migration Zone restrictions refer to the area and percent of the CMZ that has been isolated by features such as bank armor, dikes, levees, and transportation embankments.			
	11.8	1%				
Land Use	1950	2011	1950	2011	Changes in land use reflect the development of the river corridor through time. The irrigated agricultural are is a sub-set of the mapped agricultural land.	
Agricultural Land (Ac)	6,528.5	6,539.6	Flood (Ac)	682.4	846.1	
Ag. Infrastructure (Ac)	7.0	56.6	Sprinkler (Ac)	0.0	0.0	
Exurban (Ac)	0.0	16.2	Pivot (Ac)	0.0	310.5	
Urban (Ac)	0.0	0.0				
Transportation (Ac)	103.5	58.7				
1950s Riparian Vegetation Converted to a Developed Land Use (ac)	To Irrigated	To Other Use	Total Rip. Converted	% of 1950s Rip.	Changes in the extents of riparian vegetation are influenced by land use changes within the corridor.	
	1.2	0.2	1.4	1.0%		
National Wetlands Inventory	Acres	Acres per Valley Mi	Total Wetland Acres	Wetlands units summarized from National Wetlands Inventory Mapping include Riverine (typically open water sloughs), Emergent (marshes and wet meadows) and Shrub-Scrub (open bar areas with colonizing woody vegetation).		
Riverine	27.0	3.0	45.0			
Emergent	18.0	2.0				
Scrub/Shrub	0.0	0.0				
Russian Olive (2001) (Appx. 100-yr Floodplain)	Acres	%	Russian olive is considered an invasive species and its presence in the corridor is fairly recent. Its spread can be used as a general indicator of invasive plants within the corridor.			
	19.9	1.4%				
Riparian Forest at low risk of Cowbird Parasitism (Ac/Valley Mile)	1950	1976	2001	Change 1950-2011	Cowbirds are associated with agricultural and residential development, displacing native bird species by parasitizing their nests.	
	5.8	2.9	3.4	-2.4		

PHYSICAL FEATURES MAP (2011)



CHANNEL MIGRATION ZONE MAP

