



**MONTANA
Natural Heritage
Program**

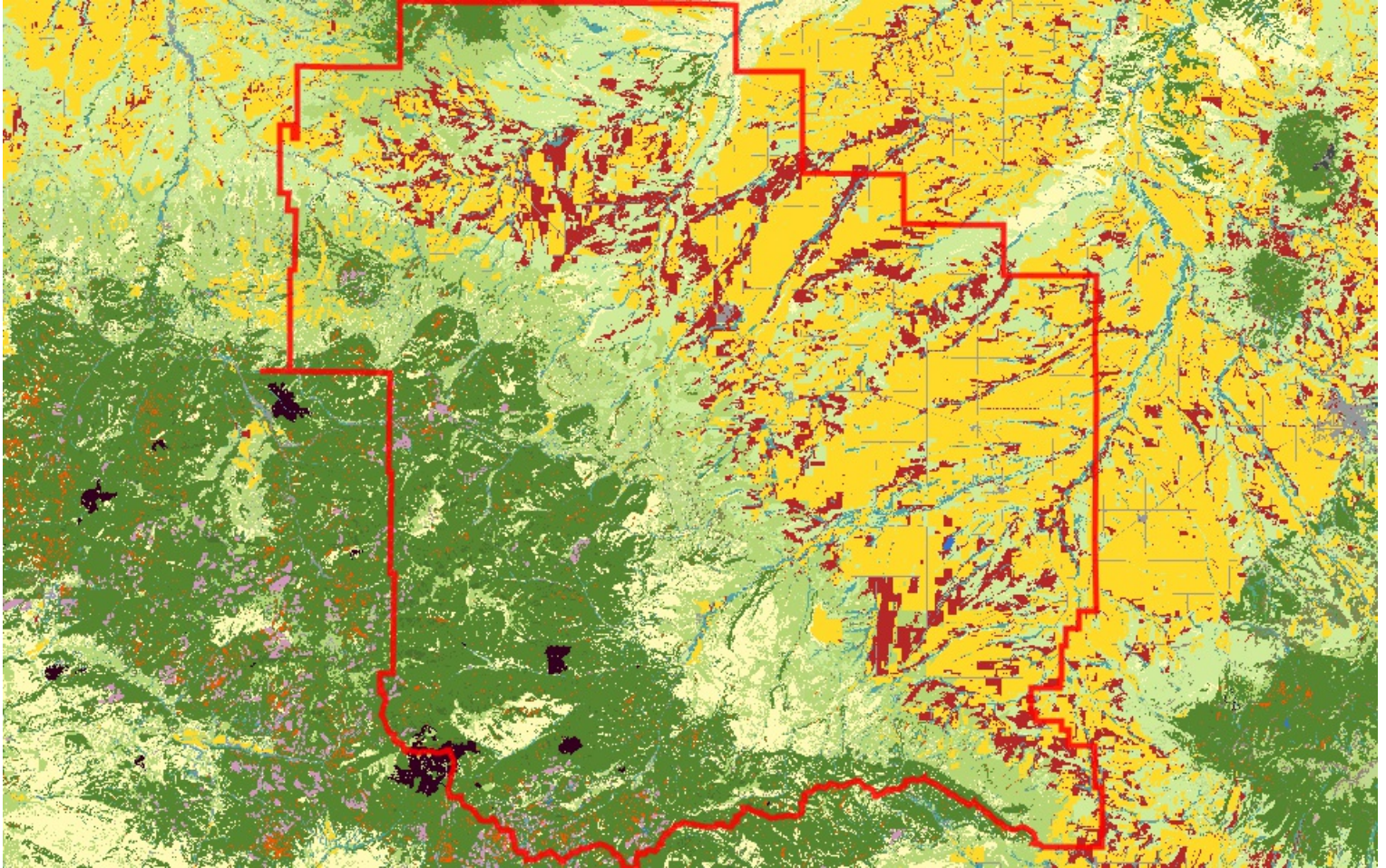
A program of the Montana State Library's
Natural Resource Information System
operated by the University of Montana.



Latitude Longitude
46.66797 -109.74895
47.42184 -110.77430

Land Cover

Summarized by: **Judith Basin** (*County*)



16%
**(186,129
Acres)**

Human Land Use Agriculture

Cultivated Crops

These areas used for the production of crops, such as corn, soybeans, small grains, sunflowers, vegetables, and cotton, typically on an annual cycle. Agricultural plant cover is variable depending on season and type of farming. Other areas include more stable land cover of orchards and vineyards.



15%
(184,073
Acres)

Grassland Systems Lowland/Prairie Grassland

Great Plains Mixedgrass Prairie

The system covers much of the eastern two-thirds of Montana, occurring continuously for hundreds of square kilometers, interrupted only by wetland/riparian areas or sand prairies. Soils are primarily fine and medium-textured. The growing season averages 115 days, ranging from 100 days on the Canadian border to 130 days on the Wyoming border. Climate is typical of mid-continental regions with long severe winters and hot summers. Grasses typically comprise the greatest canopy cover, and western wheatgrass (*Pascopyrum smithii*) is usually dominant. Other species include thickspike wheatgrass (*Elymus lanceolatus*), green needlegrass (*Nassella viridula*), blue grama (*Bouteloua gracilis*), and needle and thread (*Hesperostipa comata*). Near the Canadian border in north-central Montana, this system grades into rough fescue (*Festuca campestris*) and Idaho fescue (*Festuca idahoensis*) grasslands. Remnants of shortbristle needle and thread (*Hesperostipa curtisetata*) dominated vegetation are found in northernmost Montana and North Dakota, and are associated with productive sites, now mostly converted to farmland. Forb diversity is typically high. In areas of southeastern and central Montana where sagebrush steppe borders the mixed grass prairie, common plant associations include Wyoming big sagebrush-western wheatgrass (*Artemisia tridentata* ssp. *wyomingensis*/ *Pascopyrum smithii*). Fire and grazing are the primary drivers of this system. Drought can also impact it, in general favoring the shortgrass component at the expense of the mid-height grasses. With intensive grazing, cool season exotics such as Kentucky bluegrass (*Poa pratensis*), smooth brome (*Bromus inermis*), and Japanese brome (*Bromus japonicus*) increase in dominance; both of these rhizomatous species have been shown to markedly decrease species diversity. Previously cultivated acres that have been re-vegetated with non-native plants have been transformed into associations such as Kentucky bluegrass (*Poa pratensis*)/western wheatgrass (*Pascopyrum smithii*) or into pure crested wheatgrass (*Agropyron cristatum*) stands.



11%
(130,009
Acres)

Grassland Systems Montane Grassland

Rocky Mountain Lower Montane, Foothill, and Valley Grassland

This grassland system of the northern Rocky Mountains is found at lower montane to foothill elevations in mountains and valleys throughout Montana. These grasslands are floristically similar to Big Sagebrush Steppe but are defined by shorter summers, colder winters, and young soils derived from recent glacial and alluvial material. They are found at elevations from 548 - 1,650 meters (1,800-5,413 feet). In the lower montane zone, they range from small meadows to large open parks surrounded by conifers; below the lower treeline, they occur as extensive foothill and valley grasslands. Soils are relatively deep, fine-textured, often with coarse fragments, and non-saline. Microphytic crust may be present in high-quality occurrences. This system is typified by cool-season perennial bunch grasses and forbs (>25%) cover, with a sparse shrub cover (<10%). Rough fescue (*Festuca campestris*) is dominant in the northwestern portion of the state and Idaho fescue (*Festuca idahoensis*) is dominant or co-dominant throughout the range of the system. Bluebunch wheatgrass (*Pseudoroegneria spicata*) occurs as a co-dominant throughout the range as well, especially on xeric sites. Western wheatgrass (*Pascopyrum smithii*) is consistently present, often with appreciable coverage (>10%) in lower elevation occurrences in western Montana and virtually always present, with relatively high coverages (>25%), on the edge of the Northwestern Great Plains region. Species diversity ranges from a high of more than 50 per 400 square meter plot on mesic sites to 15 (or fewer) on xeric and disturbed sites. Most occurrences have at least 25 vascular species present. Farmland conversion, noxious species invasion, fire suppression, heavy grazing and oil and gas development are major threats to this system.



9%
(106,925
Acres)

Recently Disturbed or Modified Introduced Vegetation

Introduced Upland Vegetation - Annual and Biennial Forbland

Land cover is significantly altered/disturbed by introduced annual and biennial forbs. Natural vegetation types are no longer recognizable. Typical species that dominate these areas are knapweed, oxeye daisy, Canada thistle, leafy spurge, pepperweed, and yellow sweetclover.



8% (98,922
Acres)

Forest and Woodland Systems Conifer-dominated forest and woodland (xeric-mesic)

Rocky Mountain Lodgepole Pine Forest

This forested system is widespread in upper montane to subalpine zones of the Montana Rocky Mountains, and east into island ranges of north-central Montana and the Bighorn and Beartooth ranges of south-central Montana. These are montane to subalpine forests where the dominance of lodgepole pine (*Pinus contorta*) is related to fire history and topographic conditions. In Montana, elevation ranges from 975 to 2,743 meters (3,200-9000 feet). These forests occur on flats to slopes of all degrees and aspect, as well as valley bottoms. Fire is frequent, and stand-replacing fires are common. Following stand-replacing fires, lodgepole pinewill rapidly colonize and develop into dense, even-aged stands. Most forests in this ecological system occur as early- to mid-successional forests persisting for 50-200 years on warmer, lower elevation forests, and 150-400 years in subalpine forests. They generally occur on dry to intermediate sites with a wide seasonal range of temperatures and long precipitation-free periods in summer. Snowfall is heavy and supplies the major source of soil water used for growth in early summer. Vigorous stands occur where the precipitation exceeds 533 millimeters (21 inches). These lodgepole forests are typically associated with rock types weathering to acidic substrates, such as granite and rhyolite. In west-central Montana ranges such the Big Belts and the Rocky Mountain Front, these forests are found on limestone substrates. These systems are especially well developed on the broad ridges and high valleys near and east of the Continental Divide. Succession proceeds at different rates, moving relatively quickly on low-elevation, mesic sites and particularly slowly in high-elevation forests such as those along the Continental Divide in Montana.



Human Land Use Agriculture

Pasture/Hay

7% (79,606
Acres)

These agriculture lands typically have perennial herbaceous cover (e.g. regularly-shaped plantings) used for livestock grazing or the production of hay. There are obvious signs of management such as irrigation and haying that distinguish it from natural grasslands. Identified CRP lands are included in this land cover type.



Forest and Woodland Systems Conifer-dominated forest and woodland (xeric-mesic)

Rocky Mountain Montane Douglas-fir Forest and Woodland

7% (78,906
Acres)

In Montana, this ecological system occurs on the east side of the Continental Divide, north to about the McDonald Pass area, and along the Rocky Mountain Front. This system is associated with a dry to submesic continental climate regime with annual precipitation ranging from 51 to 102 centimeters (20-40 inches), with a maximum in winter or late spring. Winter snowpacks typically melt off in early spring at lower elevations. Elevations range from valley bottoms to 1,980 meters (6500 feet) in northern Montana and up to 2,286 meters (7500 feet) on warm aspects in southern Montana. It occurs on north-facing aspects in most areas, and south-facing aspects at higher elevations. This is a Douglas-fir (*Pseudotsuga menziesii*) dominated system without any maritime floristic composition. Fire disturbance intervals are as infrequent as 500 years, and as a result, individual trees and forests can attain great age on some sites (500 to 1,500 years). In Montana, this system occurs from lower montane to lower subalpine environments and is prevalent on calcareous substrates. Common understory shrubs include common ninebark (*Physocarpus malvaceus*), common juniper (*Juniperus communis*), Rocky Mountain juniper (*Juniperus scopulorum*), birch-leaf spiraea (*Spiraea betulifolia*), snowberry (*Symphoricarpos* species), creeping Oregon grape (*Mahonia repens*) and Canadian buffaloberry (*Shepherdia canadensis*). The Douglas-fir/pinegrass (*Calamagrostis rubescens*) type is the most ubiquitous association found within this system in Montana.



Shrubland, Steppe and Savanna Systems Sagebrush Steppe

Montane Sagebrush Steppe

6% (68,399
Acres)

This system dominates the montane and subalpine landscape of southwestern Montana from valley bottoms to subalpine ridges and is found as far north as Glacier National Park. It can also be seen in the island mountain ranges of the north-central and south-central portions of the state. It primarily occurs on deep-soiled to stony flats, ridges, nearly flat ridgetops, and mountain slopes. In general, this system occurs in areas of gentle topography, fine soils, subsurface moisture or mesic conditions, within zones of higher precipitation and areas of snow accumulation. It occurs on all slopes and aspects, variable substrates and all soil types. The shrub component of this system is generally dominated by mountain big sagebrush (*Artemisia tridentata* ssp. *vaseyana*). Other co-dominant shrubs include silver sagebrush (*Artemisia cana* ssp. *viscidula*), subalpine big sagebrush (*Artemisia tridentata* ssp. *spiciformis*), three tip sagebrush (*Artemisia tripartita* ssp. *tripartita*) and antelope bitterbrush (*Purshia tridentata*). Little sagebrush (*Artemisia arbuscula* ssp. *arbuscula*) shrublands are only found in southwestern Montana on sites with a perched water table. Wyoming big sagebrush (*Artemisia tridentata* ssp. *wyomingensis*) sites may be included within this system if occurrences are at montane elevations, and are associated with montane graminoids such as Idaho fescue (*Festuca idahoensis*), spike fescue (*Leucopoa kingii*), or poverty oatgrass (*Danthonia intermedia*). In areas where sage has been eliminated by human activities like burning, disking or poisoning, other shrubs may be dominant, especially rubber rabbitbrush (*Ericameria nauseosa*), and green rabbitbrush (*Chrysothamnus viscidiflorus*). Because of the mesic site conditions, most occurrences support a diverse herbaceous undergrowth of grasses and forbs. Shrub canopy cover is extremely variable, ranging from 10 percent to as high as 40 or 50 percent.



Forest and Woodland Systems Conifer-dominated forest and woodland (xeric-mesic)

Rocky Mountain Subalpine Dry-Mesic Spruce-Fir Forest and Woodland

3% (39,202
Acres)

Engelmann spruce (*Picea engelmannii*) and subalpine fir (*Abies lasiocarpa*) make up a substantial part of the montane and lower subalpine forests of the Montana Rocky Mountains and mountain island ranges of north-central and west-central Montana. Spruce is usually associated with fir and occurs as either a climax co-dominant or as a persistent, long-lived seral species in most upper elevation fir habitat types. Dry to mesic spruce-dominated forests range from 884-1,585 meters (2,900-5,200 feet) west of the Continental Divide, and 1585-2,073 meters (5,200-6,800 feet) east of the Continental Divide in the northern and central portions of the state. This system can be found at elevations up to 2,896 meters (9,500 feet) in southwestern Montana. Forests are found on gentle to very steep mountain slopes, high-elevation ridge tops and upper slopes, plateau-like surfaces, basins, alluvial terraces, well-drained benches, and inactive stream terraces. Tree canopy characteristics are relatively uniform. In northern Montana, Engelmann spruce hybridizes with its boreal counterpart, white spruce (*Picea glauca*). Douglas-fir (*Pseudotsuga menziesii*), lodgepole pine (*Pinus contorta*), and western larch (*Larix occidentalis*) (west of the Continental Divide) are seral but often present in these forests. The understory is comprised of a mixture of shrubs, forbs and graminoids tolerant of warmer and drier soil conditions than those found on the more mesic to wet spruce-fir system. The drier occurrences of this system are especially common on steep slopes at upper elevations throughout the eastern Rocky Mountains, whereas the more mesic occurrences form substantial cover west of the Continental Divide in the Flathead, Lolo, Bitterroot and Kootenai river drainages.



Wetland and Riparian Systems Floodplain and Riparian

2% (25,824 Acres)

Great Plains Riparian

This system is associated with perennial to intermittent or ephemeral streams throughout the northwestern Great Plains. In Montana, it occurs along smaller tributaries of the Yellowstone and Missouri rivers, as well as tributaries to the large floodplain rivers that feed them (e.g. the Milk, Marias, Musselshell, Powder, Clark's Fork Yellowstone, Tongue, etc). In areas adjacent to the mountain ranges of central and southeastern Montana, and near the Rocky Mountain Front, it grades into Rocky Mountain Lower Montane-Foothill Riparian Woodland and Shrubland systems. This system is found on alluvial soils in highly variable landscape settings, from confined, deep cut ravines to wide, braided streambeds. Channel migration occurs in less-confined areas, but within a more narrow range than would occur in broad, alluvial floodplains. Typically, the rivers are wadeable by mid-summer.

The primary inputs of water to these systems include groundwater discharge, overland flow, and subsurface interflow from the adjacent upland. Flooding is the key ecosystem process, creating suitable sites for seed dispersal and seedling establishment, and controlling vegetation succession. Communities within this system range from riparian forests and shrublands to tallgrass wet meadows and gravel/sand flats. Dominant species are similar to those found in the Great Plains Floodplain System. In the western part of the system's range in Montana, the dominant overstory species is black cottonwood (*Populus balsamifera ssp. trichocarpa*) with narrowleaf cottonwood (*Populus angustifolia*) and Plains cottonwood (*Populus deltoides*) occurring as co-dominants in the riparian/floodplain interface near the mountains. Further east, narrowleaf cottonwood and Plains cottonwood become dominant. In wetter systems, the understory is typically willow (*Salix spp.*) and redosier dogwood (*Cornus stolonifera*) with graminoids such as western wheatgrass (*Pascopyrum smithii*) and forbs like American licorice (*Glycyrrhiza lepidota*). In areas where the channel is incised, the understory may be dominated by big sagebrush (*Artemisia tridentata*) or silver sagebrush (*Artemisia cana*). Like floodplain systems, riparian systems are often subjected to overgrazing and/or agriculture and can be heavily degraded, with salt cedar (*Tamarix ramosissima*) and Russian olive (*Eleagnus angustifolia*) replacing native woody vegetation and regrowth. Groundwater depletion and lack of fire have resulted in additional species changes.



Grassland Systems Montane Grassland

2% (23,759 Acres)

Rocky Mountain Subalpine-Montane Mesic Meadow

This system is restricted to sites from lower montane to subalpine elevations where finely textured soils, snow deposition, or windswept conditions limit tree establishment. Many occurrences are small patches, and are often found in mosaics within woodlands, dense shrublands, or just below alpine communities. Elevations range from 600 to 2,011 meters (2,000-6,600 feet) in the northern Rocky Mountains and up to 2,286- 2,682 meters (7,500-8,800 feet) in the mountains of southwestern Montana. This system occurs on gentle to moderate-gradient slopes and in relatively moist habitats. Soils are typically seasonally moist to saturated in the spring, but dry out later in the growing season. At montane elevations, soils are usually clays or silt loams, and some occurrences may have inclusions of hydric soils in low, depressional areas. At subalpine elevations, soils are derived a variety of parent materials, and are usually rocky or gravelly with good aeration and drainage, but with a well developed organic layer. Some occurrences are more heavily dominated by grasses, while others are more dominated by forbs. Common grasses include tufted hairgrass (*Deschampsia caespitosa*), showy oniongrass (*Melica spectabilis*), mountain brome (*Bromus carinatus*), blue wildrye (*Elymus glaucus*), awned sedge (*Carex atherodes*), and small wing sedge (*Carex microptera*). Forb dominated meadows usually comprise a wide species diversity which differs from montane to subalpine elevations. Shrubs such as shrubby cinquefoil (*Dasiphora fruticosa ssp. floribunda*) and snowberry (*Symphoricarpos* species) are occasional but not abundant. This system differs from the Rocky Mountain Alpine Montane Wet Meadow system in that it soils dry out by mid-summer.

Additional Limited Land Cover

- 1% (17,305 Acres) ■ [Rocky Mountain Subalpine-Upper Montane Grassland](#)
- 1% (17,279 Acres) ■ [Big Sagebrush Steppe](#)
- 1% (12,057 Acres) ■ [Rocky Mountain Ponderosa Pine Woodland and Savanna](#)
- 1% (11,933 Acres) ■ [Other Roads](#)
- 1% (10,882 Acres) ■ [Northern Rocky Mountain Lower Montane Riparian Woodland and Shrubland](#)
- 1% (10,522 Acres) ■ [Great Plains Shrubland](#)
- 1% (10,425 Acres) ■ [Rocky Mountain Montane-Foothill Deciduous Shrubland](#)
- 1% (10,051 Acres) ■ [Rocky Mountain Subalpine Mesic Spruce-Fir Forest and Woodland](#)
- 1% (7,346 Acres) ■ [Insect-Killed Forest](#)
- 1% (6,927 Acres) ■ [Rocky Mountain Subalpine Deciduous Shrubland](#)
- 1% (6,214 Acres) ■ [Rocky Mountain Foothill Limber Pine - Juniper Woodland](#)
- 1% (6,067 Acres) ■ [Aspen Forest and Woodland](#)
- <1% (4,974 Acres) ■ [Rocky Mountain Subalpine Woodland and Parkland](#)
- <1% (4,036 Acres) ■ [Rocky Mountain Dry-Mesic Montane Mixed Conifer Forest](#)
- <1% (3,784 Acres) ■ [Great Plains Floodplain](#)
- <1% (3,125 Acres) ■ [Great Plains Ponderosa Pine Woodland and Savanna](#)
- <1% (3,064 Acres) ■ [Great Plains Badlands](#)
- <1% (2,636 Acres) ■ [Harvested forest-grass regeneration](#)
- <1% (2,315 Acres) ■ [Recently burned forest](#)

<1% (2,090 Acres) ■ [Major Roads](#)

<1% (2,069 Acres) ■ [Harvested forest-tree regeneration](#)

<1% (1,942 Acres) ■ [Great Plains Wooded Draw and Ravine](#)

<1% (1,755 Acres) ■ [Rocky Mountain Lower Montane-Foothill Riparian Woodland and Shrubland](#)

<1% (1,494 Acres) ■ [Railroad](#)

<1% (1,417 Acres) ■ [Harvested forest-shrub regeneration](#)

<1% (1,315 Acres) ■ [Low Intensity Residential](#)

<1% (1,280 Acres) ■ [Mountain Mahogany Woodland and Shrubland](#)

<1% (1,226 Acres) ■ [Post-Fire Recovery](#)

<1% (1,106 Acres) ■ [Greasewood Flat](#)

<1% (1,048 Acres) ■ [Rocky Mountain Cliff, Canyon and Massive Bedrock](#)

<1% (893 Acres) ■ [Rocky Mountain Foothill Woodland-Steppe Transition](#)

<1% (866 Acres) ■ [Open Water](#)

<1% (679 Acres) ■ [Great Plains Sand Prairie](#)

<1% (664 Acres) ■ [Emergent Marsh](#)

<1% (625 Acres) ■ [Alpine-Montane Wet Meadow](#)

<1% (606 Acres) ■ [Developed, Open Space](#)

<1% (484 Acres) ■ [Rocky Mountain Poor Site Lodgepole Pine Forest](#)

<1% (298 Acres) ■ [Aspen and Mixed Conifer Forest](#)

<1% (176 Acres) ■ [Great Plains Closed Depressional Wetland](#)

<1% (164 Acres) ■ [Commercial / Industrial](#)

<1% (136 Acres) ■ [Great Plains Saline Depression Wetland](#)

<1% (135 Acres) ■ [Rocky Mountain Subalpine-Montane Riparian Shrubland](#)

<1% (126 Acres) ■ [Great Plains Cliff and Outcrop](#)

<1% (113 Acres) ■ [High Intensity Residential](#)

<1% (105 Acres) ■ [Low Sagebrush Shrubland](#)

<1% (77 Acres) ■ [Alpine Bedrock and Scree](#)

<1% (51 Acres) ■ [Burned Sagebrush](#)

<1% (6 Acres) ■ [Wind Turbine](#)

<1% (5 Acres) ■ [Rocky Mountain Conifer Swamp](#)

<1% (5 Acres) ■ [Great Plains Open Freshwater Depression Wetland](#)

<1% (2 Acres) ■ [Introduced Riparian and Wetland Vegetation](#)

<1% (1 Acres) ■ [Recently burned shrubland](#)

Introduction to Land Cover

Land Use/Land Cover is one of 15 [Montana Spatial Data Infrastructure](#) framework layers considered vital for making statewide maps of Montana and understanding its geography. The layer records all Montana natural vegetation, land cover and land use, classified from satellite and aerial imagery, mapped at a scale of 1:100000, and interpreted with supporting ground-level data. The baseline map is adapted from the Northwest ReGAP (NWGAP) project land cover classification, which used 30m resolution multi-spectral Landsat imagery acquired between 1999 and 2001. Vegetation classes were drawn from the Ecological System Classification developed by NatureServe (Comer et al. 2003). The land cover classes were developed by Anderson et al. (1976). The NWGAP effort encompasses 12 map zones. Montana overlaps seven of these zones. The two NWGAP teams responsible for the initial land cover mapping effort in Montana were Sanborn and NWGAP at the University of Idaho. Both Sanborn and NWGAP employed a similar modeling approach in which Classification and Regression Tree (CART) models were applied to Landsat ETM+ scenes. The Spatial Analysis Lab within the Montana Natural Heritage Program was responsible for developing a seamless Montana land cover map with a consistent statewide legend from these two separate products. Additionally, the Montana land cover layer incorporates several other land cover and land use products (e.g., MSDI Structures and Transportation themes and the Montana Department of Revenue Final Land Unit classification) and reclassifications based on plot-level data and the latest NAIP imagery to improve accuracy and enhance the usability of the theme. Updates are done as partner support and funding allow, or when other MSDI datasets can be incorporated. Recent updates include fire perimeters and agricultural land use (annually), energy developments such as wind, oil and gas installations (2014), roads, structures and other impervious surfaces (various years): and local updates/improvements to specific ecological systems (e.g., central Montana grassland and sagebrush ecosystems). Current and previous versions of the Land Use/Land Cover layer with full metadata are available for download at the Montana State Library's [Geographic Information Clearinghouse](#).

Within the report area you have requested, land cover is summarized by acres of Level 1, Level 2, and Level 3 Ecological Systems.

Literature Cited

- Anderson, J.R. E.E. Hardy, J.T. Roach, and R.E. Witmer. 1976. A land use and land cover classification system for use with remote sensor data. U.S. Geological Survey Professional Paper 964.
- Comer, P., D. Faber-Langendoen, R. Evans, S. Gawler, C. Josse, G. Kittel, S. Menard, M. Pyne, M. Reid, K. Schulz, K. Snow, and J. Teague. 2003. Ecological systems of the United States: A working classification of U.S. terrestrial systems. NatureServe, Arlington, VA.