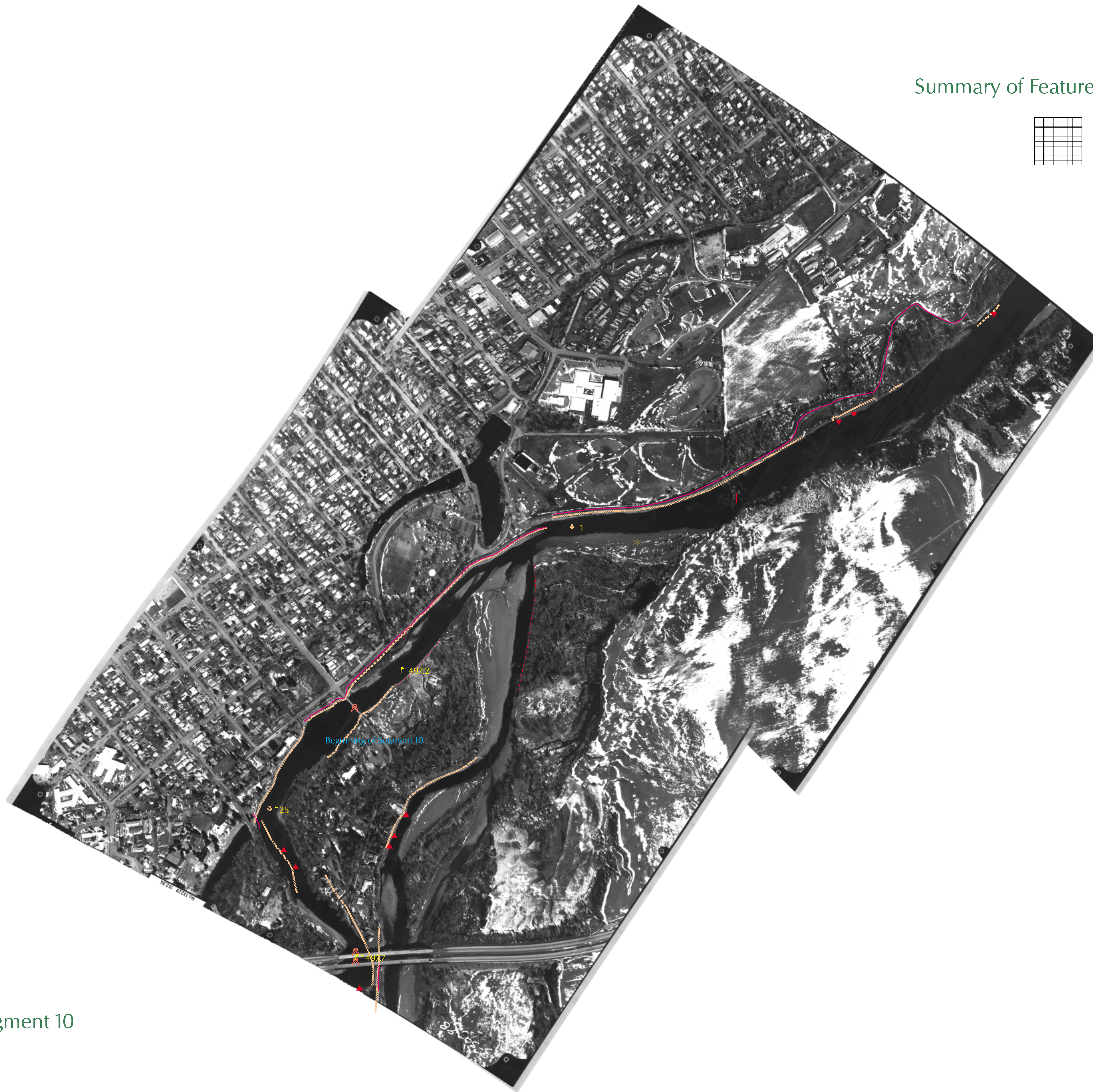
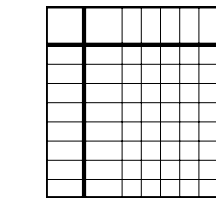


# YELLOWSTONE RIVER PHYSICAL FEATURES INVENTORY

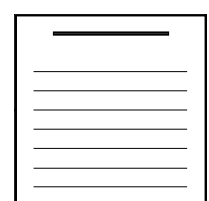
## River Segment 10

Beginning of Seg

### Summary of Features Information for Segment 10

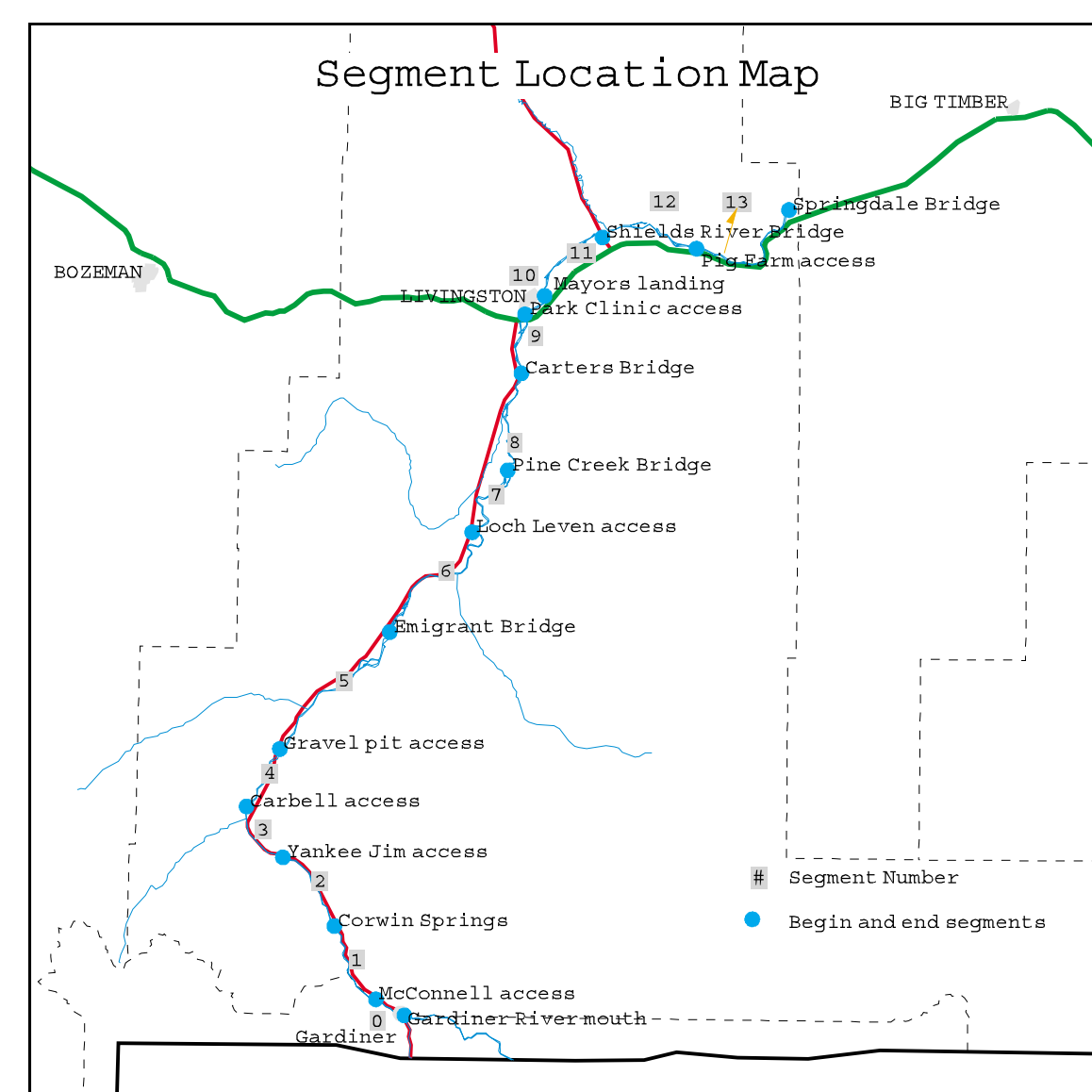
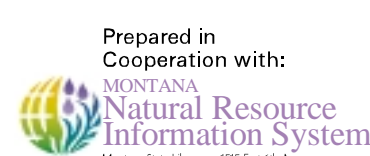


### Description of Segment 10



The Natural Resource Conservation Service (NRCS) in Montana is a Federal agency working in partnership with the American people to help protect and sustain natural resources on America's private lands.

This information was prepared for the Upper Yellowstone River Task Force and the Park County Conservation District by U.S.D.A. Natural Resources Conservation Service and Montana Department of Environmental Quality in association with other partners.



Physical features shown here are based on an inventory of the Upper Yellowstone River conducted April 22 and 23, 1998.

#### SYMBOL LEGEND

LINE FEATURES	POINT FEATURES
Dike	Bedrock Sill
Bank Rock Riprap	Irrigation Headgate
Eroding Bank	Photopoint
	Rock Barb
	Rock Jetty
	Large Woody Debris
	Active Bridge
	Boat Ramp
	DNRC River Mile Marker

