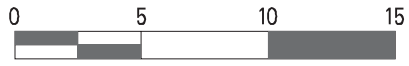
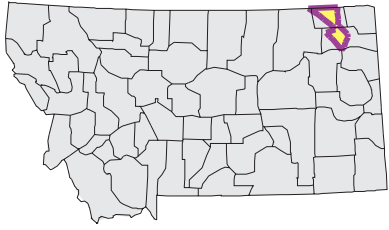
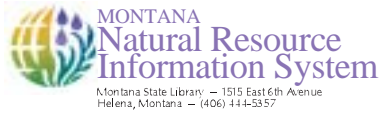


POPLAR Watershed

Ownership



Mapscale 1: 480000 Scale in miles:



Date created: October 24, 2003

Map Request: 04MSL0001 - 10060003 - STEW

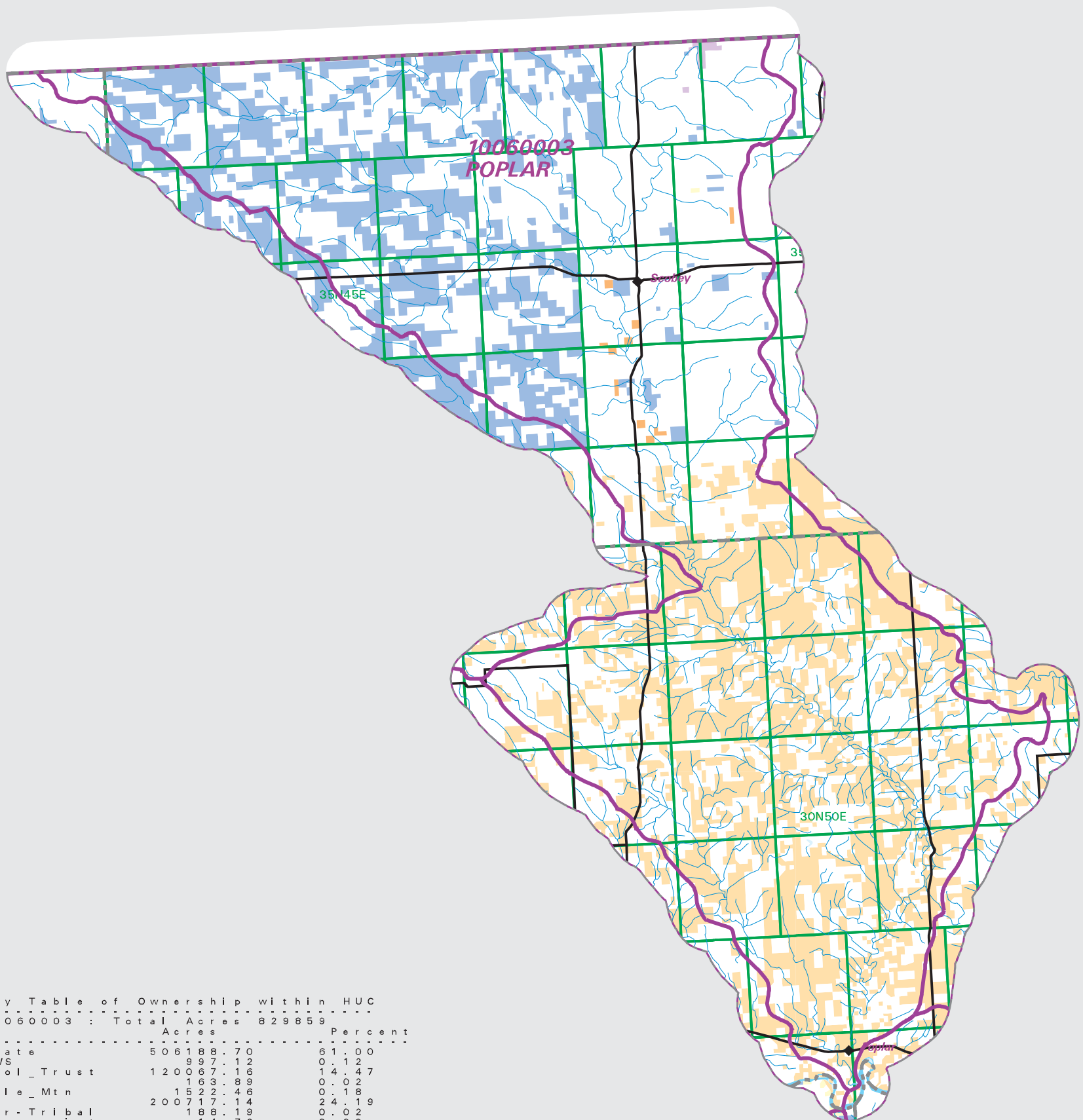
- County Border
- Highway
- Public Land Survey System Townships
- Fourth Code Watersheds
- Bureau of Land Management
- US Fish and Wildlife Service
- State School Trust
- Bureau of Indian Affairs
- Turtle Mountain Tribes
- Private
- Water unknown owner

Notes:

Not all legend items may appear on this map. Features shown on this map do not imply public access to any lands. The land status data displayed on this map may not be complete and may contain errors in boundary locations and/or coding. The Natural Resource Information System makes no representations or warranties whatsoever with respect to the accuracy or completeness of the data contained in these maps and assumes no responsibility for the suitability of these data for a particular purpose. The Natural Resource Information System will not be liable for any damages incurred as a result of errors displayed here. The ownership boundaries displayed on this map are not based on survey data and are not a substitute for property surveys.

Sources:

This map displays land status information contained in a statewide data layer that was developed from many sources and continues to be corrected and updated. Much of the public lands information was originally digitized by the Bureau of Land Management (BLM) from 1:100,000 scale BLM Surface Management Status maps. Additional information, corrections and updates (especially for tribal lands and private lands) were added by the University of Montana, Wildlife Spatial Analysis Unit, during 1995-1998, and since, periodically by The Montana Natural Heritage Program.



Summary Table of Ownership within HUC			
HUC	10060003	Total Acres	829859
Owner	Acres		Percent
Private	506188.70		61.00
USFWS	997.12		0.12
School - Trust	120067.16		14.47
BLM	163.89		0.02
Turtle - Mtn	1522.46		0.18
BLA	200717.14		24.19
Water - Tribal	188.19		0.02
Water - navigt	14.72		0.00
Acres =	829859.38		