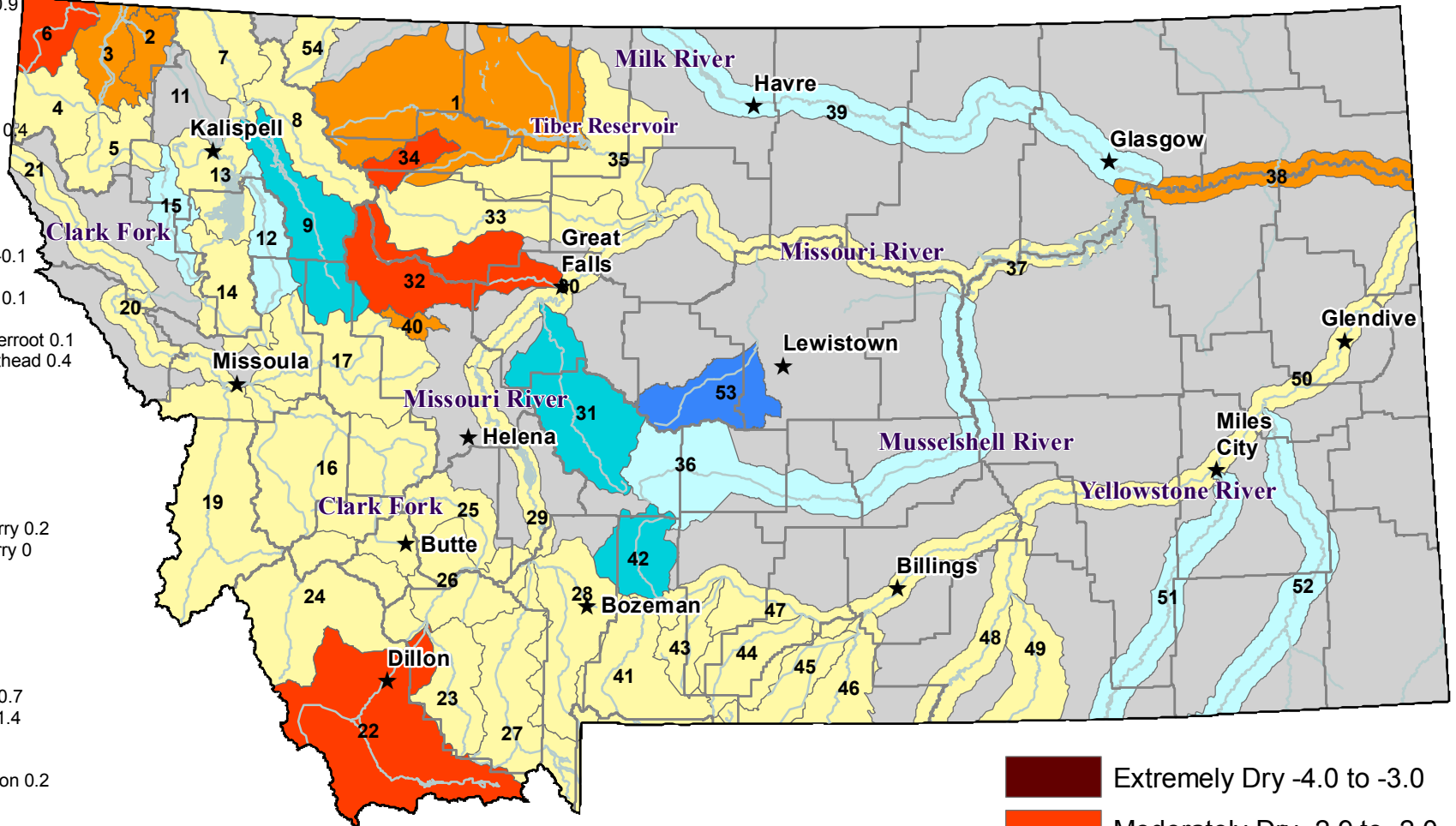


RIVER INDEX & SWSI VALUES

- 1 Marias above Tiber Reservoir -1.2
- 2 Tobacco -1.3
- 3 Kootenai Ft. Steele to Libby Dam -1
- 4 Kootenai below Libby Dam 0.9
- 5 Fisher -0.7
- 6 Yaak -2.2
- 7 North Fk. Flathead -0.7
- 8 Middle Fk. Flathead -0.1
- 9 South Fk. Flathead 2.7
- 10 Flathead at Columbia Falls 0.4
- 11 Stillwater/Whitefish Rivers
- 12 Swan 1.2
- 13 Flathead at Polson 0.5
- 14 Mission Valley -0.1
- 15 Little Bitterroot 1.8
- 16 Clark Fork above Milltown -0.1
- 17 Blackfoot 0
- 18 Clark Fork above Missoula 0.1
- 19 Bitterroot 0
- 20 Clark Fork River below Bitterroot 0.1
- 21 Clark Fork River below Flathead 0.4
- 22 Beaverhead -2
- 23 Ruby -0.7
- 24 Big Hole -0.1
- 25 Boulder (Jefferson) -0.4
- 26 Jefferson 0.7
- 27 Madison -0.5
- 28 Gallatin -0.4
- 29 Missouri above Canyon Ferry 0.2
- 30 Missouri below Canyon Ferry 0
- 31 Smith 2.8
- 32 Sun -2.2
- 33 Teton -0.2
- 34 Birch/Dupuyer Creeks -2.5
- 35 Marias -0.3
- 36 Musselshell 1.4
- 37 Missouri above Fort Peck -0.7
- 38 Missouri below Fort Peck -1.4
- 39 Milk 1.4
- 40 Dearborn near Craig -1.4
- 41 Yellowstone above Livingston 0.2
- 42 Shields 2.2
- 43 Boulder (Yellowstone) 0.3
- 44 Stillwater -0.8
- 45 Rock/Red Lodge Creeks -0.4
- 46 Clarks Fork Yellowstone 0.5
- 47 Yellowstone above Bighorn River 0.1
- 48 Bighorn below Bighorn Lake 0.2
- 49 Little Bighorn -0.3
- 50 Yellowstone below Bighorn 0.2
- 51 Tongue 1.7
- 52 Powder 1.7
- 53 Upper Judith 3.8
- 54 Saint Mary -0.5

Surface Water Supply Index (SWSI) Values



January 10, 2014

- Extremely Dry -4.0 to -3.0
- Moderately Dry -2.9 to -2.0
- Slightly Dry -1.9 to -1.0
- Near Average -0.9 to 0.9
- Slightly Wet 1.0 to 1.9
- Moderately Wet 2.0 to 2.9
- Extremely Wet 3.0 to 4.0
- SWSI Not Applicable



NOTE: Data used to generate this map are PROVISIONAL and SUBJECT TO CHANGE.