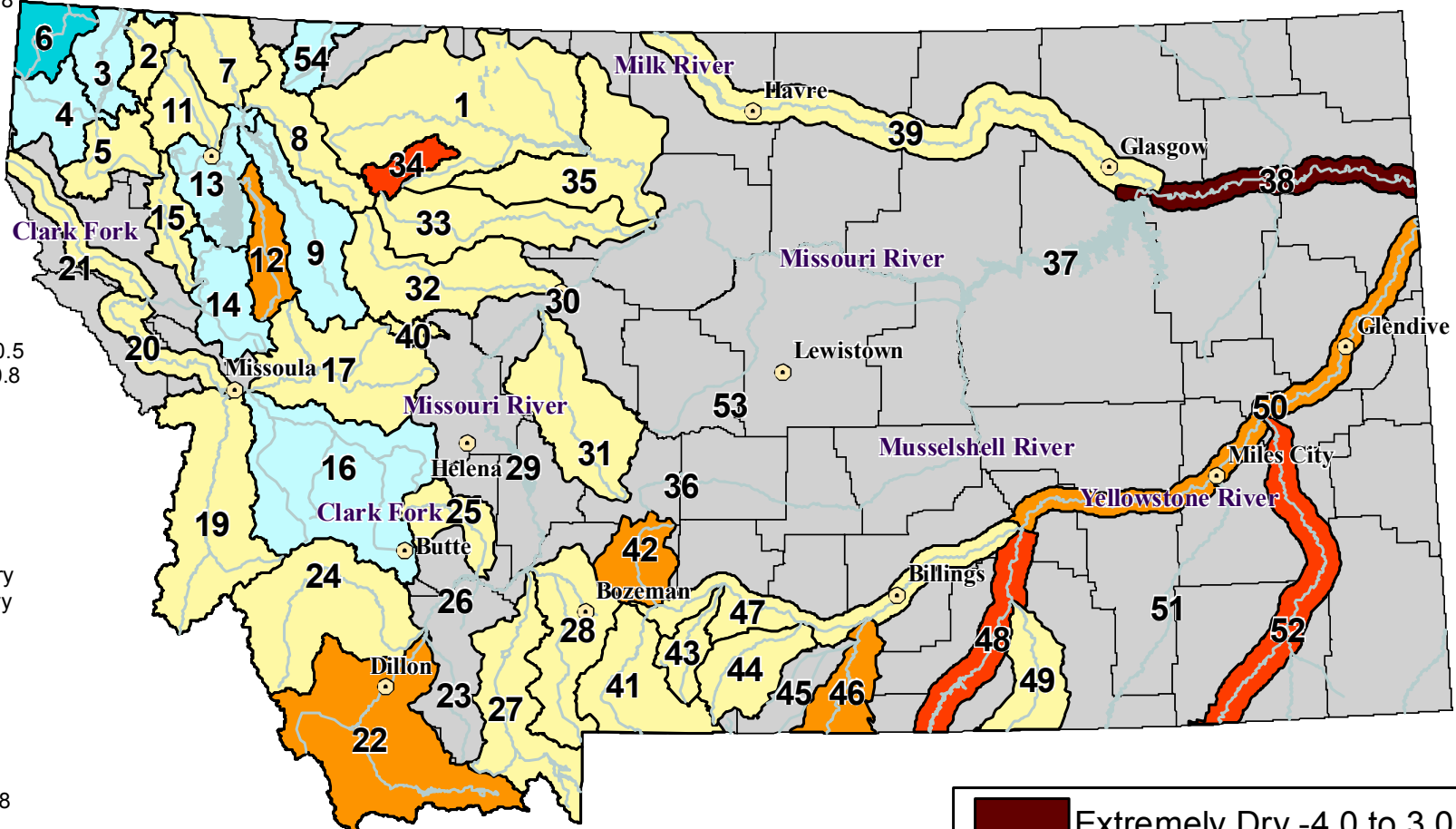


RIVER INDEX & SWSI VALUES

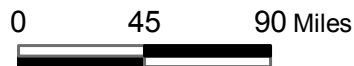
Surface Water Supply Index (SWSI) Values

UNITED STATES DEPARTMENT OF AGRICULTURE NATURAL RESOURCES CONSERVATION SERVICE

- 1 Marias above Tiber Reservoir -0.4
- 2 Tobacco -0.1
- 3 Kootenai Ft. Steele to Libby Dam 1.5
- 4 Kootenai below Libby Dam 1.8
- 5 Fisher 0.5
- 6 Yaak 2.7
- 7 North FK. Flathead 0.6
- 8 Middle FK. Flathead 0.4
- 9 South FK. Flathead 1.8
- 11 Stillwater/Whitefish 0.7
- 12 Swan -1.4
- 13 Flathead at Polson 1
- 14 Mission Valley 1.4
- 15 Little Bitterroot 0.2
- 16 Clark Fork above Milltown 1
- 17 Blackfoot 0.2
- 19 Bitterroot 0.6
- 20 Clark Fork below Bitterroot 0.5
- 21 Clark Fork below Flathead 0.8
- 22 Beaverhead -1.1
- 23 Ruby
- 24 Big Hole -0.1
- 25 Boulder (Jefferson) 0.4
- 26 Jefferson
- 27 Madison -0.5
- 28 Gallatin -0.7
- 29 Missouri above Canyon Ferry
- 30 Missouri below Canyon Ferry
- 31 Smith 0.9
- 32 Sun 0.3
- 33 Teton 0.4
- 34 Birch/Dupuyer Creeks -2.6
- 35 Marias 0.9
- 36 Musselshell
- 37 Missouri above Fort Peck
- 38 Missouri below Fort Peck -3.8
- 39 Milk 0.1
- 40 Dearborn near Craig -0.1
- 41 Yellowstone above Livingston 0.4
- 42 Shields -1.2
- 43 Boulder (Yellowstone) 0.2
- 44 Stillwater -0.8
- 45 Rock/Red Lodge Creeks
- 46 Clarks Fork -1.2
- 47 Yellowstone above Bighorn -0.1
- 48 Bighorn below Bighorn Lake -2.1
- 49 Little Bighorn -0.3
- 50 Yellowstone below Bighorn -1
- 51 Tongue
- 52 Powder -2
- 53 Upper Judith River
- 54 Saint Mary River 1



Current as of
Jan 1, 2007



NOTE: Data used to generate this map are PROVISIONAL and SUBJECT TO CHANGE.



<http://www.mt.nrcs.usda.gov>

