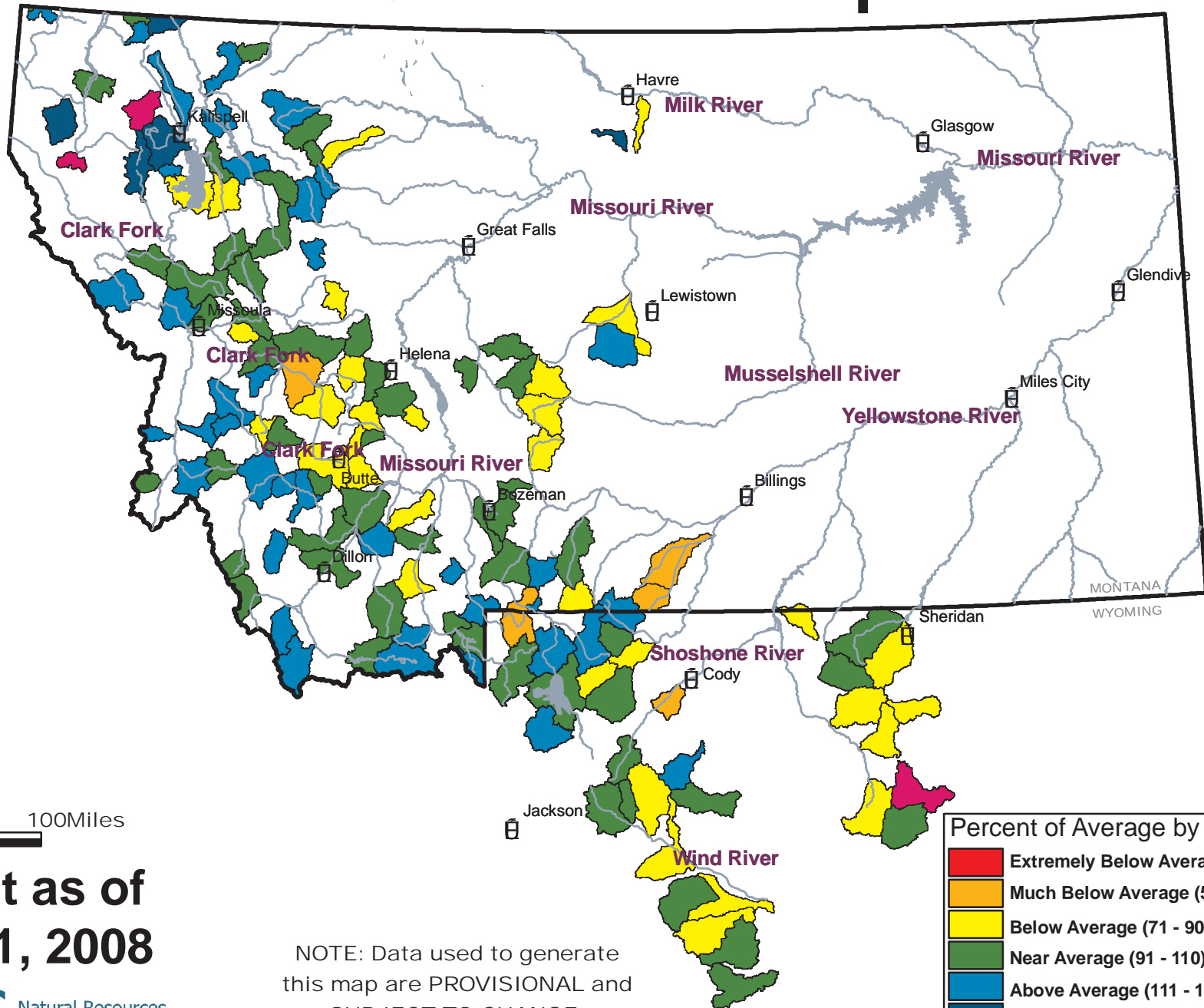


# Mountain Snow Water Equivalent



0 50 100 Miles

**Current as of  
March 1, 2008**

NOTE: Data used to generate this map are PROVISIONAL and SUBJECT TO CHANGE.

Percent of Average by Sub-Basin	
<span style="color: red;">■</span>	Extremely Below Average (Below 51)
<span style="color: orange;">■</span>	Much Below Average (51 - 70)
<span style="color: yellow;">■</span>	Below Average (71 - 90)
<span style="color: green;">■</span>	Near Average (91 - 110)
<span style="color: blue;">■</span>	Above Average (111 - 130)
<span style="color: darkblue;">■</span>	Much Above Average (131 - 150)
<span style="color: pink;">■</span>	Extremely Above Average (Over 150)