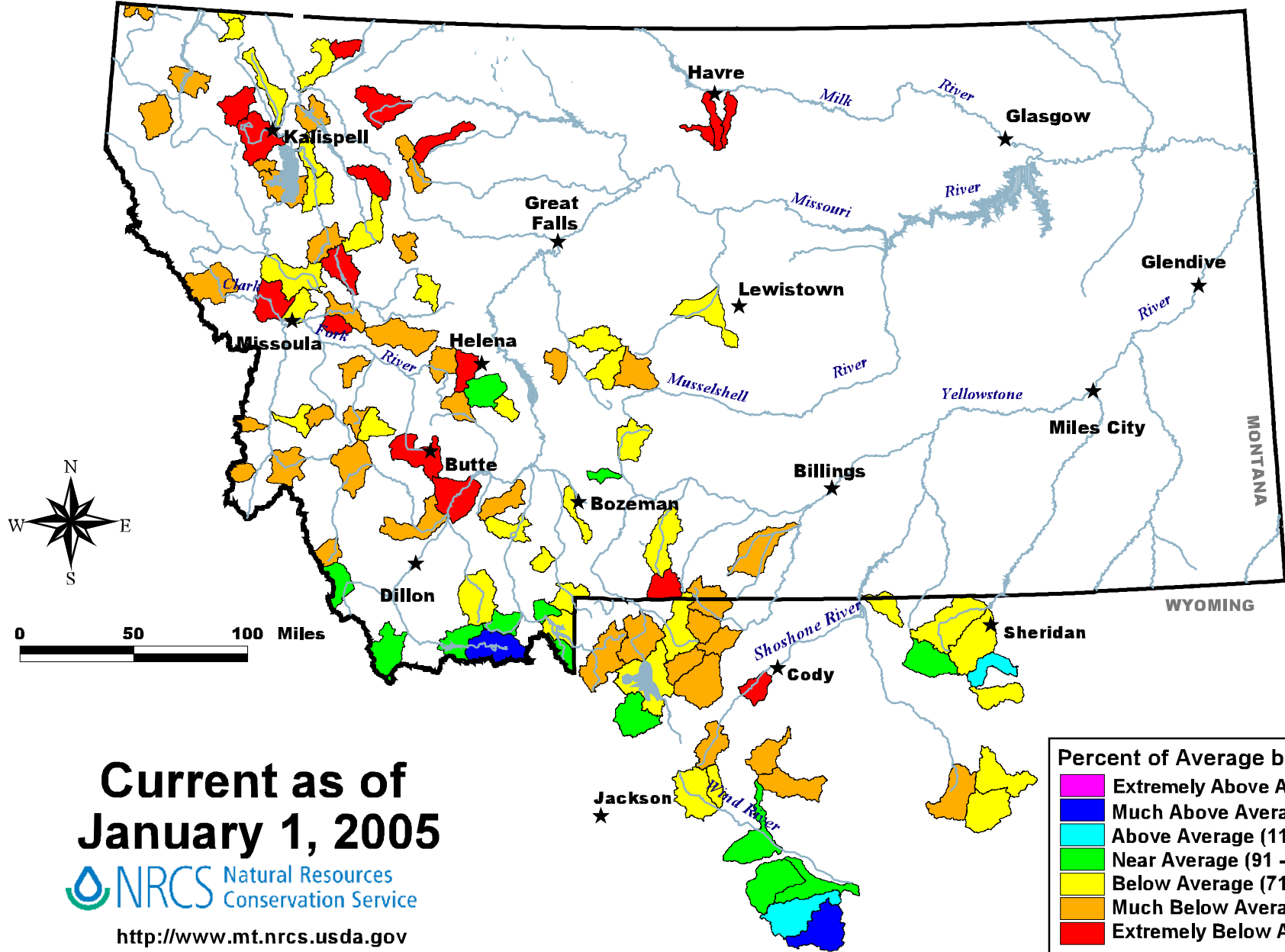


Mountain Snow Water Equivalent



Current as of
January 1, 2005



<http://www.mt.nrcs.usda.gov>

Percent of Average by Sub-Basin

| |
|------------------------------------|
| Extremely Above Average (Over 150) |
| Much Above Average (131 - 150) |
| Above Average (111 - 130) |
| Near Average (91 - 110) |
| Below Average (71 - 90) |
| Much Below Average (51 - 70) |
| Extremely Below Average (Below 51) |

NOTE: Data used to generate this map are **PROVISIONAL** and **SUBJECT TO CHANGE.**