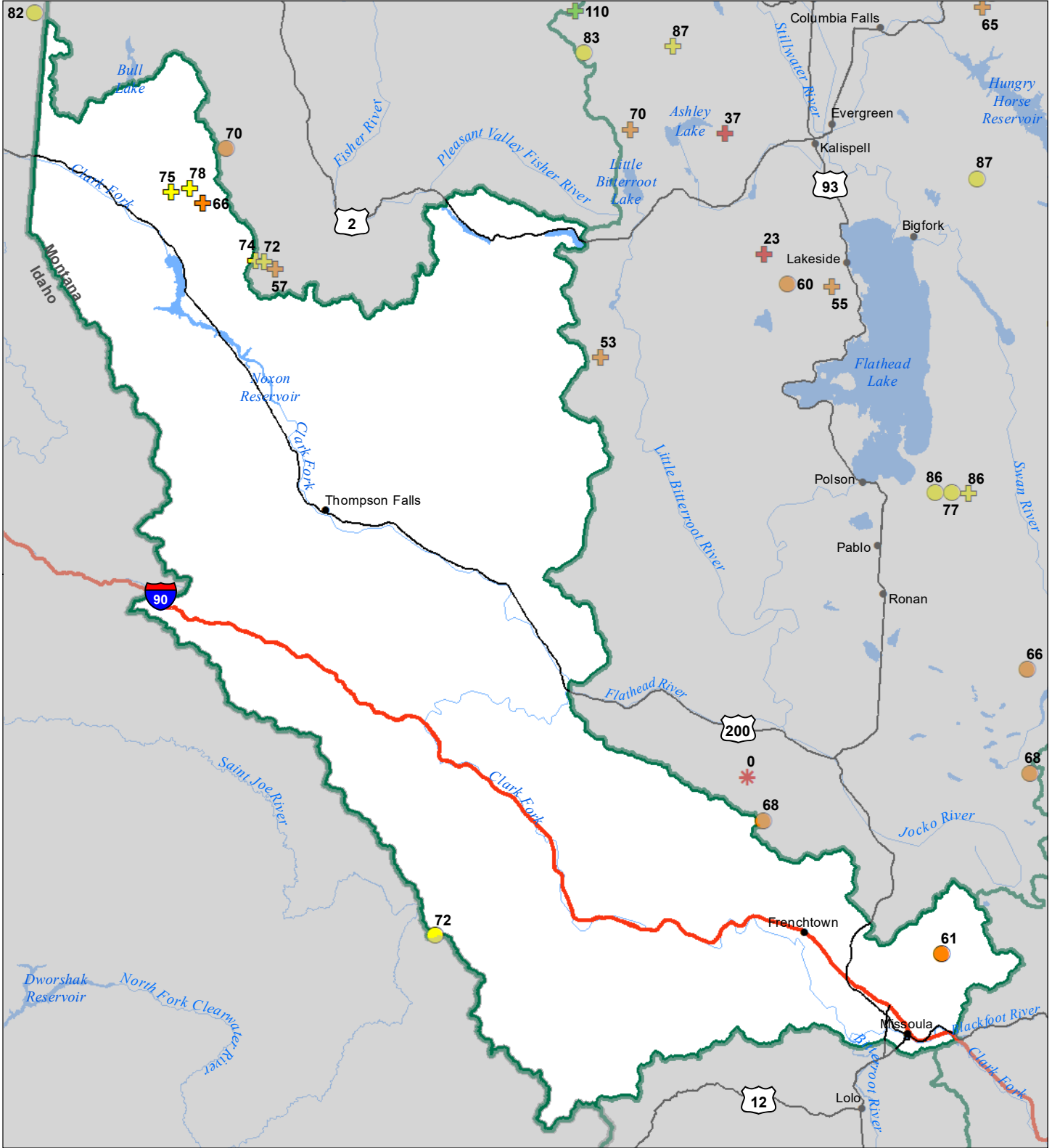


# Lower Clark Fork River Basin Snow Water Equivalent Percentage of Normal April 1, 2024



### Snow Water Equivalent Percent of Normal

**SNOTEL**

- > 150%
- 131 - 150%
- 111 - 130%
- 91 - 110%
- 71 - 90%
- 51 - 70%
- 1 - 50%
- \* 0%

**Snowcourse**

- + > 150%
- + 131 - 150%
- + 111 - 130%
- + 91 - 110%
- + 71 - 90%
- + 51 - 70%
- + 1 - 50%
- \* 0%

