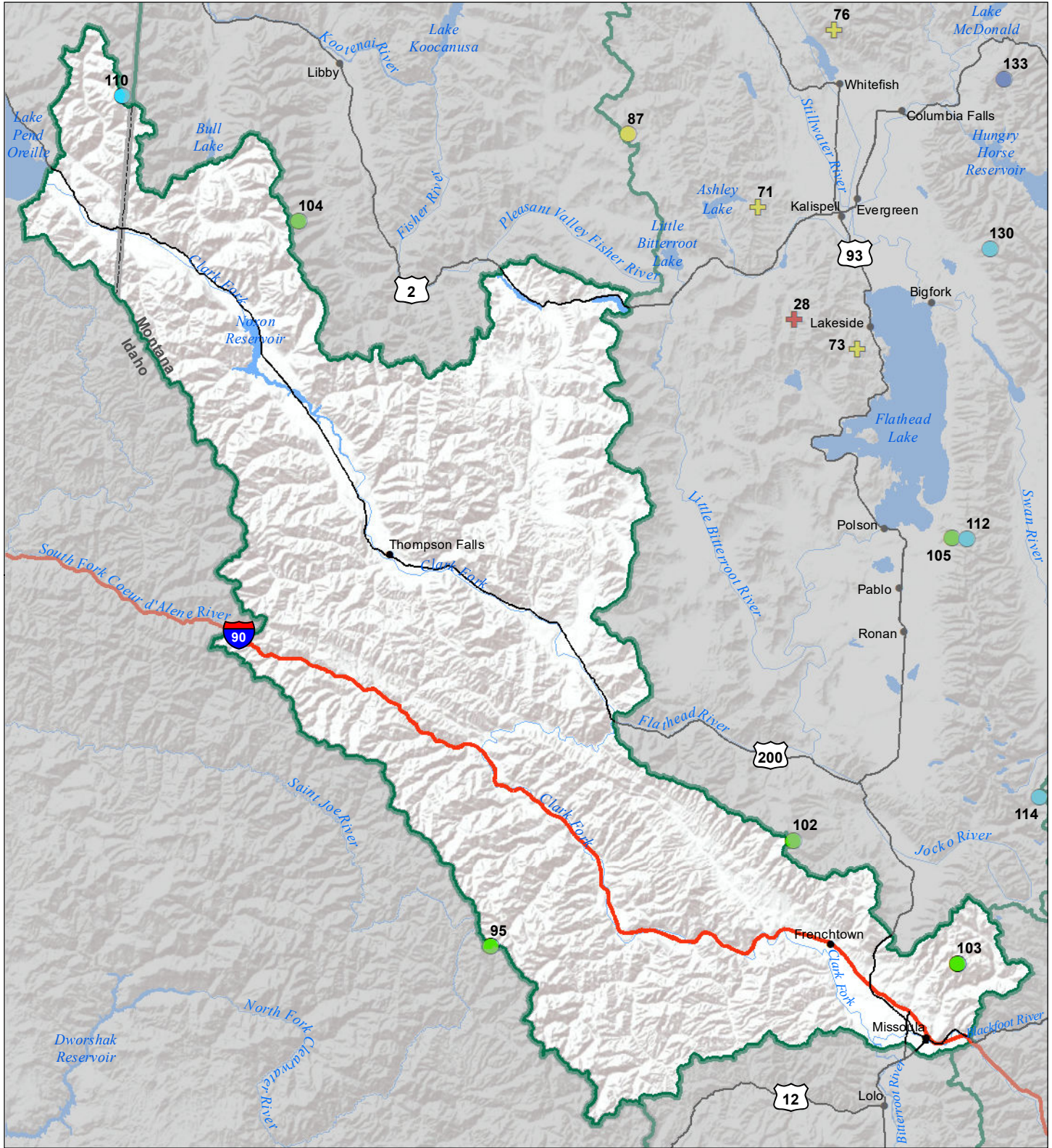


# Lower Clark Fork River Basin Snow Water Equivalent Percentage of Normal February 1, 2020



### Snow Water Equivalent Percent of Normal

**SNOTEL**

- > 150%
- 131 - 150%
- 111 - 130%
- 91 - 110%
- 71 - 90%
- 51 - 70%
- 1 - 50%
- \*

**Snowcourse**

- ⊕ > 150%
- ⊕ 131 - 150%
- ⊕ 111 - 130%
- ⊕ 91 - 110%
- ⊕ 71 - 90%
- ⊕ 51 - 70%
- ⊕ 1 - 50%
- ⊕ \*

