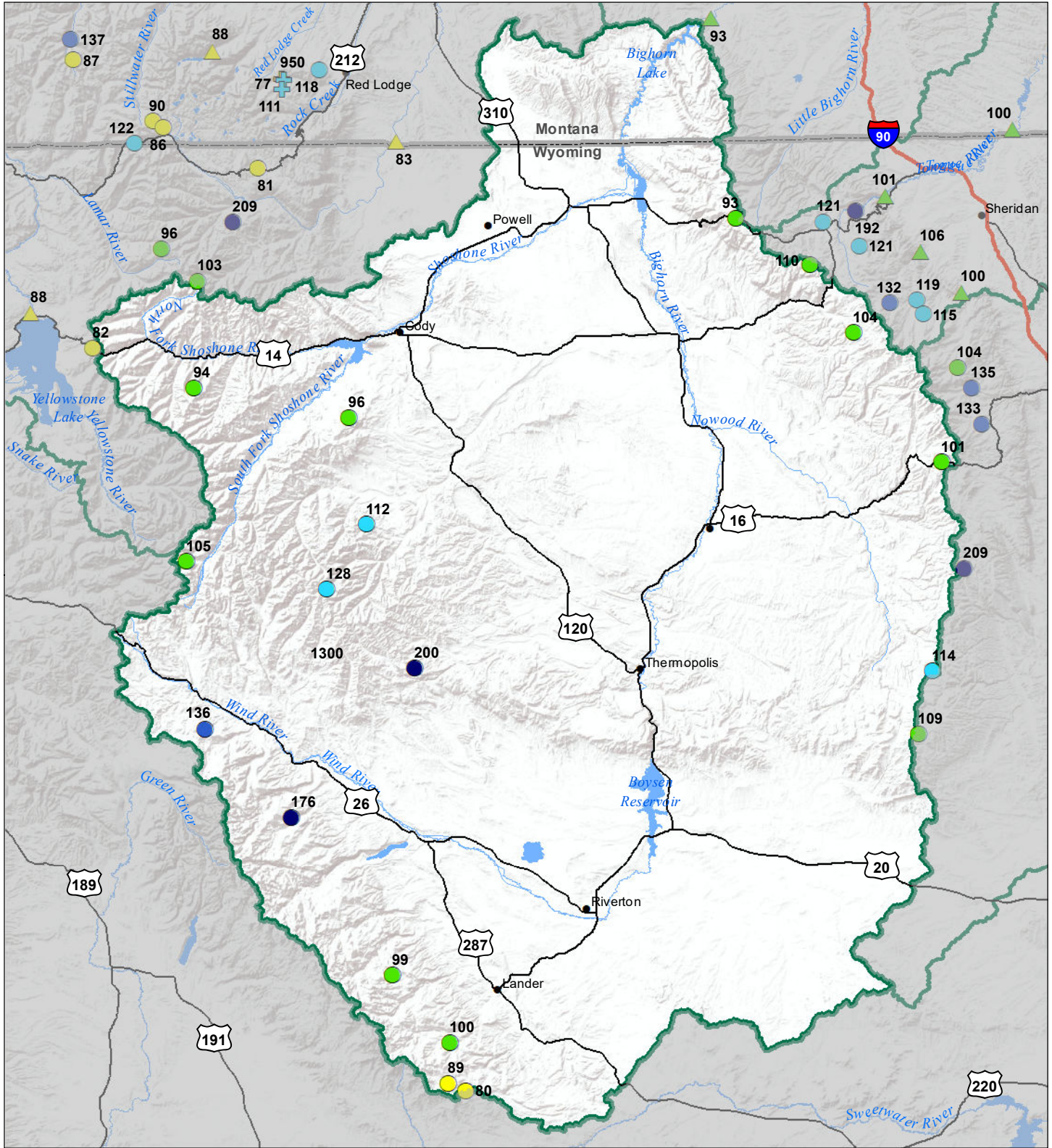


Bighorn River Basin

Streamflow Forecast, Snow Water Equivalent

Percentage of Normal

May 1, 2022



Snow Water Equivalent Percent of Normal

SNOTEL

- > 150%
- 131 - 150%
- 111 - 130%
- 91 - 110%
- 71 - 90%
- 51 - 70%
- 1 - 50%
- *

Snowcourse

- ✚ > 150%
- ✚ 131 - 150%
- ✚ 111 - 130%
- ✚ 91 - 110%
- ✚ 71 - 90%
- ✚ 51 - 70%
- ✚ 1 - 50%
- ✚ *

Streamflow Forecast Percent of Average Flows

- ▲ > 150%
- ▲ 131 - 150%
- ▲ 111 - 130%
- ▲ 91 - 110%
- ▲ 71 - 90%
- ▲ 51 - 70%
- ▲ 1 - 50%

