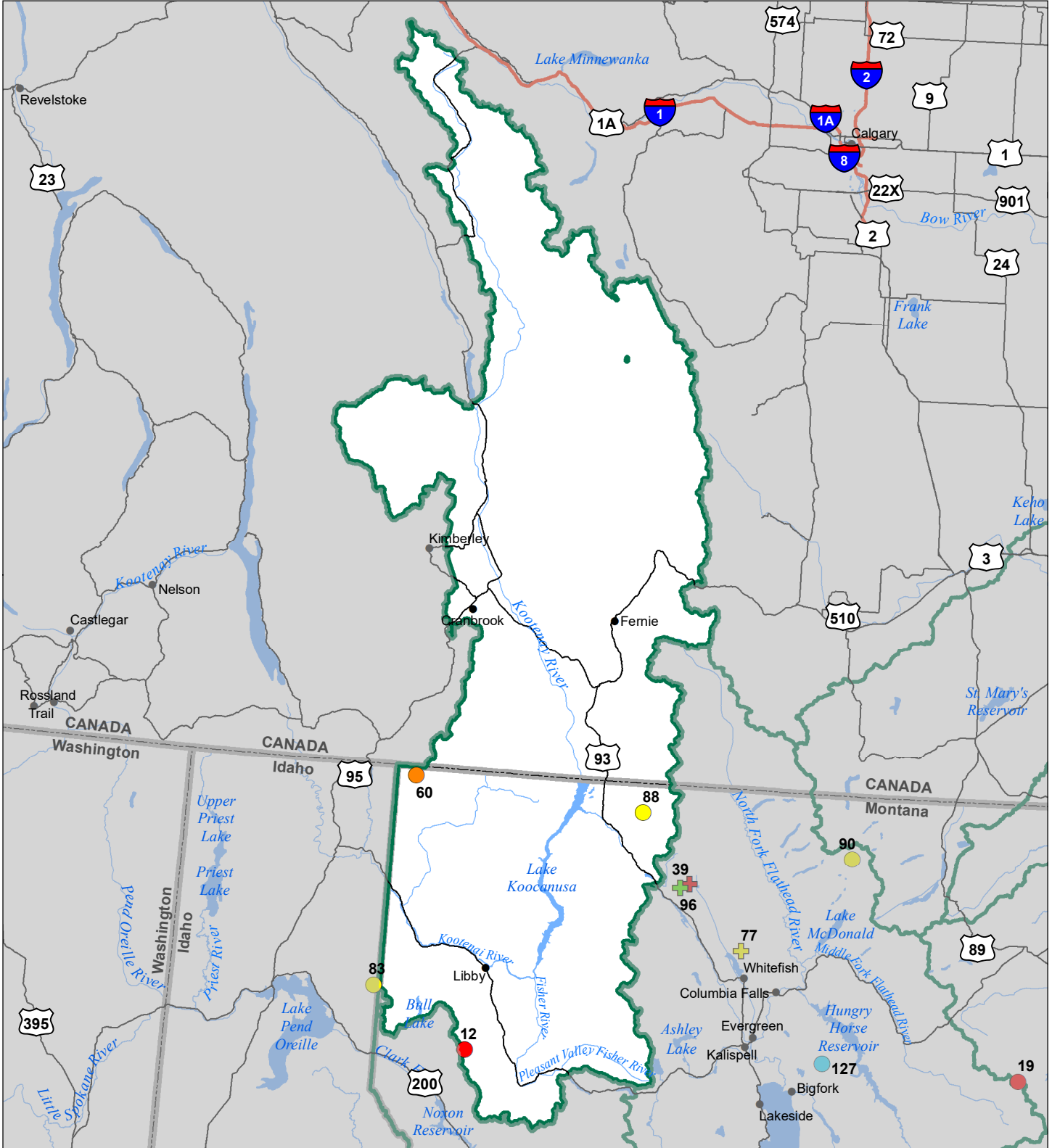


# Kootenai River Basin Snow Water Equivalent Percentage of Normal June 1, 2024



## Snow Water Equivalent Percent of Normal

### SNOTEL

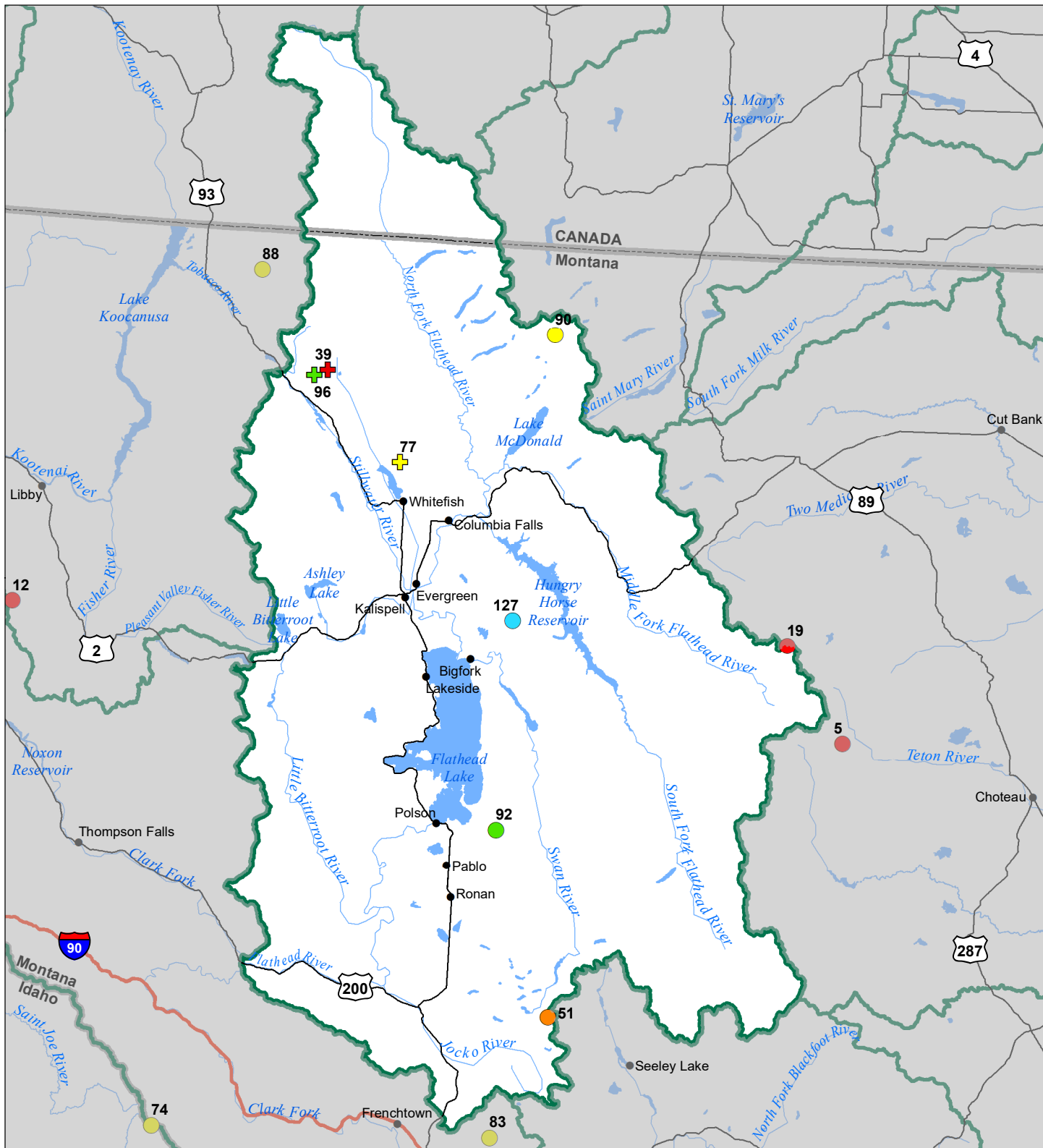
- > 150%
- 131 - 150%
- 111 - 130%
- 91 - 110%
- 71 - 90%
- 51 - 70%
- 1 - 50%
- \* 0%

### Snowcourse

- ⊕ > 150%
- ⊕ 131 - 150%
- ⊕ 111 - 130%
- ⊕ 91 - 110%
- ⊕ 71 - 90%
- ⊕ 51 - 70%
- ⊕ 1 - 50%
- \* 0%



# Flathead River Basin Snow Water Equivalent Percentage of Normal June 1, 2024



### Snow Water Equivalent Percent of Normal

**SNOTEL**

- > 150%
- 131 - 150%
- 111 - 130%
- 91 - 110%

- 71 - 90%
- 51 - 70%
- 1 - 50%
- \*

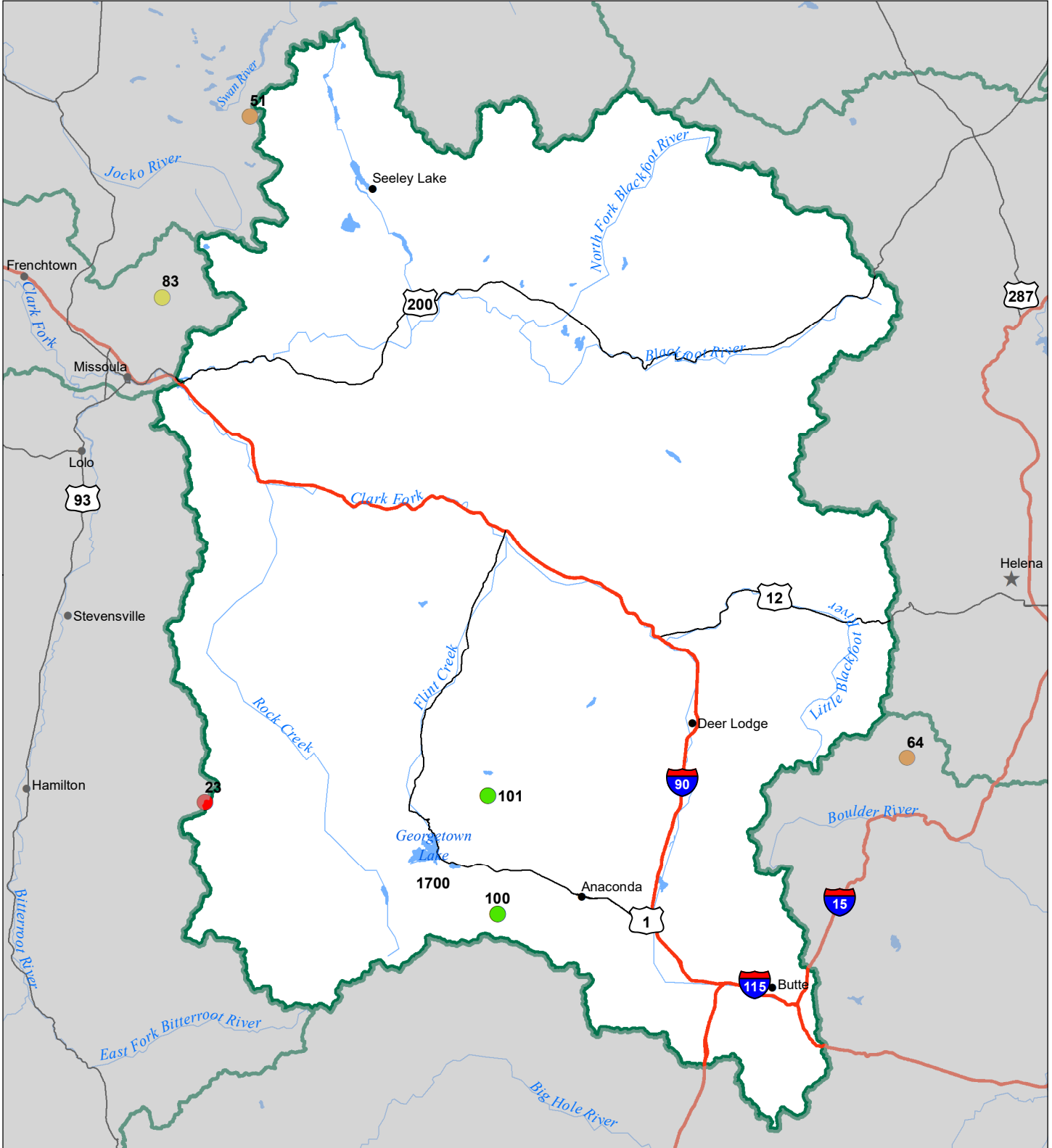
**Snowcourse**

- ⊕ > 150%
- ⊕ 131 - 150%
- ⊕ 111 - 130%
- ⊕ 91 - 110%

- ⊕ 71 - 90%
- ⊕ 51 - 70%
- ⊕ 1 - 50%
- ⊕ \*



# Upper Clark Fork River Basin Snow Water Equivalent Percentage of Normal June 1, 2024



### Snow Water Equivalent Percent of Normal

**SNOTEL**

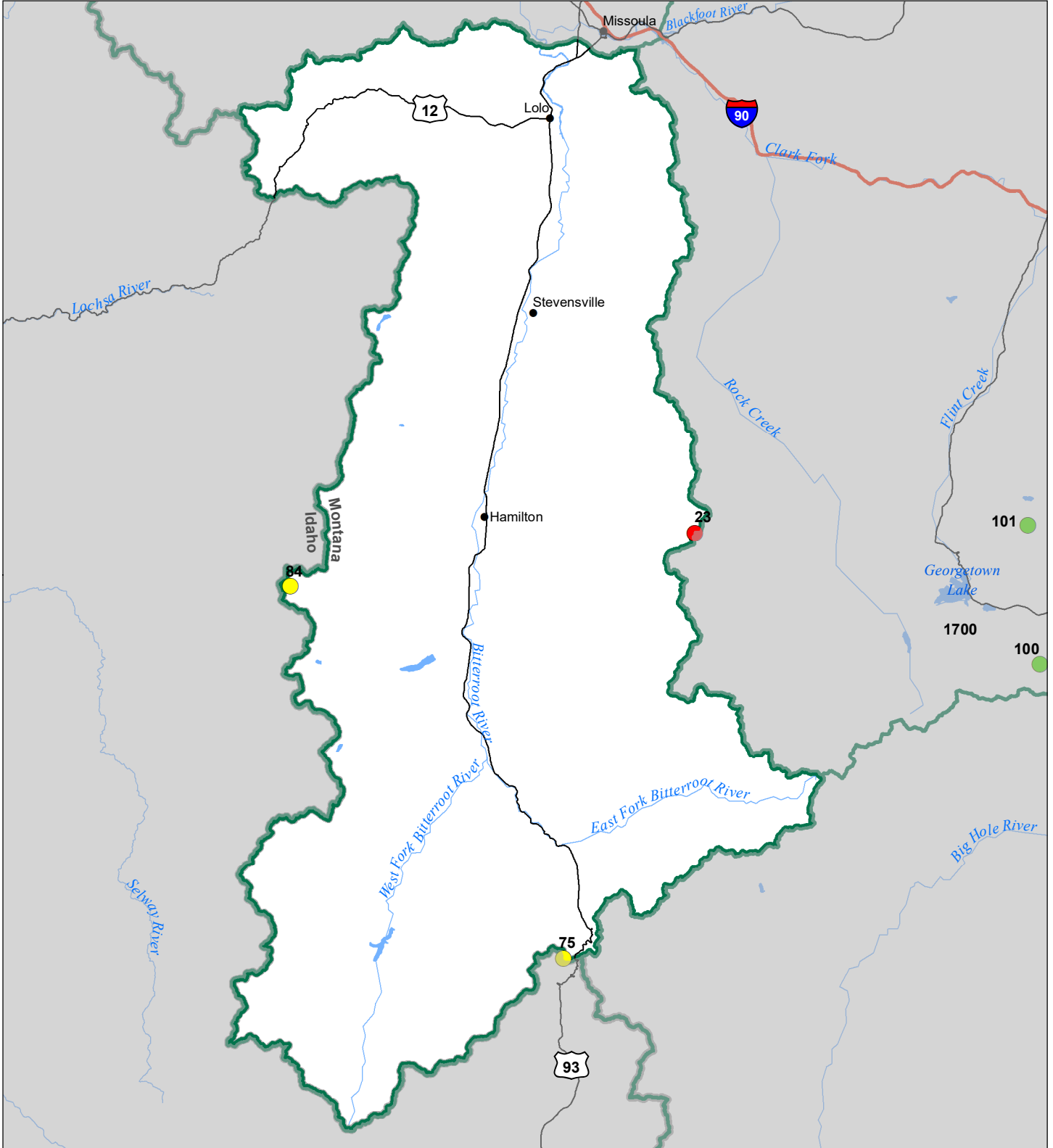
- > 150%
- 131 - 150%
- 111 - 130%
- 91 - 110%
- 71 - 90%
- 51 - 70%
- 1 - 50%
- \*

**Snowcourse**

- ⊕ > 150%
- ⊕ 131 - 150%
- ⊕ 111 - 130%
- ⊕ 91 - 110%
- ⊕ 71 - 90%
- ⊕ 51 - 70%
- ⊕ 1 - 50%
- ⊕ \*



# Bitterroot River Basin Snow Water Equivalent Percentage of Normal June 1, 2024



## Snow Water Equivalent Percent of Normal

### SNOTEL

- > 150%
- 131 - 150%
- 111 - 130%
- 91 - 110%

- 71 - 90%
- 51 - 70%
- 1 - 50%
- \* 0%

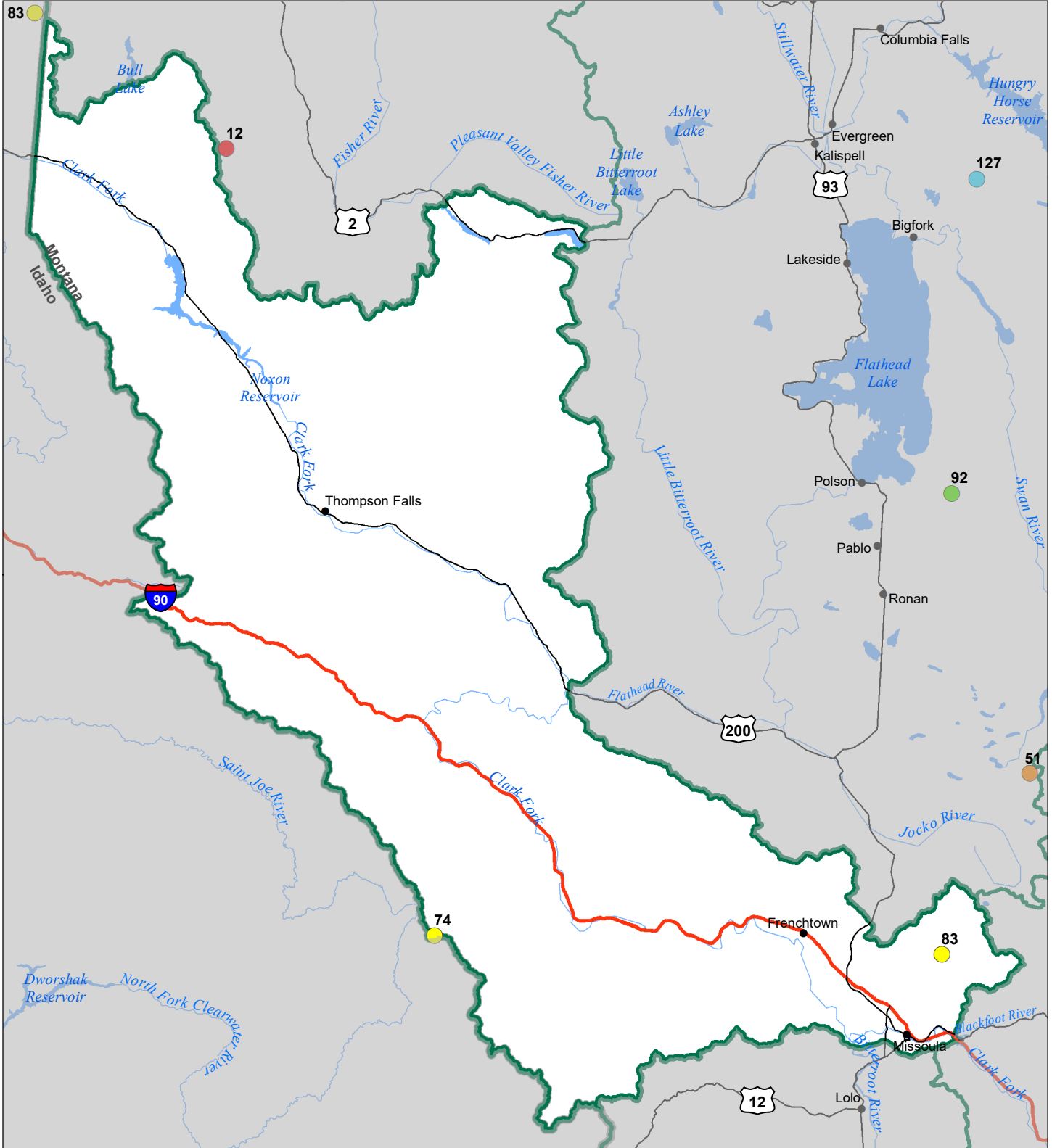
### Snowcourse

- ⊕ > 150%
- ⊕ 131 - 150%
- ⊕ 111 - 130%
- ⊕ 91 - 110%

- ⊕ 71 - 90%
- ⊕ 51 - 70%
- ⊕ 1 - 50%
- \* 0%



# Lower Clark Fork River Basin Snow Water Equivalent Percentage of Normal June 1, 2024



### Snow Water Equivalent Percent of Normal

**SNOTEL**

- > 150%
- 131 - 150%
- 111 - 130%
- 91 - 110%

- 71 - 90%
- 51 - 70%
- 1 - 50%
- \*

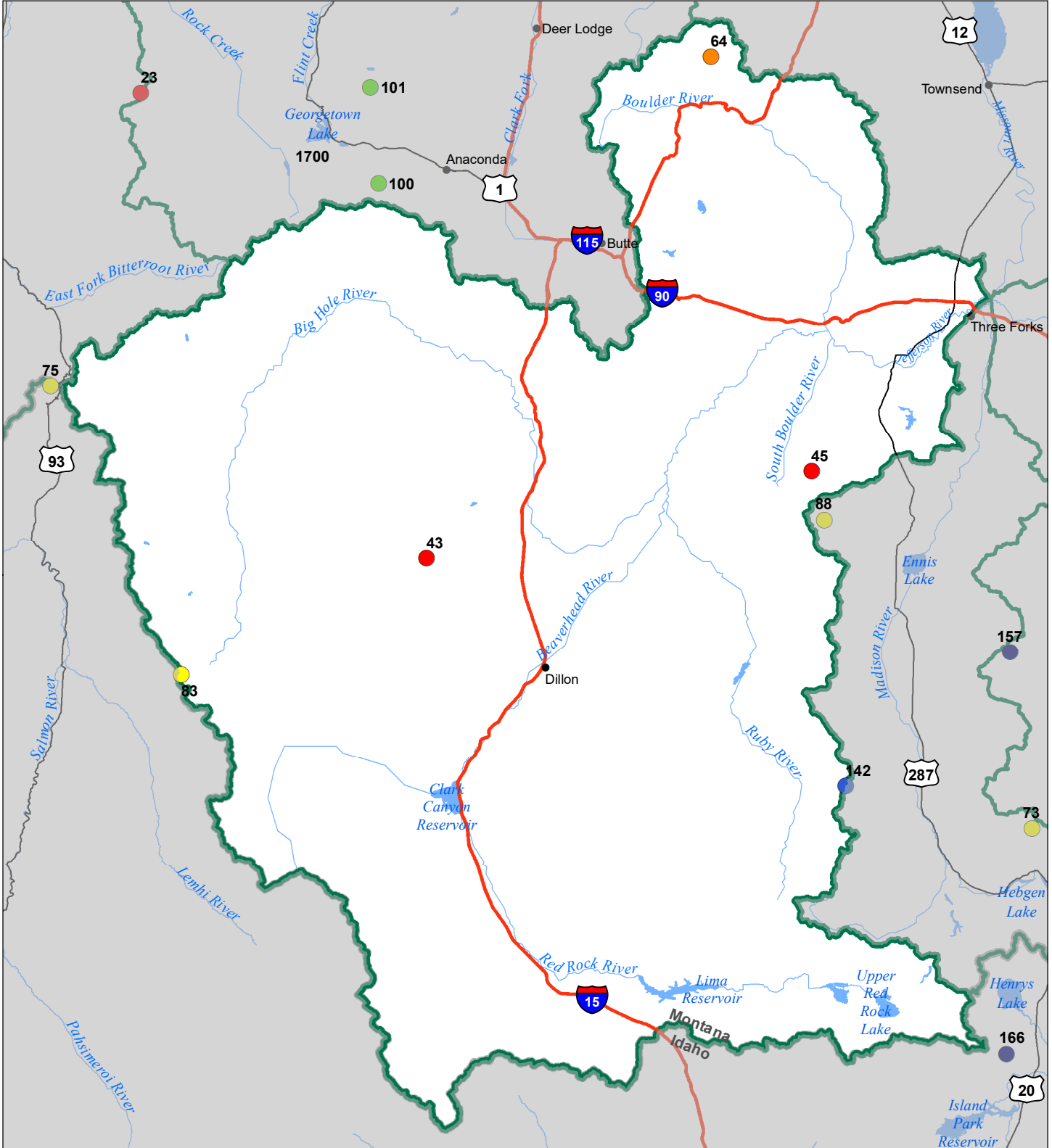
**Snowcourse**

- ⊕ > 150%
- ⊕ 131 - 150%
- ⊕ 111 - 130%
- ⊕ 91 - 110%

- ⊕ 71 - 90%
- ⊕ 51 - 70%
- ⊕ 1 - 50%
- ⊕ \*



# Jefferson River Basin Snow Water Equivalent Percentage of Normal June 1, 2024



### Snow Water Equivalent Percent of Normal

**SNOTEL**

- > 150%
- 131 - 150%
- 111 - 130%
- 91 - 110%
- 71 - 90%
- 51 - 70%
- 1 - 50%
- \* 0%

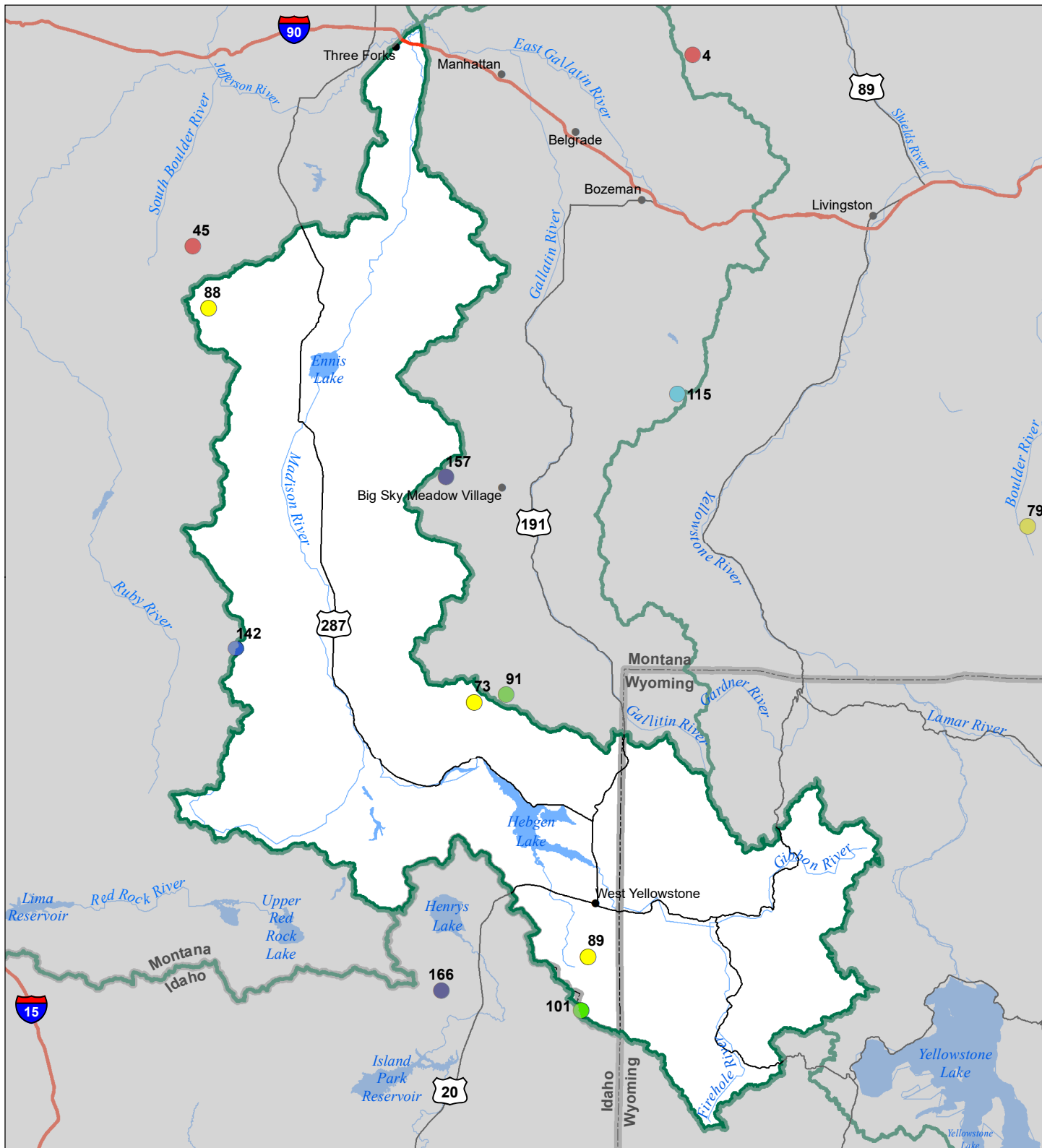
**Snowcourse**

- ⊕ > 150%
- ⊕ 131 - 150%
- ⊕ 111 - 130%
- ⊕ 91 - 110%
- ⊕ 71 - 90%
- ⊕ 51 - 70%
- ⊕ 1 - 50%
- \* 0%





# Madison River Basin Snow Water Equivalent Percentage of Normal June 1, 2024



## Snow Water Equivalent Percent of Normal

### SNOTEL

- > 150%
- 131 - 150%
- 111 - 130%
- 91 - 110%

- 71 - 90%
- 51 - 70%
- 1 - 50%
- \* 0%

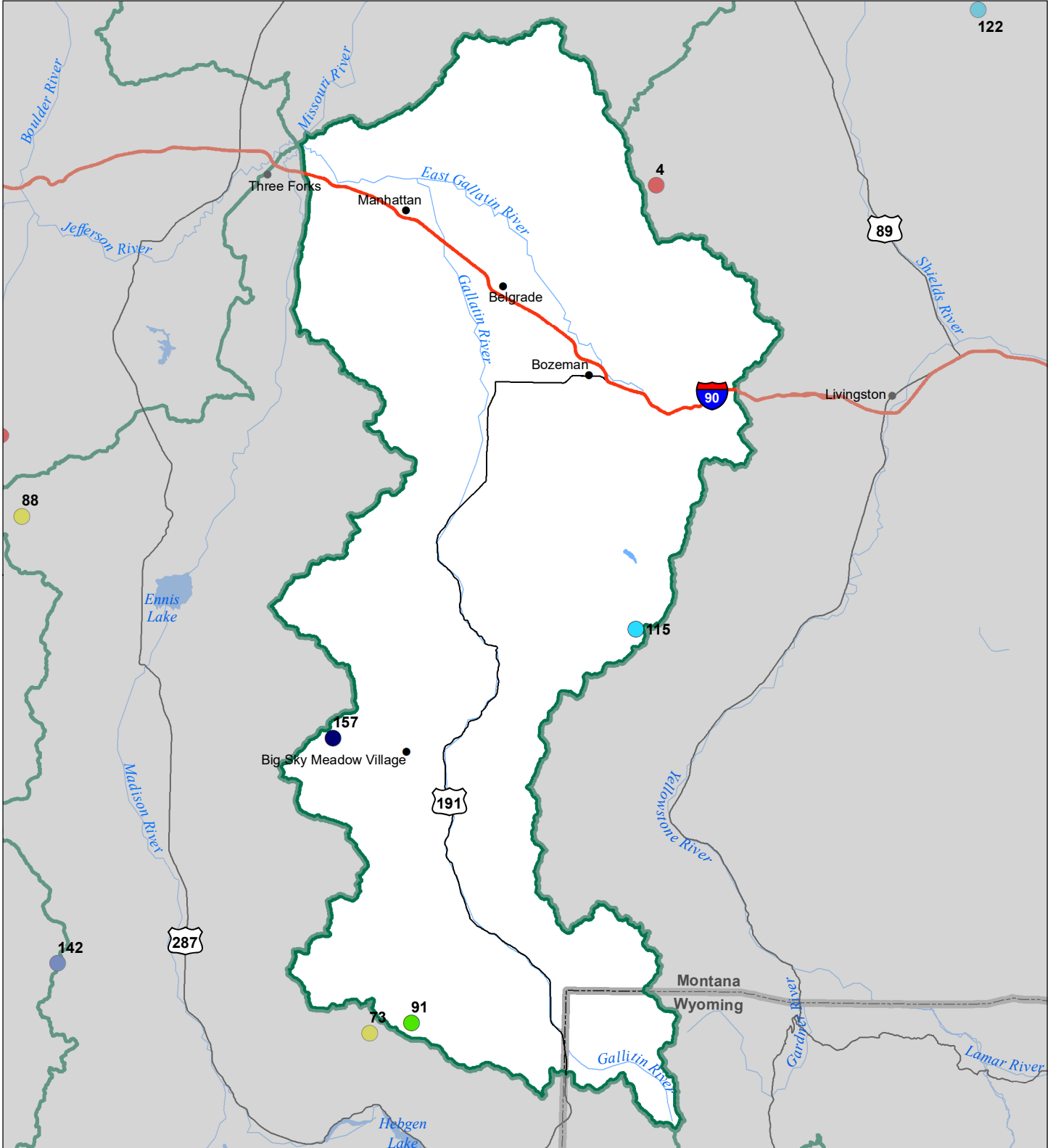
### Snowcourse

- + > 150%
- + 131 - 150%
- + 111 - 130%
- + 91 - 110%

- + 71 - 90%
- + 51 - 70%
- + 1 - 50%
- \* 0%



# Gallatin River Basin Snow Water Equivalent Percentage of Normal June 1, 2024



## Snow Water Equivalent Percent of Normal

### SNOTEL

- > 150%
- 131 - 150%
- 111 - 130%
- 91 - 110%

- 71 - 90%
- 51 - 70%
- 1 - 50%
- \*

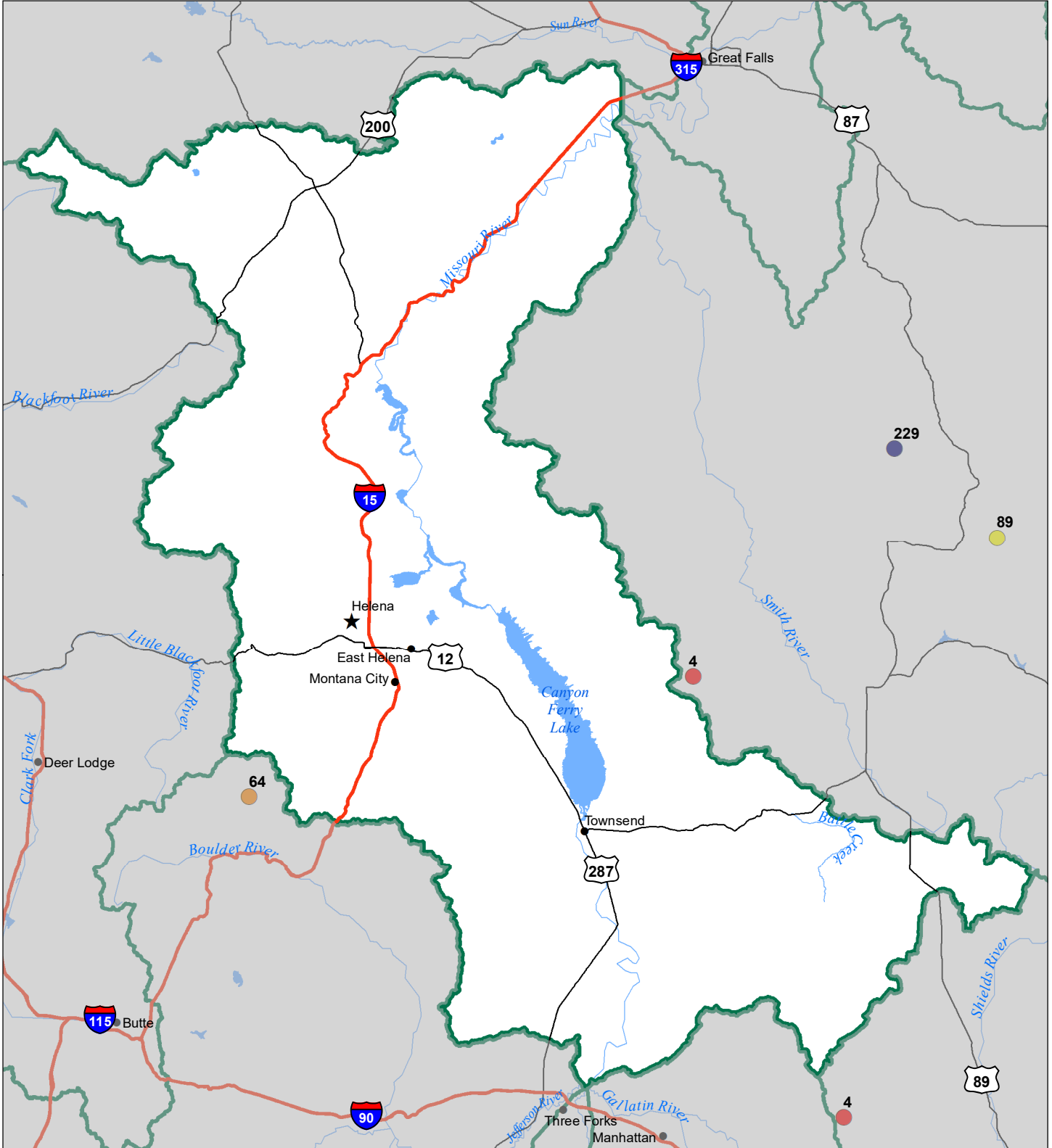
### Snowcourse

- ⊕ > 150%
- ⊕ 131 - 150%
- ⊕ 111 - 130%
- ⊕ 91 - 110%
- ⊕ 71 - 90%
- ⊕ 51 - 70%
- ⊕ 1 - 50%
- ⊕ \*





# Headwaters Mainstem River Basin Snow Water Equivalent Percentage of Normal June 1, 2024



### Snow Water Equivalent Percent of Normal

**SNOTEL**

- > 150%
- 131 - 150%
- 111 - 130%
- 91 - 110%

- 71 - 90%
- 51 - 70%
- 1 - 50%
- \* 0%

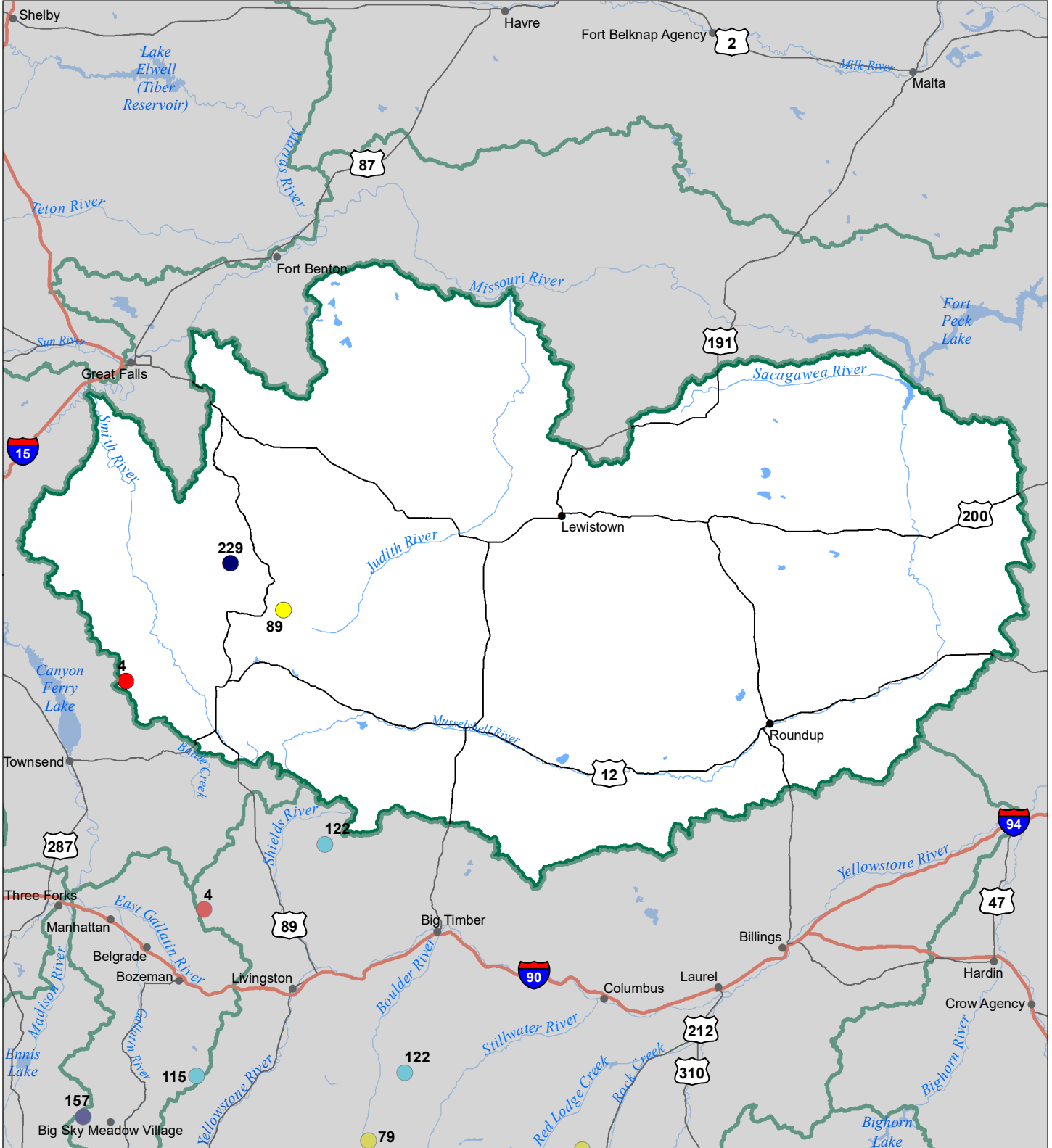
**Snowcourse**

- ⊕ > 150%
- ⊕ 131 - 150%
- ⊕ 111 - 130%
- ⊕ 91 - 110%

- ⊕ 71 - 90%
- ⊕ 51 - 70%
- ⊕ 1 - 50%
- \* 0%



# Smith-Judith-Musselshell River Basin Snow Water Equivalent Percentage of Normal June 1, 2024



### Snow Water Equivalent Percent of Normal

**SNOTEL**

- > 150%
- 131 - 150%
- 111 - 130%
- 91 - 110%

- 71 - 90%
- 51 - 70%
- 1 - 50%
- \*

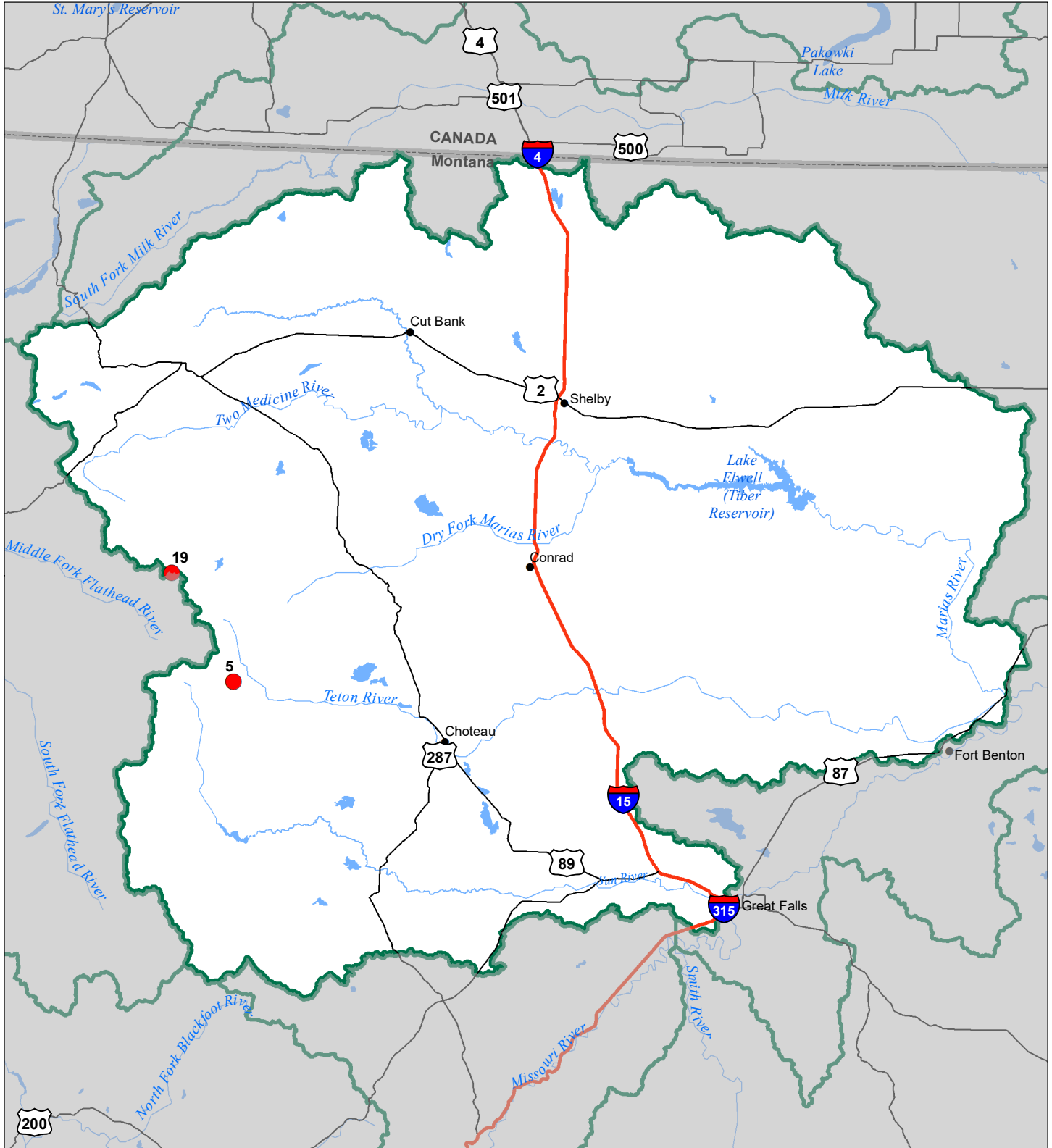
**Snowcourse**

- ⊕ > 150%
- ⊕ 131 - 150%
- ⊕ 111 - 130%
- ⊕ 91 - 110%

- ⊕ 71 - 90%
- ⊕ 51 - 70%
- ⊕ 1 - 50%
- ⊕ \*



# Sun-Teton-Marias River Basin Snow Water Equivalent Percentage of Normal June 1, 2024



### Snow Water Equivalent Percent of Normal

**SNOTEL**

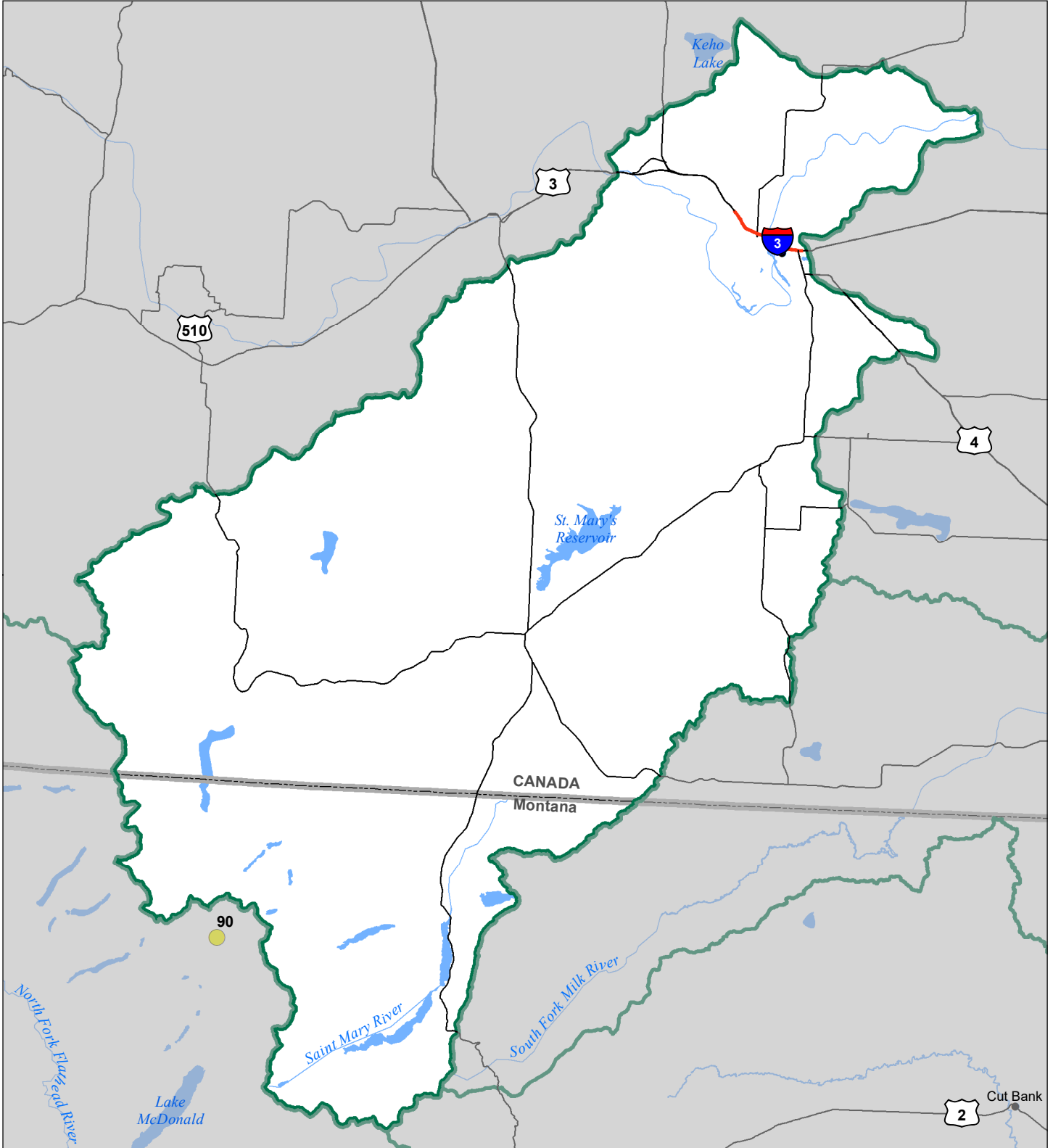
- > 150%
- 131 - 150%
- 111 - 130%
- 91 - 110%
- 71 - 90%
- 51 - 70%
- 1 - 50%
- \*

**Snowcourse**

- ⊕ > 150%
- ⊕ 131 - 150%
- ⊕ 111 - 130%
- ⊕ 91 - 110%
- ⊕ 71 - 90%
- ⊕ 51 - 70%
- ⊕ 1 - 50%
- ⊕ \*



# St Mary's River Basin Snow Water Equivalent Percentage of Normal June 1, 2024



### Snow Water Equivalent Percent of Normal

**SNOTEL**

- > 150%
- 131 - 150%
- 111 - 130%
- 91 - 110%

- 71 - 90%
- 51 - 70%
- 1 - 50%
- \*

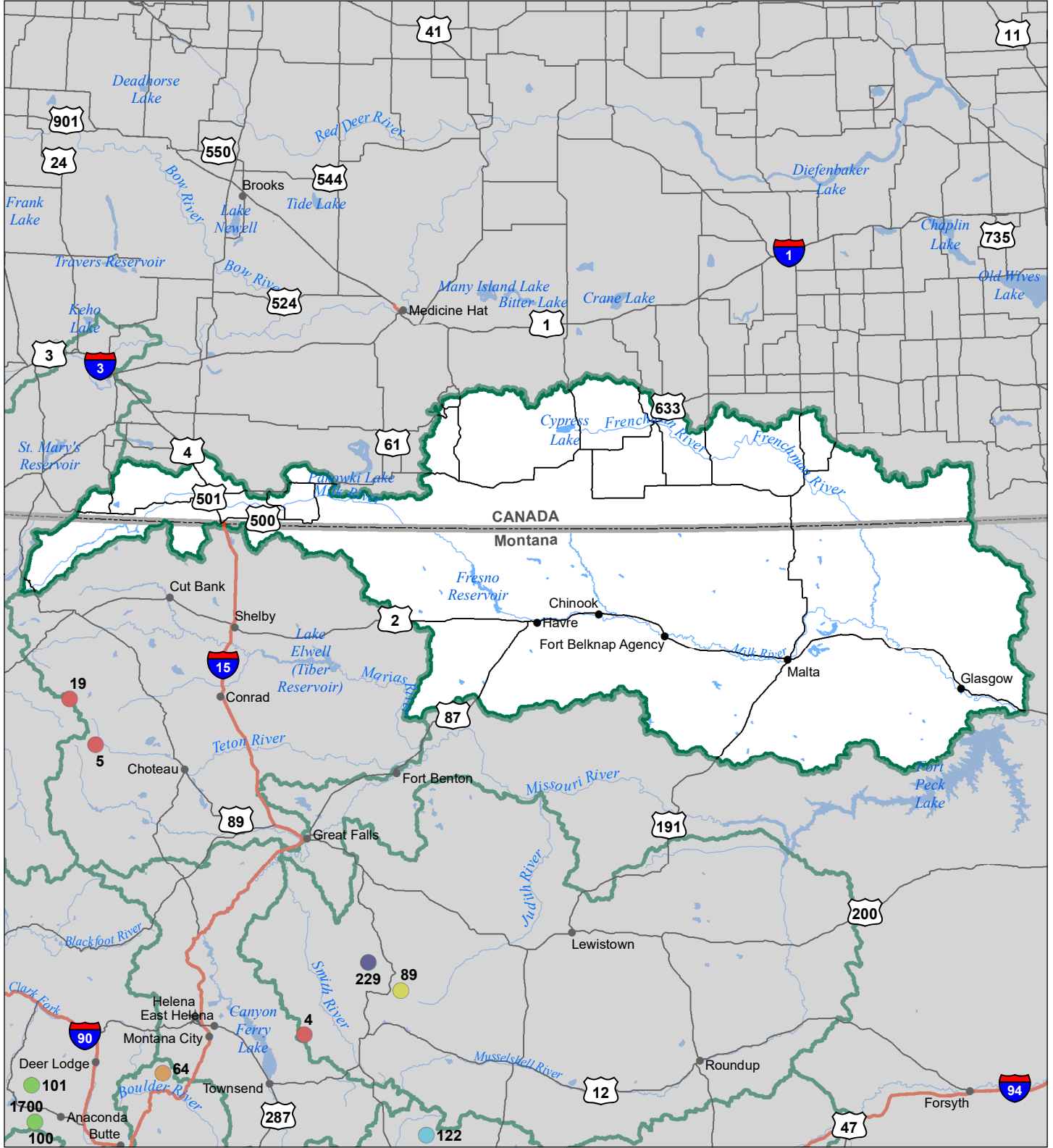
**Snowcourse**

- ⊕ > 150%
- ⊕ 131 - 150%
- ⊕ 111 - 130%
- ⊕ 91 - 110%

- ⊕ 71 - 90%
- ⊕ 51 - 70%
- ⊕ 1 - 50%
- ⊕ \*



# Milk River Basin Snow Water Equivalent Percentage of Normal June 1, 2024



### Snow Water Equivalent Percent of Normal

**SNOTEL**

- > 150%
- 131 - 150%
- 111 - 130%
- 91 - 110%
- 1700
- 100

**Snowcourse**

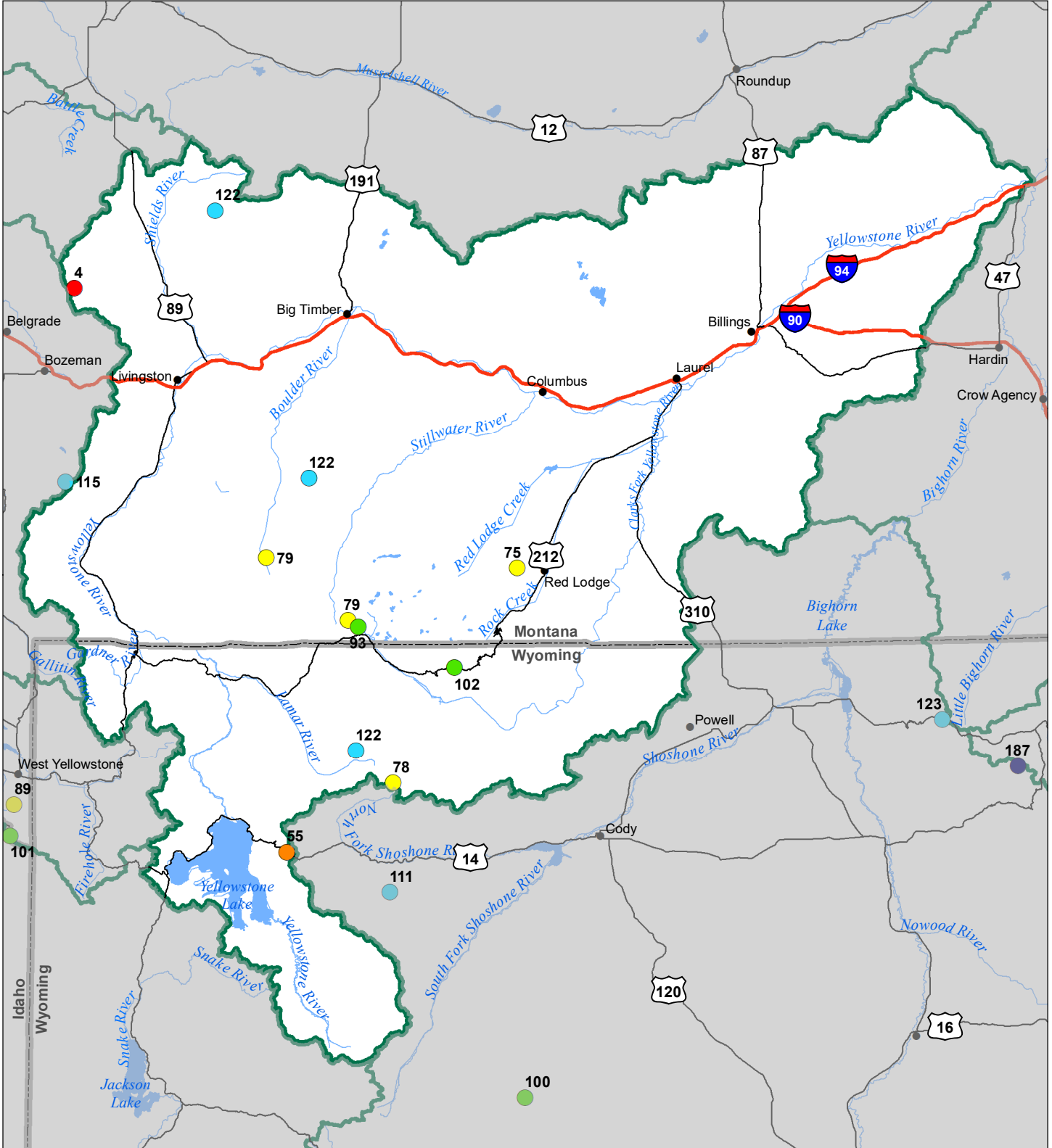
- 71 - 90%
- 51 - 70%
- 1 - 50%
- \*
- 0%

- ⊕ > 150%
- ⊕ 131 - 150%
- ⊕ 111 - 130%
- ⊕ 91 - 110%

- ⊕ 71 - 90%
- ⊕ 51 - 70%
- ⊕ 1 - 50%
- ⊕ \*
- ⊕ 0%



# Upper Yellowstone River Basin Snow Water Equivalent Percentage of Normal June 1, 2024



### Snow Water Equivalent Percent of Normal

**SNOTEL**

- > 150%
- 131 - 150%
- 111 - 130%
- 91 - 110%

- 71 - 90%
- 51 - 70%
- 1 - 50%
- \*

**Snowcourse**

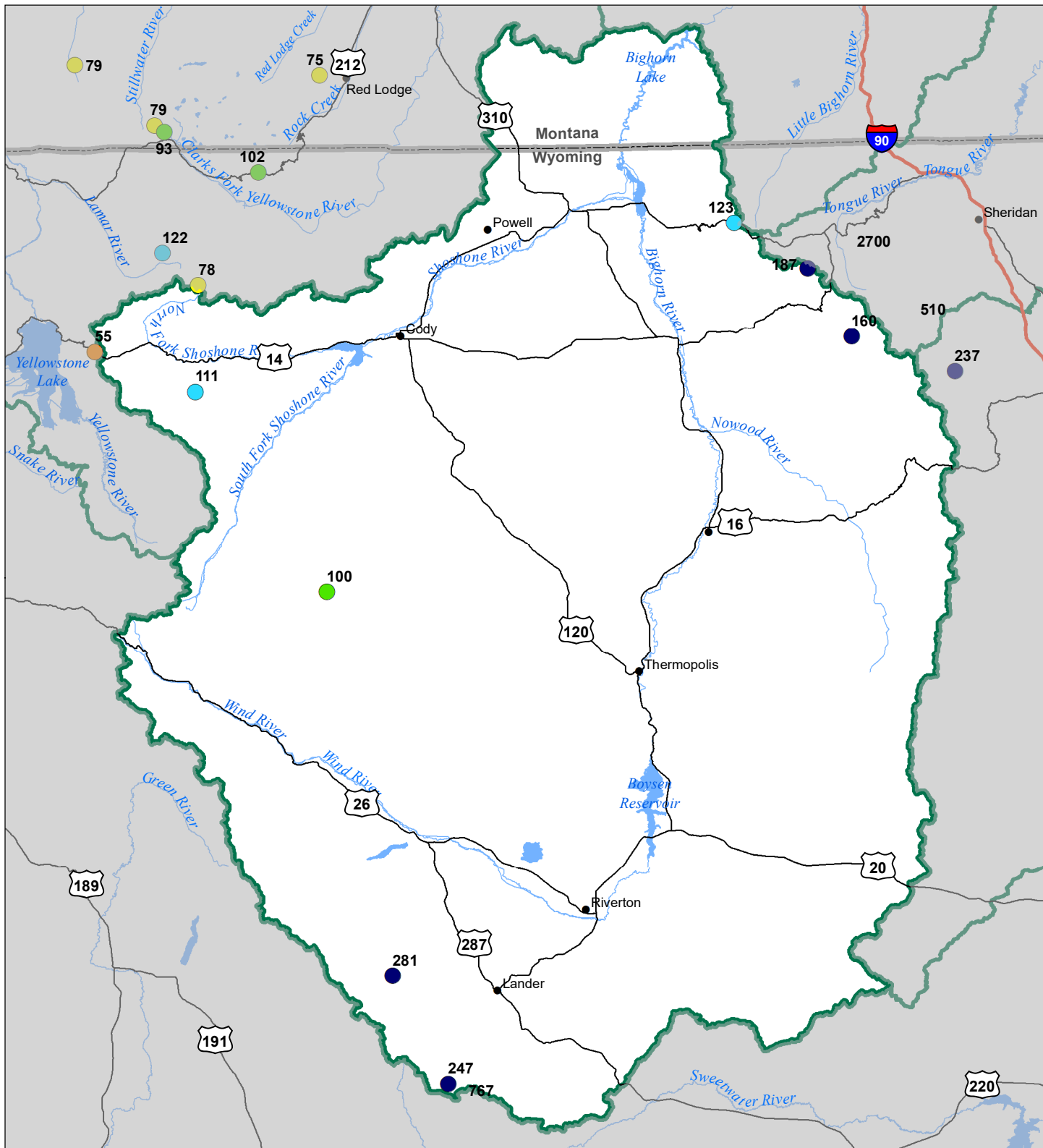
- ⊕ > 150%
- ⊕ 131 - 150%
- ⊕ 111 - 130%
- ⊕ 91 - 110%

- ⊕ 71 - 90%
- ⊕ 51 - 70%
- ⊕ 1 - 50%
- ⊕ \*





# Bighorn River Basin Snow Water Equivalent Percentage of Normal June 1, 2024



## Snow Water Equivalent Percent of Normal

### SNOTEL

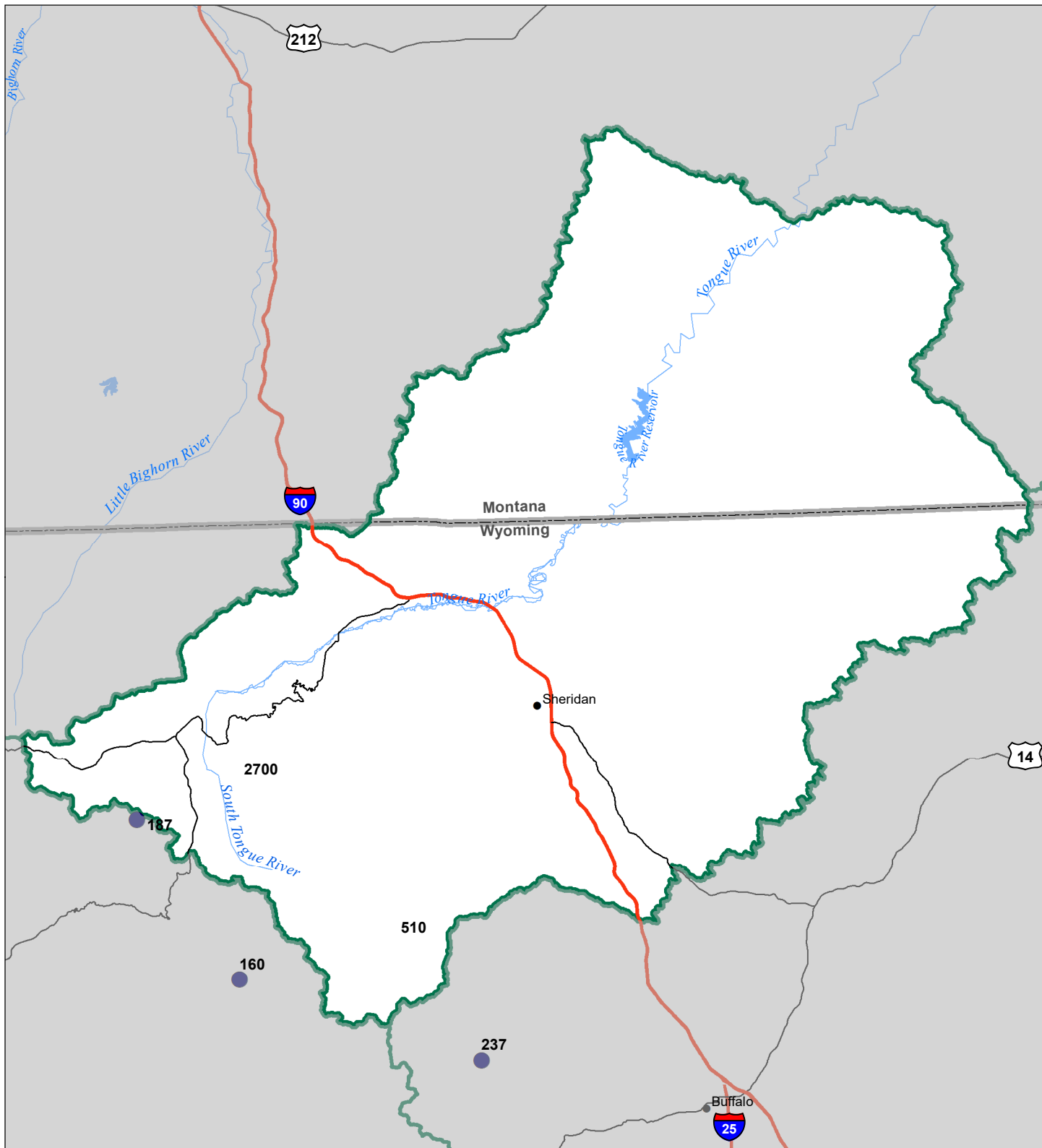
- > 150%
- 131 - 150%
- 111 - 130%
- 91 - 110%
- 71 - 90%
- 51 - 70%
- 1 - 50%
- \*

### Snowcourse

- ⊕ > 150%
- ⊕ 131 - 150%
- ⊕ 111 - 130%
- ⊕ 91 - 110%
- ⊕ 71 - 90%
- ⊕ 51 - 70%
- ⊕ 1 - 50%
- ⊕ \*



# Tongue River Basin Snow Water Equivalent Percentage of Normal June 1, 2024



## Snow Water Equivalent Percent of Normal

### SNOTEL

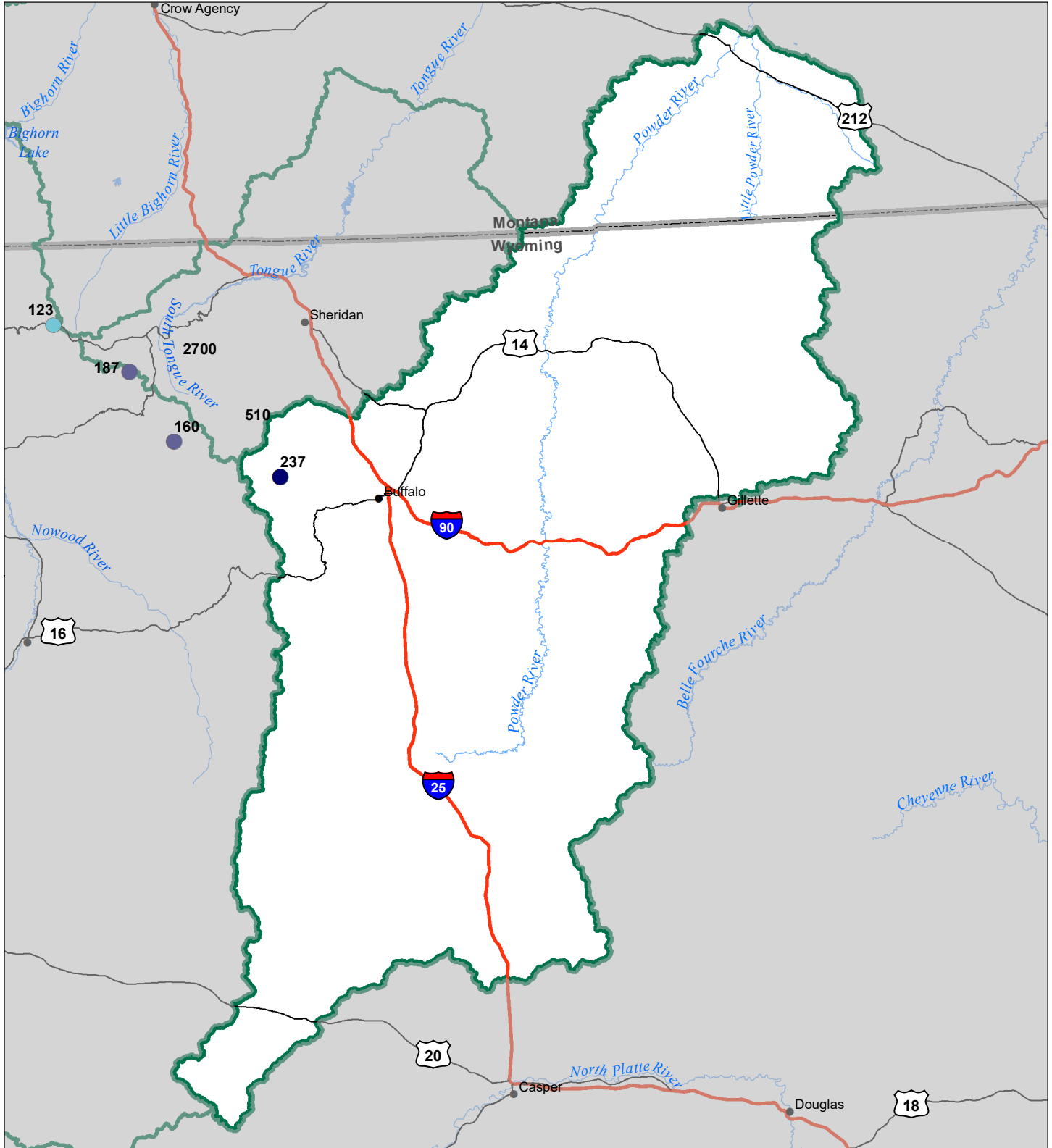
- > 150%
- 131 - 150%
- 111 - 130%
- 91 - 110%
- 71 - 90%
- 51 - 70%
- 1 - 50%
- \* 0%

### Snowcourse

- + > 150%
- + 131 - 150%
- + 111 - 130%
- + 91 - 110%
- + 71 - 90%
- + 51 - 70%
- + 1 - 50%
- \* 0%



# Powder River Basin Snow Water Equivalent Percentage of Normal June 1, 2024



### Snow Water Equivalent Percent of Normal

**SNOTEL**

- > 150%
- 131 - 150%
- 111 - 130%
- 91 - 110%
- 71 - 90%
- 51 - 70%
- 1 - 50%
- \*
- 0%

**Snowcourse**

- ⊕ > 150%
- ⊕ 131 - 150%
- ⊕ 111 - 130%
- ⊕ 91 - 110%
- ⊕ 71 - 90%
- ⊕ 51 - 70%
- ⊕ 1 - 50%
- ⊕ \*
- ⊕ 0%

