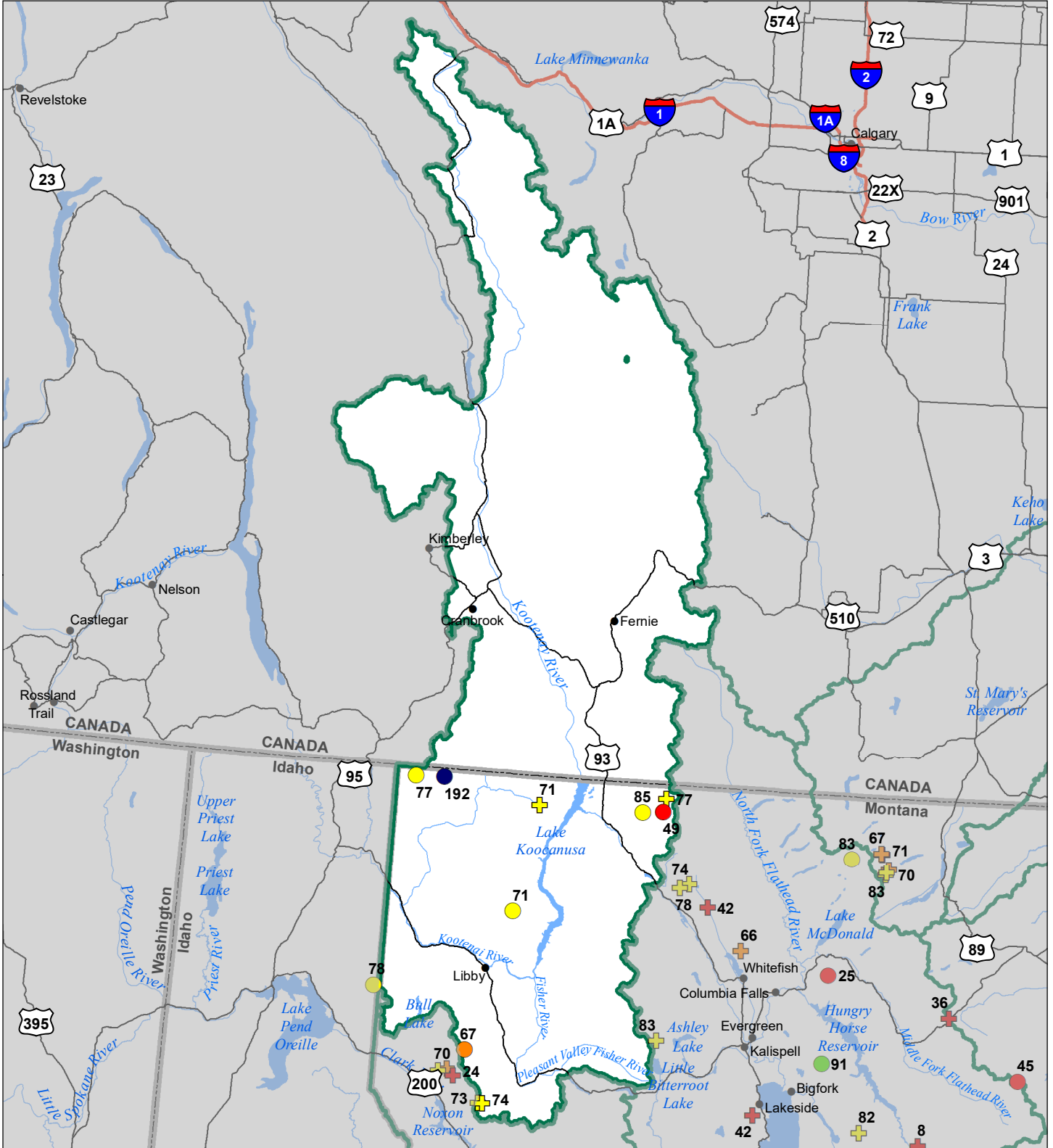


Kootenai River Basin Snow Water Equivalent Percentage of Normal May 1, 2024



Snow Water Equivalent Percent of Normal

SNOTEL

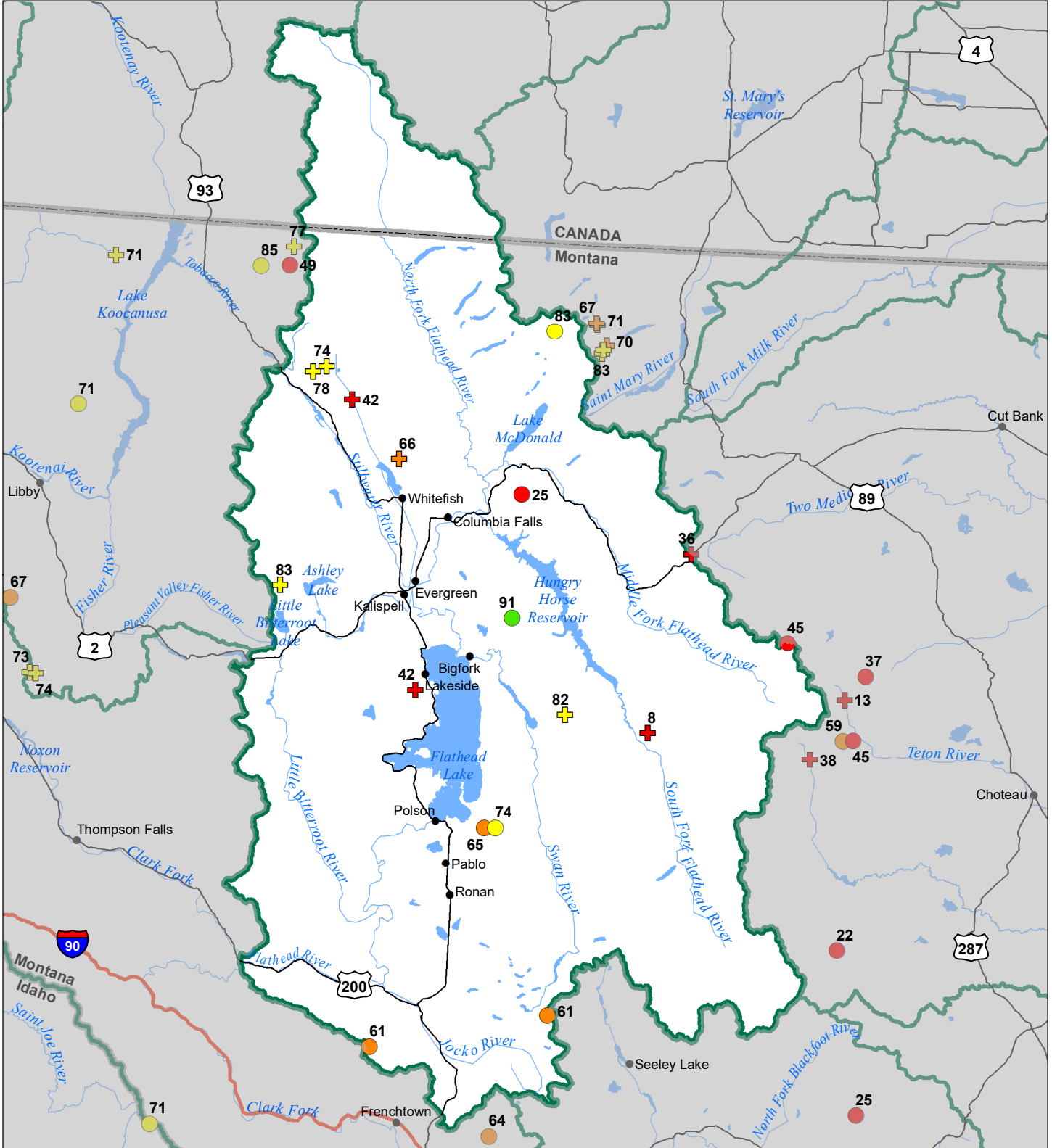
- > 150%
- 131 - 150%
- 111 - 130%
- 91 - 110%
- 71 - 90%
- 51 - 70%
- 1 - 50%
- * 0%

Snowcourse

- ⊕ > 150%
- ⊕ 131 - 150%
- ⊕ 111 - 130%
- ⊕ 91 - 110%
- ⊕ 71 - 90%
- ⊕ 51 - 70%
- ⊕ 1 - 50%
- * 0%



Flathead River Basin Snow Water Equivalent Percentage of Normal May 1, 2024



Snow Water Equivalent Percent of Normal

SNOTEL

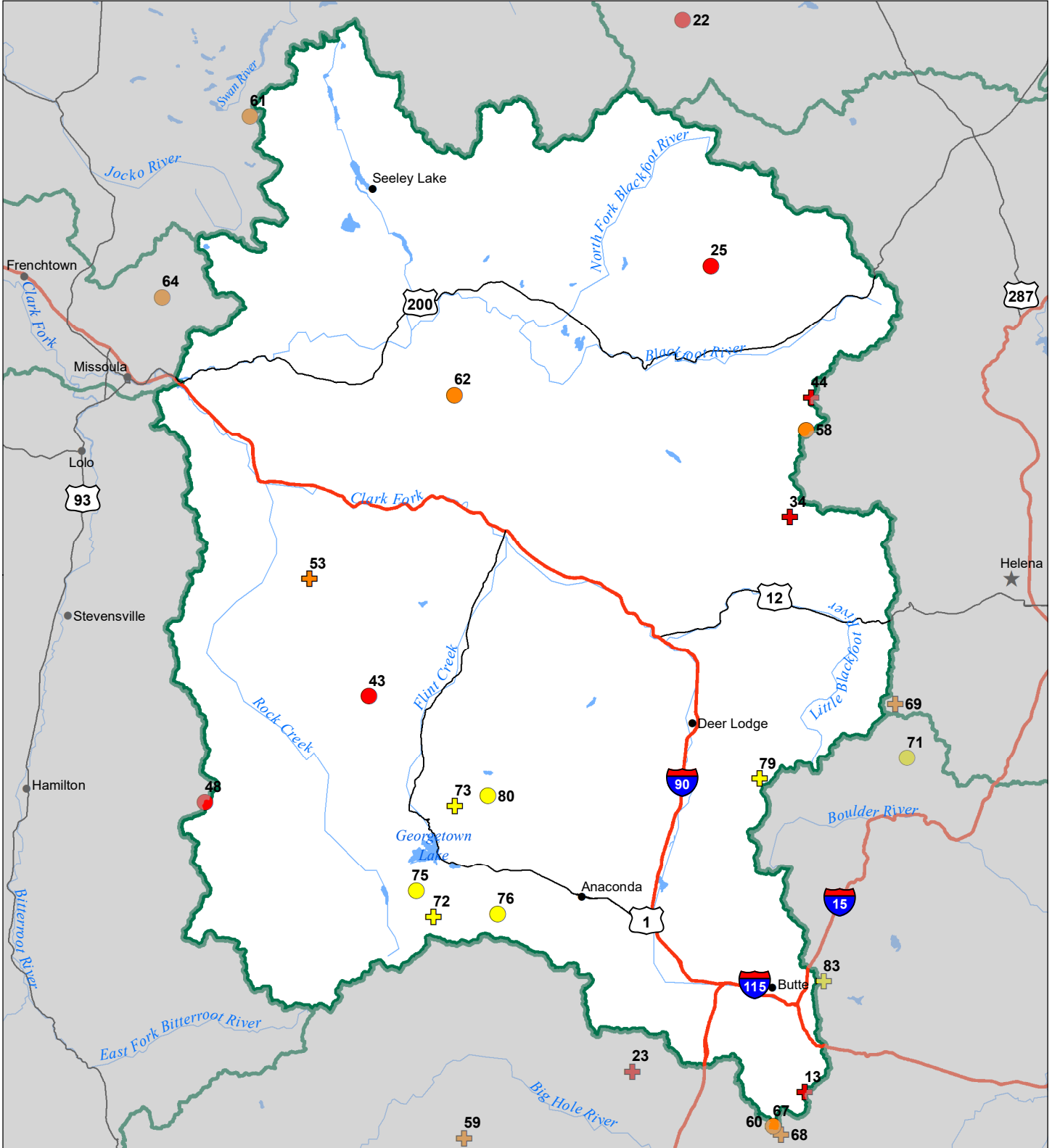
- > 150%
- 131 - 150%
- 111 - 130%
- 91 - 110%

Snowcourse

- 71 - 90%
- 51 - 70%
- 1 - 50%
- 0%
- + > 150%
- + 131 - 150%
- + 111 - 130%
- + 91 - 110%
- + 71 - 90%
- + 51 - 70%
- + 1 - 50%
- + 0%



Upper Clark Fork River Basin Snow Water Equivalent Percentage of Normal May 1, 2024



Snow Water Equivalent Percent of Normal

SNOTEL

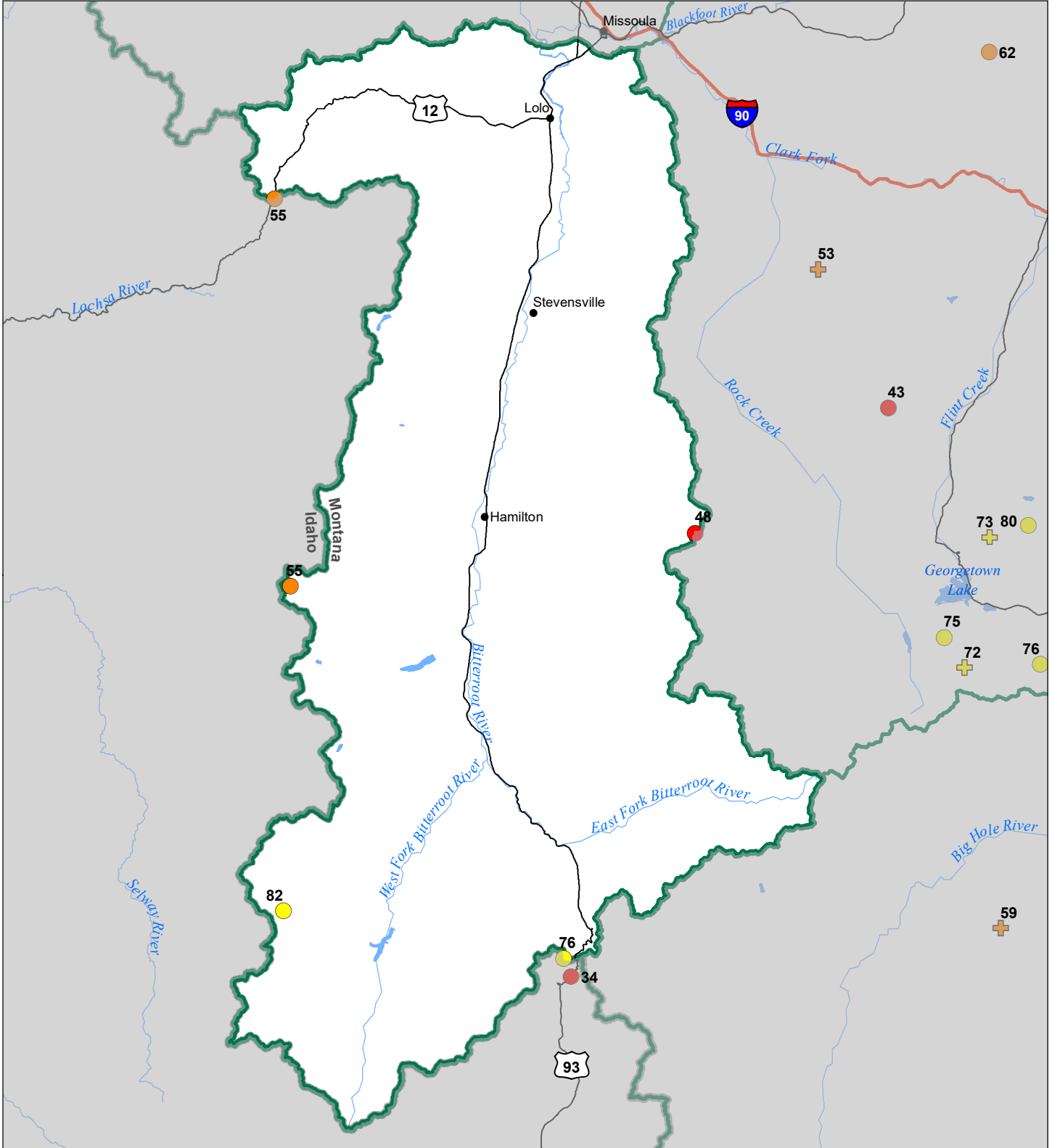
- > 150%
- 131 - 150%
- 111 - 130%
- 91 - 110%
- 71 - 90%
- 51 - 70%
- 1 - 50%
- * 0%

Snowcourse

- ⊕ > 150%
- ⊕ 131 - 150%
- ⊕ 111 - 130%
- ⊕ 91 - 110%
- ⊕ 71 - 90%
- ⊕ 51 - 70%
- ⊕ 1 - 50%
- * 0%



Bitterroot River Basin Snow Water Equivalent Percentage of Normal May 1, 2024



Snow Water Equivalent Percent of Normal

SNOTEL

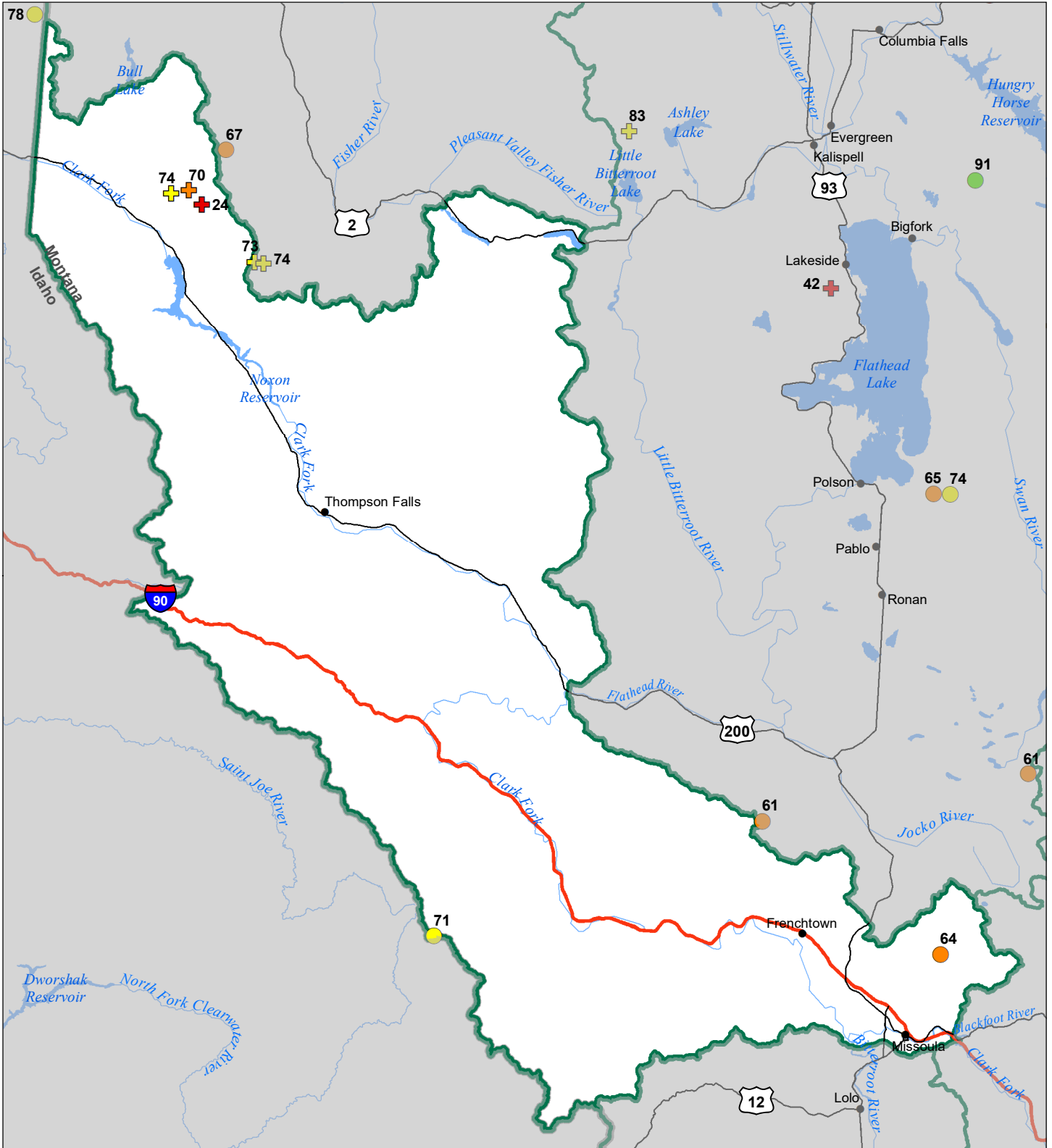
- > 150%
- 131 - 150%
- 111 - 130%
- 91 - 110%
- 71 - 90%
- 51 - 70%
- 1 - 50%
- * 0%

Snowcourse

- ⊕ > 150%
- ⊕ 131 - 150%
- ⊕ 111 - 130%
- ⊕ 91 - 110%
- ⊕ 71 - 90%
- ⊕ 51 - 70%
- ⊕ 1 - 50%
- * 0%



Lower Clark Fork River Basin Snow Water Equivalent Percentage of Normal May 1, 2024



Snow Water Equivalent Percent of Normal

SNOTEL

- > 150%
- 131 - 150%
- 111 - 130%
- 91 - 110%

- 71 - 90%
- 51 - 70%
- 1 - 50%
- * 0%

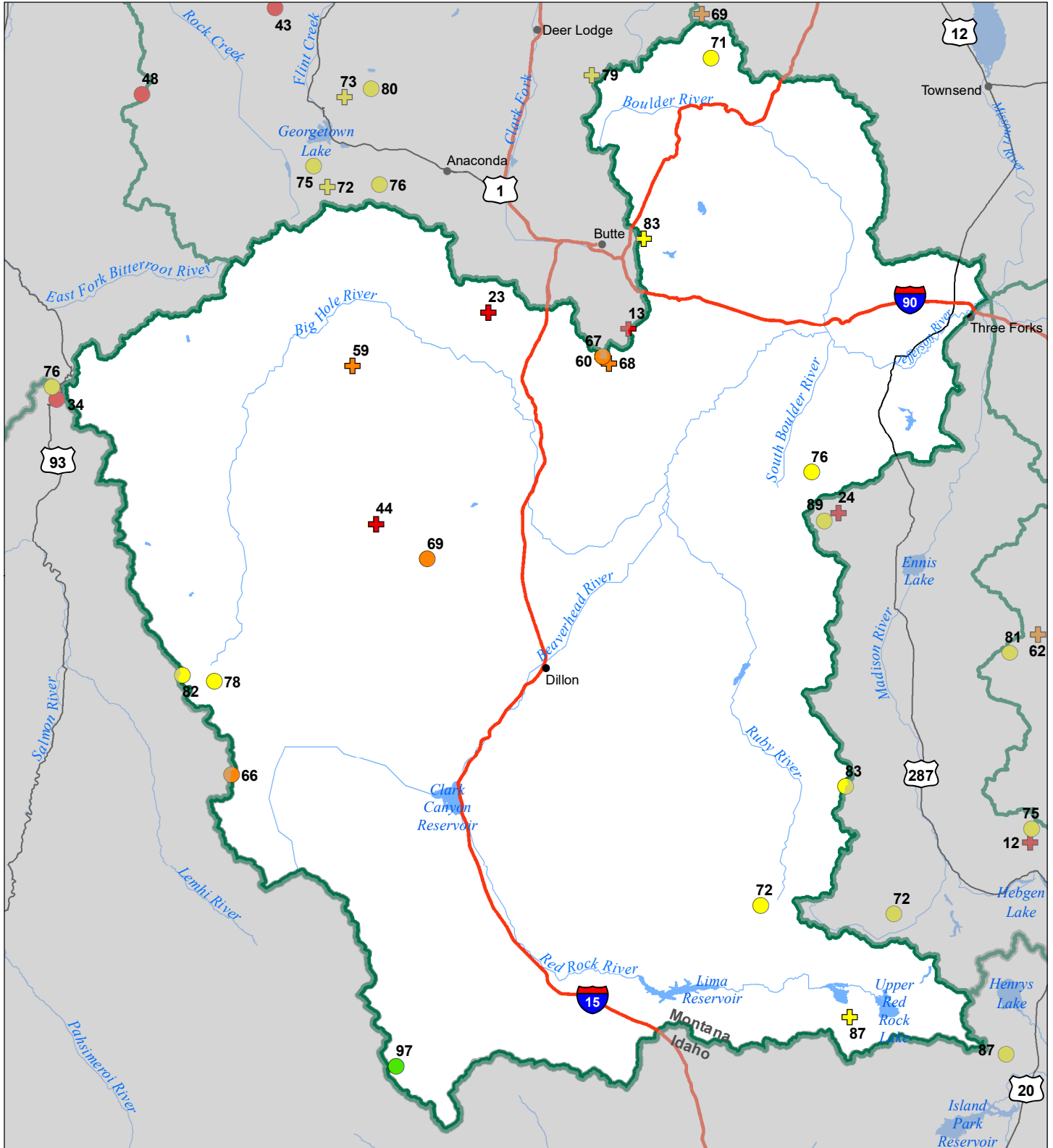
Snowcourse

- ⊕ > 150%
- ⊕ 131 - 150%
- ⊕ 111 - 130%
- ⊕ 91 - 110%

- ⊕ 71 - 90%
- ⊕ 51 - 70%
- ⊕ 1 - 50%
- * 0%



Jefferson River Basin Snow Water Equivalent Percentage of Normal May 1, 2024



Snow Water Equivalent Percent of Normal

SNOTEL

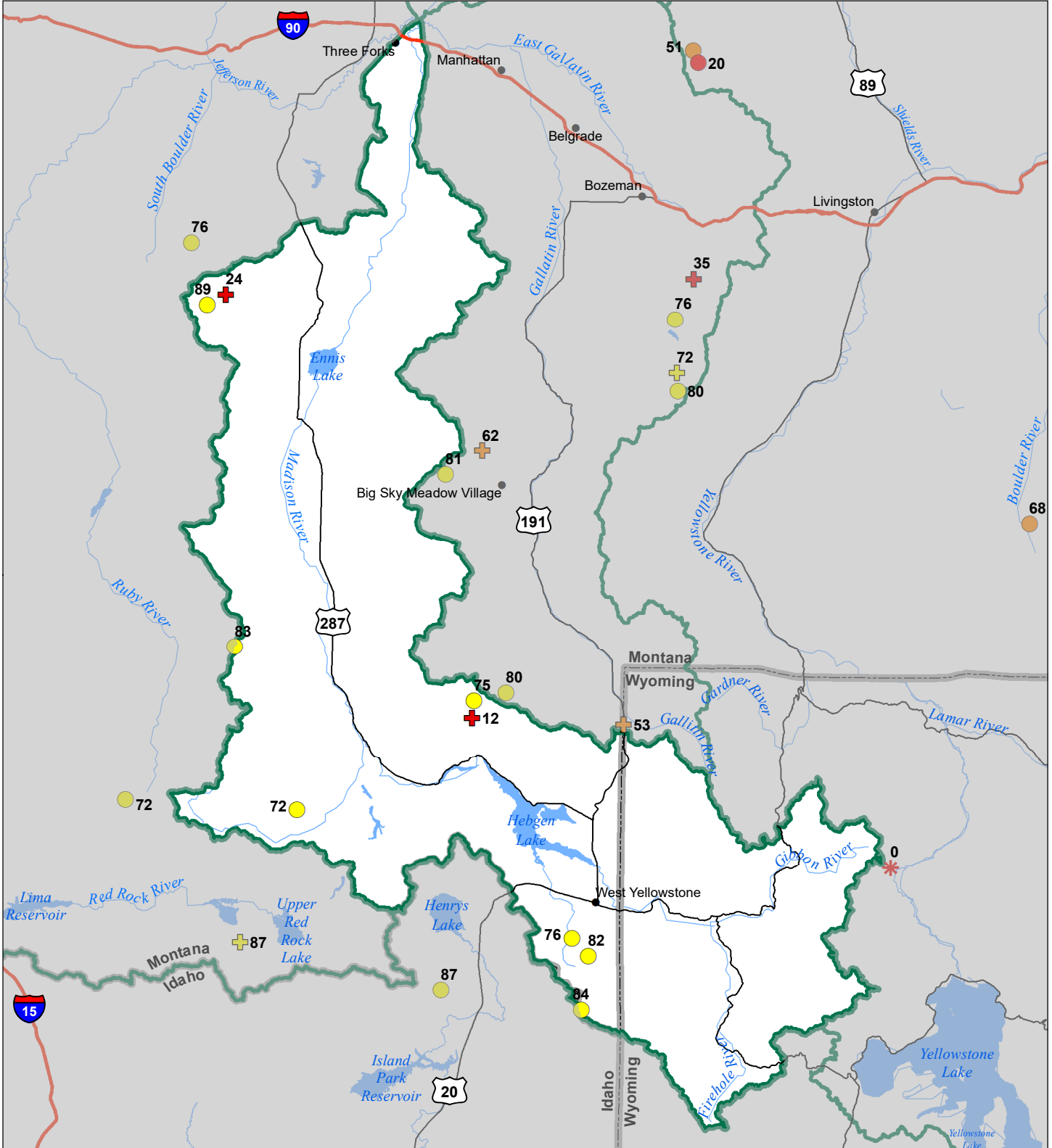
- > 150%
- 131 - 150%
- 111 - 130%
- 91 - 110%
- 71 - 90%
- 51 - 70%
- 1 - 50%
- *

Snowcourse

- ⊕ > 150%
- ⊕ 131 - 150%
- ⊕ 111 - 130%
- ⊕ 91 - 110%
- ⊕ 71 - 90%
- ⊕ 51 - 70%
- ⊕ 1 - 50%
- ⊕ *



Madison River Basin Snow Water Equivalent Percentage of Normal May 1, 2024



Snow Water Equivalent Percent of Normal

SNOTEL

- > 150%
- 131 - 150%
- 111 - 130%
- 91 - 110%

- 71 - 90%
- 51 - 70%
- 1 - 50%
- ✱ 0%

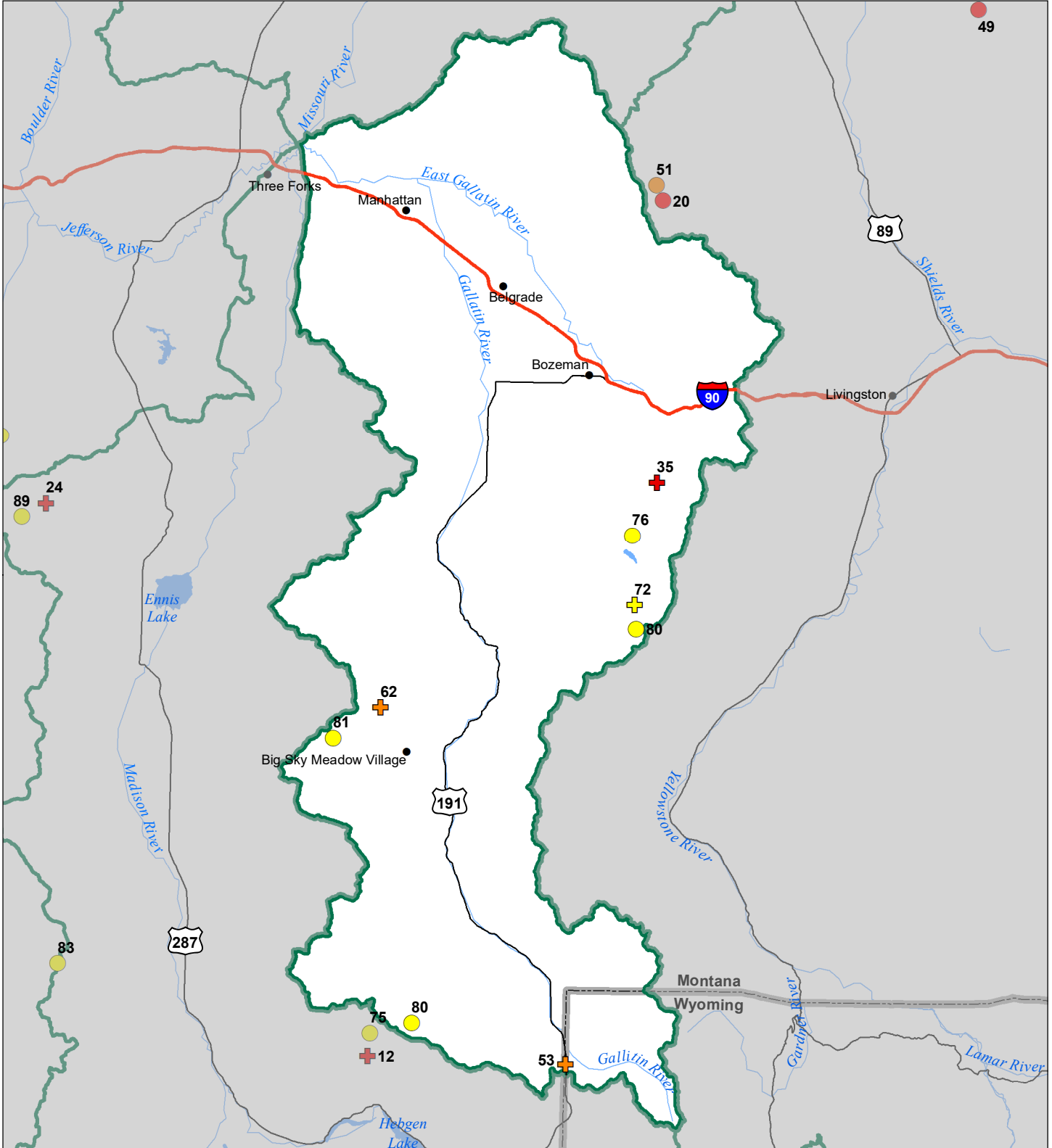
Snowcourse

- + > 150%
- + 131 - 150%
- + 111 - 130%
- + 91 - 110%

- + 71 - 90%
- + 51 - 70%
- + 1 - 50%
- ✱ 0%



Gallatin River Basin Snow Water Equivalent Percentage of Normal May 1, 2024



Snow Water Equivalent Percent of Normal

SNOTEL

- > 150%
- 131 - 150%
- 111 - 130%
- 91 - 110%

- 71 - 90%
- 51 - 70%
- 1 - 50%
- * 0%

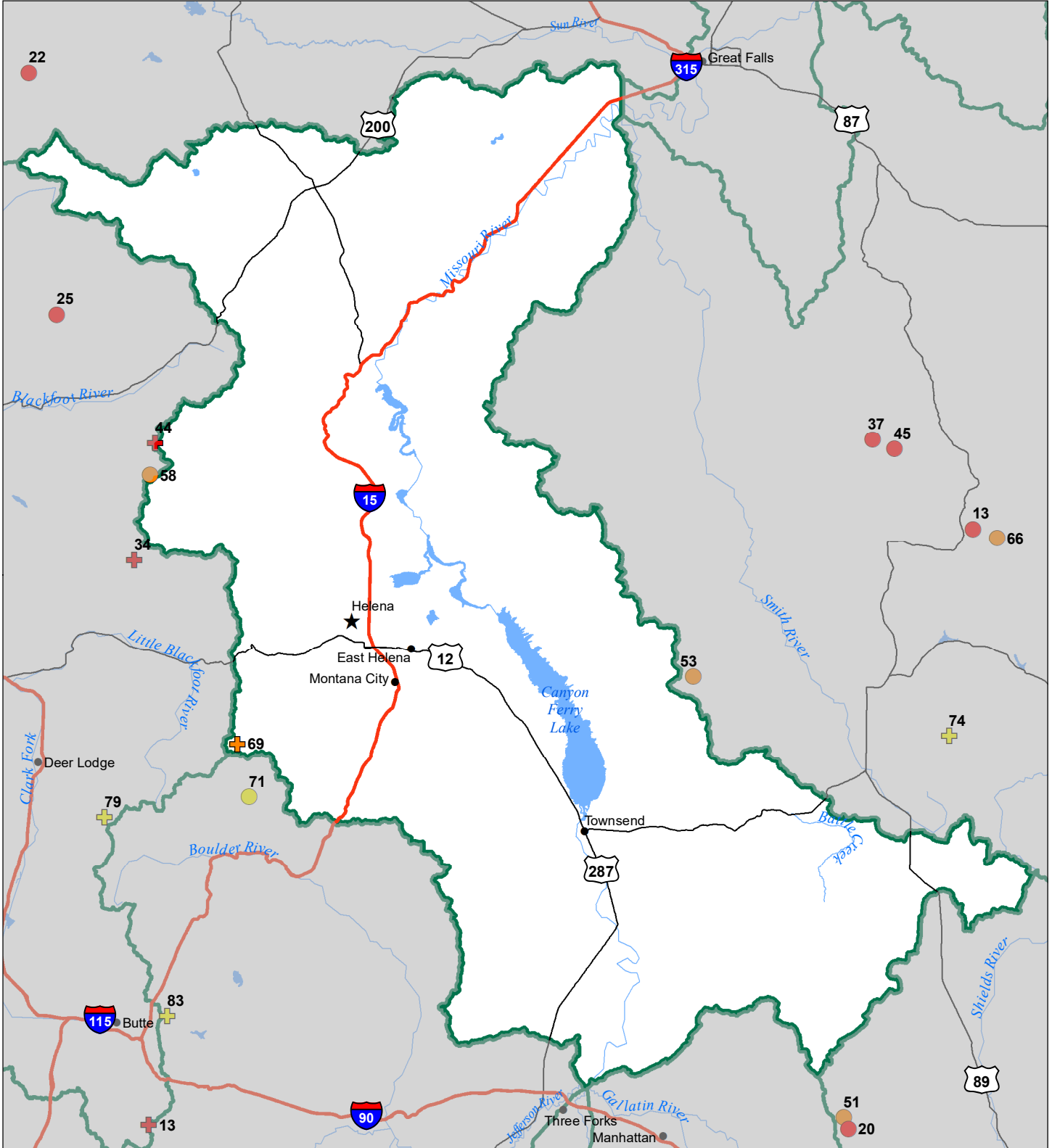
Snowcourse

- ⊕ > 150%
- ⊕ 131 - 150%
- ⊕ 111 - 130%
- ⊕ 91 - 110%

- ⊕ 71 - 90%
- ⊕ 51 - 70%
- ⊕ 1 - 50%
- * 0%



Headwaters Mainstem River Basin Snow Water Equivalent Percentage of Normal May 1, 2024



Snow Water Equivalent Percent of Normal

SNOTEL

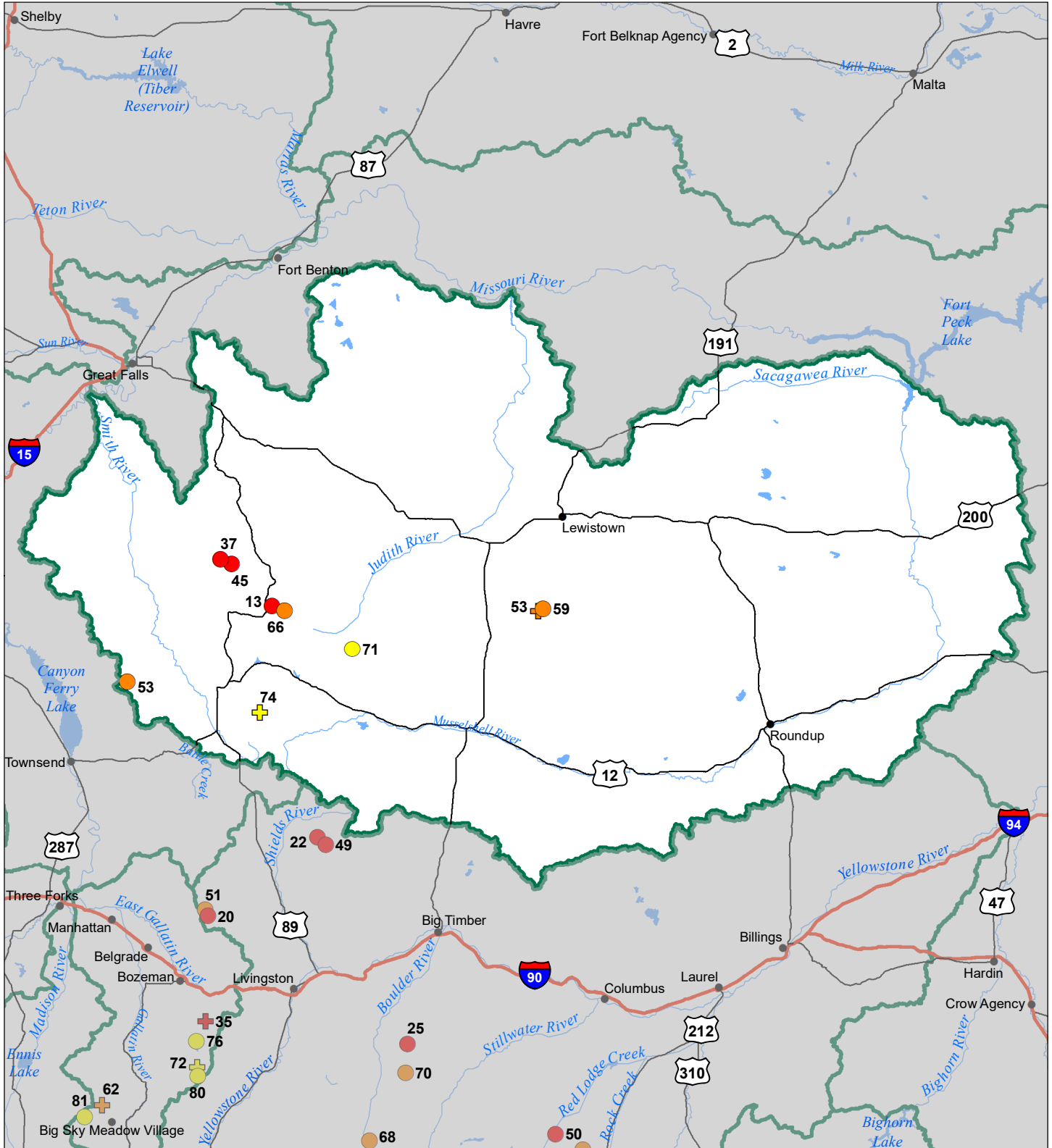
- > 150%
- 131 - 150%
- 111 - 130%
- 91 - 110%
- 71 - 90%
- 51 - 70%
- 1 - 50%
- * 0%

Snowcourse

- ⊕ > 150%
- ⊕ 131 - 150%
- ⊕ 111 - 130%
- ⊕ 91 - 110%
- ⊕ 71 - 90%
- ⊕ 51 - 70%
- ⊕ 1 - 50%
- * 0%



Smith-Judith-Musselshell River Basin Snow Water Equivalent Percentage of Normal May 1, 2024



Snow Water Equivalent Percent of Normal

SNOTEL

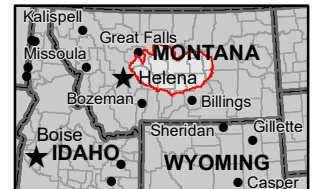
- > 150%
- 131 - 150%
- 111 - 130%
- 91 - 110%

- 71 - 90%
- 51 - 70%
- 1 - 50%
- * 0%

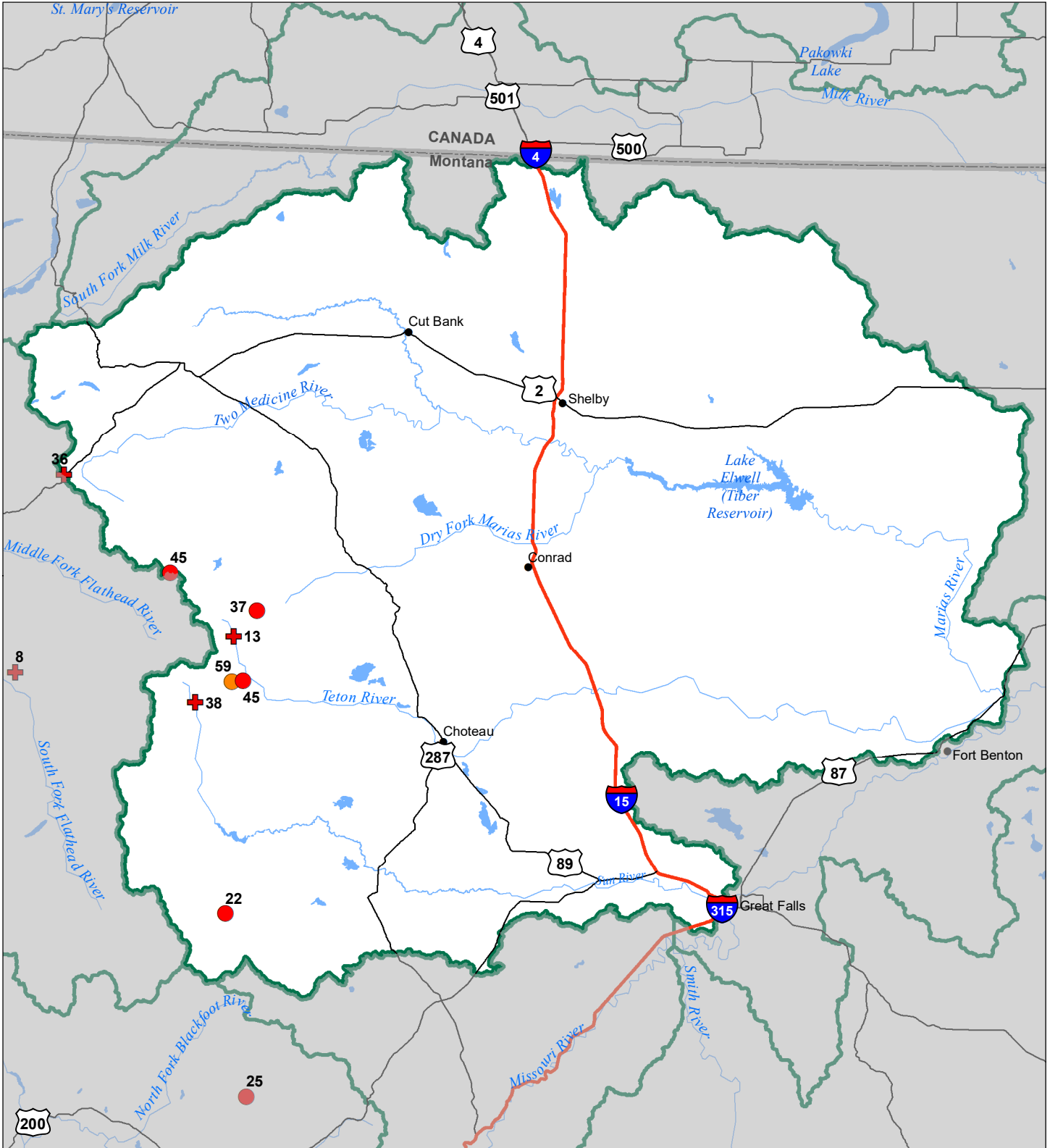
Snowcourse

- ⊕ > 150%
- ⊕ 131 - 150%
- ⊕ 111 - 130%
- ⊕ 91 - 110%

- ⊕ 71 - 90%
- ⊕ 51 - 70%
- ⊕ 1 - 50%
- * 0%



Sun-Teton-Marias River Basin Snow Water Equivalent Percentage of Normal May 1, 2024



Snow Water Equivalent Percent of Normal

SNOTEL

- > 150%
- 131 - 150%
- 111 - 130%
- 91 - 110%

- 71 - 90%
- 51 - 70%
- 1 - 50%
- * 0%

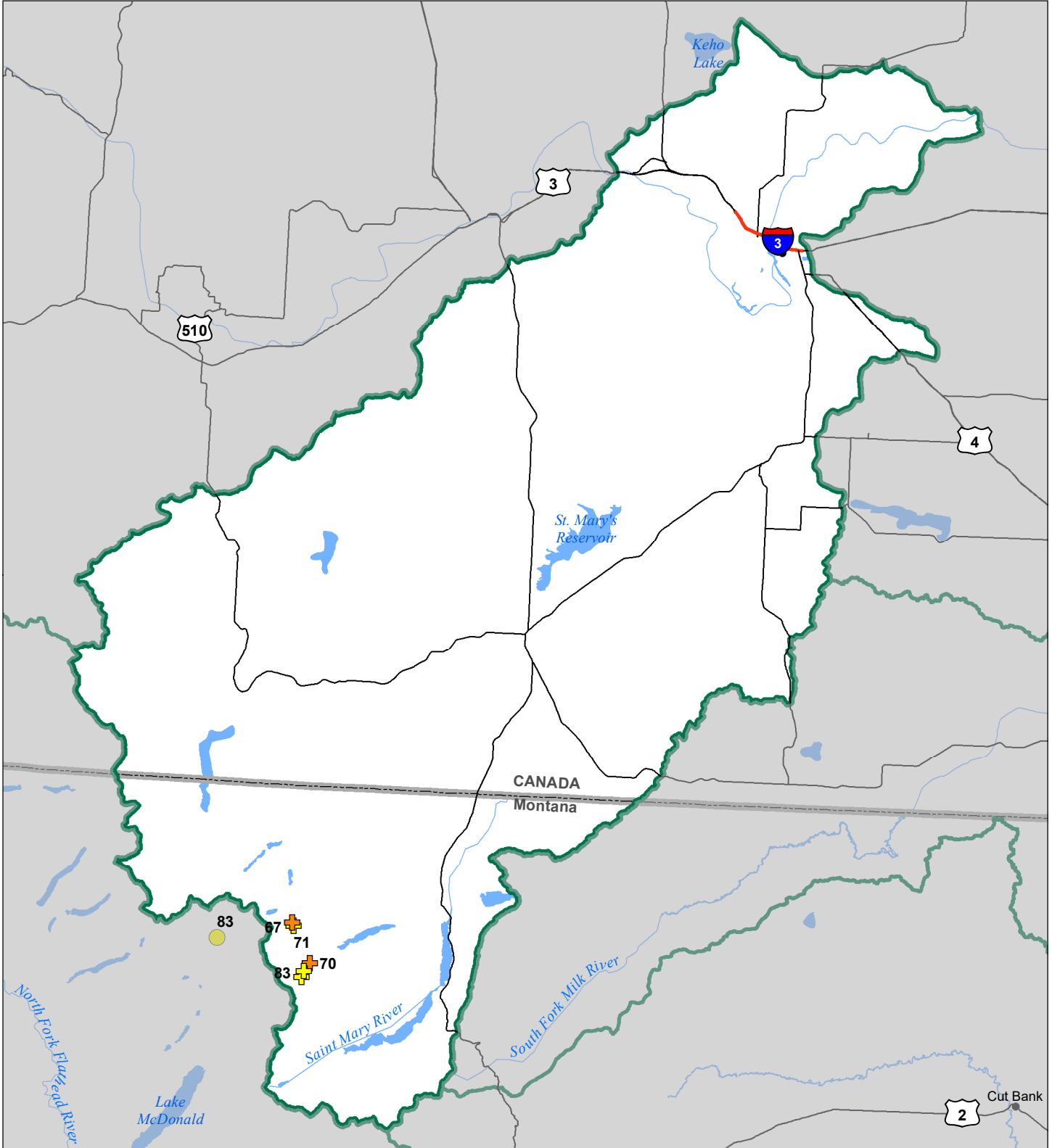
Snowcourse

- ⊕ > 150%
- ⊕ 131 - 150%
- ⊕ 111 - 130%
- ⊕ 91 - 110%

- ⊕ 71 - 90%
- ⊕ 51 - 70%
- ⊕ 1 - 50%
- * 0%



St Mary's River Basin Snow Water Equivalent Percentage of Normal May 1, 2024



Snow Water Equivalent Percent of Normal

SNOTEL

- > 150%
- 131 - 150%
- 111 - 130%
- 91 - 110%

- 71 - 90%
- 51 - 70%
- 1 - 50%
- * 0%

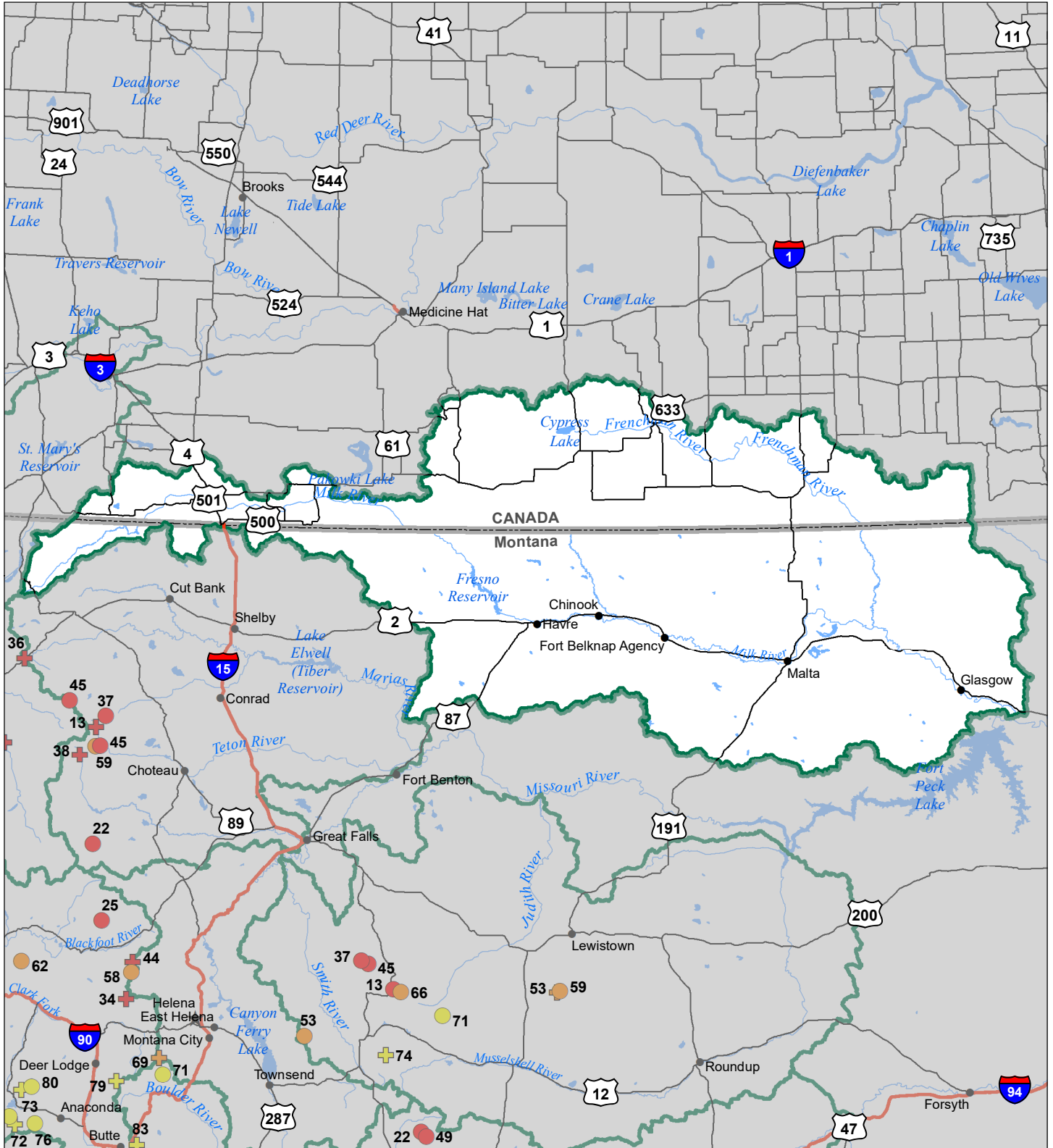
Snowcourse

- ✚ > 150%
- ✚ 131 - 150%
- ✚ 111 - 130%
- ✚ 91 - 110%

- ✚ 71 - 90%
- ✚ 51 - 70%
- ✚ 1 - 50%
- * 0%



Milk River Basin Snow Water Equivalent Percentage of Normal May 1, 2024



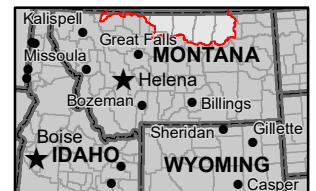
Snow Water Equivalent Percent of Normal

SNOTEL

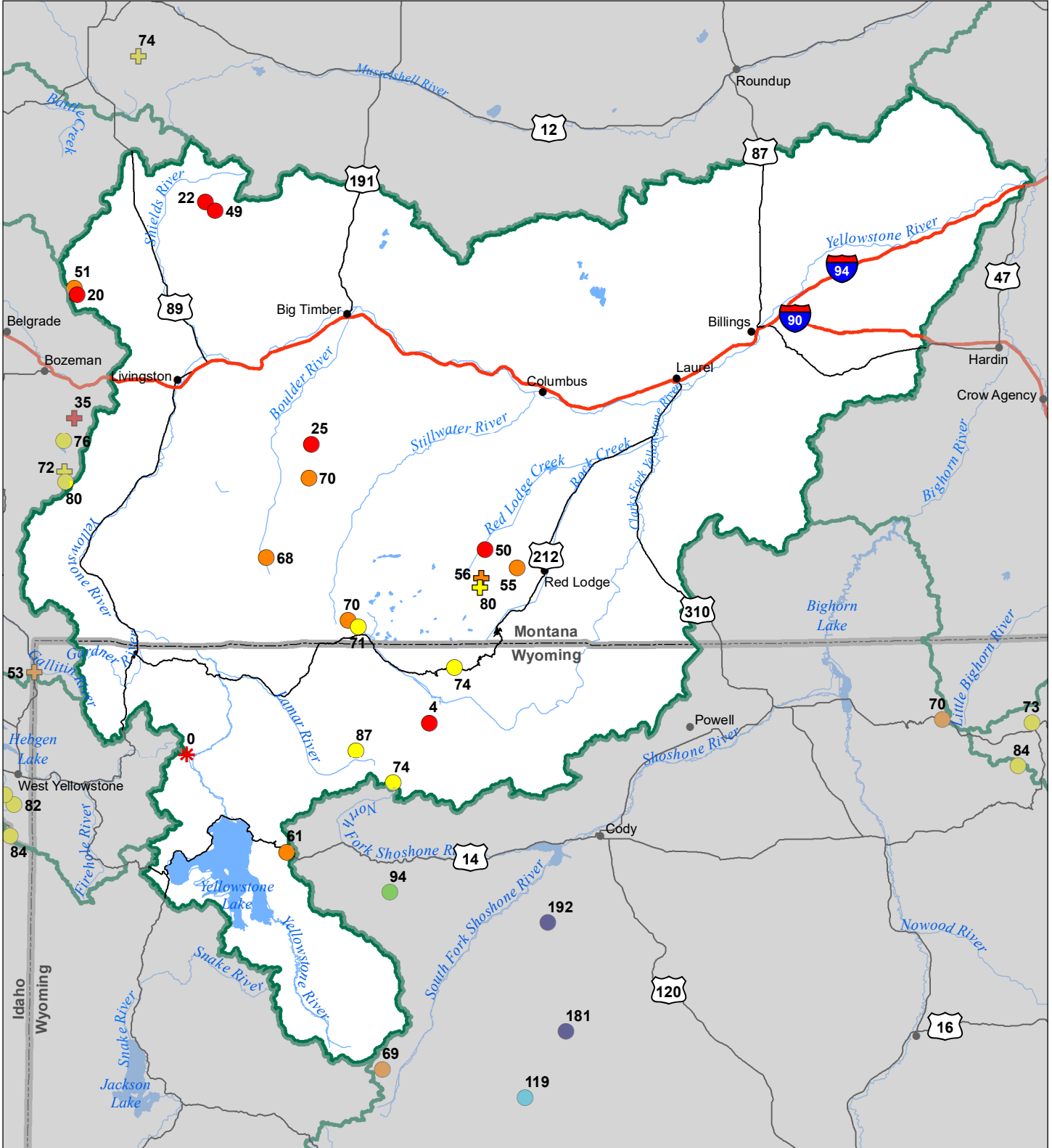
- > 150%
- 131 - 150%
- 111 - 130%
- 91 - 110%
- 71 - 90%
- 51 - 70%
- 1 - 50%
- * 0%

Snowcourse

- ⊕ > 150%
- ⊕ 131 - 150%
- ⊕ 111 - 130%
- ⊕ 91 - 110%
- ⊕ 71 - 90%
- ⊕ 51 - 70%
- ⊕ 1 - 50%
- * 0%



Upper Yellowstone River Basin Snow Water Equivalent Percentage of Normal May 1, 2024



Snow Water Equivalent Percent of Normal

SNOTEL

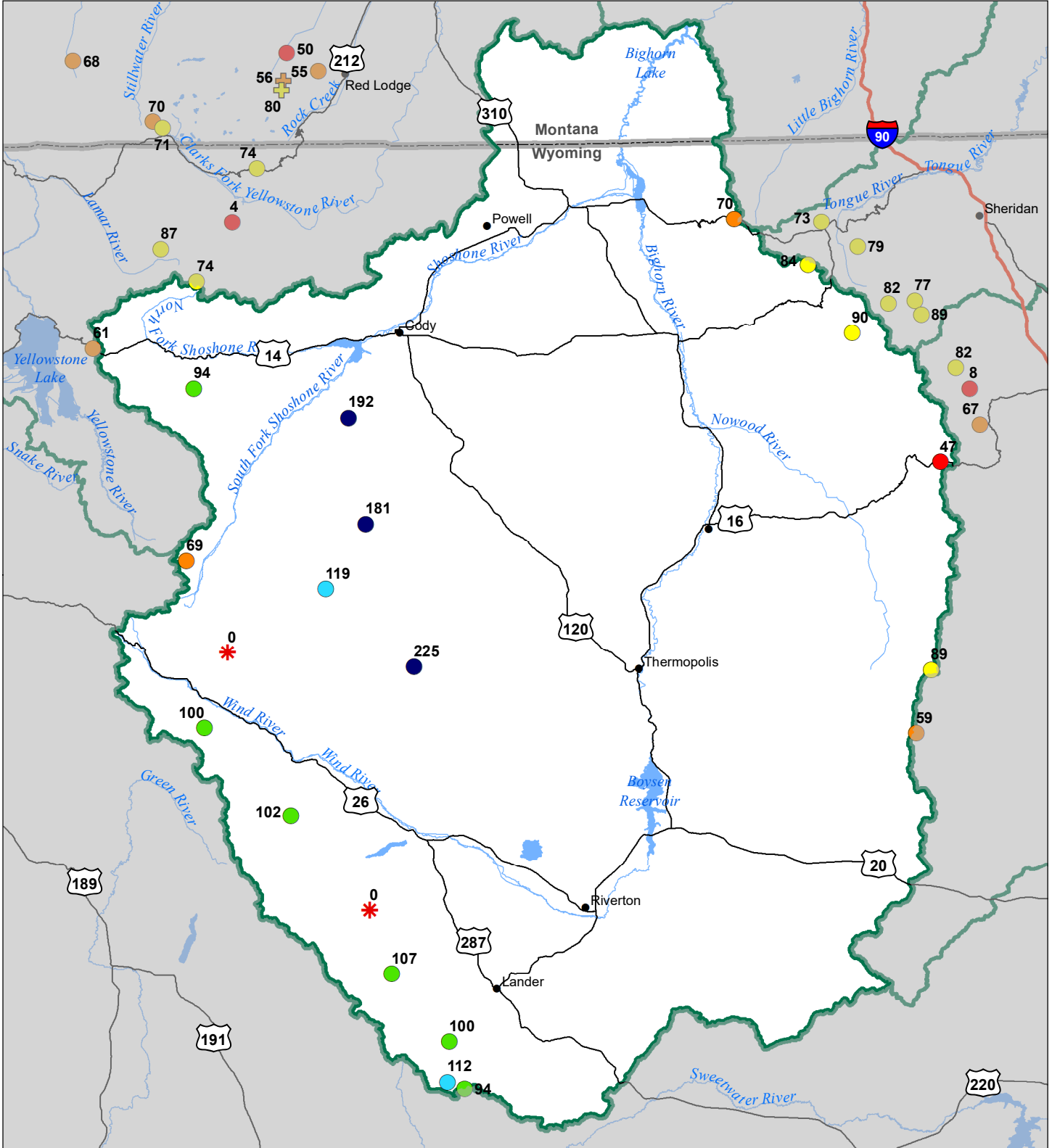
- > 150%
- 131 - 150%
- 111 - 130%
- 91 - 110%
- 71 - 90%
- 51 - 70%
- 1 - 50%
- * 0%

Snowcourse

- ⊕ > 150%
- ⊕ 131 - 150%
- ⊕ 111 - 130%
- ⊕ 91 - 110%
- ⊕ 71 - 90%
- ⊕ 51 - 70%
- ⊕ 1 - 50%
- * 0%



Bighorn River Basin Snow Water Equivalent Percentage of Normal May 1, 2024



Snow Water Equivalent Percent of Normal

SNOTEL

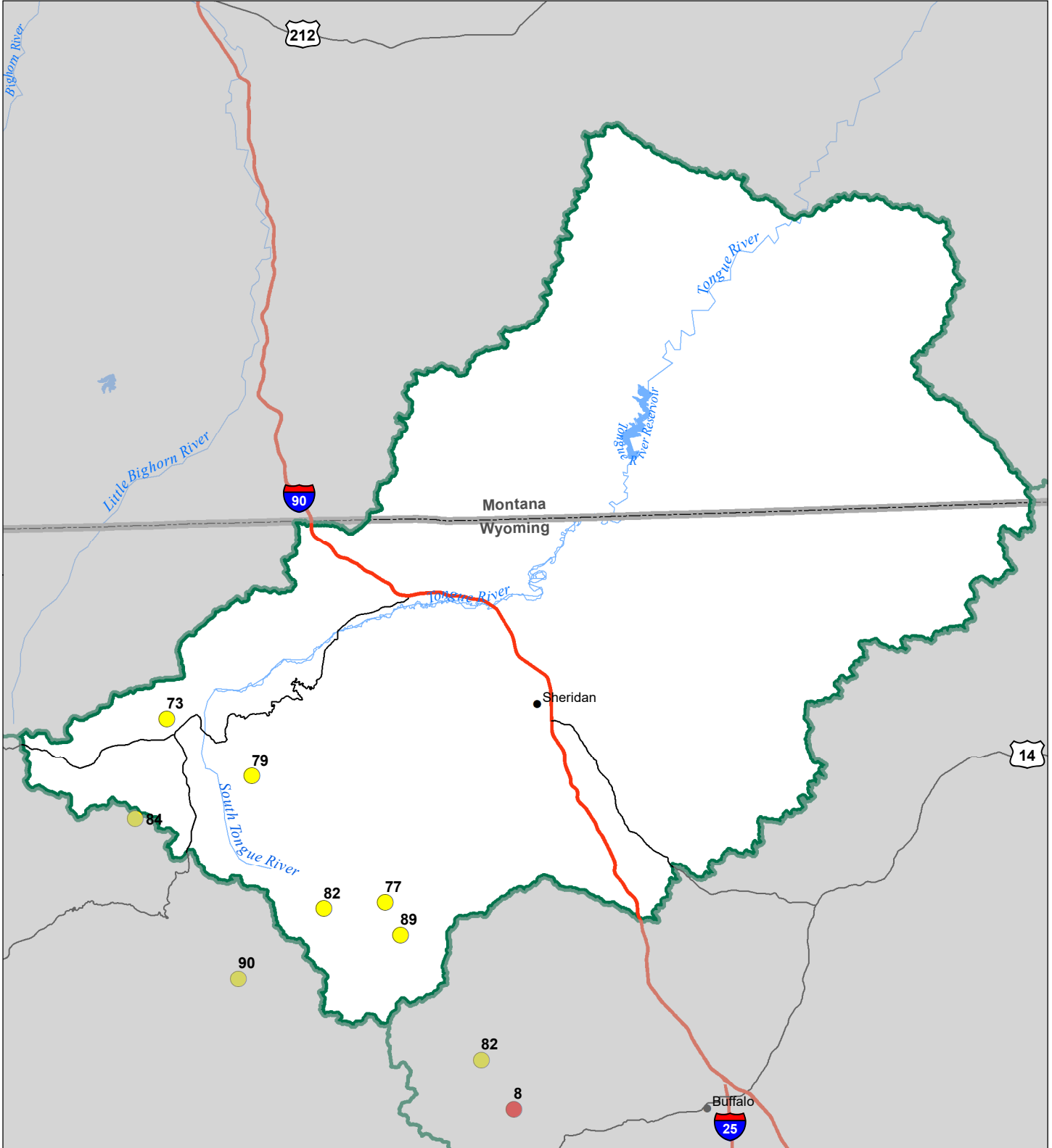
- > 150%
- 131 - 150%
- 111 - 130%
- 91 - 110%
- 71 - 90%
- 51 - 70%
- 1 - 50%
- *

Snowcourse

- ⊕ > 150%
- ⊕ 131 - 150%
- ⊕ 111 - 130%
- ⊕ 91 - 110%
- ⊕ 71 - 90%
- ⊕ 51 - 70%
- ⊕ 1 - 50%
- ⊕ *



Tongue River Basin Snow Water Equivalent Percentage of Normal May 1, 2024



Snow Water Equivalent Percent of Normal

SNOTEL

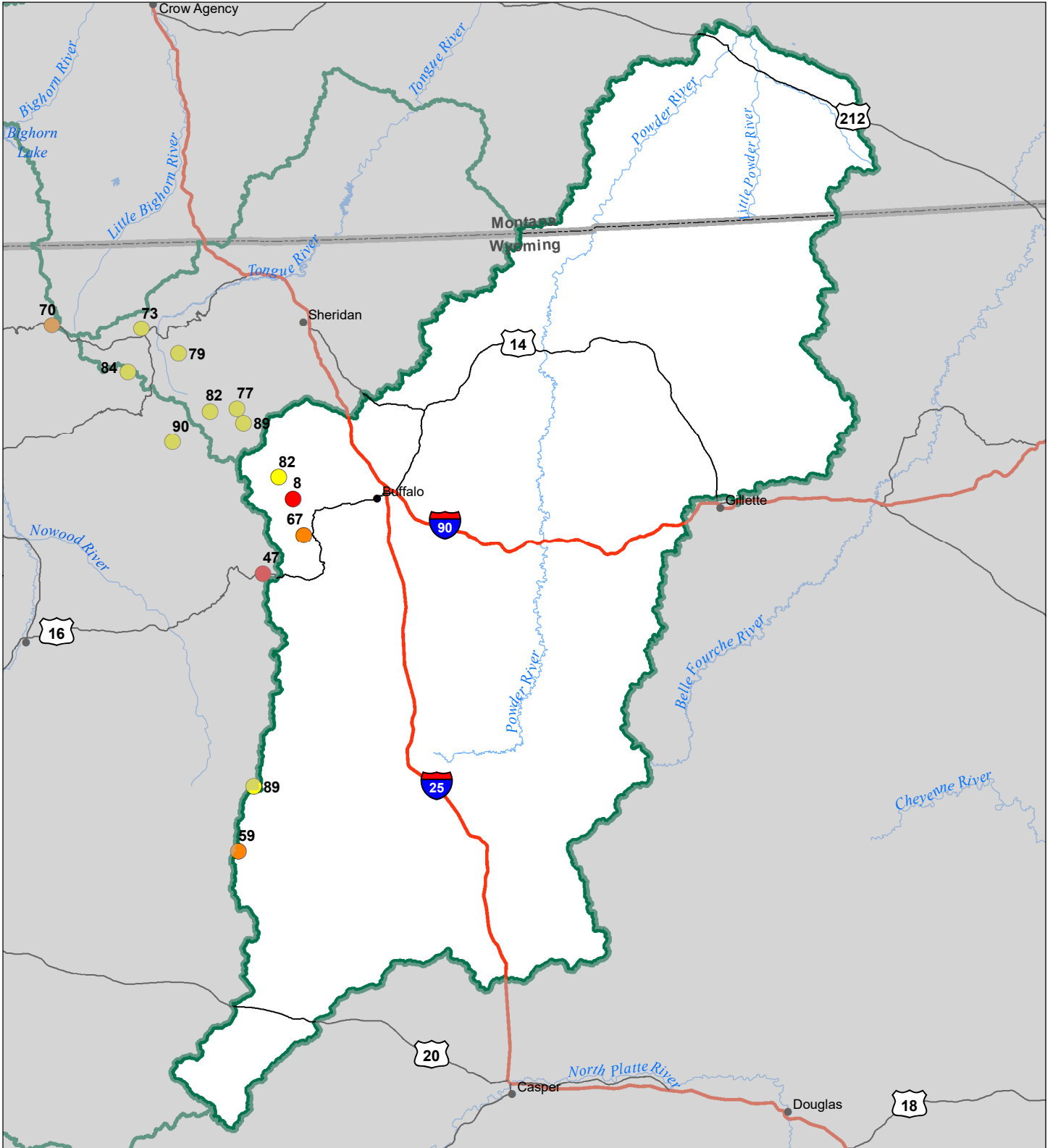
- > 150%
- 131 - 150%
- 111 - 130%
- 91 - 110%
- 71 - 90%
- 51 - 70%
- 1 - 50%
- * 0%

Snowcourse

- ⊕ > 150%
- ⊕ 131 - 150%
- ⊕ 111 - 130%
- ⊕ 91 - 110%
- ⊕ 71 - 90%
- ⊕ 51 - 70%
- ⊕ 1 - 50%
- * 0%



Powder River Basin Snow Water Equivalent Percentage of Normal May 1, 2024



Snow Water Equivalent Percent of Normal

SNOTEL

- > 150%
- 131 - 150%
- 111 - 130%
- 91 - 110%
- 71 - 90%
- 51 - 70%
- 1 - 50%
- *

Snowcourse

- ⊕ > 150%
- ⊕ 131 - 150%
- ⊕ 111 - 130%
- ⊕ 91 - 110%
- ⊕ 71 - 90%
- ⊕ 51 - 70%
- ⊕ 1 - 50%
- ⊕ *

