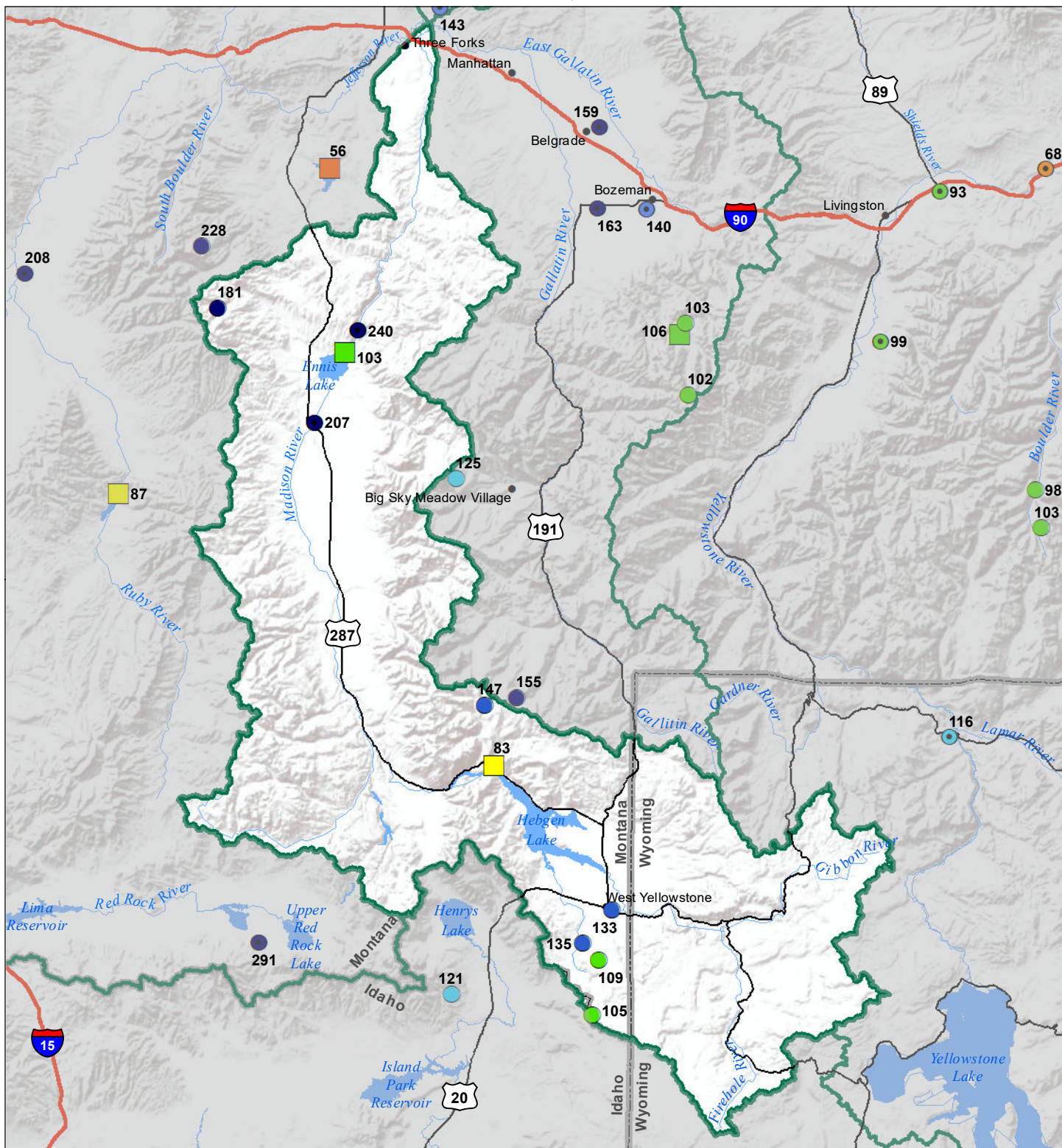


# Madison River Basin

## Water Year to Date Precipitation and Reservoir Levels Percentage of Normal

### November 1, 2021



#### Precipitation Percent of Normal

| SNOTEL       |            | COOP/ACIS    |            |
|--------------|------------|--------------|------------|
| ● > 150%     | ● 71 - 90% | ● > 150%     | ● 71 - 90% |
| ● 131 - 150% | ● 51 - 70% | ● 131 - 150% | ● 51 - 70% |
| ● 111 - 130% | ● 1 - 50%  | ● 111 - 130% | ● 1 - 50%  |
| ● 91 - 110%  |            | ● 91 - 110%  |            |

#### Reservoirs Percent of Normal

|              |
|--------------|
| ■ > 150%     |
| ■ 131 - 150% |
| ■ 111 - 130% |
| ■ 91 - 110%  |
| ■ 71 - 90%   |
| ■ 51 - 70%   |
| ■ 1 - 50%    |

