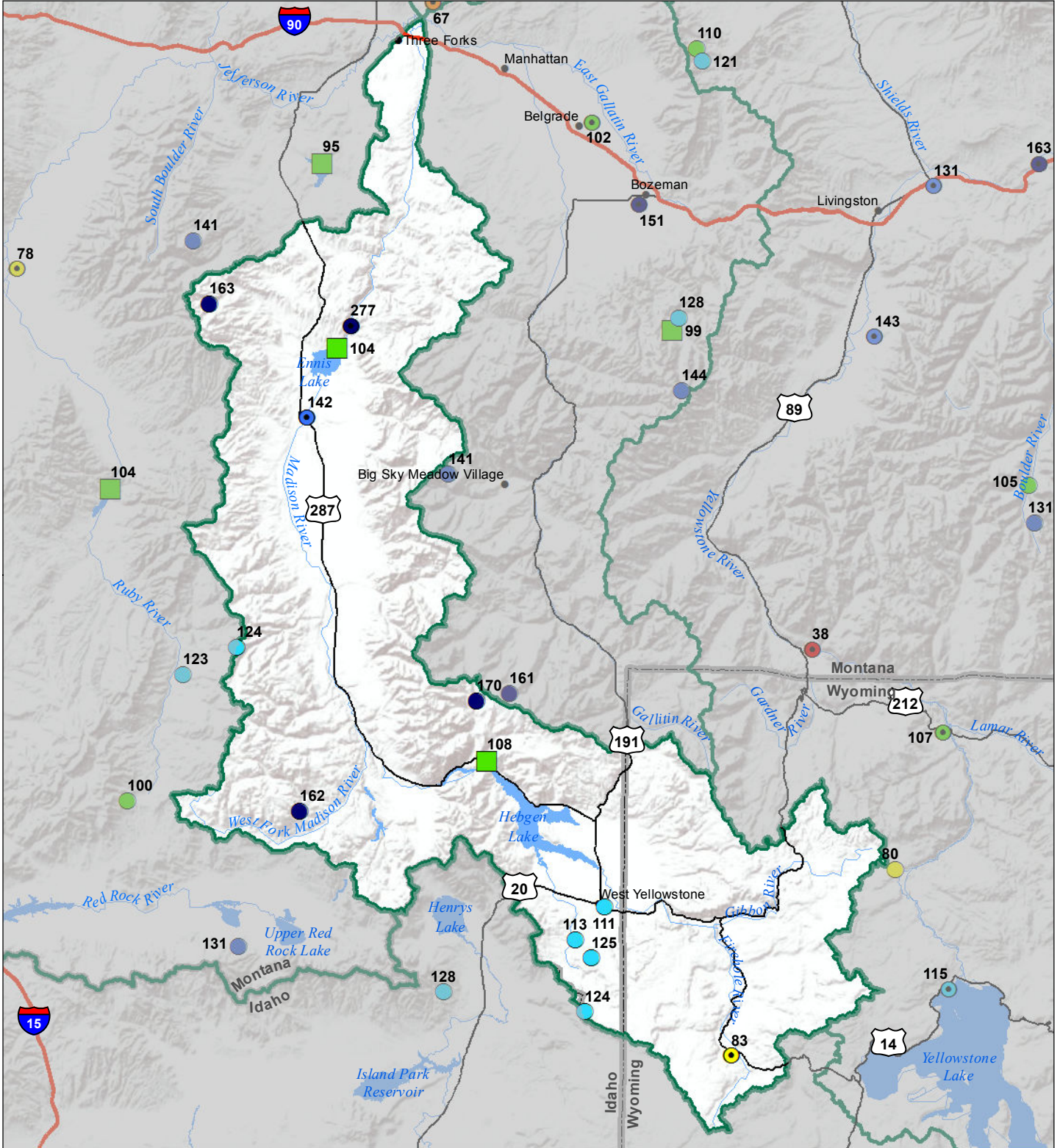


Madison River Basin Monthly Precipitation and Reservoir Levels Percentage of Normal April 1, 2016 (March 1, 2016 - April 1, 2016)



Precipitation Percent of Normal

| SNOTEL | | COOP/ACIS | |
|--------------|------------|--------------|------------|
| ● > 150% | ● 71 - 90% | ● > 150% | ● 71 - 90% |
| ● 131 - 150% | ● 51 - 70% | ● 131 - 150% | ● 51 - 70% |
| ● 111 - 130% | ● 1 - 50% | ● 111 - 130% | ● 1 - 50% |
| ● 91 - 110% | | ● 91 - 110% | |

Reservoirs Percent of Normal

| |
|--------------|
| ■ > 150% |
| ■ 131 - 150% |
| ■ 111 - 130% |
| ■ 91 - 110% |
| ■ 71 - 90% |
| ■ 51 - 70% |
| ■ 1 - 50% |

