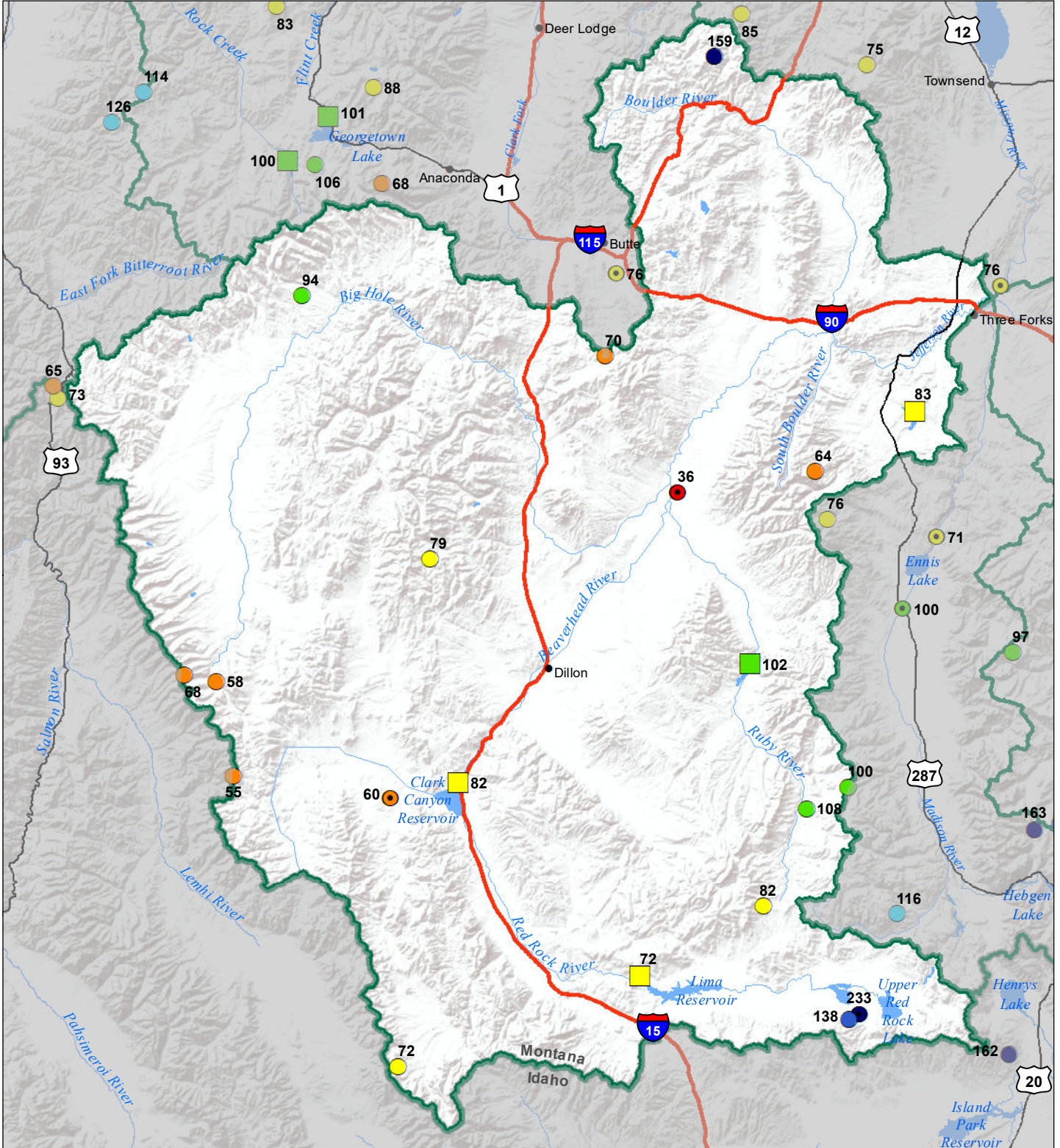


# Jefferson River Basin Monthly Precipitation and Reservoir Levels Percentage of Normal July 1, 2022 (June 1, 2022 - July 1, 2022)

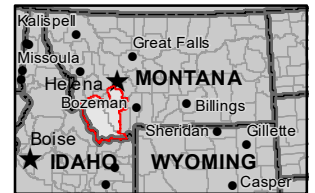


### Precipitation Percent of Normal

SNOTEL		COOP/ACIS	
● > 150%	● 71 - 90%	● > 150%	● 71 - 90%
● 131 - 150%	● 51 - 70%	● 131 - 150%	● 51 - 70%
● 111 - 130%	● 1 - 50%	● 111 - 130%	● 1 - 50%
● 91 - 110%		● 91 - 110%	

### Reservoirs Percent of Normal

■ > 150%
■ 131 - 150%
■ 111 - 130%
■ 91 - 110%
■ 71 - 90%
■ 51 - 70%
■ 1 - 50%



Montana State Library  
Natural Resource  
Information System

Data source: USDA NRCS National Water and Climate Center, Air and Water Database