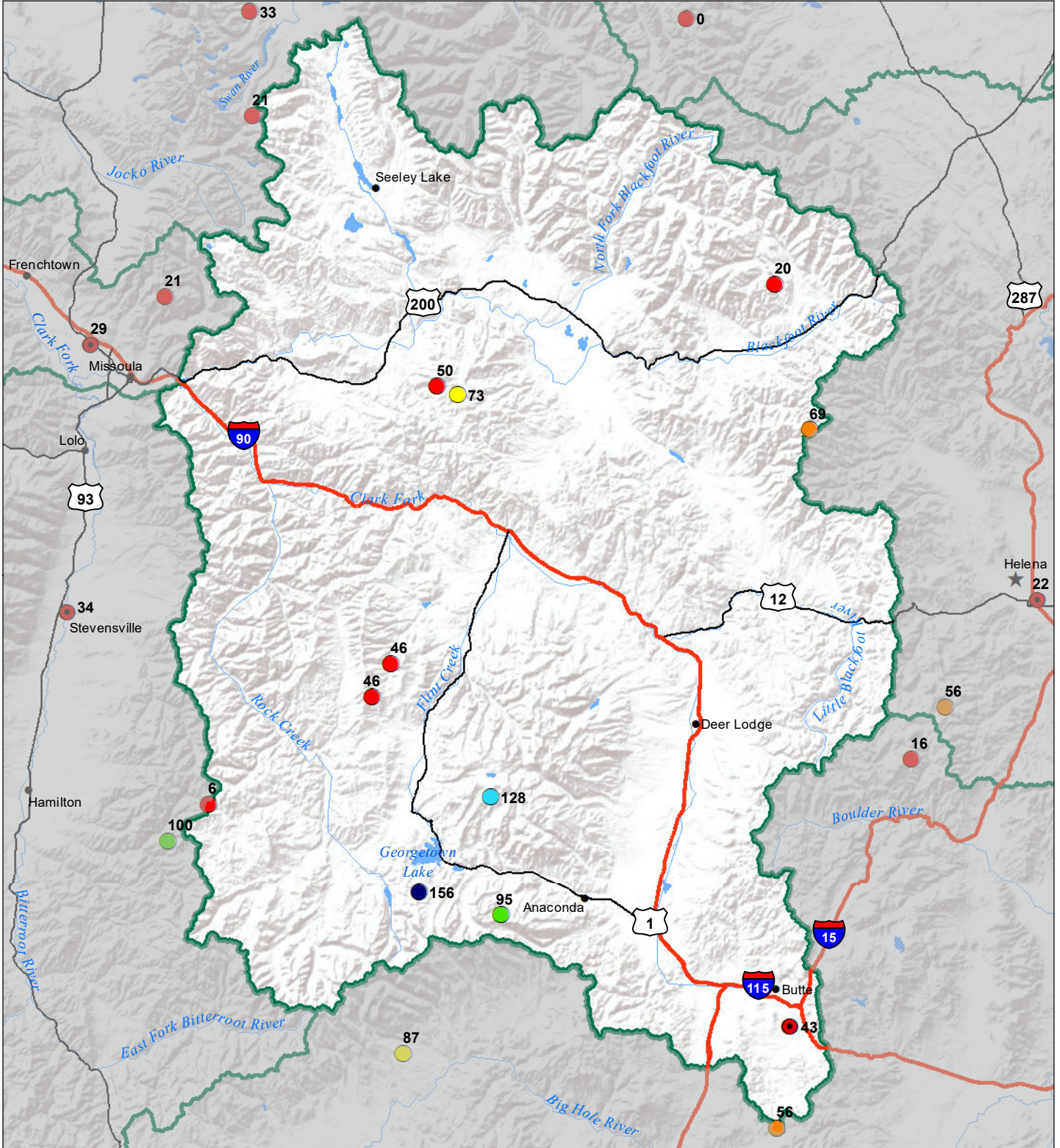


**Upper Clark Fork River Basin  
Monthly Precipitation and Reservoir Levels  
Percentage of Normal  
August 1, 2020 (July 1, 2020 - August 1, 2020)**



**Precipitation  
Percent of Normal**

**SNOTEL**

- > 150%
- 71 - 90%
- 131 - 150%
- 51 - 70%
- 111 - 130%
- 1 - 50%
- 91 - 110%

**COOP/ACIS**

- > 150%
- 71 - 90%
- 131 - 150%
- 51 - 70%
- 111 - 130%
- 1 - 50%
- 91 - 110%

**Reservoirs  
Percent of Normal**

- > 150%
- 131 - 150%
- 111 - 130%
- 91 - 110%
- 71 - 90%
- 51 - 70%
- 1 - 50%

