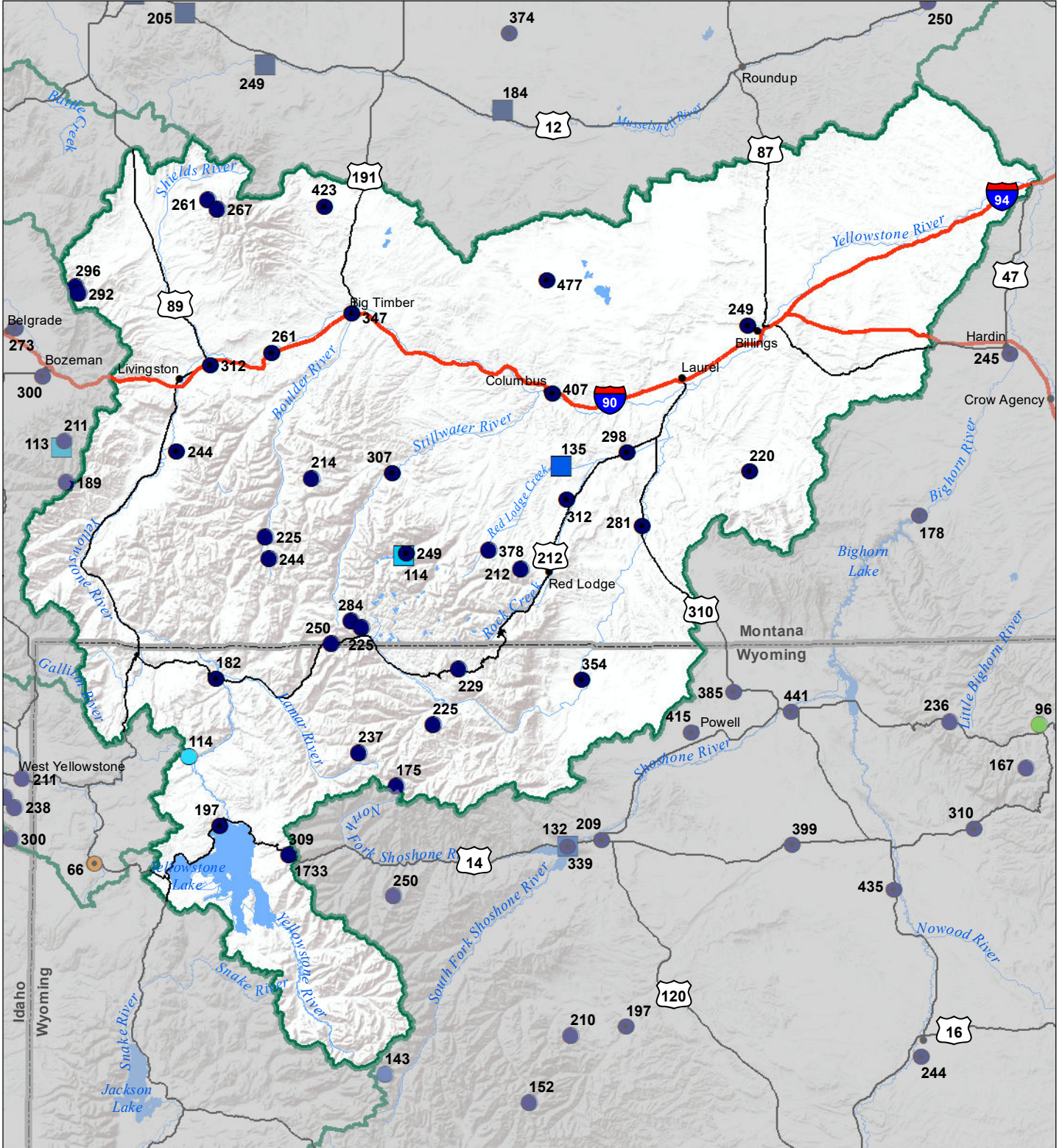


# Upper Yellowstone River Basin Monthly Precipitation and Reservoir Levels Percentage of Normal October 1, 2019 (September 1, 2019 - October 1, 2019)



## Precipitation Percent of Normal

- | SNOTEL   |  | COOP/ACIS                                      |  |
|--|--|--|--|
| <span style="color: blue;">●</span> > 150%         | <span style="color: yellow;">●</span> 71 - 90% | <span style="color: blue;">●</span> > 150%     | <span style="color: yellow;">●</span> 71 - 90% |
| <span style="color: darkblue;">●</span> 131 - 150% | <span style="color: orange;">●</span> 51 - 70% | <span style="color: blue;">●</span> 131 - 150% | <span style="color: orange;">●</span> 51 - 70% |
| <span style="color: cyan;">●</span> 111 - 130%     | <span style="color: red;">●</span> 1 - 50%     | <span style="color: cyan;">●</span> 111 - 130% | <span style="color: red;">●</span> 1 - 50%     |
| <span style="color: green;">●</span> 91 - 110%     |  | <span style="color: green;">●</span> 91 - 110% |  |

## Reservoirs Percent of Normal

- |  |
|--|
| <span style="color: darkblue;">■</span> > 150% |
| <span style="color: blue;">■</span> 131 - 150% |
| <span style="color: cyan;">■</span> 111 - 130% |
| <span style="color: green;">■</span> 91 - 110% |
| <span style="color: yellow;">■</span> 71 - 90% |
| <span style="color: orange;">■</span> 51 - 70% |
| <span style="color: red;">■</span> 1 - 50%     |

