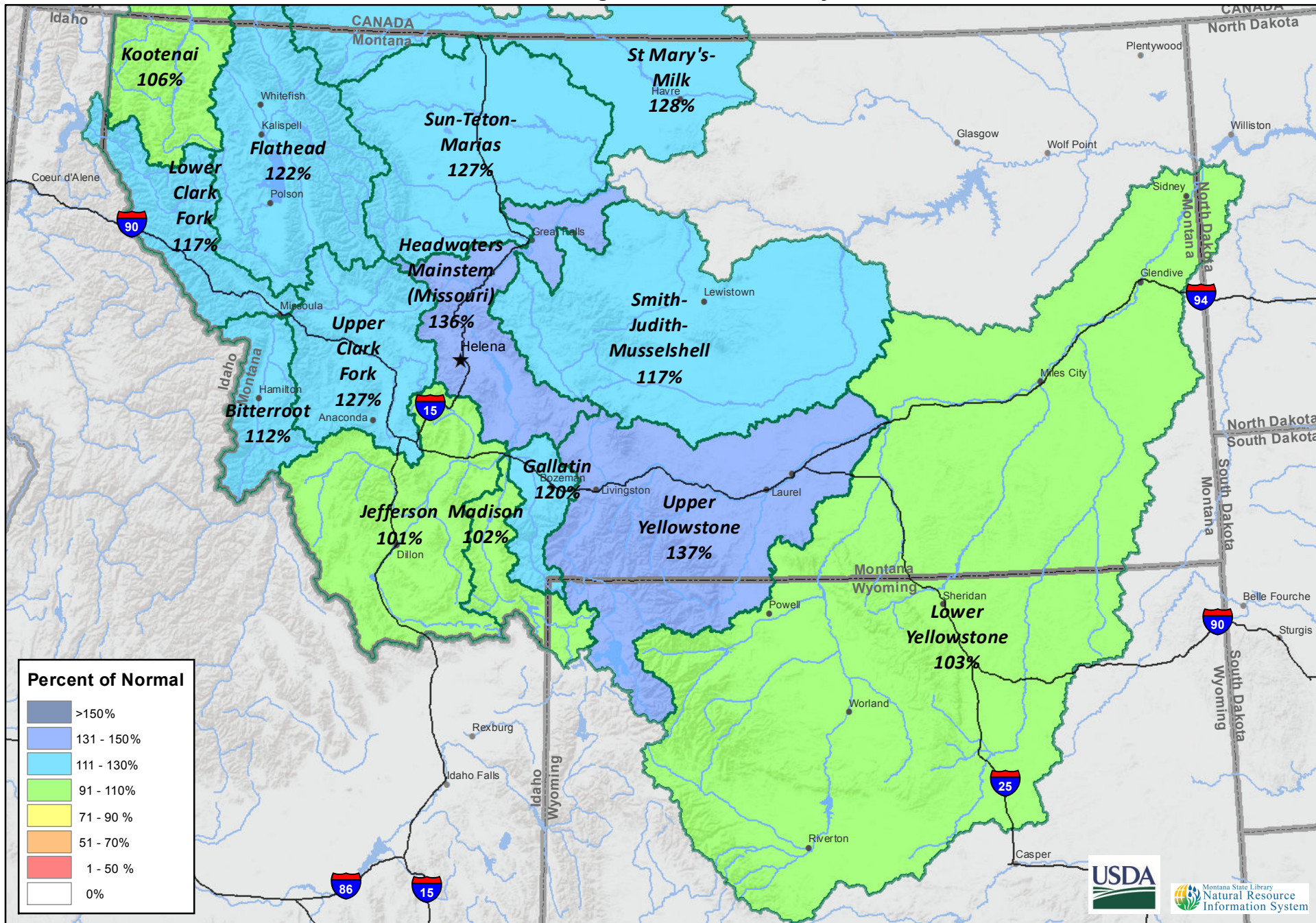


Montana Data Collection Office
 Water Year to Date Precipitation
 Basin Percentage of Normal - January 1, 2018



Percent of Normal

| |
|------------|
| >150% |
| 131 - 150% |
| 111 - 130% |
| 91 - 110% |
| 71 - 90 % |
| 51 - 70% |
| 1 - 50 % |
| 0% |