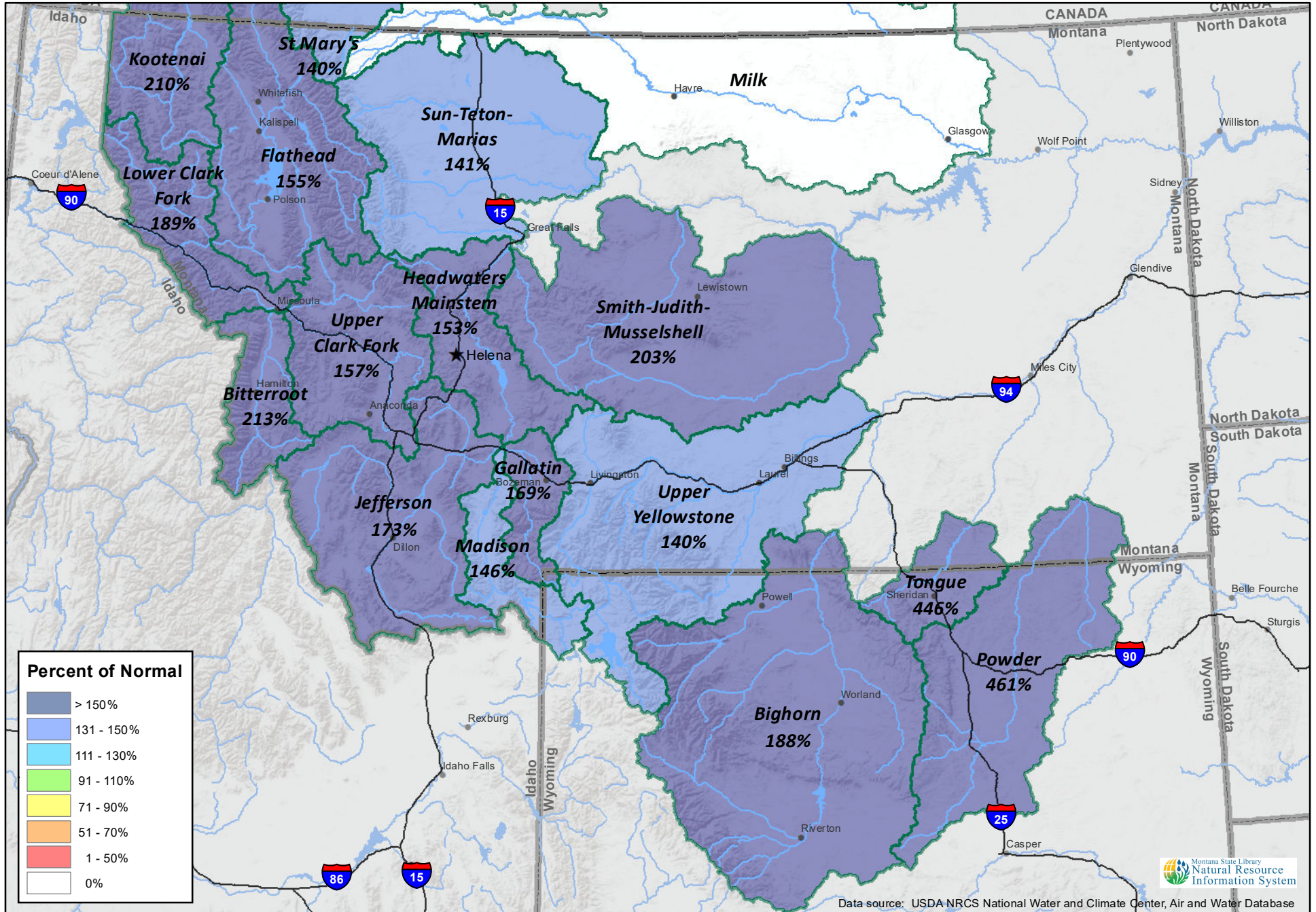


Montana Data Collection Office Current Snow Water Equivalent Basin Percentage of Normal - June 1, 2022



Note: Data includes SNOTEL and Snowcourse Measurements on June 1, 2022

*The Milk River Basin has one reporting SNOTEL station and may not be representative of conditions at lower elevations.

Data source: USDA NRCS National Water and Climate Center, Air and Water Database

