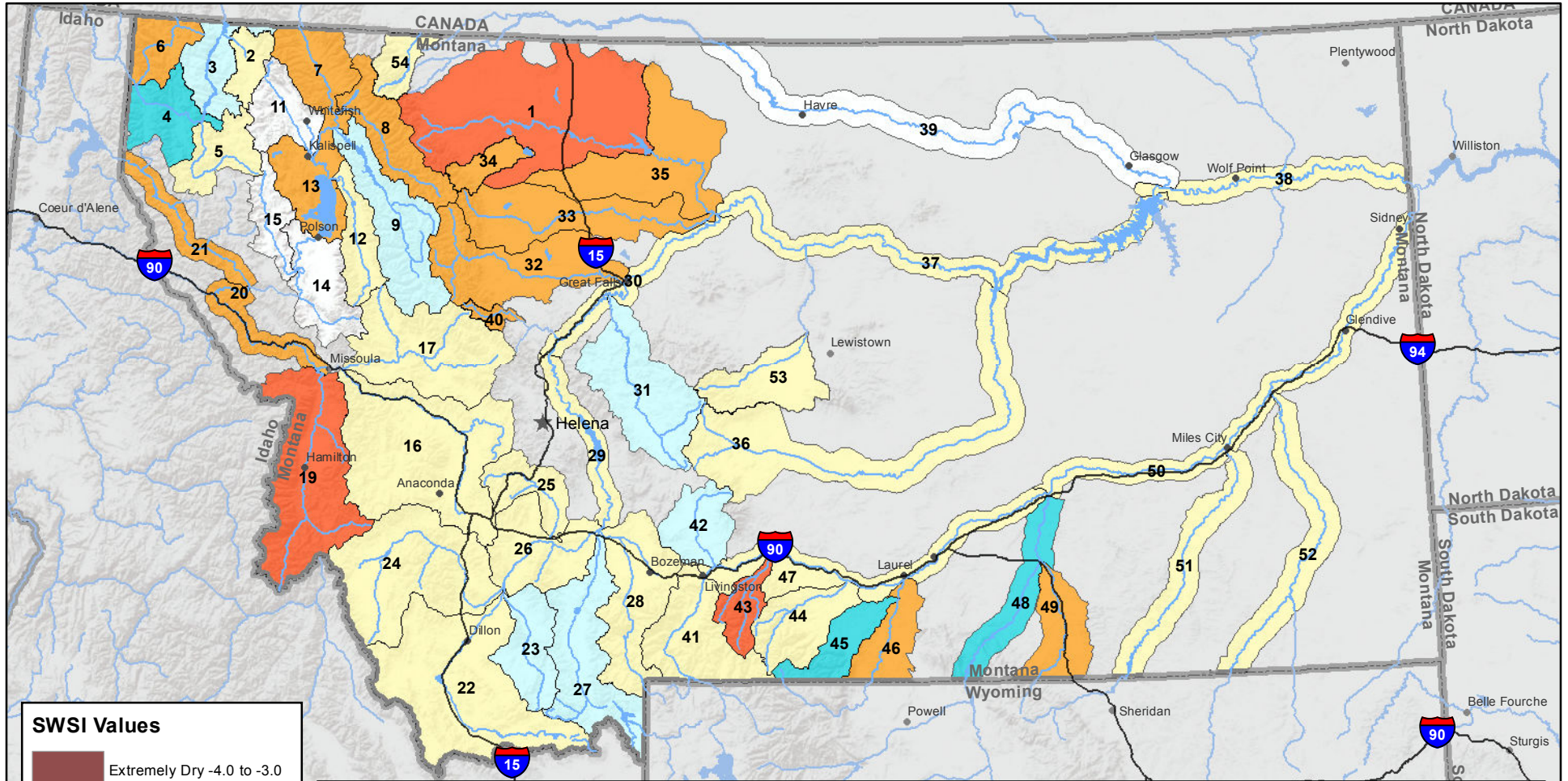
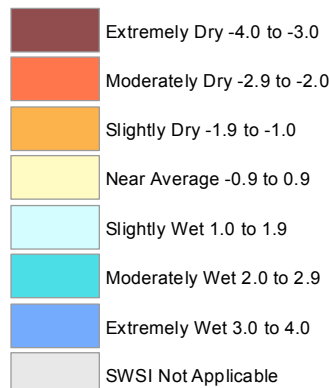


Montana Data Collection Office Surface Water Supply Index (SWSI) June 1, 2016



SWSI Values



RIVER INDEX & SWSI VALUES

1 Marias above Tiber Reservoir -2.2	16 Clark Fork above Milltown 0.4	30 Missouri below Canyon Ferry 0.4	45 Rock/Red Lodge Creeks 2.2
2 Tobacco 0.1	17 Blackfoot -0.8	31 Smith 1.4	46 Clarks Fork Yellowstone -1.3
3 Kootenai Ft. Steele to Libby Dam 1.3	18 Clark Fork above Missoula -0.4	32 Sun -1.3	47 Yellowstone above Bighorn River -0.3
4 Kootenai below Libby Dam 2.7	19 Bitterroot -2.8	33 Teton -1.6	48 Bighorn below Bighorn Lake 2.1
5 Fisher 0.6	20 Clark Fork River below Bitterroot -1.1	34 Birch/Dupuyer Creeks -1.9	49 Little Bighorn -1.5
6 Yaak -1	21 Clark Fork River below Flathead -1.1	35 Marias -1	50 Yellowstone below Bighorn 0.7
7 North Fk. Flathead -1	22 Beaverhead 0.3	36 Musselshell 0.3	51 Tongue -0.6
8 Middle Fk. Flathead -1.5	23 Ruby 1.7	37 Missouri above Fort Peck 0.6	52 Powder -0.1
9 South Fk. Flathead 1.7	24 Big Hole 0.1	38 Missouri below Fort Peck 0.4	53 Upper Judith -0.1
10 Flathead at Columbia Falls -0.3	25 Boulder (Jefferson) 0.6	40 Dearborn near Craig -1.4	54 Saint Mary 0.6
12 Swan 0.6	26 Jefferson 0.5	41 Yellowstone above Livingston -0.1	
13 Flathead at Polson -1.2	27 Madison 1.5	42 Shields 1	
14 Mission Valley	28 Gallatin -0.1	43 Boulder (Yellowstone) -2.6	
15 Little Bitterroot	29 Missouri above Canyon Ferry 0.1	44 Stillwater -0.8	

Note: Data used to generate this map are PROVISIONAL and SUBJECT TO CHANGE