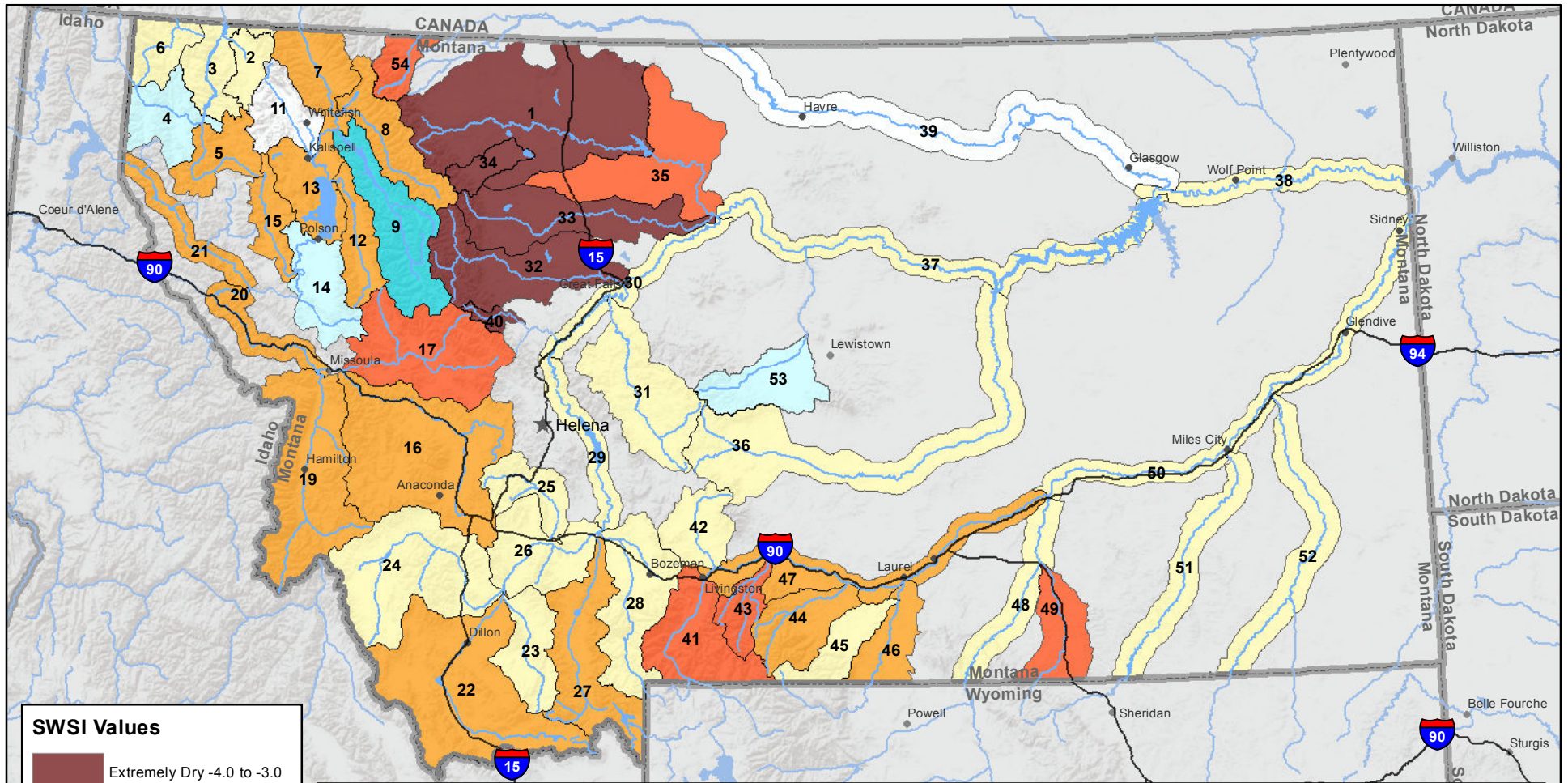
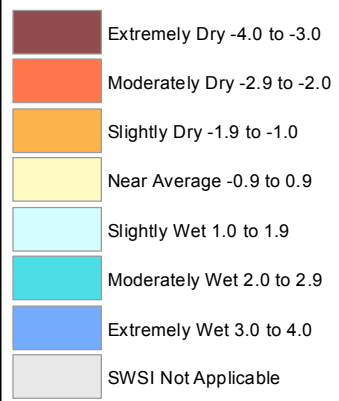


Montana Data Collection Office Surface Water Supply Index (SWSI) May 1, 2016



SWSI Values



RIVER INDEX & SWSI VALUES

1 Marias above Tiber Reservoir -3.6	16 Clark Fork above Milltown -1	30 Missouri below Canyon Ferry -0.3	45 Rock/Red Lodge Creeks -0.8
2 Tobacco -0.6	17 Blackfoot -2.6	31 Smith 0.2	46 Clarks Fork Yellowstone -1.9
3 Kootenai Ft. Steele to Libby Dam -0.8	18 Clark Fork above Missoula -2	32 Sun -3.8	47 Yellowstone above Bighorn River -1.8
4 Kootenai below Libby Dam 1	19 Bitterroot -1.3	33 Teton -3.2	48 Bighorn below Bighorn Lake 0.6
5 Fisher -1.3	20 Clark Fork River below Bitterroot -1.8	34 Birch/Dupuyer Creeks -3.3	49 Little Bighorn -2
6 Yaak -0.6	21 Clark Fork River below Flathead -1.2	35 Marias -2.8	50 Yellowstone below Bighorn -0.7
7 North Fk. Flathead -1	22 Beaverhead -1.3	36 Musselshell -0.3	51 Tongue -0.3
8 Middle Fk. Flathead -1.7	23 Ruby -0.4	37 Missouri above Fort Peck -0.2	52 Powder -0.1
9 South Fk. Flathead 2	24 Big Hole -0.4	38 Missouri below Fort Peck -0.6	53 Upper Judith 1
10 Flathead at Columbia Falls -0.3	25 Boulder (Jefferson) -0.1	40 Dearborn near Craig -3.5	54 Saint Mary -2
12 Swan -1.7	26 Jefferson 0.1	41 Yellowstone above Livingston -2	
13 Flathead at Polson -1	27 Madison -1.3	42 Shields -0.1	
14 Mission Valley 1.8	28 Gallatin -0.8	43 Boulder (Yellowstone) -2.9	
15 Little Bitterroot -1.8	29 Missouri above Canyon Ferry -0.6	44 Stillwater -1.7	

Note: Data used to generate this map are PROVISIONAL and SUBJECT TO CHANGE

