

Montana seen with lidar

Lidar for Montana

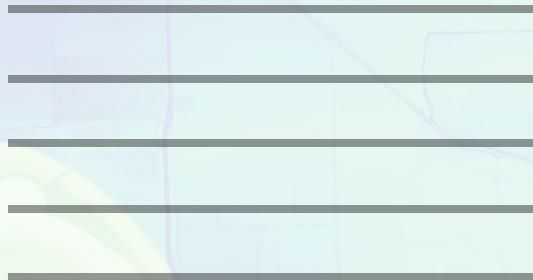
Lidar (light detection and ranging) is a remote sensing technology that uses hundreds of thousands, or even millions, of pulses of light to measure distance with high accuracy. Products derived from lidar reveal Montana landscapes in ways previously unseen. This postcard is seven inches wide. Imagine having an elevation or height value accurate to four inches! Federal, state, tribal, and local coordination efforts are underway to make statewide high-resolution elevation data a reality.

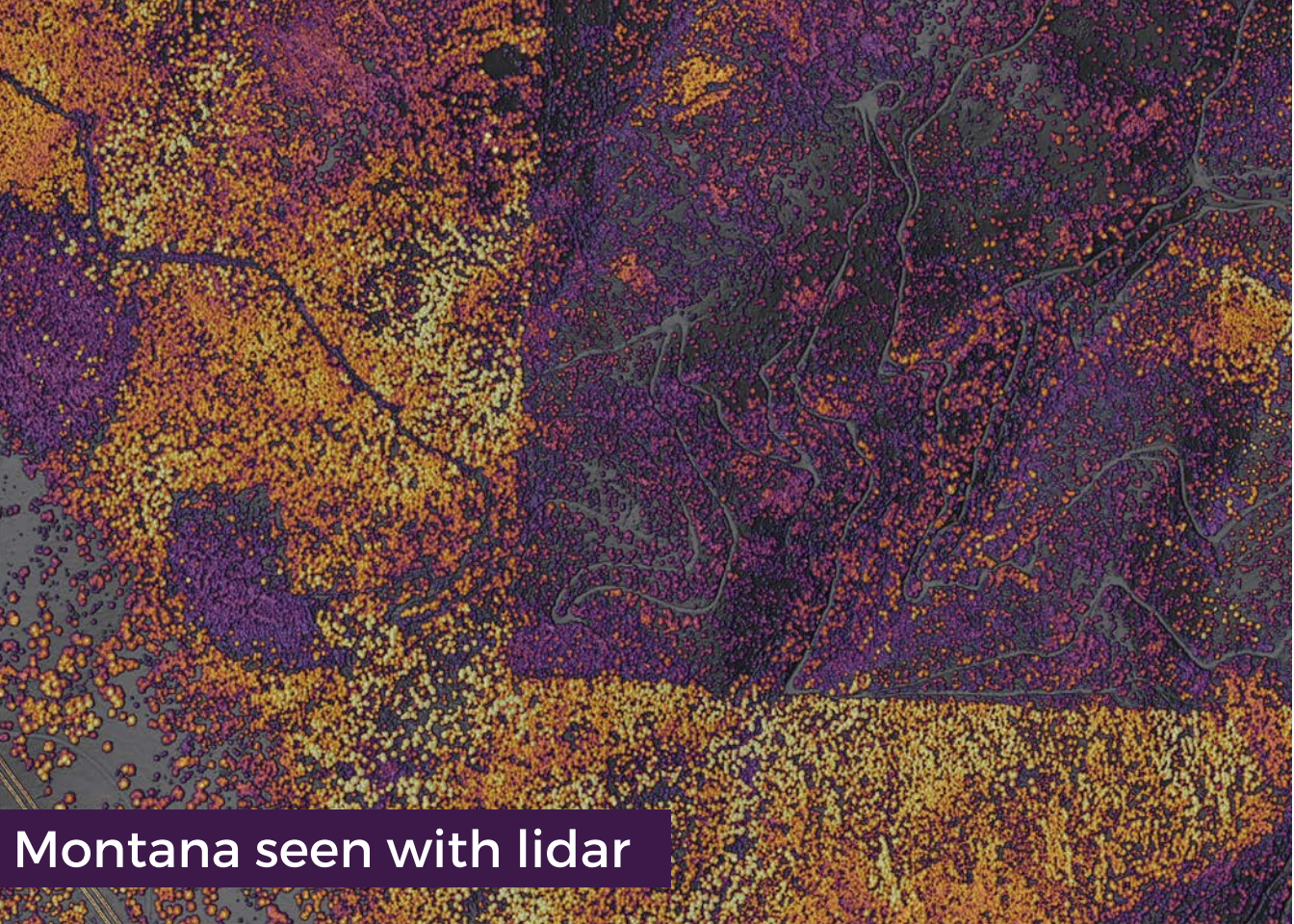
To see where lidar is available and to learn how to get involved, please visit:
<http://msl.mt.gov/gis/lidarinventory>



406-444-5354
geoinfo@mt.gov

The lidar-derived image on this postcard shows active and past channels of the Milk River, near Hinsdale, Montana.





Montana seen with lidar

Lidar for Montana

Lidar (light detection and ranging) is a remote sensing technology that uses hundreds of thousands, or even millions, of pulses of light to measure distance with high accuracy. Products derived from lidar reveal Montana landscapes in ways previously unseen. This postcard is seven inches wide. Imagine having an elevation or height value accurate to four inches! Federal, state, tribal, and local coordination efforts are underway to make statewide high-resolution elevation data a reality.

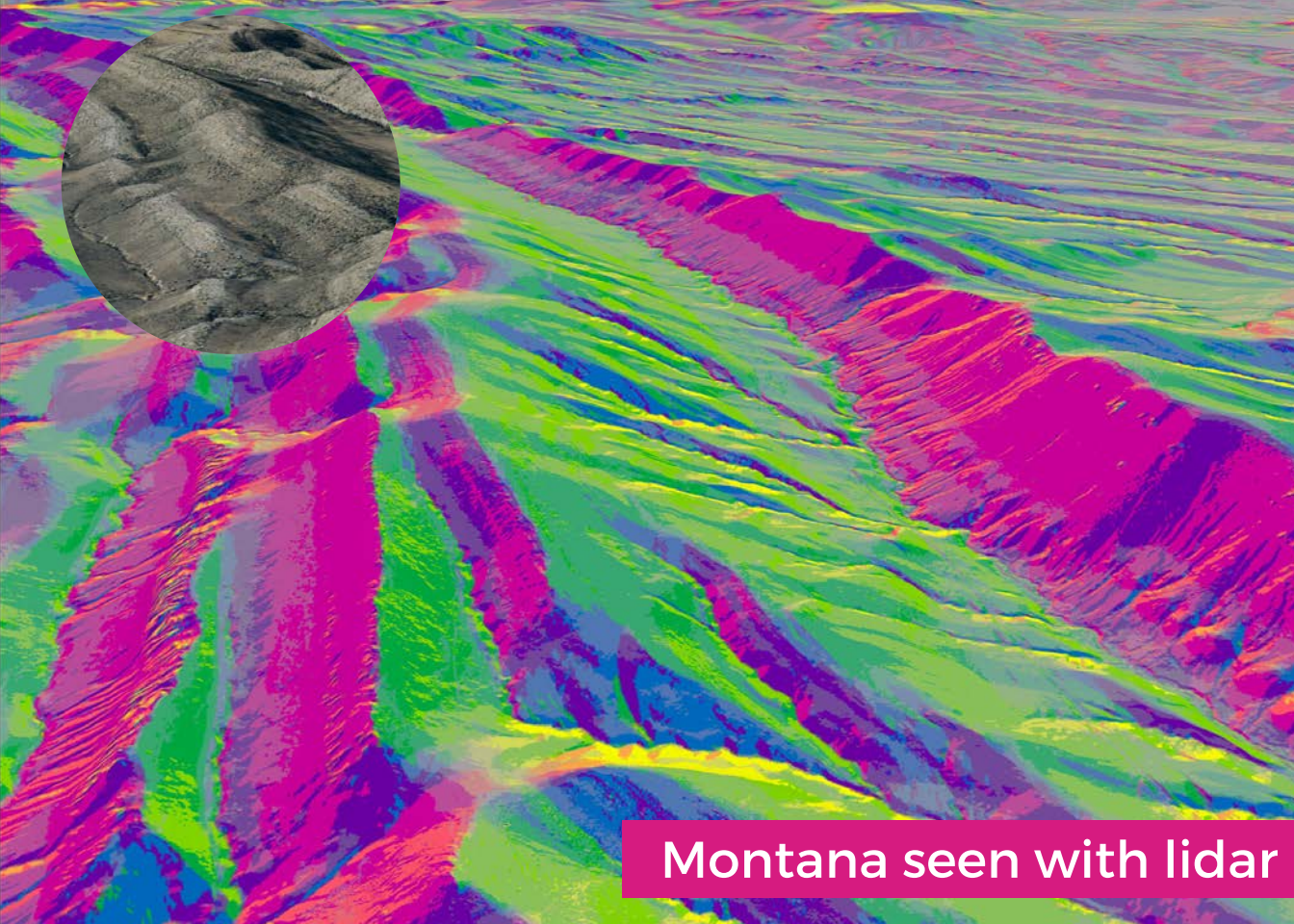
To see where lidar is available and to learn how to get involved, please visit:
<http://msl.mt.gov/gis/lidarinventory>



406-444-5354
geoinfo@mt.gov

The lidar-derived image on this postcard shows tree heights and a timber harvest near Superior, Montana.





Montana seen with lidar

Lidar for Montana



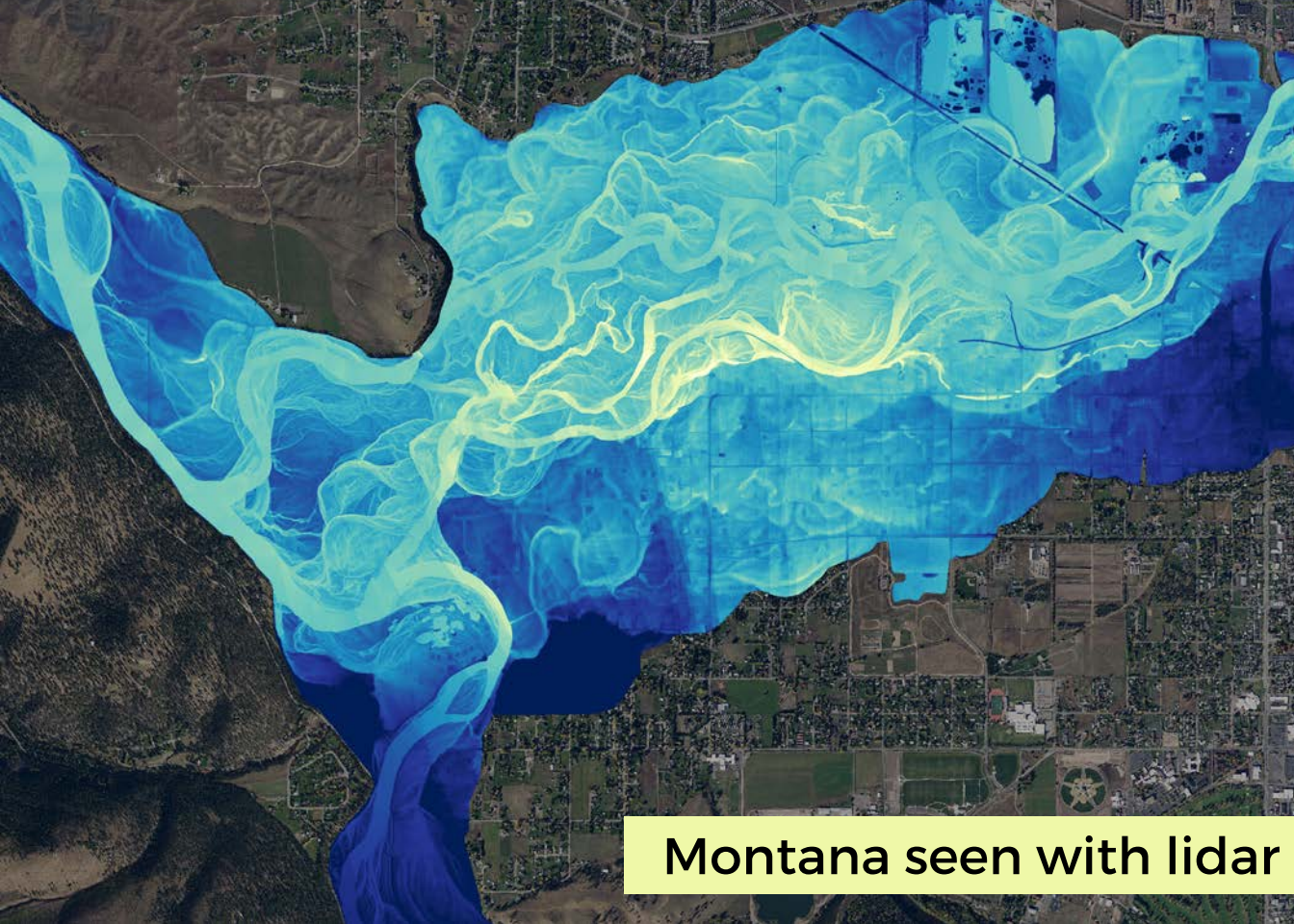
Lidar (light detection and ranging) is a remote sensing technology that uses hundreds of thousands, or even millions, of pulses of light to measure distance with high accuracy. Products derived from lidar reveal Montana landscapes in ways previously unseen. This postcard is seven inches wide. Imagine having an elevation or height value accurate to four inches! Federal, state, tribal, and local coordination efforts are underway to make statewide high-resolution elevation data a reality.

To see where lidar is available and to learn how to get involved, please visit:
<http://msl.mt.gov/gis/lidarinventory>

The lidar-derived image on this postcard shows the east and west slopes near Lewis & Clark Caverns State Park in Montana.



406-444-5354
geoinfo@mt.gov



Montana seen with lidar

Lidar for Montana

Lidar (light detection and ranging) is a remote sensing technology that uses hundreds of thousands, or even millions, of pulses of light to measure distance with high accuracy. Products derived from lidar reveal Montana landscapes in ways previously unseen. This postcard is seven inches wide. Imagine having an elevation or height value accurate to four inches! Federal, state, tribal, and local coordination efforts are underway to make statewide high-resolution elevation data a reality.

To see where lidar is available and to learn how to get involved, please visit:

<http://msl.mt.gov/gis/lidarinventory>

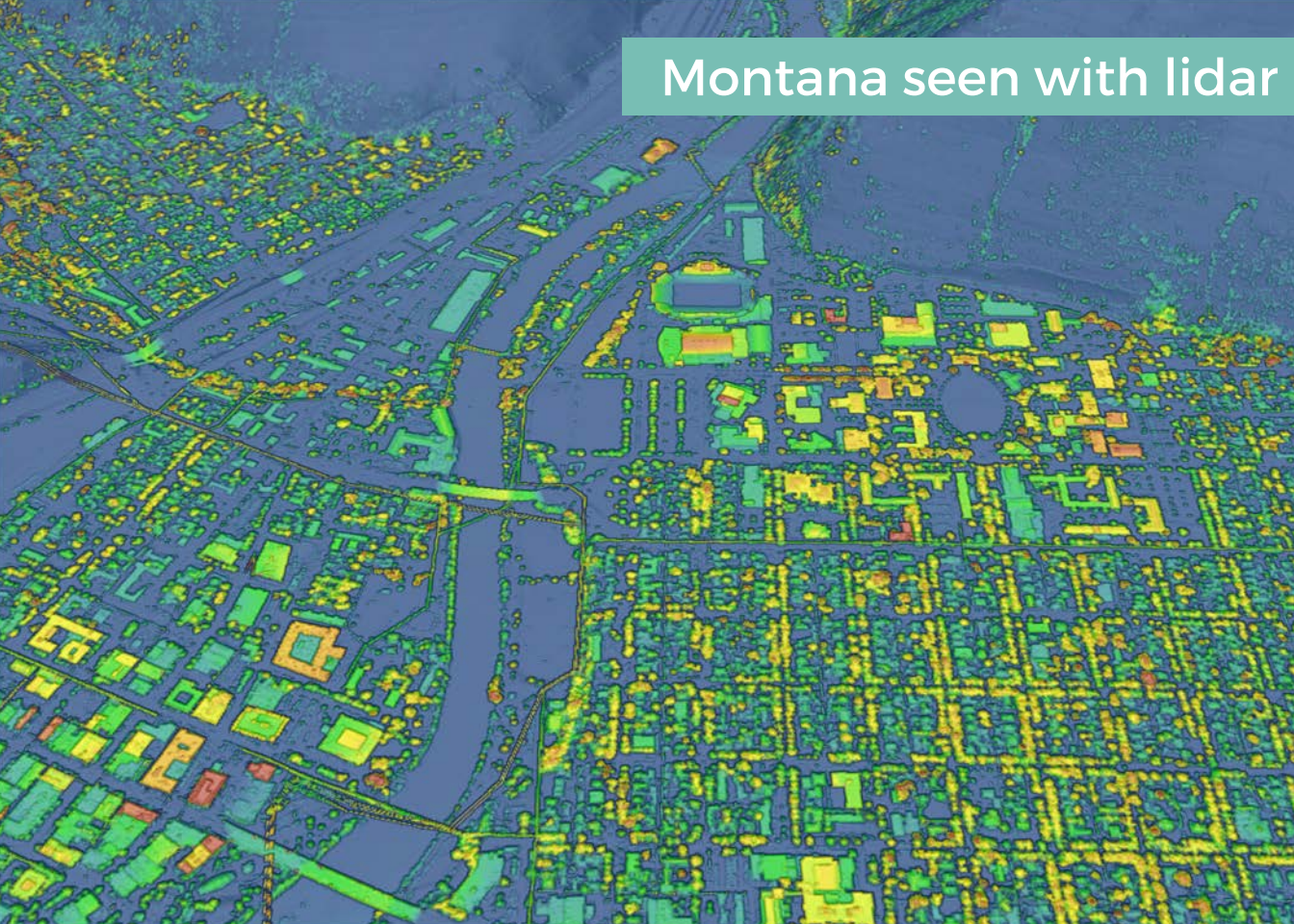


406-444-5354
geoinfo@mt.gov

The lidar-derived image on this postcard shows active and past channels of the Clark Fork River near Missoula, Montana.



Montana seen with lidar



Lidar for Montana



Lidar (light detection and ranging) is a remote sensing technology that uses hundreds of thousands, or even millions, of pulses of light to measure distance with high accuracy. Products derived from lidar reveal Montana landscapes in ways previously unseen. This postcard is seven inches wide. Imagine having an elevation or height value accurate to four inches! Federal, state, tribal, and local coordination efforts are underway to make statewide high-resolution elevation data a reality.



To see where lidar is available and to learn how to get involved, please visit:
<http://msl.mt.gov/gis/lidarinventory>



406-444-5354
geoinfo@mt.gov

The lidar-derived image on this postcard shows the height of structures in Missoula, Montana.

