




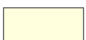
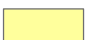



# Montana Drought Status by County - October, 2007

## Map Key

-  Continental Divide
-  Drought Impact Type

## Drought Status

October 2007

-  No Drought - Moist
  -  No Drought
  -  Slightly Dry
  -  Moderately Dry (Drought Alert)
  -  Severely Dry
  -  Extremely Dry
- } (Severe Drought)

**Drought Impact Types** - **A** = Agricultural - Soil Moisture, Range conditions  
**H** = Hydrological - Water Supplies, Streamflow, Groundwater

**Drought Alert** - Governor's Drought Advisory Committee strongly encourages local officials to convene local drought committees.

**Severe Drought** - Local officials should have local drought planning efforts underway or should reconvene the local drought committee at the earliest opportunity.

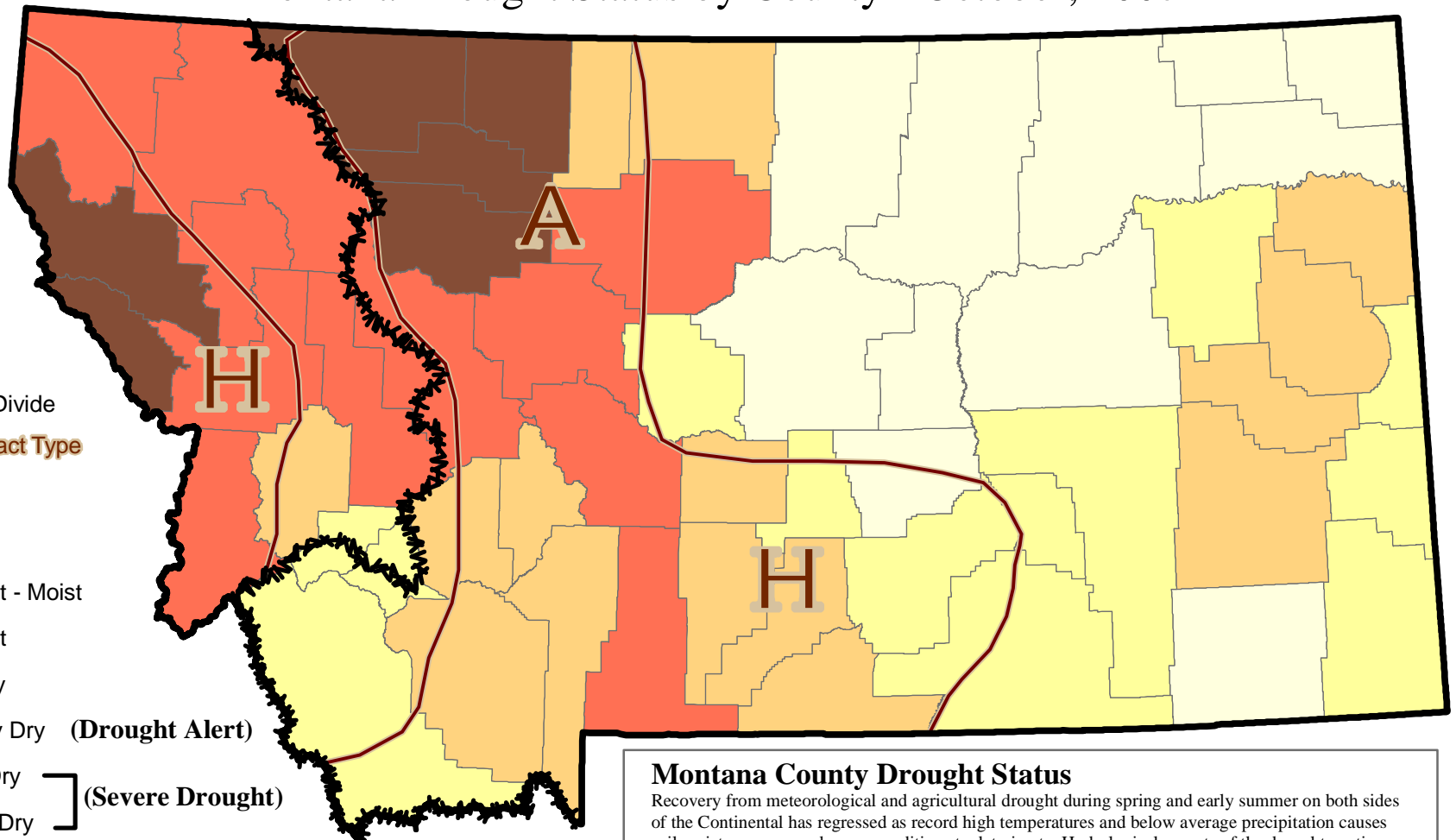
For recommended responses, see the Montana Drought Plan.



<http://nris.mt.gov/drought/>



<http://drought.mt.gov/>



## Montana County Drought Status

Recovery from meteorological and agricultural drought during spring and early summer on both sides of the Continental has regressed as record high temperatures and below average precipitation causes soil moisture, crop, and range conditions to deteriorate. Hydrological aspects of the drought continue to worsen as reservoirs are drafted heavily and streamflow approaches very low levels for a number of rivers across the state due to late formation and early melt of the mountain snowpack.

The Governor's Drought Advisory Committee assesses water supply and moisture conditions on a monthly basis to determine drought status for each county of the state. The drought status map is used primarily to promote awareness of drought and to alert Montanans to impending drought conditions so they may respond appropriately.

**Drought Alert:** Governor's Drought Advisory Committee strongly encourages watershed groups and county drought committees to convene and undertake planning for drought.

**Severe Drought:** Local officials should have local drought planning underway or should convene local drought planning at the earliest opportunity.

For information about how the drought status maps are determined or to learn more about recommended responses to drought see the Montana Drought Response Plan.  
<http://nris.state.mt.us/drought/committee/DroughtP07.pdf>