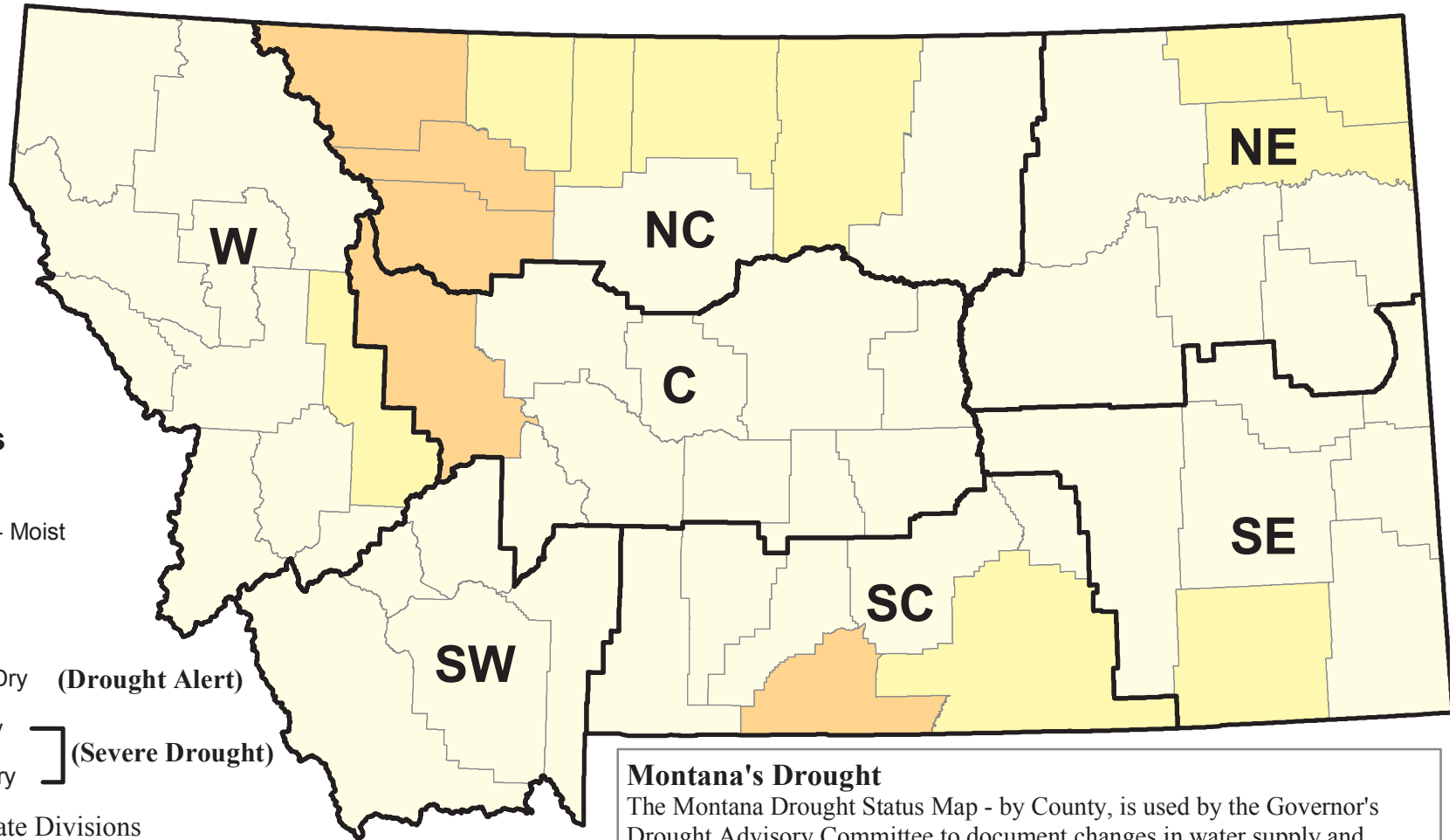


# Montana Drought Status by County - February 15, 2006



## Drought Status

February 2006

- No Drought - Moist
- No Drought
- Slightly Dry
- Moderately Dry (Drought Alert)
- Severely Dry
- Extremely Dry

(Severe Drought)

**SC** NWS Climate Divisions

### Drought Alert - Governor's Drought

Advisory Committee strongly encourages local officials to convene local drought committees.

### Severe Drought - Local officials

should have local drought planning efforts underway or should reconvene the local drought committee at the earliest opportunity.

For recommended responses, see the Drought Response Plan.

### Montana's Drought

The Montana Drought Status Map - by County, is used by the Governor's Drought Advisory Committee to document changes in water supply and moisture conditions on a monthly basis and to alert counties so timely responses are possible. The descriptive categories of the Drought Status map correspond with known and anticipated levels of economic hardship on water uses and moisture dependence due to drought. Recovery from up to six consecutive years of severe drought conditions continues across large areas of Montana. High temperatures, declining streamflow, and wildfire are common in any given summer in Montana and do not necessarily indicate the presence of drought.

For more information regarding the determination of the drought status or the activities of the Drought Advisory Committee visit:

<http://www.dnrc.state.mt.us/Drought/Index.html>



Montana State Library - 1515 East 6th Avenue  
Helena, MT - (406) 444-5358 • [nris.state.mt.us](http://nris.state.mt.us)

<http://nris.state.mt.us/drought/>