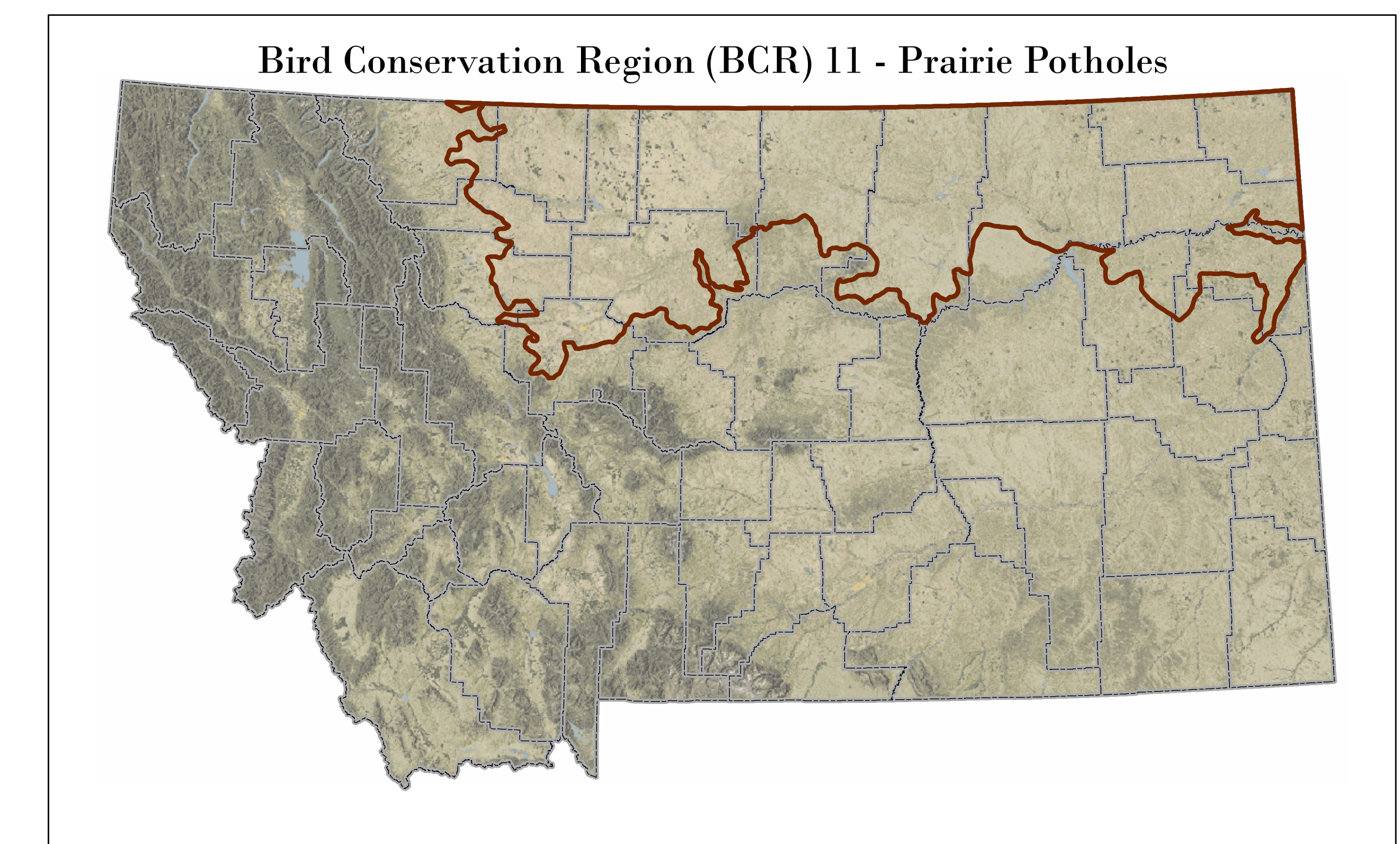


## MSDI- Land Cover 2010

- |  |   |   |
|--|---|---|
| Active and Stabilized Dune               | Great Plains Open Freshwater Depression Wetland                       | Recently burned grassland   |
| Alpine-Montane Wet Meadow                | Great Plains Ponderosa Pine Woodland and Savanna                      | Rocky Mountain Cliff, Canyon and Massive Bedrock                      |
| Aspen and Mixed Conifer Forest           | Great Plains Prairie Pothole  | Rocky Mountain Dry-Mesic Montane Mixed Conifer Forest                 |
| Aspen Forest and Woodland                | Great Plains Riparian   | Rocky Mountain Foothill Limber Pine-Juniper Woodland                  |
| Big Sagebrush Steppe                     | Great Plains Saline Depression Wetland                                | Rocky Mountain Foothill Woodland-Steppe Transition                    |
| Cultivated Crops                         | Great Plains Sand Prairie   | Rocky Mountain Lower Montane, Foothill, and Valley Grassland          |
| Developed, Low Intensity                 | Great Plains Shrubland  | Rocky Mountain Lower Montane-Foothill Riparian Woodland and Shrubland |
| Developed, Medium Intensity              | Great Plains Wooded Draw and Ravine                                   | Rocky Mountain Montane Douglas-fir Forest and Woodland                |
| Developed, Open Space                    | Introduced Upland Vegetation - Annual and Biennial Forbland           | Rocky Mountain Montane-Foothill Deciduous Shrubland                   |
| Emergent Marsh                           | Introduced Upland Vegetation - Perennial Grassland and Forbland       | Rocky Mountain Ponderosa Pine Woodland and Savanna                    |
| Greasewood Flat                          | Mat Saltbush Shrubland  | Rocky Mountain Poor Site Lodgepole Pine Forest                        |
| Great Plains Badlands                    | Montane Sagebrush Steppe  | Rocky Mountain Subalpine-Montane Mesic Meadow                         |
| Great Plains Cliff and Outcrop           | Northern Rocky Mountain Lower Montane Riparian Woodland and Shrubland | Rocky Mountain Subalpine-Montane Riparian Shrubland                   |
| Great Plains Closed Depressional Wetland | Open Water  | Rocky Mountain Wooded Vernal Pool                                     |
| Great Plains Floodplain                  | Pasture/Hay   |   |
| Great Plains Mixedgrass Prairie          | Recently burned forest  |   |

This statewide 30-meter grid of landcover/landuse was generated in the context of Regional Gap Analysis (ReGap) and aims at seamlessly mapping the distribution of land cover and land use classes nationwide. Mapped regionally with four other states comprising Northwest ReGap (Idaho, Oregon, Washington and Wyoming), the Montana landcover grid was clipped to the state borders and is receiving state-specific updates. ReGap landcover mapping was done across state boundaries on an ecoregional basis using MRLC map zones and a modeling approach in which CART models were applied to Landsat ETM+ scenes from ca. 2000. The nationwide classification uses NatureServe's Ecological Systems, 58 of which were mapped in Montana, in addition to 19 other landcover classes (representing agriculture, urban development, introduced species, burned vegetation, timber harvest, water, and geysers). State-specific modifications were conducted by MTNHP to correct some misclassification errors, and additional updates will take place to make the grid as accurate as possible.



This data should be used for planning purposes only. This data set is provided "as-is" without warranty of any kind. The NRCS makes no representations or warranties whatsoever with respect to the accuracy or completeness of this data set and assumes no responsibility for the suitability of this data set for a particular purpose; and NRCS will not be liable for any damages incurred as a result of errors in this data set.

