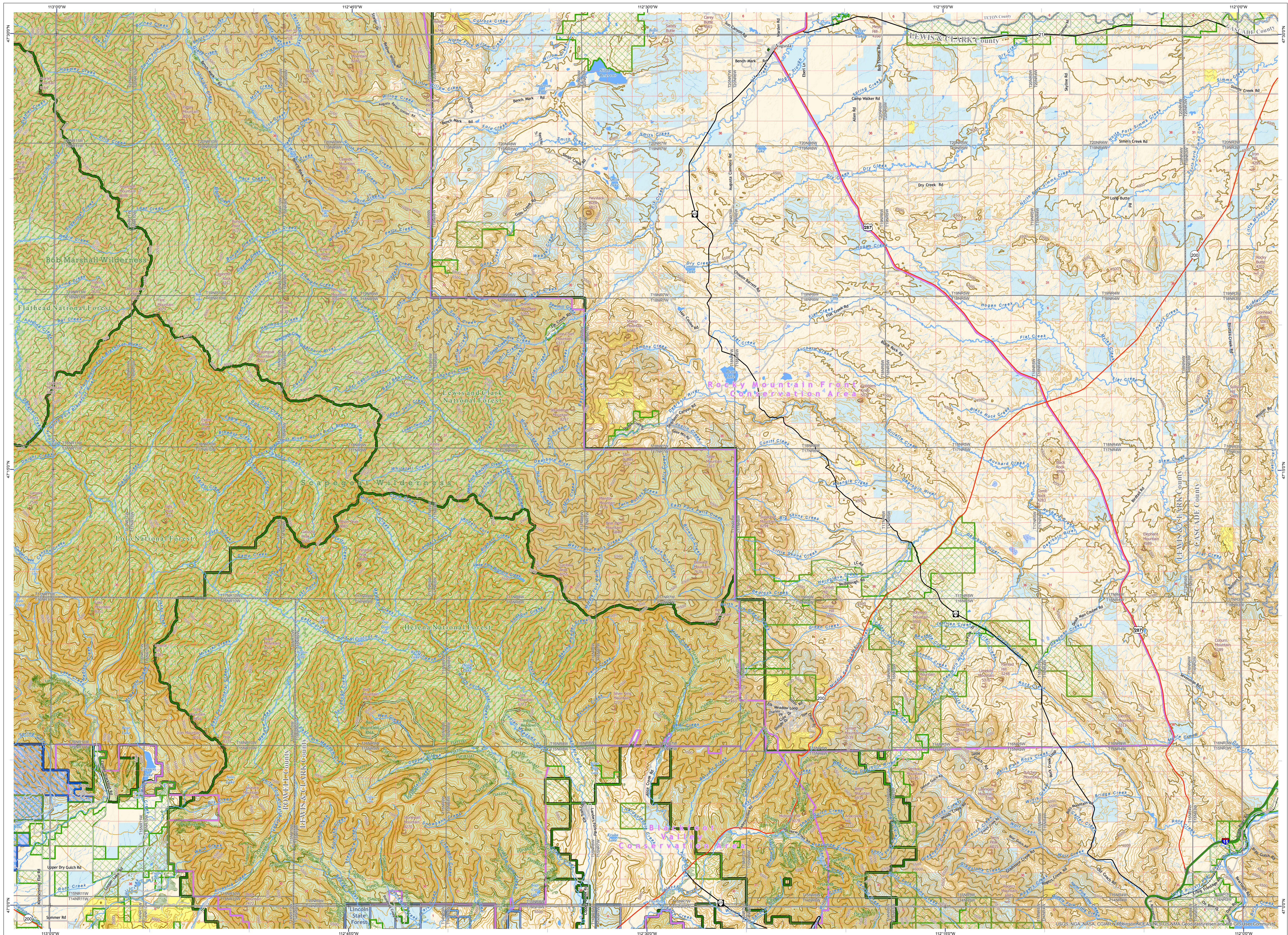


Dearborn River Quadrangle - 47112a Montana Public Land & Management Map

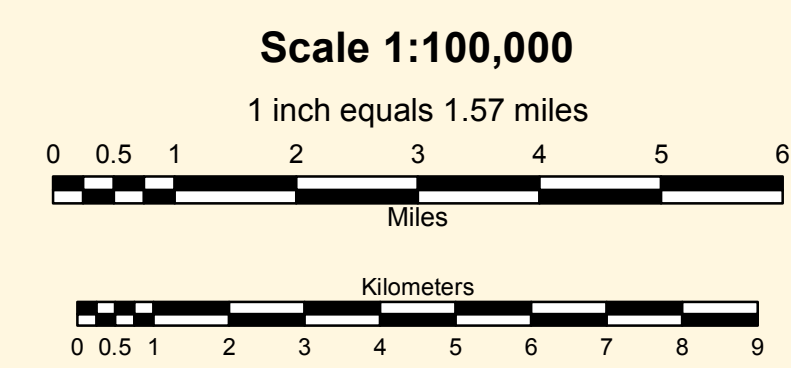


Public Ownership on this Map

US Bureau of Land Management	MT Dept of Transportation
US Forest Service	Other State of Montana
MT Fish Wildlife & Parks	Local Government
MT State Trust Lands	

Management Areas on this Map

Conservation Easement	Montana Fish Wildlife & Parks, Wildlife Management Area
Montana State Forest	USFWS Wildlife Management Area
USFWS National Forest	USFS Natural Area
USFS Natural Area	USFS Wilderness



Notice: This map is not intended as a legal depiction of public or private land boundaries.

Montana Public Ownership and Management Types, not necessarily present on this map

US Bureau of Land Management	MT Fish Wildlife & Parks	Conservation Easement	BLM Wild & Scenic River
US Fish and Wildlife Service	MT State Trust Lands	Montana Fish Wildlife & Parks, State Park	BLM Wilderness Area
US Forest Service	MT Dept of Corrections	Montana Fish Wildlife & Parks, Wildlife Management Area	BLM Wilderness Study Area
US Dept of Agriculture	MT Dept of Transportation	Montana State Forest	USFS National Forest
National Park Service	MT Dept of Natural Resources	USFWS Fish Tech Center	USFS Natural Area
US Army Corps of Engineers	Montana University System	National Fish Hatchery	USFS Wild and Scenic River
US Bureau of Reclamation	Other State of Montana	USFWS National Wildlife Refuge	USFS Wilderness
US Dept of Defense	Local Government	Wildlife Management Area	
		USFWS Wilderness	

CAUTION:

- Not all legend items may appear on this map.
- Some Public Land data types were symbolized together by broad government categories for display on this map.
- Land management features shown on this map are not intended as a legal depiction of public or private surface and ownership boundaries and should not be used in place of a survey conducted by a licensed land surveyor.
- Public ownership of land does not imply public access. Not all public parcels or roads shown on this map are open to the public. Inquire locally to learn if you can enter certain land parcels or drive on certain road. **Ask first!**
- Map features shown, including conservation easements AND ROADS, do not imply public access to any lands.

MAP DISCLAIMER:
The Montana State Library Geographic Information Services provides this product/service for informational purposes only. The Library did not produce it for, nor is it suitable for legal, engineering, or surveying purposes. Consumers of this information should review or consult the primary data and information sources to ascertain the viability of the information for their purposes. The Library provides these data in good faith but does not represent or warrant its accuracy, adequacy, or completeness. In no event shall the Library be liable for any incorrect results or analysis, any direct, indirect, special, or consequential damages to any party, or any lost profits arising out of or in connection with the use or the inability to use the data or the services provided. The Library makes these data and services available as a convenience to the public, and for no other purpose. The Library reserves the right to change or revise published data and/or services at any time.

For questions about the data displayed here or to report errors, please contact the Montana State Library at: 406-444-5354 or geoinfo@mt.gov.

Montana Public Land Map Series Index

47110a	47110b	47110c	47110d	47110e	47110f	47110g	47110h	47110i	47110j	47110k	47110l	47110m	47110n	47110o	47110p	47110q	47110r	47110s	47110t	47110u	47110v	47110w	47110x	47110y	47110z
47111a	47111b	47111c	47111d	47111e	47111f	47111g	47111h	47111i	47111j	47111k	47111l	47111m	47111n	47111o	47111p	47111q	47111r	47111s	47111t	47111u	47111v	47111w	47111x	47111y	47111z
47112a	47112b	47112c	47112d	47112e	47112f	47112g	47112h	47112i	47112j	47112k	47112l	47112m	47112n	47112o	47112p	47112q	47112r	47112s	47112t	47112u	47112v	47112w	47112x	47112y	47112z
47113a	47113b	47113c	47113d	47113e	47113f	47113g	47113h	47113i	47113j	47113k	47113l	47113m	47113n	47113o	47113p	47113q	47113r	47113s	47113t	47113u	47113v	47113w	47113x	47113y	47113z