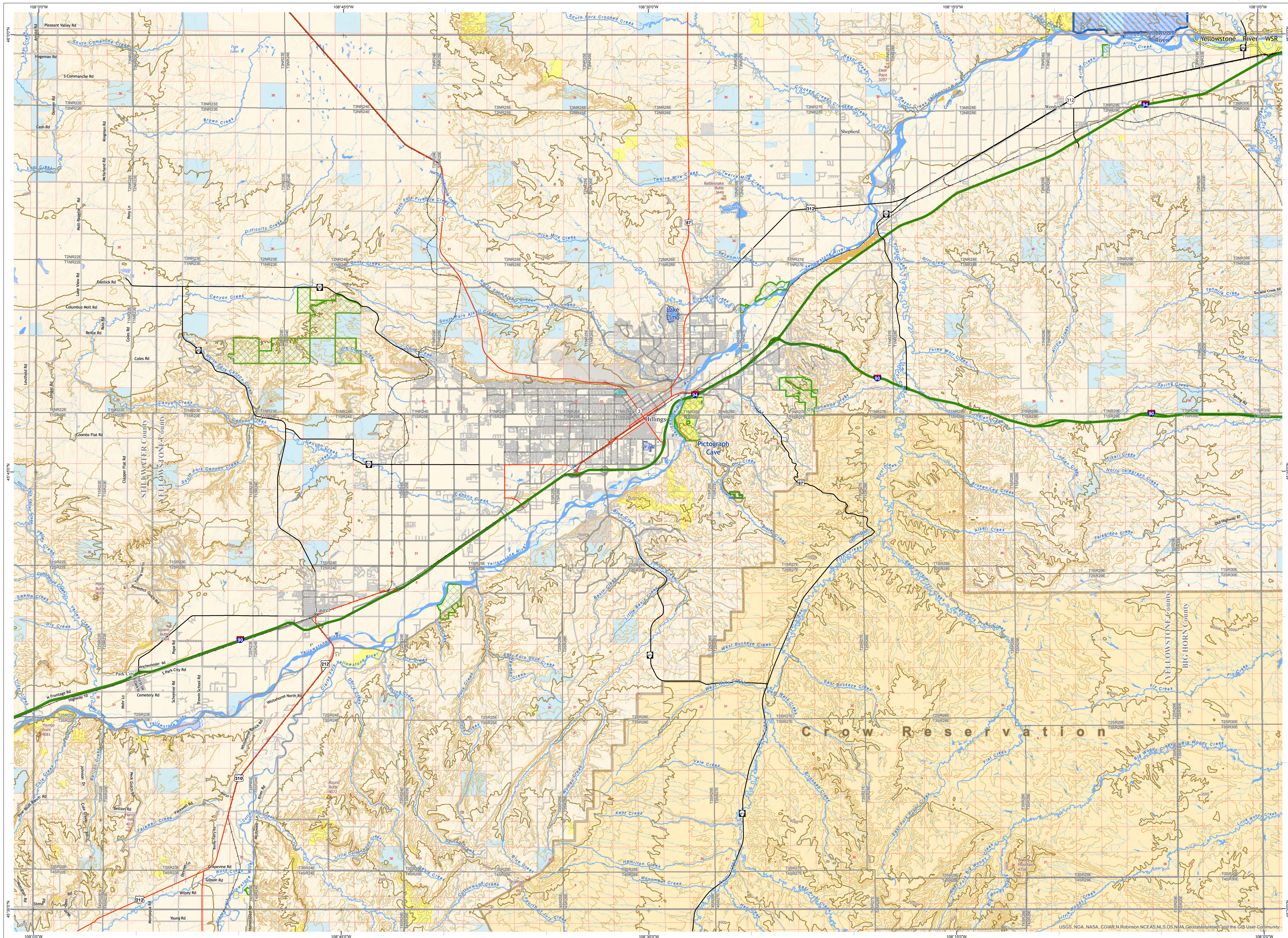


# Billings Quadrangle - 45108b Montana Public Land & Management Map



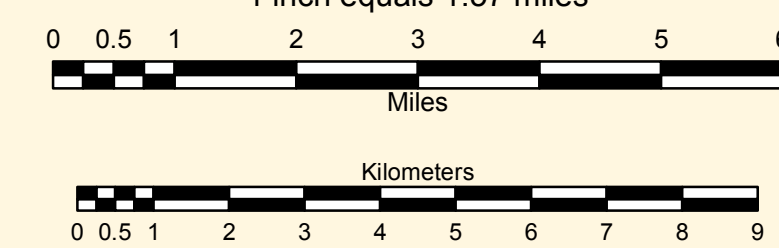
**Public Ownership on this Map**

US Bureau of Land Management	MT Dept of Transportation
US Bureau of Reclamation	Montana University System
MT Fish Wildlife & Parks	Other State of Montana
MT State Trust Lands	Local Government

**Management Areas on this Map**

Conservation Easement
Montana Fish Wildlife & Parks, State Park
Montana Fish Wildlife & Parks, Wildlife Management Area
BLM Wild & Scenic River

Scale 1:100,000  
1 inch equals 1.57 miles



**Notice: This map is not intended as a legal depiction of public or private land boundaries.**

**Montana Public Ownership and Management Types, not necessarily present on this map**

US Bureau of Land Management	MT Fish Wildlife & Parks	Conservation Easement	BLM Wild & Scenic River
US Fish and Wildlife Service	MT State Trust Lands	Montana Fish Wildlife & Parks, State Park	BLM Wilderness Area
US Forest Service	MT Dept of Corrections	Montana Fish Wildlife & Parks, Wildlife Management Area	BLM - Wilderness Study Area
US Dept of Agriculture	MT Dept of Transportation	Montana State Forest	USFS National Forest
National Park Service	MT Dept Natural Resources	State Forest	USFS National Area
US Army Corps of Engineers	Montana University System	USFWS Fish Tech. Center	USFS Wild and Scenic River
US Bureau of Reclamation	Other State of Montana	National Fish Hatchery	USFS
US Dept of Defense	Local Government	USFWS Wildlife Refuge	USFS Wilderness
		Wildlife Management Area	
		Wilderness	

**CAUTION:**

- Not all legend items may appear on this map.
- Some Public Land data types were symbolized together by broad government categories for display on this map.
- Land management features shown on this map are not intended as a legal depiction of public or private surface and ownership boundaries and should not be used in place of a survey conducted by a licensed land surveyor.
- Public ownership of land does not imply public access. Not all public parcels or roads shown on this map are open to the public. Inquire locally to learn if you can enter certain land parcels or drive on certain road. **Ask first!**
- Map features shown, including conservation easements AND ROADS, do not imply public access to any lands.

**MAP DISCLAIMER:**  
The Montana State Library Geographic Information Services provides this product/service for informational purposes only. The Library did not produce it for, nor is it suitable for legal, engineering, or surveying purposes. Consumers of this information should review or consult the primary data and information sources to ascertain the viability of the information for their purposes. The Library provides these data in good faith but does not represent or warrant its accuracy, adequacy, or completeness. In no event shall the Library be liable for any incorrect results or analysis, any direct, indirect, special, or consequential damages to any party, or any lost profits arising out of or in connection with the use or the inability to use the data or the services provided. The Library makes these data and services available as a convenience to the public, and for no other purpose. The Library reserves the right to change or revise published data and/or services at any time.

For questions about the data displayed here or to report errors, please contact the Montana State Library at: 406-444-5354 or [geoinfo@mt.gov](mailto:geoinfo@mt.gov).

**SOURCE INFORMATION:**  
Public Land data: Montana State Library  
Land Management data: Montana State Library, U.S. Forest Service, U.S. Fish and Wildlife Service, Bureau of Land Management, Montana Fish, Wildlife & Parks  
Base map data: Montana Spatial Data Infrastructure (MSDI), including Transportation, Elevation, Hydrography, Public Land Survey System, Administrative Boundaries, Geographic Names, and Cadastral datasets

