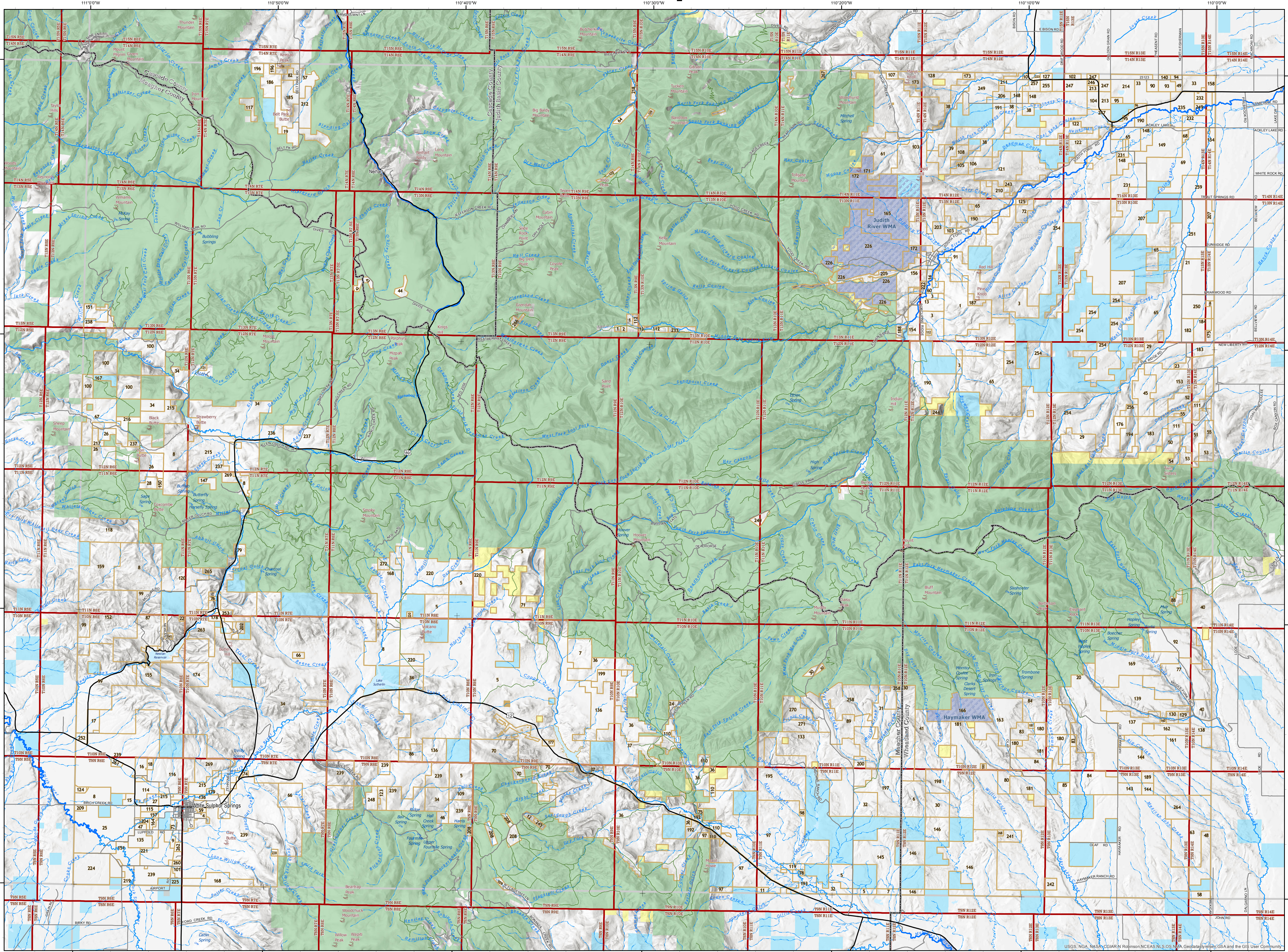


# White Sulphur Springs - 46110b Private Land Ownership Identification



- BLM
  - National Park Service
  - Other Federal Lands
  - US Fish and Wildlife Service
  - US Forest Service
  - MT Fish, Wildlife & Parks
  - State Trust Lands
  - Other State Lands
  - Local Government
- Rural Parcels
  - Wildlife Management Area
  - Indian Reservations
  - County Boundary
  - Township
  - Lakes - Reservoirs
- Interstate highway
  - Major Highway
  - Other Highway
  - City-County Road
  - Primitive Road
  - River
  - Stream/Creek
  - Intermittent Creek

**SOURCES / ACKNOWLEDGEMENTS**

This map was produced as a joint effort between Montana Fish, Wildlife & Parks (FWP) and the Geographic Information Program (GeoInfo) of the Montana State Library (MSL), in response to Montana Code Annotated 87-3-308, which directs the FWP to "...work cooperatively with all state and federal land management agencies ...to develop accurate land ownership maps...in the State."

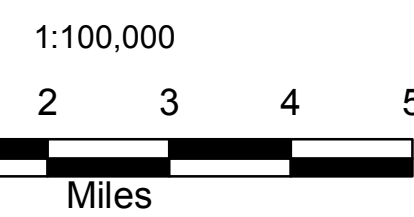
**PLEASE READ - NOTES:**

Parcel label numbers correspond to the Private Land List which may be downloaded from the Map Gallery Web site, [http://apps.msl.mt.gov/Geographic\\_Information/Maps/Land\\_Ownership/Default.aspx](http://apps.msl.mt.gov/Geographic_Information/Maps/Land_Ownership/Default.aspx)

Not all legend items may appear on this map.

Features shown on this map do not imply public access to any lands.

The land status data displayed on this map may not be complete and may contain errors in boundary locations and/or coding.



**About the DATA:**

The private land data were developed for the Montana Cadastral Database Project. These data are provided through a cooperative effort between the Montana State Library - Geographic Information, the Montana Department of Revenue (DOR), other state agencies, local governments, USGS BLM and private enterprise. Lands depicted on THIS MAP represent single ownership of contiguous parcels that are at least 40 acres in size. The MSL GeoInfo program maintains the GIS cadastral layer and the DOR maintains the private ownership information. The Montana Cadastral Database is comprised of taxable parcels (fee land) and public land (exempt property).

The public land data is from the Montana State Library public lands data collection. Much of this data was originally from a data cooperative effort between the Montana Department of Administration, (DOA) and the Montana Department of Revenue (DOR) other state agencies, local governments, USGS BLM and private enterprise. The data was grouped by very broad government categories for display on THIS MAP with general preference for types of land management that may be more friendly to hunting with appropriate permissions and regulations observed.

This map has not been verified against county or Montana Department of Revenue records.

The base scale for the public ownership data is 1:100,000, though many of the recent data incorporate data digitized from 1:24,000 scale maps or survey data. Private ownership data is accurate to scales of 1:24,000 or smaller.

Montana Spatial Data Infrastructure (MSDI) Data: Highways and Routes are Transportation Framework data, Rivers, Streams and Lakes are Montana FWP Data, enhanced by Montana National Hydrography Data, Parcel data from Department of Revenue (DOR) Cadastral data.

**DISCLAIMERS:**

The MT State Library, MT Natural Heritage Program, MT Fish, Wildlife & Parks, MT Dept. of Administration and MT Dept. of Revenue make NO representation or warranties whatsoever with respect to the accuracy or completeness of the data contained in these maps and assumes NO responsibility for the suitability of these data for a particular purpose.

These agencies will NOT be liable for any damages incurred as a result of errors displayed here.

The ownership boundaries displayed on this map are NOT based on land survey data and are NOT a substitute for property surveys. This map displays public and private land ownership information derived from several sources and continues to be corrected and updated.

46110b	46110c	46110d	46110e	46110f	46110g	46110h	46110i	46110j	46110k	46110l	46110m	46110n	46110o	46110p	46110q	46110r	46110s	46110t	46110u	46110v	46110w	46110x	46110y	46110z	
46110a	46110b	46110c	46110d	46110e	46110f	46110g	46110h	46110i	46110j	46110k	46110l	46110m	46110n	46110o	46110p	46110q	46110r	46110s	46110t	46110u	46110v	46110w	46110x	46110y	46110z
46110b	46110c	46110d	46110e	46110f	46110g	46110h	46110i	46110j	46110k	46110l	46110m	46110n	46110o	46110p	46110q	46110r	46110s	46110t	46110u	46110v	46110w	46110x	46110y	46110z	
46110c	46110d	46110e	46110f	46110g	46110h	46110i	46110j	46110k	46110l	46110m	46110n	46110o	46110p	46110q	46110r	46110s	46110t	46110u	46110v	46110w	46110x	46110y	46110z		
46110d	46110e	46110f	46110g	46110h	46110i	46110j	46110k	46110l	46110m	46110n	46110o	46110p	46110q	46110r	46110s	46110t	46110u	46110v	46110w	46110x	46110y	46110z			
46110e	46110f	46110g	46110h	46110i	46110j	46110k	46110l	46110m	46110n	46110o	46110p	46110q	46110r	46110s	46110t	46110u	46110v	46110w	46110x	46110y	46110z				
46110f	46110g	46110h	46110i	46110j	46110k	46110l	46110m	46110n	46110o	46110p	46110q	46110r	46110s	46110t	46110u	46110v	46110w	46110x	46110y	46110z					
46110g	46110h	46110i	46110j	46110k	46110l	46110m	46110n	46110o	46110p	46110q	46110r	46110s	46110t	46110u	46110v	46110w	46110x	46110y	46110z						
46110h	46110i	46110j	46110k	46110l	46110m	46110n	46110o	46110p	46110q	46110r	46110s	46110t	46110u	46110v	46110w	46110x	46110y	46110z							
46110i	46110j	46110k	46110l	46110m	46110n	46110o	46110p	46110q	46110r	46110s	46110t	46110u	46110v	46110w	46110x	46110y	46110z								
46110j	46110k	46110l	46110m	46110n	46110o	46110p	46110q	46110r	46110s	46110t	46110u	46110v	46110w	46110x	46110y	46110z									
46110k	46110l	46110m	46110n	46110o	46110p	46110q	46110r	46110s	46110t	46110u	46110v	46110w	46110x	46110y	46110z										
46110l	46110m	46110n	46110o	46110p	46110q	46110r	46110s	46110t	46110u	46110v	46110w	46110x	46110y	46110z											
46110m	46110n	46110o	46110p	46110q	46110r	46110s	46110t	46110u	46110v	46110w	46110x	46110y	46110z												
46110n	46110o	46110p	46110q	46110r	46110s	46110t	46110u	46110v	46110w	46110x	46110y	46110z													
46110o	46110p	46110q	46110r	46110s	46110t	46110u	46110v	46110w	46110x	46110y	46110z														
46110p	46110q	46110r	46110s	46110t	46110u	46110v	46110w	46110x	46110y	46110z															
46110q	46110r	46110s	46110t	46110u	46110v	46110w	46110x	46110y	46110z																
46110r	46110s	46110t	46110u	46110v	46110w	46110x	46110y	46110z																	
46110s	46110t	46110u	46110v	46110w	46110x	46110y	46110z																		
46110t	46110u	46110v	46110w	46110x	46110y	46110z																			
46110u	46110v	46110w	46110x	46110y	46110z																				
46110v	46110w	46110x	46110y	46110z																					
46110w	46110x	46110y	46110z																						
46110x	46110y	46110z																							
46110y	46110z																								
46110z																									