

## PLSS Corner Collection System Data Sheet

Meridian: PMM Tier: 3N Range: 47E Section(s): 36,31,1,6 County:  
Custer

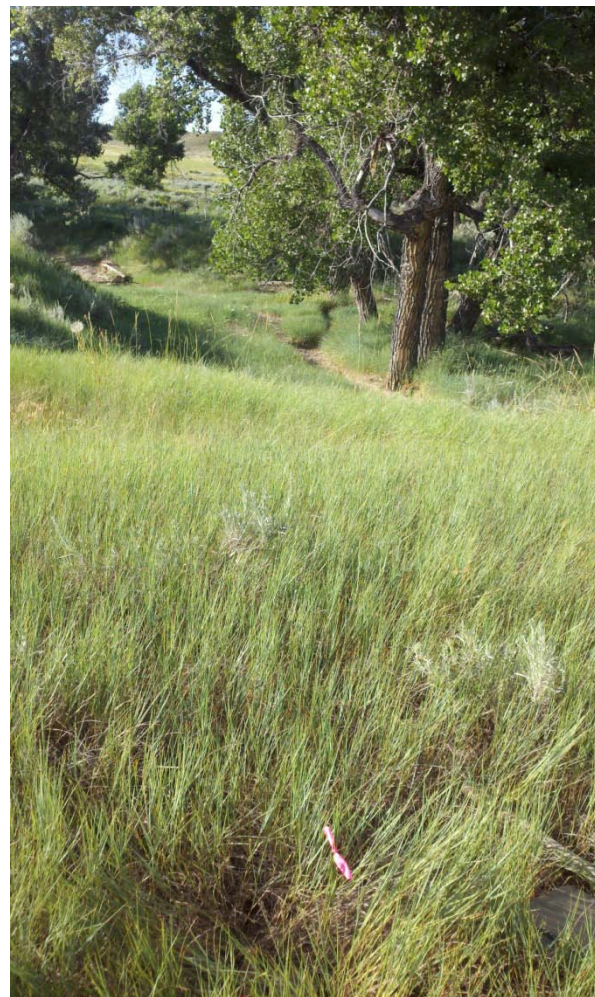
GCDB Point ID: MT200030N0470E0100700

Employee Name: Ryan Dee

Date: 7/19/2011

Time: 5:20

Found: An iron post, 3" diameter, 1" above ground, with a 3 1/2" diameter GLO brass cap, original stone buried alongside. Monument is situated 35 ft. East of a fence line bearing North and South. Monument is in line with an abandoned fence bearing East and West. Corner is located on level ground.



Latitude: 46°03'03.0934" N

Longitude: 105°56'27.4910" W

Datum: NAD83(2007)

Approximate orthometric elevation: 2599 ft.

This corner was located as part of a PLSS enhancement project. The location of this corner was not used as control for any legal surveys during this exercise. Horizontal accuracy 1 meter or less.