

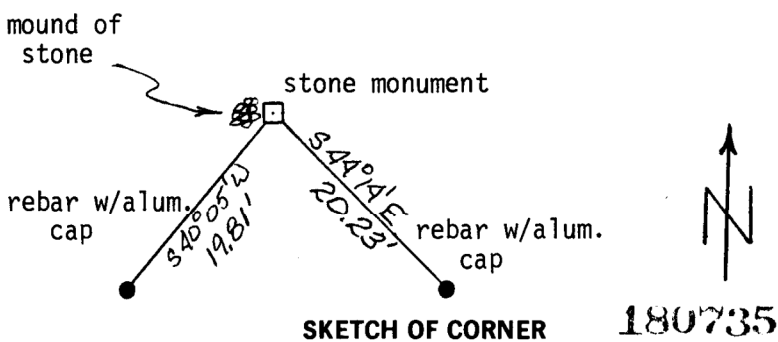
**INSTRUCTIONS**

1. Original and/or subsequent record used to evaluate the corner position.
2. Description of evidence found, note discrepancies in the record, state method of establishing lost or obliterated corners.
3. Description of monument and accessories set to perpetuate the corner position.
4. Sketch of corner, show all pertinent data which can best be shown in a sketch example, corner marking, topography ties, position of accessories, etc.
5. Certification must be signed and sealed by Land Surveyor registered in the State of Montana.
6. Fill in Cross Index & Section Diagram at bottom of sheet.

**CERTIFIED CORNER RECORDATION**

Corner SE Cor. Sec. 16 T. 9 S. R. 8 E. P.M.M. Park County

1. Surveyor Henry Rate found stone of proper size in large carin with old post, as such is described in certified land corner recordation form, Book 1, Page 31.
2. I found the same stone marked 3 groves on south face and 3 groves on east face with X cut on top. Accepted same as original stone set by U.S. Deputy Surveyor Rodney W. Page in 1883.
3. Paint original stone orange and build mound of stone on west edge 2' base, 1.5' high.  
 Set 5/8"x24" rebar with aluminum cap marked RM 1, bears S44°-14'E, 20.23'  
 Set 5/8"x24" rebar with aluminum cap marked RM 2, bears S40°-05'W, 19.81'



CERTIFICATION

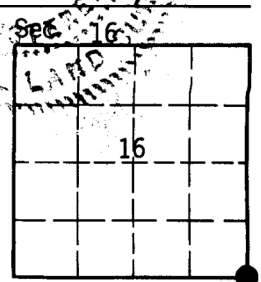
I, Steven J. Barber  
 certify the information shown herein is true and correct.  
*Steven J. Barber*  
 Signature of Ground Party Chief

I, Michael D. Weldon  
 certify that this Corner Record correctly represents work performed by me or under my direction in compliance with the "Corner Recordation Act" (70-2-104 et seq., M.C.A.)  
*Michael D. Weldon*  
 Signature of Surveyor & Seal

Date: 2/84 Reg. No. 7698 S  
 Employer: U.S. Forest Service

Office of Clerk and Recorder, County of Park. This "corner record" was filed for record on June 11, 1984 12:15 PM was noted on the cross-index plat and is assigned page No. 73, in book No. one

*James Jensen*  
 County Official



*No Fee*

Cross Index No. N-13 T. 9 S. R. 8 E. P.M.M.  
 Adopted July 1, 1981, Montana Board of Professional Engineers & Land Surveyors

• - corner this sheet