

PT#17

### CERTIFIED LAND CORNER RECORDATION

#### DESCRIPTION OF CORNER EVIDENCE FOUND, AND ORIGINAL RECORD (IF KNOWN)

Set a granite stone 20"x14"x8", 15" deep, marked 1-3995B for Corner No. 1. This is the Point of Intersection of the south side of the Town of Cooke, and the west side of Sur. No. 54 B, a pine post 6" square, 4' long marked PI 54 B. I set the stone along side the post. A blazed pine tree 9" diam. marked B T 1-3995 B bears N40°E 5½'. The N.E. Corner of a log house marked X B.O. 1-3995 B bears S72°W. 3½'.

Found no trace of the original stone. Found original B T stump, the identity of which was verified by Mr. Vincent Mus, owner of "Mus Rest Motel" who remembers the pine tree with blaze and markings. The tree was cut at ground level by REA when the 1st power line was put in. The out line of old log cabin site, to which NE corner & 3.5' tie was made, can clearly be seen.

(see above)

#### DESCRIPTION OF MONUMENT AND ACCESSORIES ESTABLISHED TO PERPETUATE THE ORIGINAL LOCATION OF THIS CORNER:

Date of work: SEP 13 1979

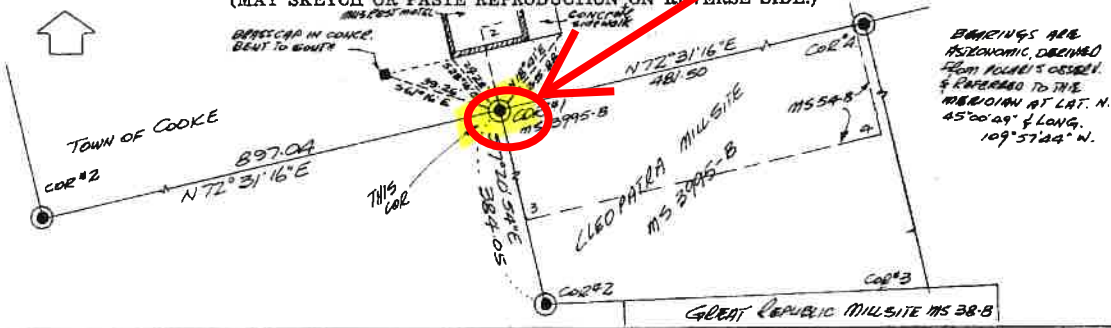
As calculated distance agrees with the distances and bearings to accessories, I accept the exact calculated location. Set a 2½"x 30" aluminum pipe 26" in the ground with the cap marked. Raised a collar of stone around the monument and set a 6' steel fence post 1' to the south. Bearing objects as shown:



**THIS CORNER 17**

FB V 15-4A-31

#### SKETCH, WITH COURSE AND DISTANCE TO ADJACENT CORNERS IF DETERMINED IN THIS SURVEY. (MAY SKETCH OR PASTE REPRODUCTION ON REVERSE SIDE.)



BEARINGS ARE  
ASTRONOMIC, OBTAINED  
FROM ALLEN'S OBSERV.  
& REFERRED TO THE  
MERIDIAN AT LAT. N.  
45°00'49" & LONG.  
109°57'22" W.

Surveyor's Seal

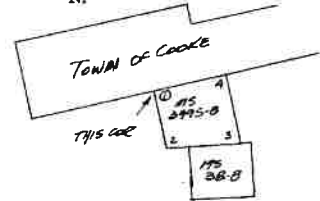
I, T.J. EMBREY  
certify that the information shown herein is true and correct.

Signature of Ground Party Chief

I, James B. Spring  
certify that I have carefully performed or reviewed the work done on the diagrammed corner as reported on this recordation form and approve the same.

James B. Spring  
Signature of Surveyor

DIAGRAM OF CORNER:  
SEC 25, T9S, R14E  
N.



= Corner recorded on the sheet  
PARK COUNTY 177.

1535-S  
Registration Number

**163948**

Office of Clerk and Recorder, County of Park

This "corner record" was filed for record on the 30<sup>th</sup> day of January, 1981, at 12:05 PM was noted on the cross-index plat and is assigned page No. 13, in book No. ONE.  
Margaret Monnell  
County Official

Form 125 - 45227 Fee 50¢  
See special cross index  
Cross Index No. 206-6-7 T. 9S R. 14E Mer.