

PTS #  
18 + 20

### CERTIFIED LAND CORNER RECORDATION

#### DESCRIPTION OF CORNER EVIDENCE FOUND, AND ORIGINAL RECORD (IF KNOWN)

ORIGINAL - Set a post 4 feet long, 8 ins. square, 2 feet in the ground with a mound of earth around it, marked C.C. 2. for Cor. No. 2.

FOUND (1979) - Found 5/8" rebar with aluminum cap marked (Mr. Watters R.L.S. states that he found remains of the original corner post).



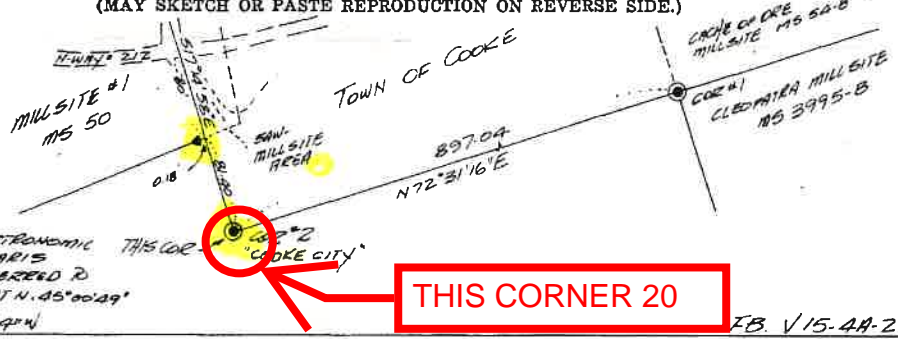
#### DESCRIPTION OF MONUMENT AND ACCESSORIES ESTABLISHED TO PERPETUATE THE ORIGINAL LOCATION OF THIS CORNER:

When replacing the 5/8" rebar with a 2 1/2"x30" aluminum pipe, we encountered remains of an old rotten post. The cap is 4" above ground and marked. Made bearing trees: 12" spruce S77°W 28.13' MK 2 Cooke B T; 12" spruce S07°W 80.66' MK 2 Cooke B T; 10" pine S57°E 46.71' MK 2 Cooke B T. Raised a collar of stone around the corner monument. A 6' steel fence post is set 1' SW of the Corner Monument.

Date of work: SEPT 11 1979



#### SKETCH, WITH COURSE AND DISTANCE TO ADJACENT CORNERS IF DETERMINED IN THIS SURVEY. (MAY SKETCH OR PASTE REPRODUCTION ON REVERSE SIDE.)



BEARINGS ARE ASTRONOMICAL DERIVED FROM POLARIS OBSERVATION & REFERRED TO THE MERIDIAN AT LAT N. 45°00'29\"/>

**THIS CORNER 20**

FB V15-4A-26

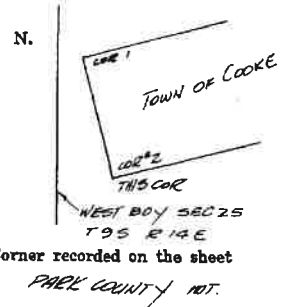
Surveyor's Seal

I, T. J. EMBRELLS  
certify that the information shown herein is true and correct.  
T. J. Embrells  
Signature of Ground Party Chief

I, James B. Spring  
certify that I have carefully performed or reviewed the work done on the diagrammed corner as reported on this recordation form and approve the same.  
James B. Spring  
Signature of Surveyor

1535-S  
Registration Number

#### DIAGRAM OF CORNER:



= Corner recorded on the sheet  
PAGE COUNTY MT.

163947

Office of Clerk and Recorder, County of Park

This "corner record" was filed for record on the 30<sup>th</sup> day of January, 1981, was noted on the cross-index plat and is assigned page No. 11, in book No. one at 12:05 PM James B. Spring County Official

Form 125 - 45227

Fee 50<sup>¢</sup>  
See special cross index

Cross Index No. P-7-3 T. 95 R. 14E Mer.