

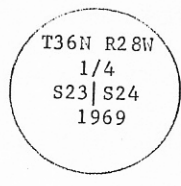
INSTRUCTIONS

1. Original and/or subsequent record used to evaluate the corner position.
2. Description of evidence found, note discrepancies in the record, state method of establishing lost or obliterated corners.
3. Description of monument and accessories set to perpetuate the corner position.
4. Sketch of corner, show all pertinent data which can best be shown in a sketch example, corner marking, topography ties, position of accessories, etc.
5. Certification must be signed and sealed by Land Surveyor registered in the State of Montana.
6. Fill in Cross Index & Section Diagram at bottom of sheet.

CERTIFIED CORNER RECORDATION

Corner 1/4 Cor. of Secs. 23 & 24 T. 36N R. 28W P.M.M. Lincoln County

I. 1903 GLO Record: Set a lava stone, 16 x 9 x 7 ins., 11 ins. in the ground, for 1/4 sec. cor., mkd. stone and mkd. 2 bearing trees.
1969 BLM Remonumentation Record: The 1/4 sec. cor. of secs. 23 and 24, monumented with a broken lava stone, firmly set, visibly mkd. 4 and witnessed by the remains of the original bearing trees.
 An old root crown, bears S.75 1/2°E., 10 lks. dist.
 A stump, bears N.25 1/4°W., 39 lks. dist., with no visible marks.
 At the corner point:
 Set an iron post, 30 ins. long, 2 1/2 ins. diam., 24 ins. in the ground, with a brass cap mkd.:



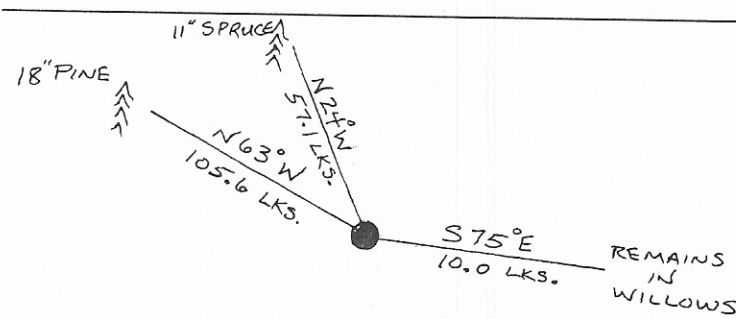
from which the following new references:
 A pine, 15 ins. diam., bears N.62 3/4°W., 105 lks. dist., mkd. X BT.
 A spruce, 8 ins. diam., bears N.21°W., 57 lks. dist., mkd. 1/4 S23 BT.

Bury the original stone alongside, and raise a collar of stone, 2 ft. diam., around the iron post.

1981 Marquardt Recordation: Found BLM brass cap, no perpetuation work was done.

II. Found a BLM monument, protruding 14 ins. above ground, with a brass cap marked as described in the BLM record, from which the following references:
 Remains in a clump of willows, bears S.75°E., 10 lks. dist., no visible marks.
 A pine, 18 ins. diam., bears N.63°W., 105.6 lks. dist., scribing visible.
 A spruce, 11 ins. diam., bears N.24°W., 57.1 lks. dist., visible scribing.

III. Painted a red band around each bearing tree and attached "Land Survey Monument" and "Bearing Tree" signs.
 Set a guard post, with a "Survey Marker" decal attached, 2.3 ft. Northwest from corner.



SKETCH OF CORNER

CERTIFICATION

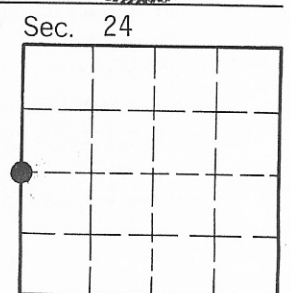
I, Gary Crismon
 certify the information shown herein is true and correct.
 Signature of Ground Party Chief

I, Thomas C. Hill
 certify that this Corner Record correctly represents work performed by me or under my direction in compliance with the "Corner Recordation Act" (70-22-101, et seq., M.C.A.)
 Signature of Surveyor & Seal

Date: 9/85 Reg. No. 551
 Employer: U.S.F.S.

Office of Clerk and Recorder, County of Lincoln. This "corner record" was filed for record on Oct 2, 1985 was noted on the cross-index plat and is assigned page No. 3102, in book No. _____

Janet E. Siegel by Bill Siegel
 County Official



Cross Index No. P-21 T. 36N R. 28W P.M.M.

• - corner this sheet