

CERTIFIED CORNER RECORDATION

Corner

S21	S22
S28	S27

 T. 36 N. R. 28 W. P.M.M. LINCOLN County

I. Record: 1903 Subdivision and Meander lines of T36N, R28W, by Peter M. Cardell and Abraham L. Rinearson and Gordon G. Smith: Set a lava stone, 15x10x4 ins., 10 ins. ground, for cor. of secs. 21, 22, 27 and 28, marked with 3 notches on E. and 3 notches on S. edge; from which:

- A fir, 4 ins. diam, bears N25°E, 68 lks. dist., marked T36N R28W S 22 BT.
- A pine, 24 ins. diam, bears S81 1/2°E, 76 lks. dist., marked T36N R28W S 27 BT.
- A fir, 5 ins. diam, bears S37 1/4°W, 22 lks. dist., marked T36N R28W S 28 BT.
- A fir, 7 ins. diam, bears N43°45'W, 66 lks. dist., marked T36N R28W S 21 BT.

1966 Army Corp of Engineers Corner Card by K. W. Haskell: Stone firmly set. 3 BT's. Set IP-brass cap marked

BT-S27-10"fir-S32°30'E-55 lks.-mkd.-FS/RM BT
 BT-S28-10"fir-S54°20'W-52 lks.-mkd.-FS/RM BT



1972 Army Corp of Engineers Libby Dam-Lake Kooconusa Project, District File No. E 53_1-154, Sheet 30 of 37: Iron pipe with bronze cap & 2 B.T.'s

II. Found a 2 in. diam. iron pipe, loosley set, with 2 1/2 in. diam. brass cap marked as shown above, from which:

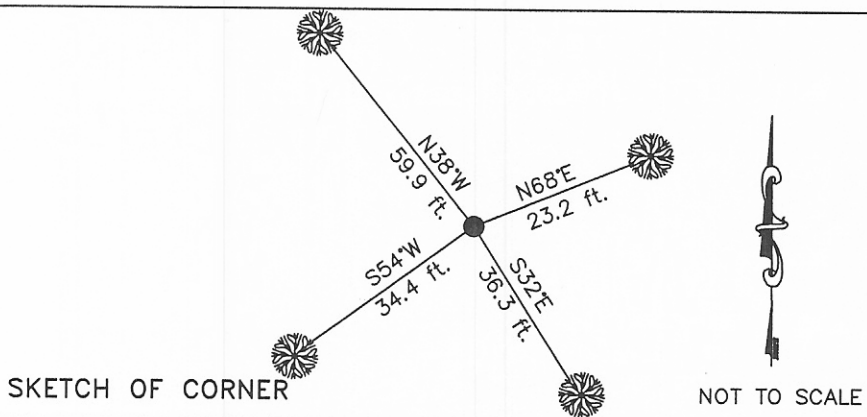
- A fir, 14 ins. diam., bears S32°E, 36.3 ft. dist.
- A pine, 12 ins. diam., bears S54°W, 34.4 ft. dist.
- No evidence of original GLO BT due to logging in the area and fire. COE BT faces are burnt.

III. Firmed up the monument with rocks and established 2 new bearing trees:

- A fir, 15 ins. diam, bears N68°E, 23.2 ft. dist., scribed T36N R28W S 22 BT.
- A pine, 13 ins. diam, bears N38°W, 59.9 ft. dist., scribed T36N R28W S 21 BT.

Painted red the scribed face and a red band around the bearing trees. Attached Land Survey Monument signs. Place a 6 ft. galvanized steel guard post, NORTH, 3 ft. dist., with Land Survey Monument decal attached.

Date of Fieldwork: 6/27/2006
 Survey crew: Steve Boyer, Tom Hommel
 Magnetic declination: 20° East assumed
 Equipment used: Hand compass and loggers tape
 U.S. Forest Service, Supervisors Office, 1101 Hwy. 2 West, Libby, MT 59923 (406) 293-6211



CERTIFICATION

I, Thomas M. Hommel 10800LS
 certify the information shown herein is true and correct.

Thomas M. Hommel
 Signature Ground Party Chief

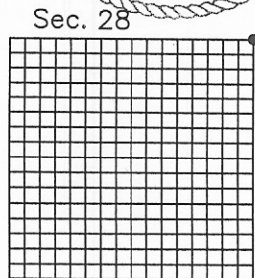
I, Steven A. Boyer
 certify that this Corner Record correctly represents work performed by me or under my direction in compliance with the "Corner Recordation Act" (70-42-101, et seq., M.C.A.)

Steven A. Boyer
 Signature of Surveyor & Seal

Date: 11/06/2006 Reg. No. 975005750LS
 Employer: U. S. Forest Service

Office of Clerk and Recorder, County of Lincoln. This "corner

199633 BOOK: CCR CC&R'S PAGE: 10967 Pages: 1
 STATE OF MONTANA LINCOLN COUNTY
 RECORDED: 12/13/2006 12:47 KOI: CC&R'S
 CORAL M. CUMMINGS CLERK AND RECORDER
 FEE: \$0.00 BY: *Jeannie Deunio*
 TO: US FOREST SERVICE



Cross Index No. R-13 T. 36N. R. 28W. P.M., MT

Adopted July 1, 1981, Montana Board of Professional Engineers & Land Surveyors

• corner this sheet