

CERTIFIED LAND CORNER RECORDATION

Original Record 1903
 80.00 Set a washed boulder 14x12x7 ins. 9 ins. in the ground for cor. of secs. 4,5,32 and 33, marked with 4 notches on E. and 2 notches on W. edge; from which A pine, 6 ins. diam., bears N. 16° E., 51 lks. dist., (down-at 40') marked T 36 N R 28 W., S 33 B T A pine, 5 ins. diam., bears S. 79½° E., 47 lks. dist., marked T 35 N R 28 W S 4 B T (gone) a fir, 8 ins. diam., bears S. (stump) 63¼° W., 81 lks. dist., marked T 35 N R 28 W S 5 B T A pine, 30 ins. diam., bears N. 39° W., 27 lks. dist., marked T 36 N R 28 W S 32 B T (stump)

1931 This corner will hereafter refer to secs. 32 and 33 and cor. No. 2 of H.E.S. No. 278, therefore, I erase the markings on the SE. and SW. bearing trees referring to secs. 4 and 5 only, and marked a new one as follows: A fir, 12 ins. diam., bears N. 80¼° W., 25 lks. dist., marked T 36 N R 28 W S 32 B T.

DESCRIPTION OF MONUMENT AND ACCESSORIES ESTABLISHED TO PERPETUATE THE ORIGINAL LOCATION OF THIS CORNER:

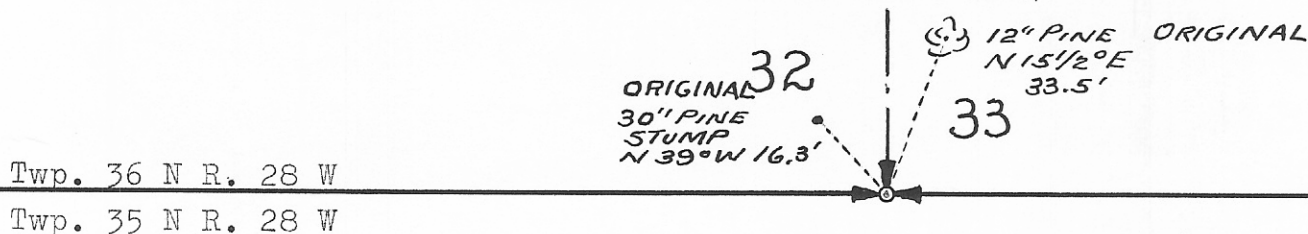
For evidence found see reverse side

Date of work: 11/6/66

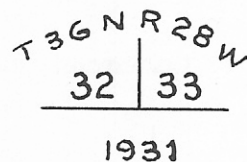
We set a 2" pipe 30" long 18" in ground with brass cap marked T 36 N R 28 W 32 33 (orig. stone alongside)

From which a 30" pine stump-sound and legible bears N 39° W 16.3' marked T 36 N R 28 W S 32 B T (Original)
 A 12" pine bears N 15½° E 33½' (original) Tagged this with Std. BIM B T Sign

SKETCH, WITH COURSE AND DISTANCE TO ADJACENT CORNERS IF DETERMINED IN THIS SURVEY. (MAY SKETCH OR PASTE REPRODUCTION ON REVERSE SIDE.)



Brass Cap Marked Thus →



Surveyor's Seal

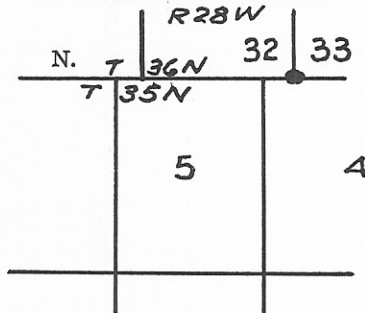
I, _____ certify that the information shown herein is true and correct.

Signature of Ground Party Chief

I, J. W. Ninneman certify that I have carefully performed or reviewed the work done on the diagrammed corner as reported on this recordation form and approve the same.

J. W. Ninneman
 Signature of Surveyor

DIAGRAM OF CORNER:



● = Corner recorded on the sheet

#534 ES
 Registration Number

Office of Clerk and Recorder, County of Lincoln

This "corner record" was filed for record on the 2nd. day of August 1966, was noted on the cross-index plat and is

assigned page No. 54, in book No. 1

ELEANOR L. VAUGHN, By: *Eleanor L. Vaughn*
 County Official Deputy.