

INSTRUCTIONS

1. Original and/or subsequent record used to evaluate the corner position.
2. Description of evidence found, note discrepancies in the record, state method of establishing lost or obliterated corners.
3. Description of monument and accessories set to perpetuate the corner position.
4. Sketch of corner, show all pertinent data which can best be shown in a sketch example, corner marking, topography ties, position of accessories, etc.
5. Certification must be signed and sealed by Land Surveyor registered in the State of Montana.
6. Fill in Cross Index & Section Diagram at bottom of sheet.

CERTIFIED CORNER RECORDATION

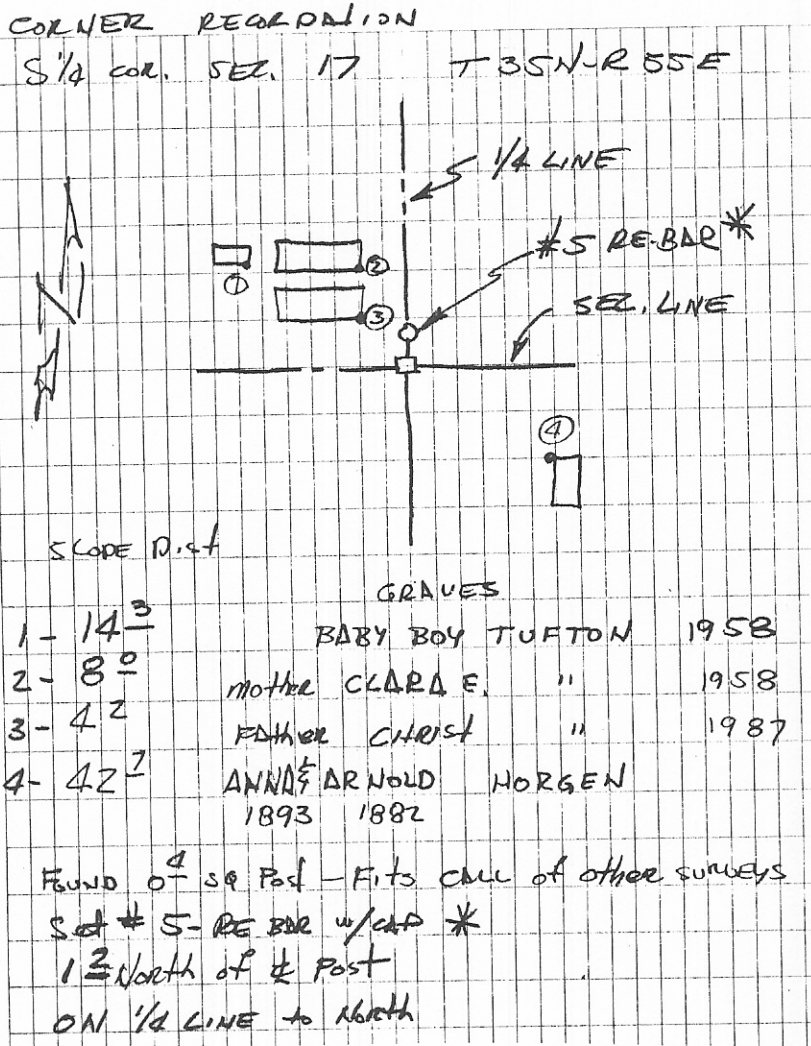
Corner South 1/4 corner Section 17 T. 35N R. 55E P.M.M. Sheridan County

1. HAD GLO MAP. FITS OTHER SURVEYS OF THE AREA.

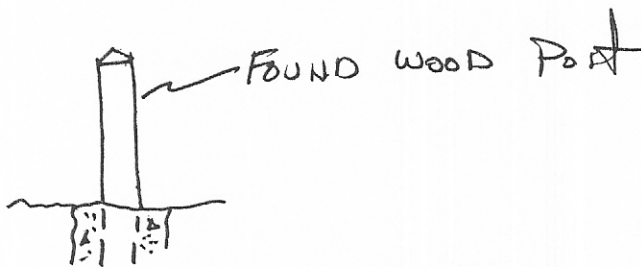
2. Found a 0.4 ft. square post in cemetery - fits calls of other surveys

3. set a #5 re-bar with survey cap on, 1.2 ft. North of centerline post on 1/4 line North
SEE SKETCH

4. Sketch



SEE BACK FOR MORE INFO.



SKETCH OF CORNER

CERTIFICATION

I, _____ certify the information shown herein is true and correct.

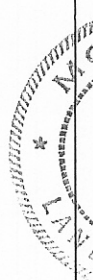
Signature Ground Party Chief
Leo Horgan

certify that this Corner Record correctly represents work performed by me or under any direction in compliance with the "Corner Recordation Act" (70-2-301, et seq., M.C.A.)

Signature of Surveyor & Seal
934 [Signature]

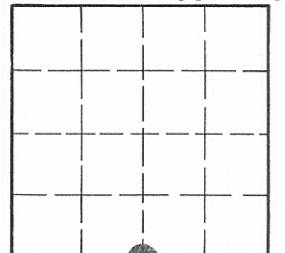
Date: 11-12-88 Reg. No. 9345S

Employer: Powers Elevation Co. Inc.



Office of Clerk and Recorder, County of Sheridan. This "corner record" was filed for record on Nov 14, 1988 at 8:30 AM was noted on the cross-index plat and is assigned page No. _____, in book No. #132 Milton E. Towland County Official

Sec. 17 T-35N R-55E



• - corner this sheet

428263

Cross Index No. N-7 T. 35N R. 55E P.M.M.

INSTRUCTIONS TO SURVEYORS FOR COMPLETION OF CERTIFIED CORNER RECORDATION FORMS

I. ORIGINAL AND/OR SUBSEQUENT RECORD:

This item should include the original record, corner records, maps and other documents to have validity by reference to the record date and location. In some cases, the record may be based on the corner position.

II. DESCRIPTION:

This item includes a description of the record, then the location of the monument. If no physical monument is present, the location should be established by other means.

III. DESCRIPTION:

This item includes the type of monument and the type of instrument used for the survey.

Refer to the certificate of accuracy for the type of monument used.

IV. SURVEY:

The survey should be described in terms of the type of survey and the method used.

V. NOTES:

Other notes relevant to the survey should be included here.

When locating the corner position, the surveyor should refer to the sources: Previously filed corner records, maps, or other documents in public record, but known to be correct.

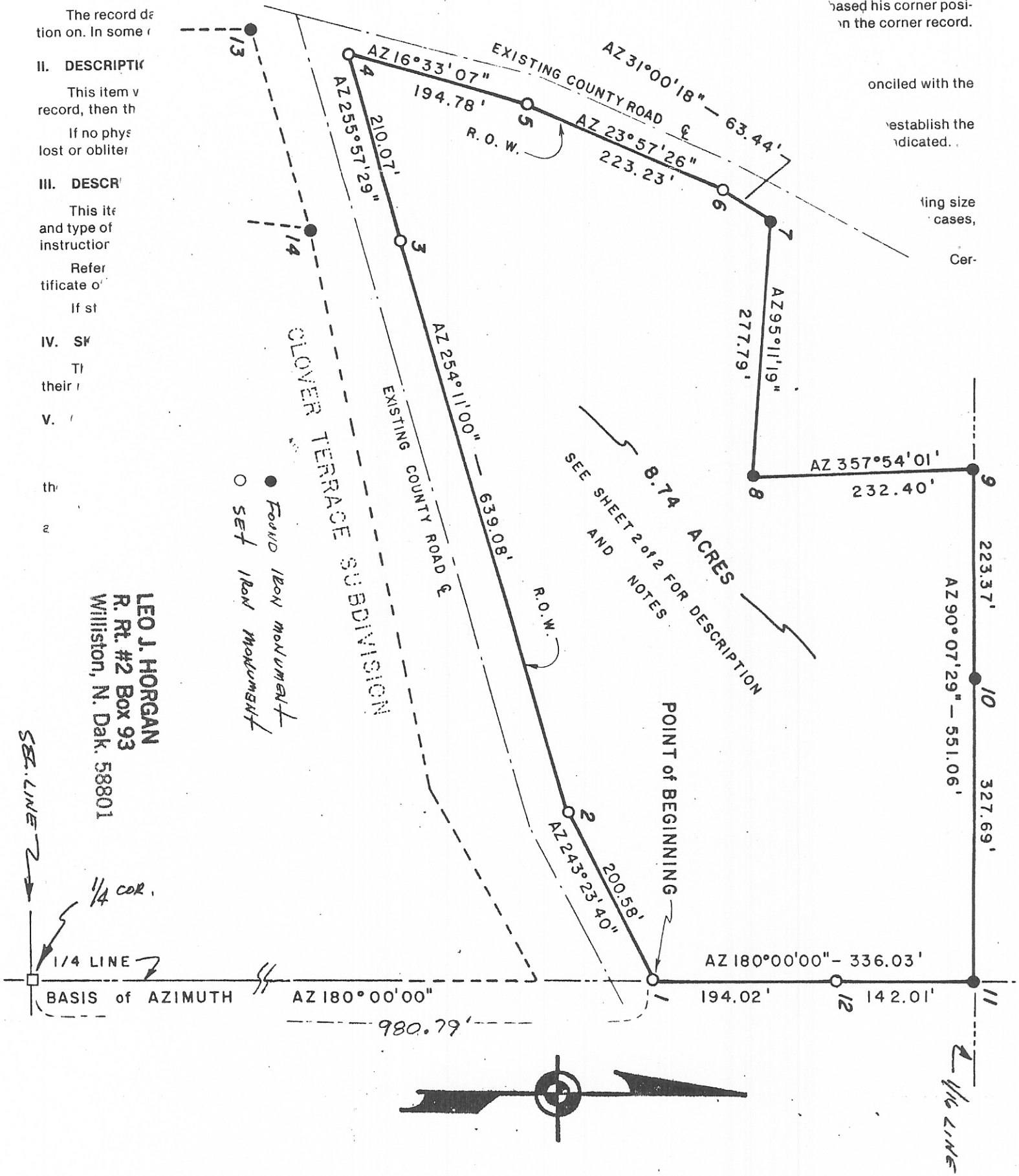
The surveyor should base his corner position on the corner record.

The surveyor should be satisfied with the accuracy of the survey.

The surveyor should establish the corner position as indicated.

The surveyor should use the proper measuring size cases, and the proper measuring tape.

The surveyor should certify the accuracy of the survey.



LEO J. HORGAN
 R. Rt. #2 Box 93
 Williston, N. Dak. 58801

● Found Iron Monument
 ○ Set Iron Monument

Sub. Line
 1/4 COR.
 1/4 LINE
 BASIS of AZIMUTH

SEE SHEET 2 of 2 FOR DESCRIPTION AND NOTES

POINT OF BEGINNING

8.74 ACRES



1/4 LINE