

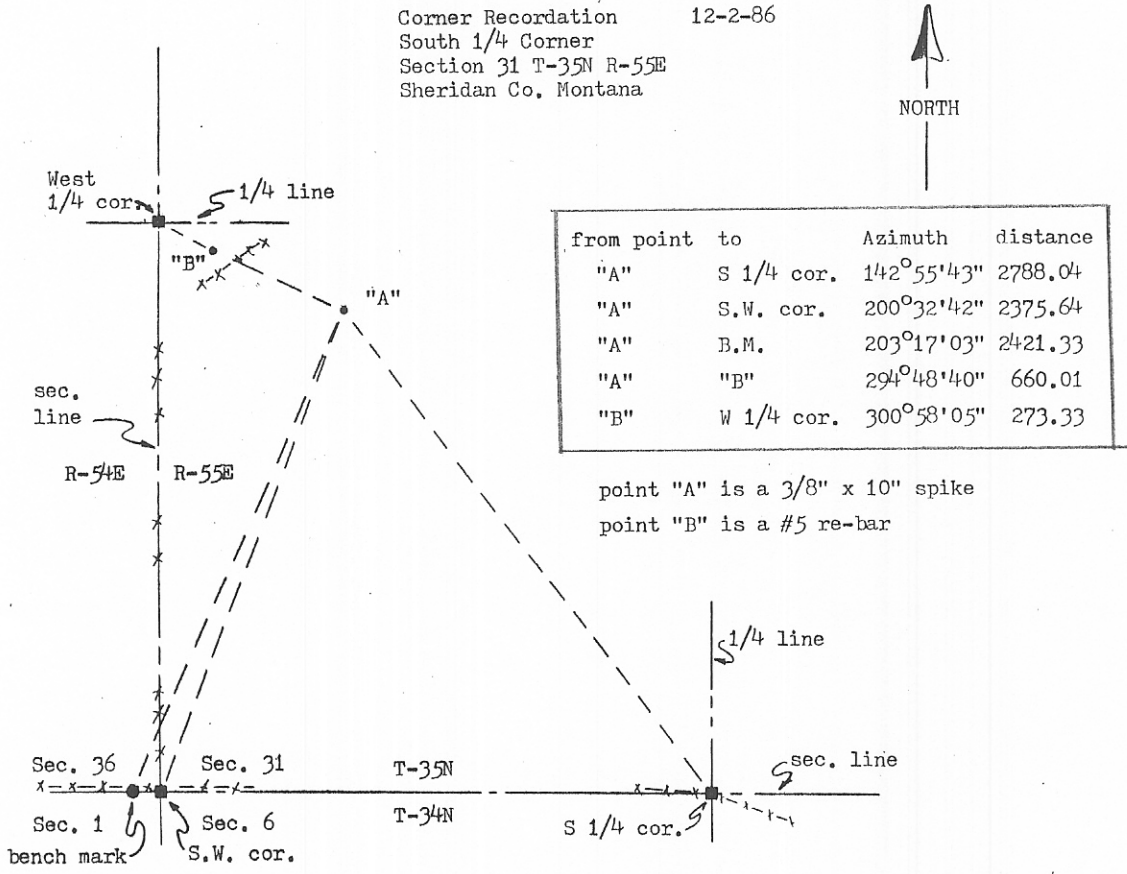
INSTRUCTIONS

1. Original and/or subsequent record used to evaluate the corner position.
2. Description of evidence found, note discrepancies in the record, state method of establishing lost or obliterated corners.
3. Description of monument and accessories set to perpetuate the corner position.
4. Sketch of corner, show all pertinent data which can best be shown in a sketch example, corner marking, topography ties, position of accessories, etc.
5. Certification must be signed and sealed by Land Surveyor registered in the State of Montana.
6. Fill in Cross Index & Section Diagram at bottom of sheet.

CERTIFIED CORNER RECORDATION

Corner South 1/4 corner Sec. 31 T. 35N R. 55E P.M.M. Sheridan County

1. GLO- Set a granite stone, 20 x 16 x 10 ins. 15 ins. in the ground, for 1/4 sec. cor., marked 1/4 on N. face; dig pits, 18 x 18 x 12 ins. E. and W. of stone, 3 ft. dist., and raise a mound of earth, 3 1/2 ft. base, 1 1/2 ft. high, N. of cor.
2. Found- marked stone (marked 1/4 on the South face of the stone) with evidence of pits
3. Set- set a #5 re-bar with cap on North side of stone.
4. Sketch-



425324 SKETCH OF CORNER

CERTIFICATION
I, Leo J. Horgan
certify the information shown herein is true and correct.
Leo J. Horgan 8-6-87
Signature Ground Party Chief
I, Tom Nelson
certify that this Corner Record correctly represents work performed by me or under my direction in compliance with the "Corner Recordation Act" (70-22-101, et seq., M.C.A.)
T. Nelson
Signature of Surveyor & Seal
Date: 8-10-87 Reg. No. 21348
Employer: Powers Elevation Inc.

Office of Clerk and Recorder, County of Sheridan. This "corner record" was filed for record on August 21, 1987 at 12:30 PM was noted on the cross-index plat and is assigned page No. _____, in book No. 101

Milton S. Skuland
County Official
by Service Van Curen - Deputy
Cross Index No. 2-3 T. _____ R. _____ P.M.M.

