

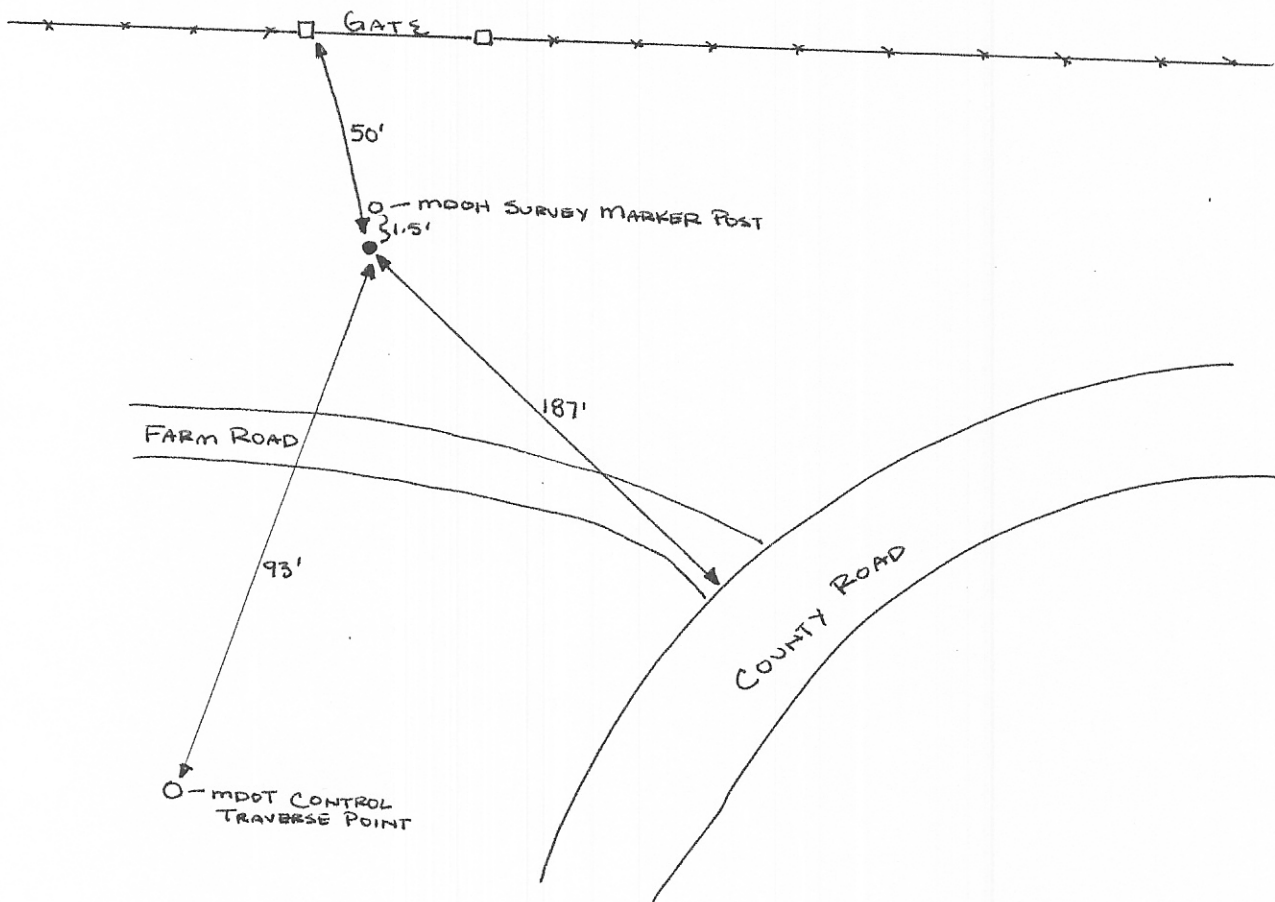
INSTRUCTIONS

1. Original and/or subsequent record used to evaluate the corner position.
2. Description of evidence found, note discrepancies in the record, state method of establishing lost or obliterated corners.
3. Description of monument and accessories set to perpetuate the corner position.
4. Sketch or corner, show all pertinent data which can best be shown in a sketch example, corner marking, topography ties, position of accessories, etc.
5. Certification must be signed and sealed by Registered Land Surveyor in State of Montana.
6. Fill in Cross Index & Section Diagram at bottom of sheet.

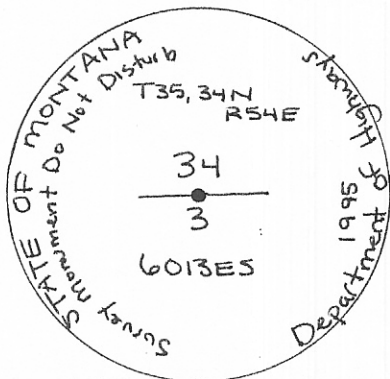
CERTIFIED CORNER RECORDATION

Corner NORTH 1/4 CORNER SECTION 3 T. 34N R. 54E P.M.M. SHERIDAN County

- ① Used GLO Notes and quad map to search for corner
- ② Not found — could not find any evidence of monument
- ③ Set MDOH Aluminum pipe and 3" Aluminum cap — based off coordination of section breakdown



3" ALUMINUM CAP



SKETCH OF CORNER

CERTIFICATION

I, DAN KENCZKA certify the information shown herein is true and correct.
Dan Kenczka
 Signature, Ground Party Chief

I, JACK R. TOSHER certify that this Corner Record correctly represents work performed by me or under my direction in compliance with the Corner Recordation Act" (70-22-101 et seq., M.D.A.)
Jack R. Tosher
 Signature of Registered Land Surveyor & Seal

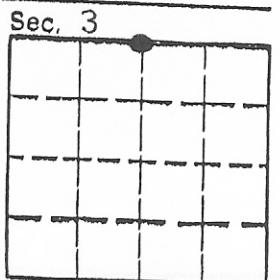
Date: 5/17/95 Reg. No. 2012ES
 Employer: THOMAS, DEAN & HOSKINS

Office of Clerk and Recorder, County of Sheridan, This "corner record" was filed for record on the July 5, 1995 at 1:00 pm day of 19, was noted on the cross-index plat and is assigned page No. _____, in

book No. 240
442221

Walter E. Gauland
 County Official
Devin Deputy

Cross Index No. A-15 T. 34N R. 54E P.M.M.



• - corner this sheet